

Gasparilla Island State Park Amory Memorial Chapel

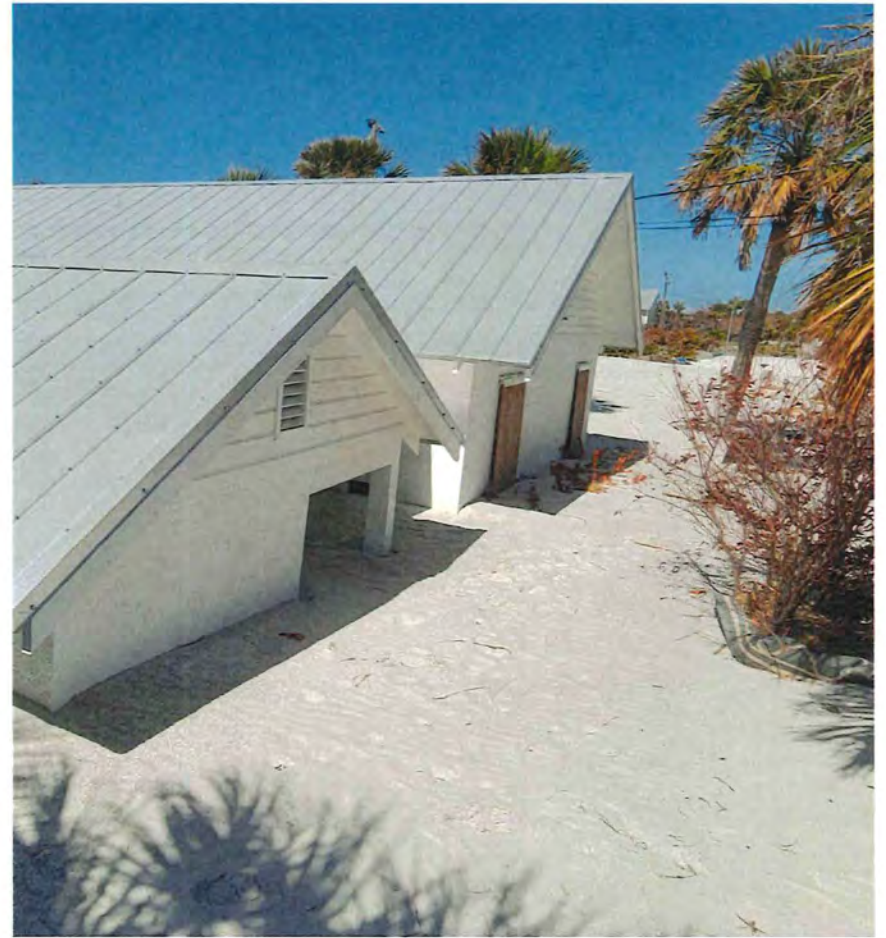
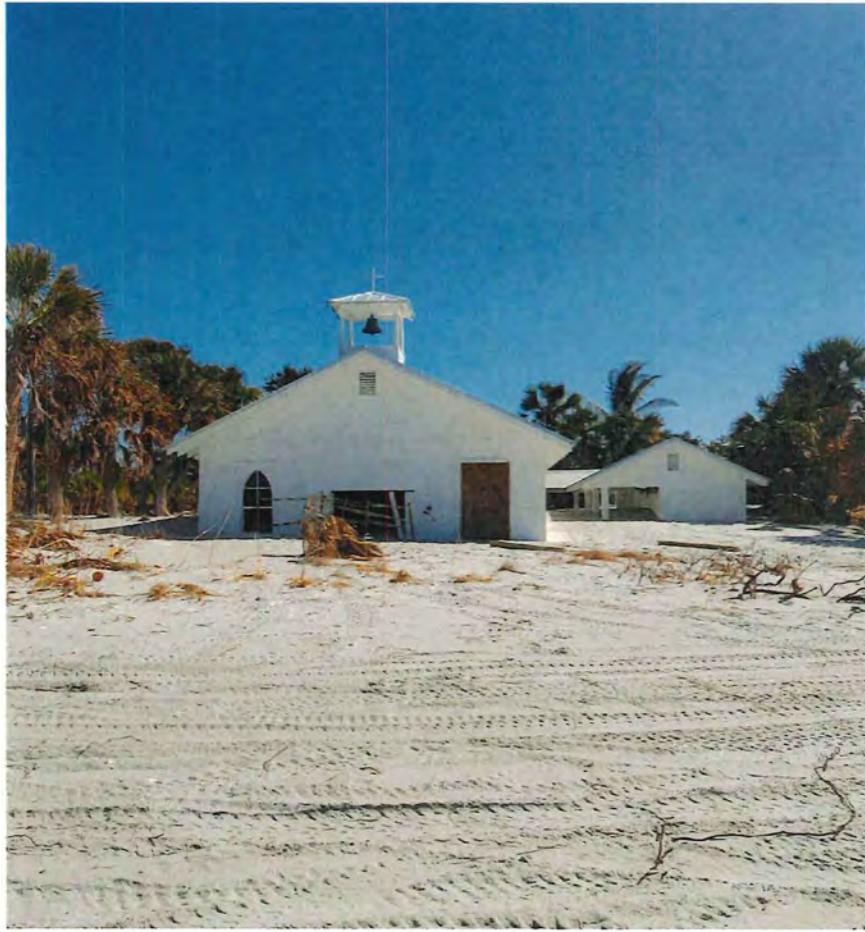




Historic Conditions



Aug 2024 Conditions



October 2024 Conditions – Post Hurricane Milton



October 2024 Conditions – Post Hurricane Milton



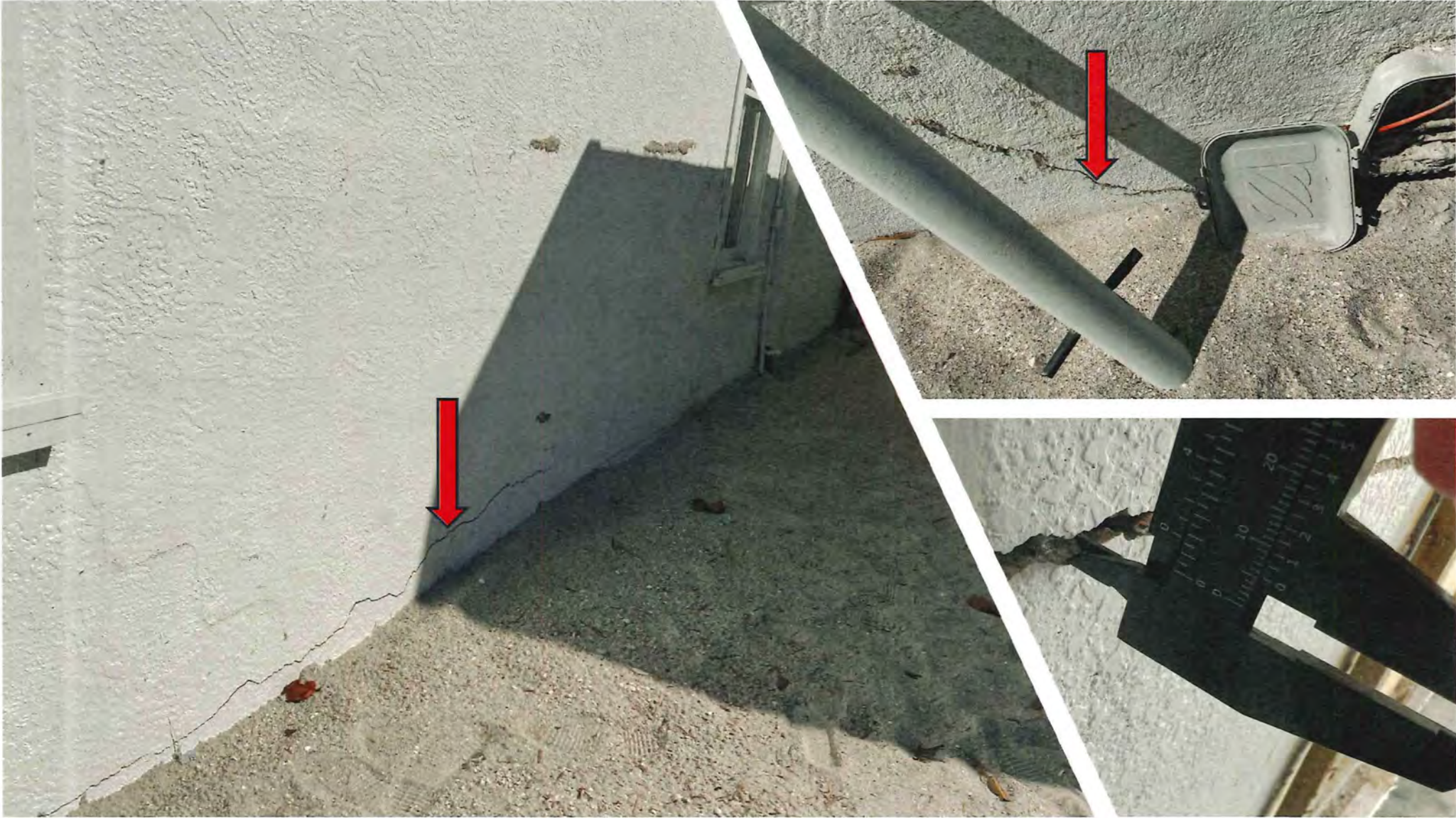
December 2024 Conditions – Post Sand Removal



December 2024 Conditions – Post Sand Removal



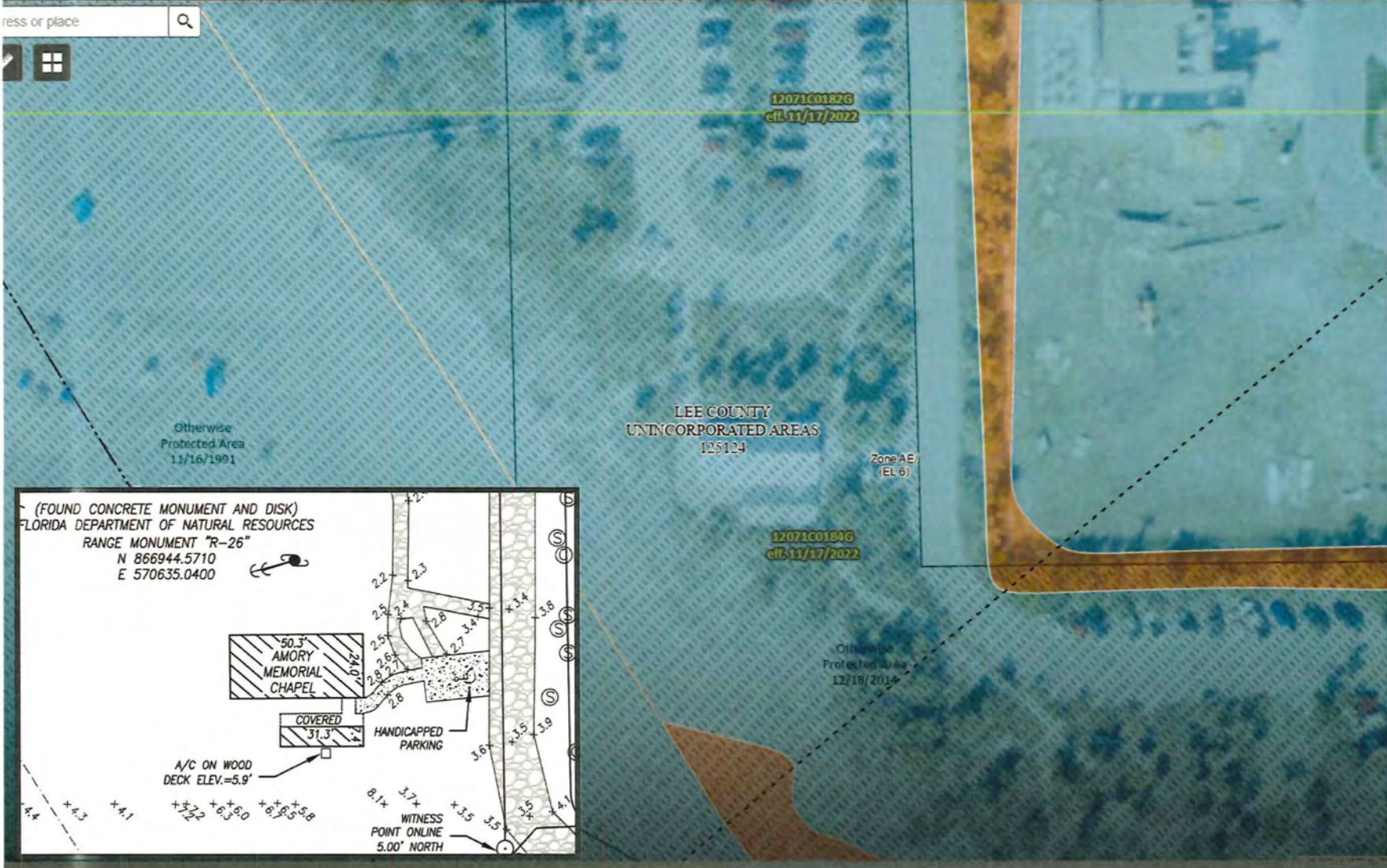
December 2024 Conditions – Post Sand Removal



National Flood Hazard Layer (NFHL) Viewer

with Web AppBuilder for ArcGIS

Address or place



Legend

- Bridge
- Dam, Weir, Jetty
- Other Structures

River Mile Markers



Limit of Moderate Wave Action



Flood Hazard Boundaries

Line Type

- Limit Lines
- SFHA / Flood Zone Boundary
- Flowage Easement Boundary

Flood Hazard Zones

Zone Type

- 1% Annual Chance Flood Hazard
- Regulatory Floodway
- Special Floodway
- Area of Undetermined Flood Hazard
- 0.2% Annual Chance Flood Hazard
- Future Conditions 1% Annual Chance Flood Hazard
- Area with Reduced Risk Due to Levee
- Area with Risk Due to Levee

Primary Frontal Dunes

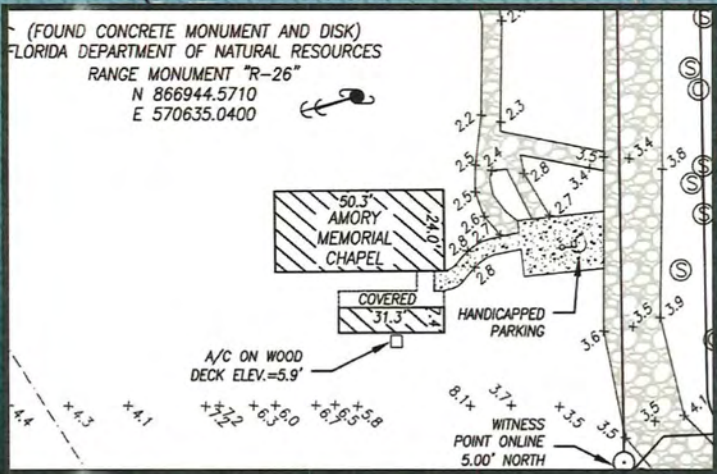


Coastal Barrier Resources System (CBRS) (FWS)

CBRS Prohibitions

Unit Type

- Otherwise Protected Area
- System Unit





Option 1: Restore Chapel



Challenges:

- **FEMA Flood Elevation (AE 6)**
- **FEMA 50% Rule**
- **Life Safety & Repetitive Loss**



Option 2: Open-Air Chapel



Challenges:

- **Historic Significance**

Solutions:

- **Selective Reuse**
- **Interpretive Program of Historic Significance**
- **Archaeologist Coordination**
- **Design Guidelines**
 - **Footprint**
 - **Steeple**
 - **Roof Pitch**