

Milwaukee Blvd Sidewalk



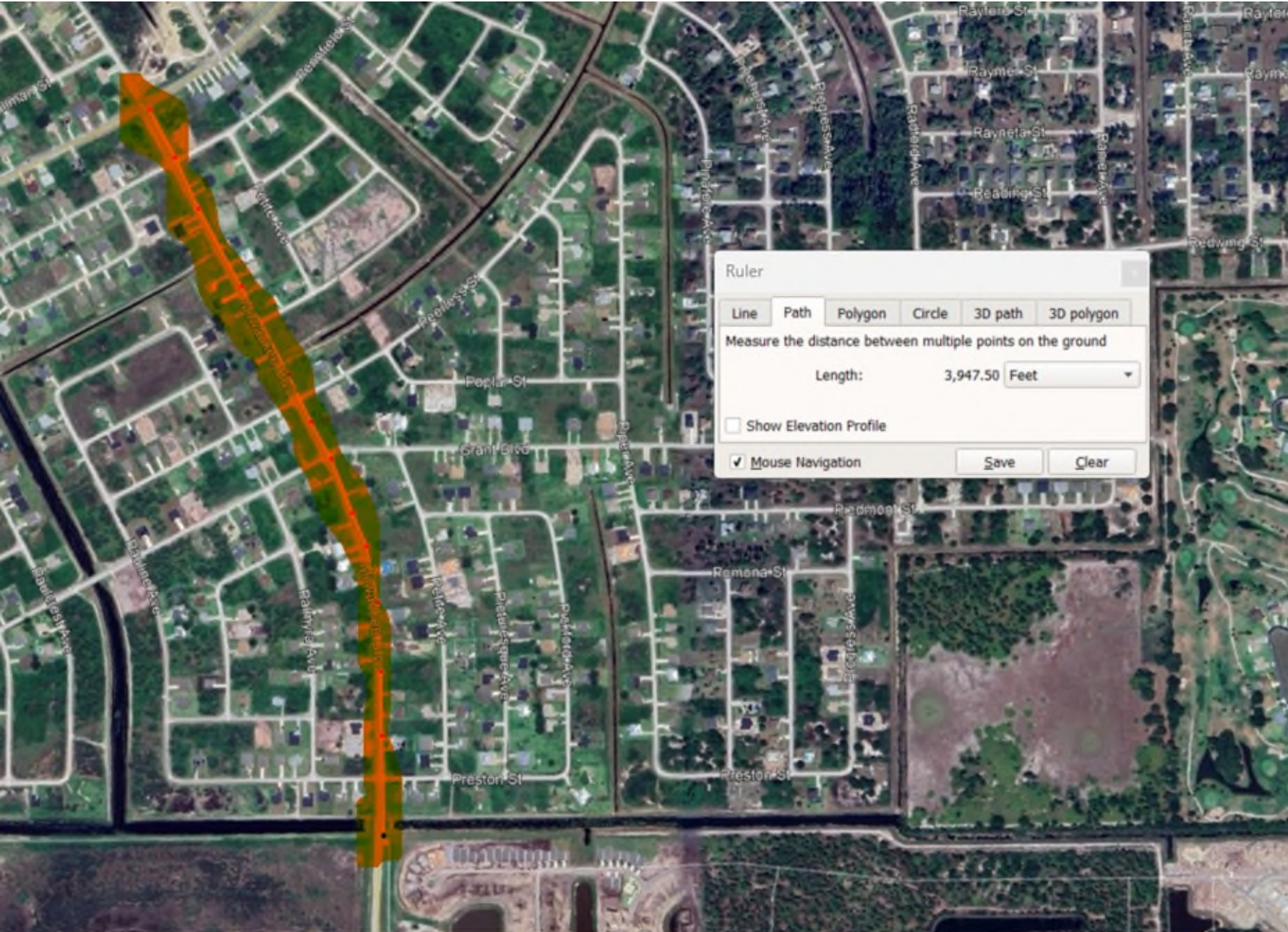
East Side of Street
From Copperhead Canal
to Alabama Rd S

Currently a Local Rd

May change once the connection
from Beth Stacey to
Canal is completed

1,800 Ft Long

Milwaukee Blvd Sidewalk



East Side of Street
From Alabama Rd S
to Savanna Lakes/ Panther Canal

Major Collector

Traffic may increase
once the connection
from Beth Stacey to
Canal is completed

3,950 Ft Long



**COPPERHEAD
GOLF CLUB**

**LEHIGH
ACRES
VETERANS
PARK**

**MAJESTIC
GOLF CLUB**

HALFWAY
POND