



North Olga Community Plan GOAL 29

“Promote and support the unique rural character, heritage, economy, quality of life, and natural resources in the North Olga Community Plan area.” (Ord. No. 11-21, 11-18)



Northeast Lee County Community Plan GOAL 27

**“Maintain, enhance,
and support the
heritage and rural
character, natural
resources, and
agricultural lands.”**

(Ord. No. 11-14, 18-18).



According to Neal Communities:

“The compact development also serves to protect the rural character and natural viewsheds through large buffers and setbacks along an arterial roadway.”

(p72-73)



According to Neal Communities:

“This amendment provides protection to the environment and benefits the public health safety and welfare of existing and future residents, at no cost to the County.”

(p 73)



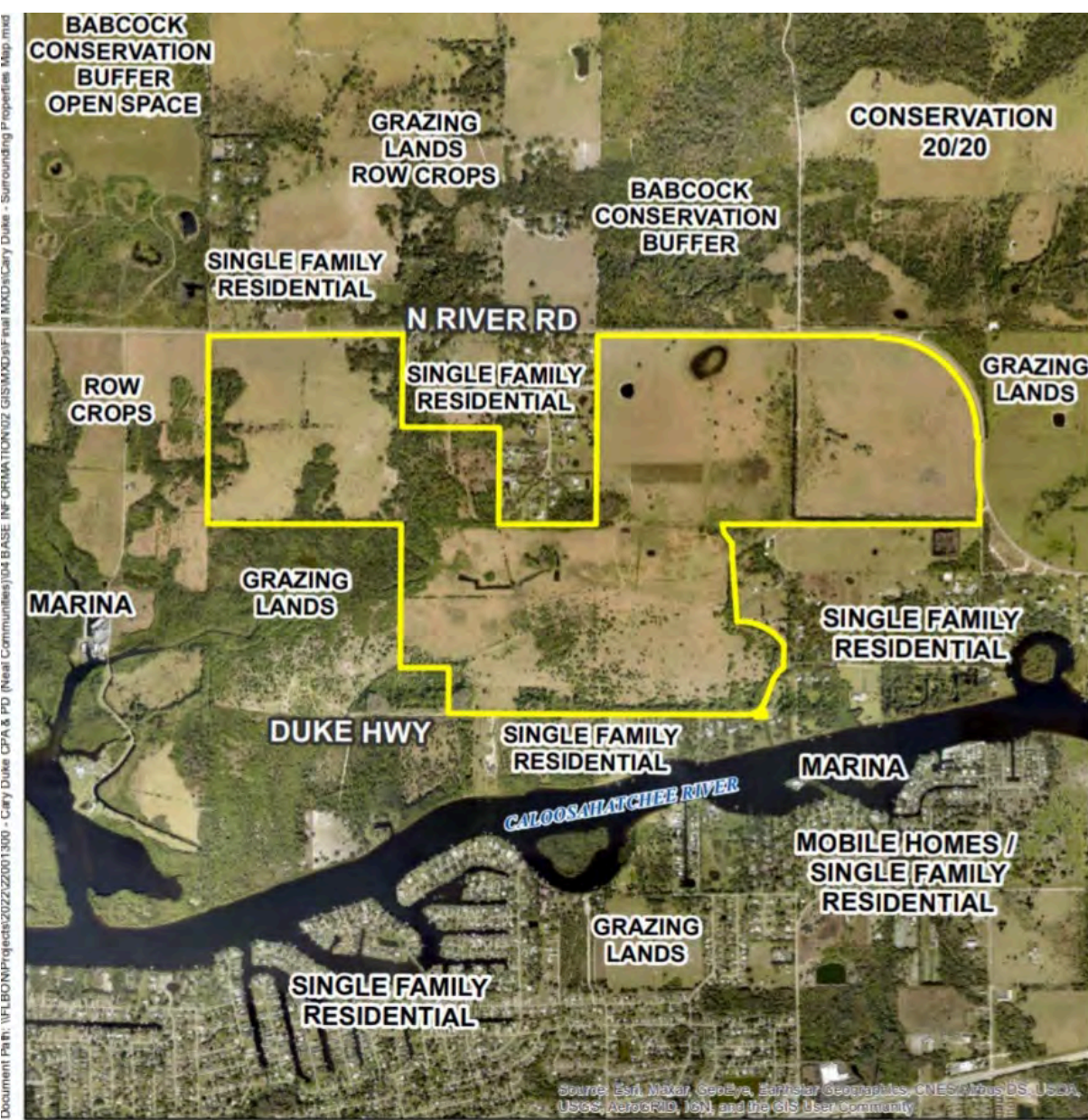
According to Neal Communities:

“In contrast, if central water and sewer is not extended to the Property, the existing AG-2 zoning could allow for over 700 large lot residential dwelling units with no requirement for open lands to be preserved.”

(p.76)

Cary+Duke+Povia CPA CPA2022-00019

Surrounding Properties Map



01300 - Cary Duke CPA & PD (Neal Communities)04 BASE INFORMATION02 GIS\MXDs\Final MXDs\Cary Duke - Surrounding Properties Map.mxd



North Olga Community Plan GOAL 29

“Promote and support the unique rural character, heritage, economy, quality of life, and natural resources in the North Olga Community Plan area.”