



Lee County
Southwest Florida

Wellfield Protection Zone Update

CPA2021-00006 - County Initiated Map Amendment

BoCC Adoption Hearing – April 20, 2022

Wellfield Protection Zone Update

Reason for Request:

- Amend the Wellfield Protection Zones to reflect updated iso-travel time contours for existing and planned production wells based on relevant and appropriate data. (F.S. 163.3177(1)(f) and 163.3177(6)(a)10.c.(I))

Board Direction:

- 8/17/2021: Update the Wellfield Protection Zone map to maintain compliance with F.S.

Wellfield Protection Zone Update

Wellfield Protection Zones

Protection Zone 1 - within the 6-month iso-travel time contour

Protection Zone 2 - within the one-year iso-travel time contour

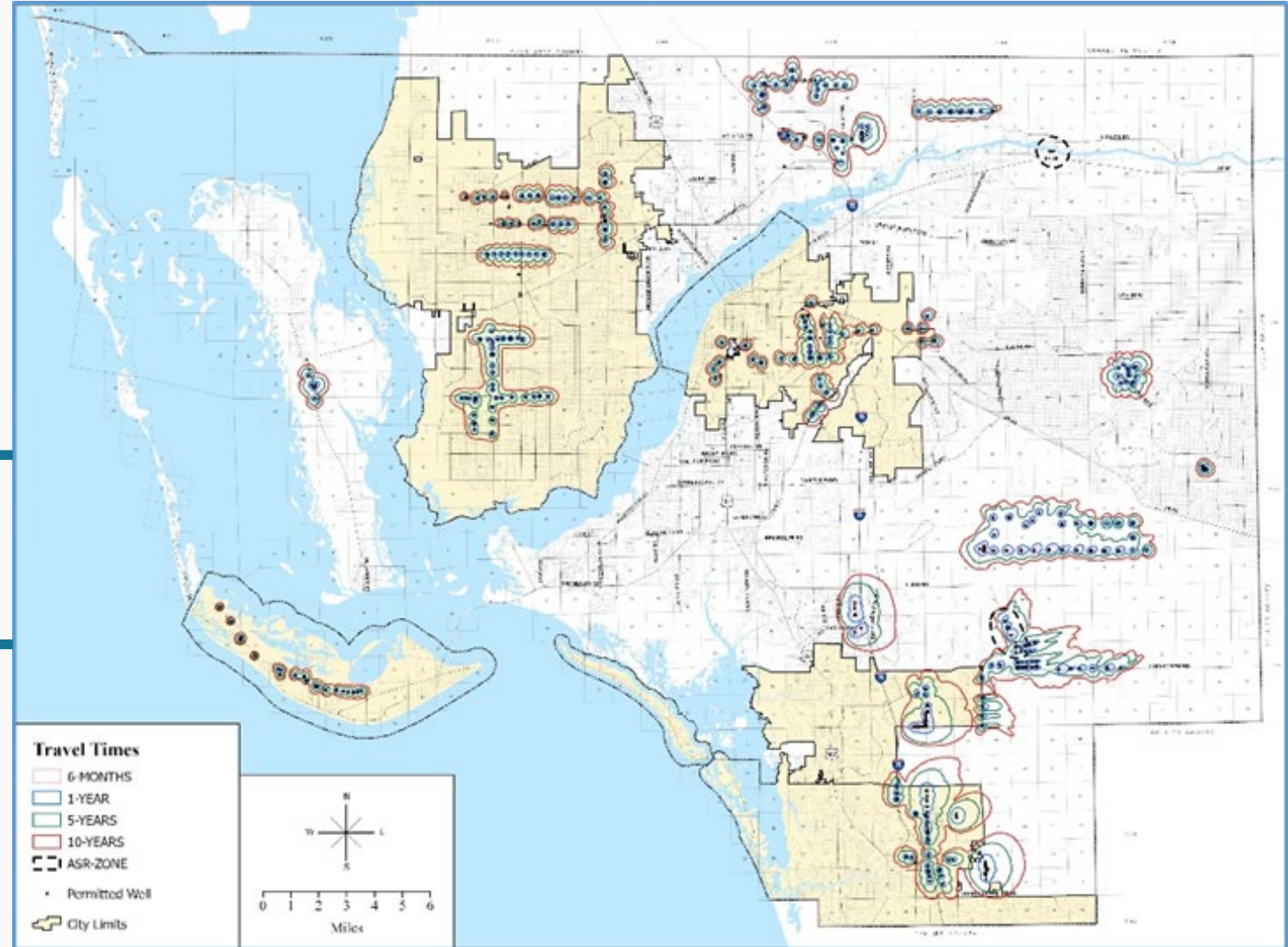
Protection Zone 3 - between the one-year and five-year iso-travel time contours

Protection Zone 4 - between the five-year and ten-year iso-travel time contours

These protection zones are used to implement the Wellfield Protection Ordinance

The Wellfield Protection Ordinance

Safeguards the public health, safety and welfare of Lee County's residents by protecting public potable water supply wells within unincorporated Lee County.



Wellfield Protection Zone Update

Transmittal

- The BoCC voted to transmit the proposed amendment to the State Reviewing Agencies on January 19, 2022. The motion was called and passed 5-0.

State Review

- Lee County received responses from the Florida Department of Economic Opportunity, Florida Fish and Wildlife Conservation Commission, Florida Department of Environmental Protection, and the Florida Department of Agriculture and Consumer Services.
- There were no objections or comments concerning the proposed amendments.

Recommendation

- *Staff recommends the BoCC **Adopt** the proposed amendment as provided in Attachment 1*

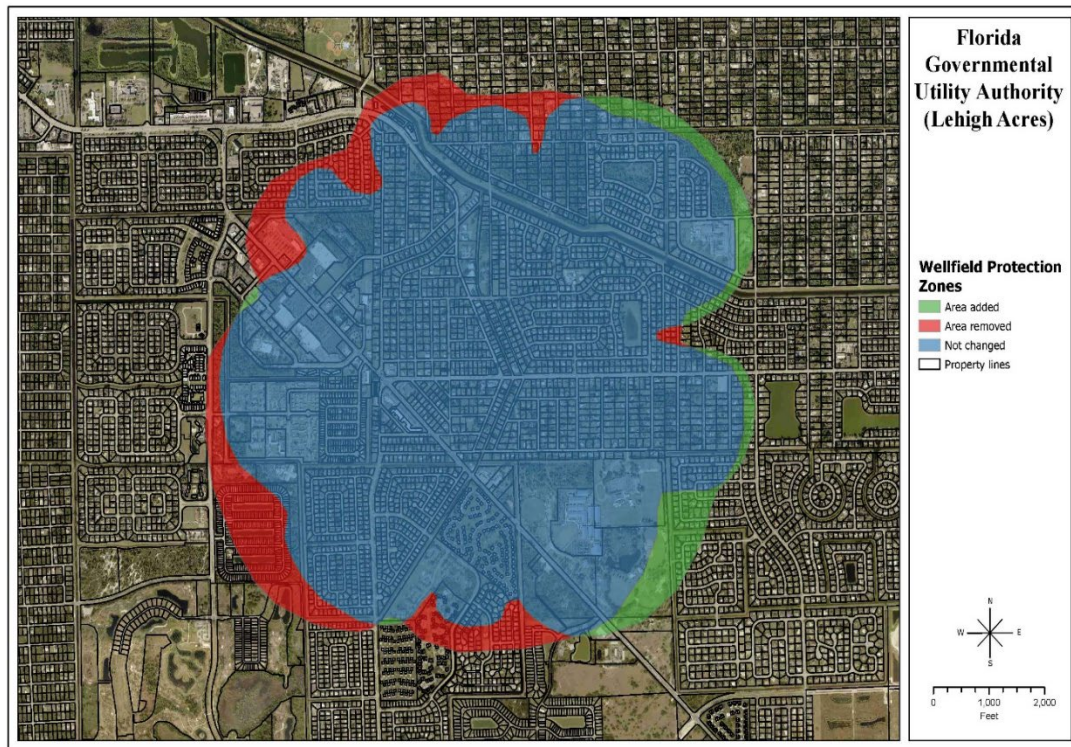
Questions?



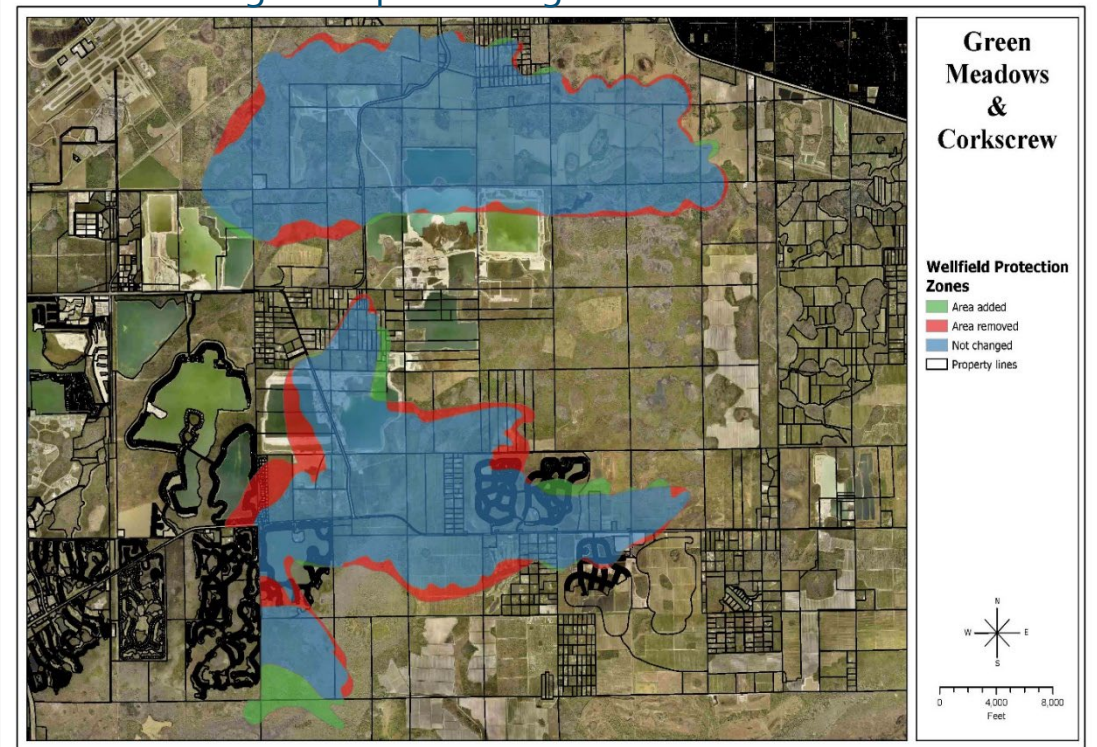
Lee County
Southwest Florida

Wellfield Protection Zone Update

- The areas being added are within the Central Urban future land use category.
- Existing uses include single family homes, places of worship, and Veterans Park.

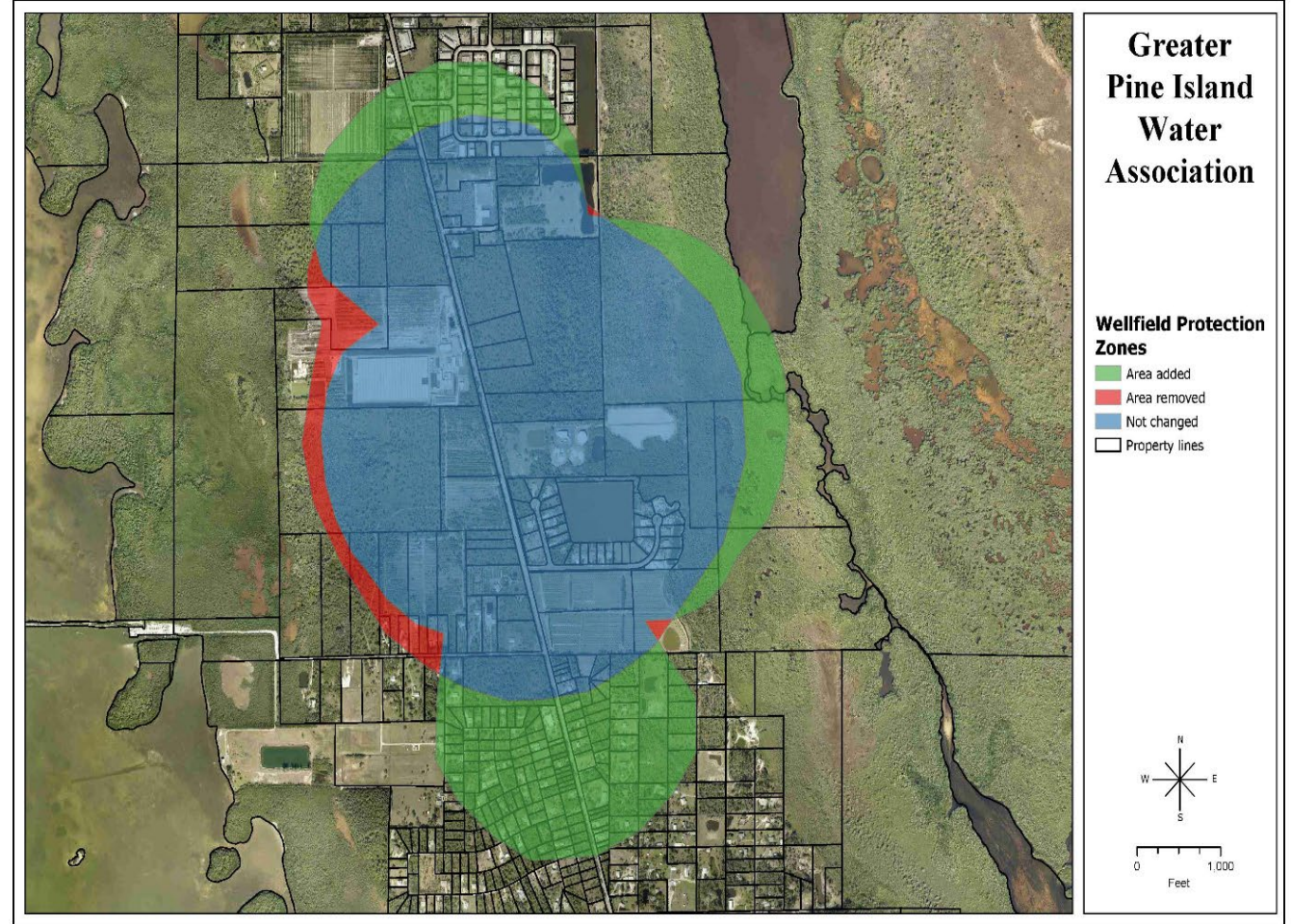


- The areas being added are within the DR/GR and Conservation Lands future land use categories.
- Existing uses include single-family homes, conservation lands, and aggregate mining, not including mine processing areas.



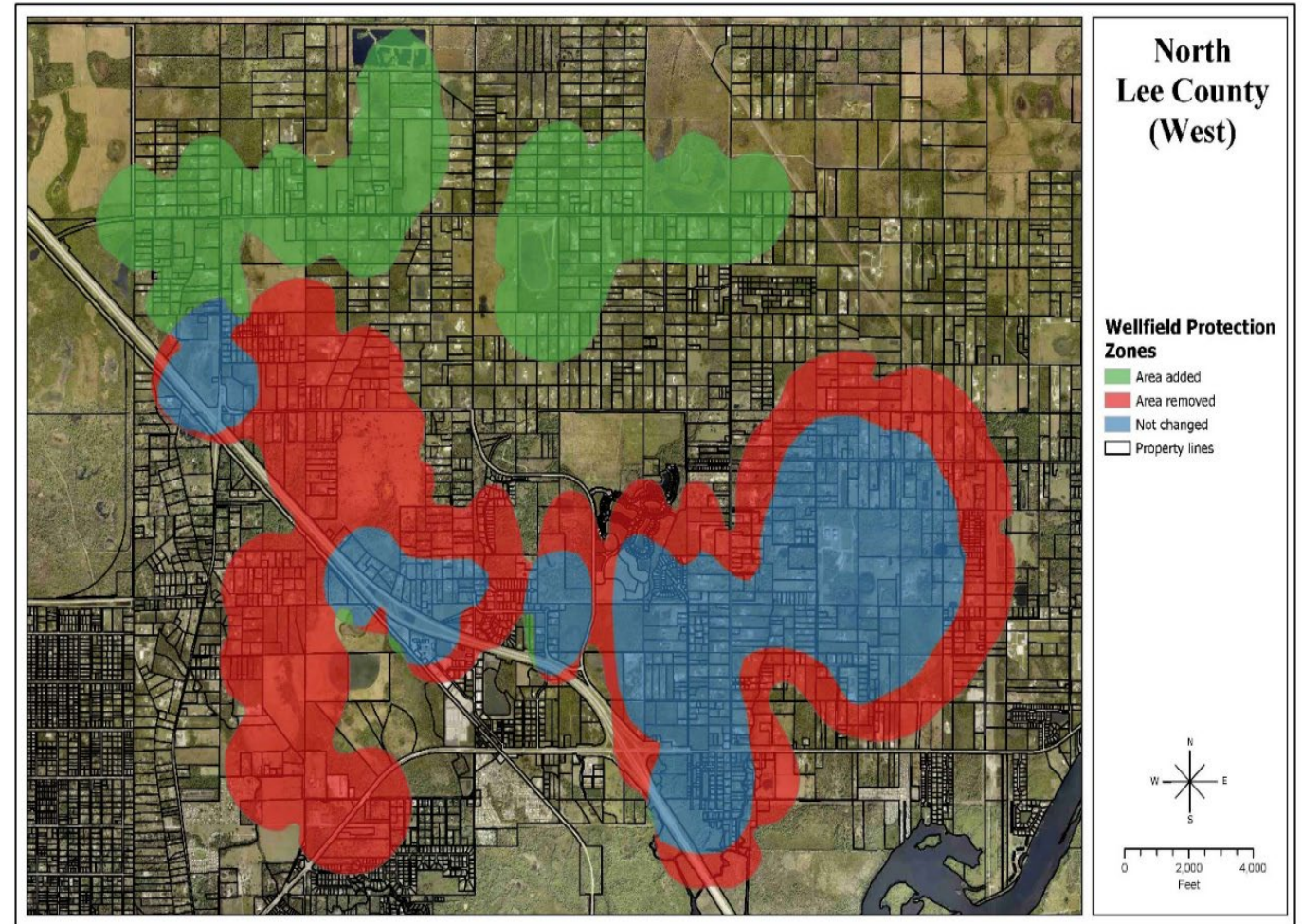
Wellfield Protection Zone Update

- The areas being added are within the Urban Community, Coastal Rural, Conservation Lands, and Wetlands future land use categories. Wells are within the Lower Hawthorn Aquifer.
- Existing uses include single-family homes, commercial, light industrial, vacant land, and conservation lands.



Wellfield Protection Zone Update

- The areas being added are within Rural, DR/GR, Open Lands, Wetlands, and Upland Conservation Lands future land use categories. Wells are within the Lower Hawthorn Aquifer.
- Existing uses consist of single-family homes, vacant land, and conservation lands.



Wellfield Protection Zone Update

- The areas being added are within New Community, Rural, Density Reduction/Groundwater Resource (DR/GR), Wetlands, and Conservation Lands. Wells are within the Lower Hawthorn Aquifer.
- Existing uses consist of single-family homes, Babcock Ranch Community MPD, vacant land, and conservation lands.

