



Lee County
Southwest Florida

Wellfield Protection Zone Update

CPA2021-06 - County Initiated Map Amendment

Local Planning Agency Hearing – December 13, 2021

Wellfield Protection Zone Update

Reason for Request:

- Amend the Wellfield Protection Zones to reflect updated iso-travel time contours for existing and planned production wells based on relevant and appropriate data. (F.S. 1633177(1)(f) and 163.3177(6)(a)10.c.(I))

Board Direction:

- 8/17/2021: Update the Wellfield Protection Zone map to maintain compliance with F.S.

Wellfield Protection Zone Update

Wellfield Protection Zones

Protection Zone 1 - within the 6-month iso-travel time contour

Protection Zone 2 - within the one-year iso-travel time contour

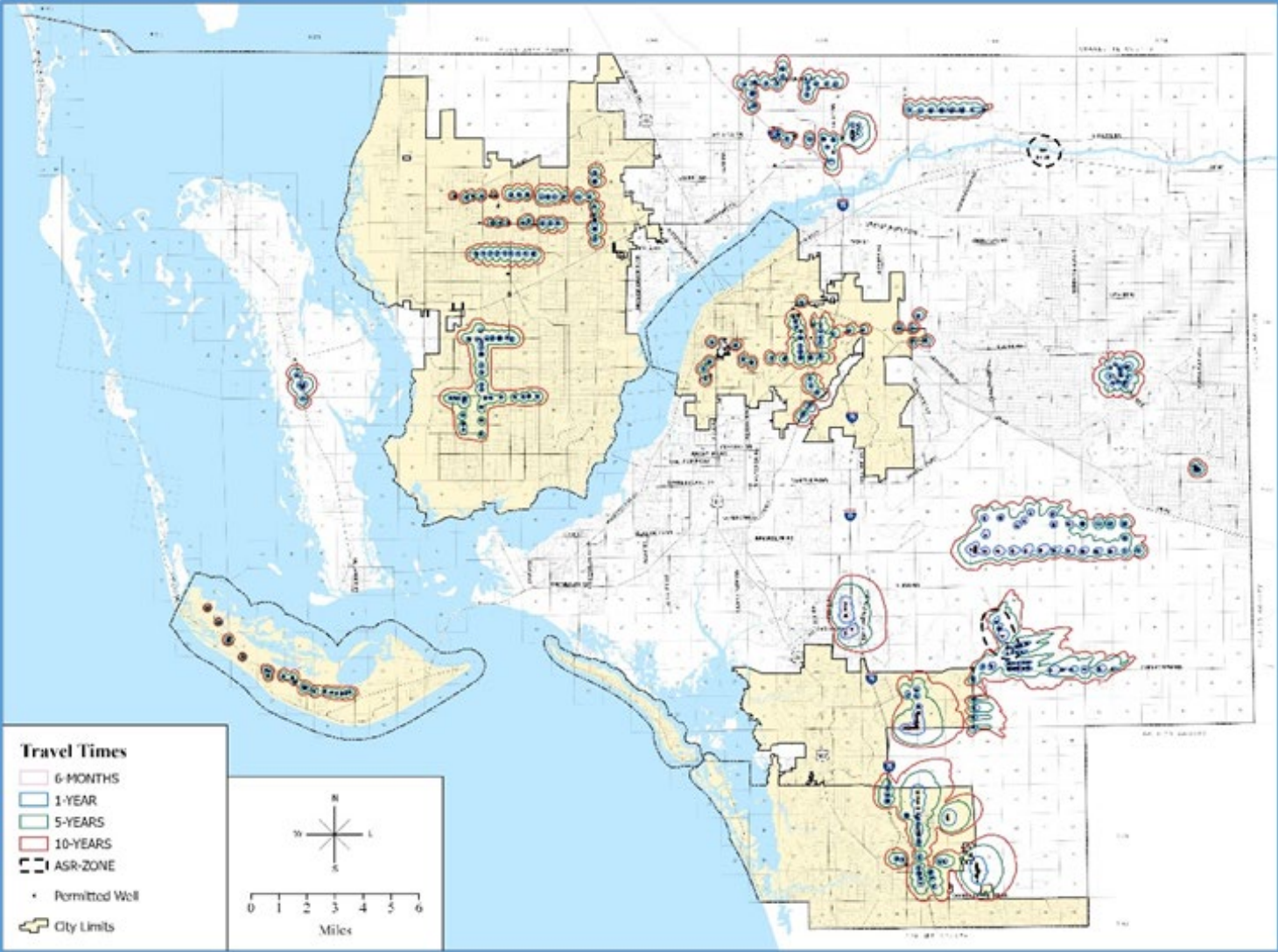
Protection Zone 3 - between the one-year and five-year iso-travel time contours

Protection Zone 4 - between the five-year and ten-year iso-travel time contours

These protection zones are used to implement the Wellfield Protection Ordinance

The Wellfield Protection Ordinance

Safeguards the public health, safety and welfare of Lee County's residents by protecting public potable water supply wells within unincorporated Lee County.



Wellfield Protection Zone Update

Conclusion

- The proposed amendment is internally consistent with the Lee Plan and in compliance with state statutes
- The updated iso-travel time contours will not change allowable uses on affected property based on current State laws and/or local ordinances

Recommendation

- ***Transmit*** the proposed amendment to the state reviewing agencies as provided in Attachment 1

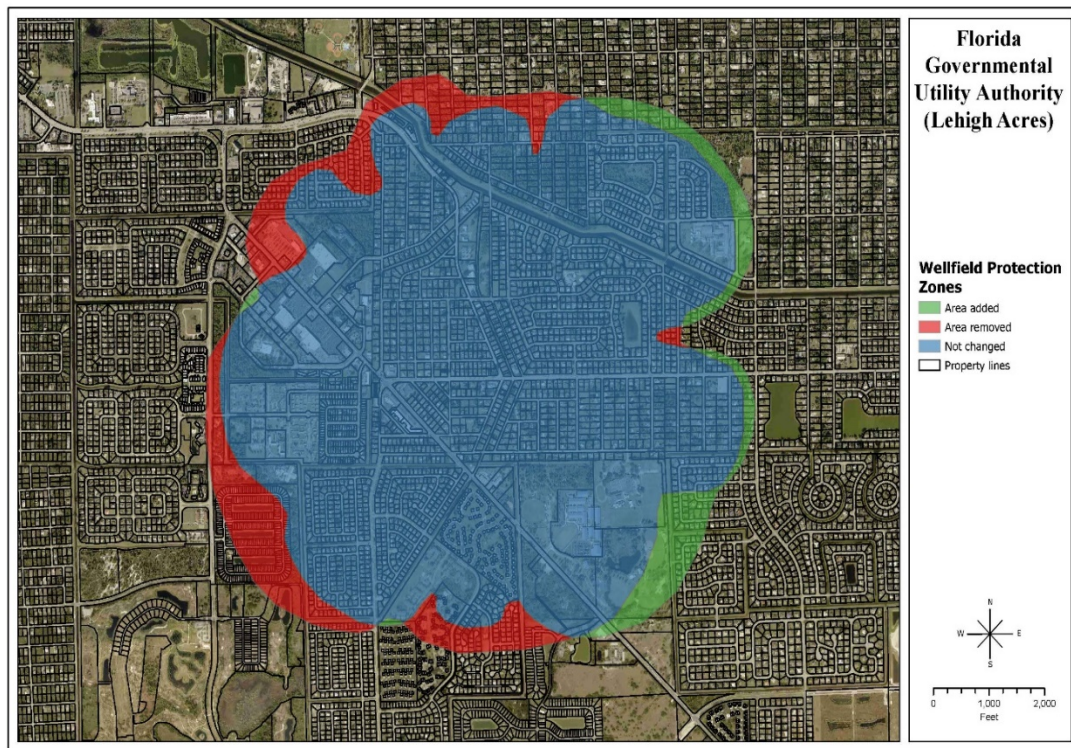
Questions?



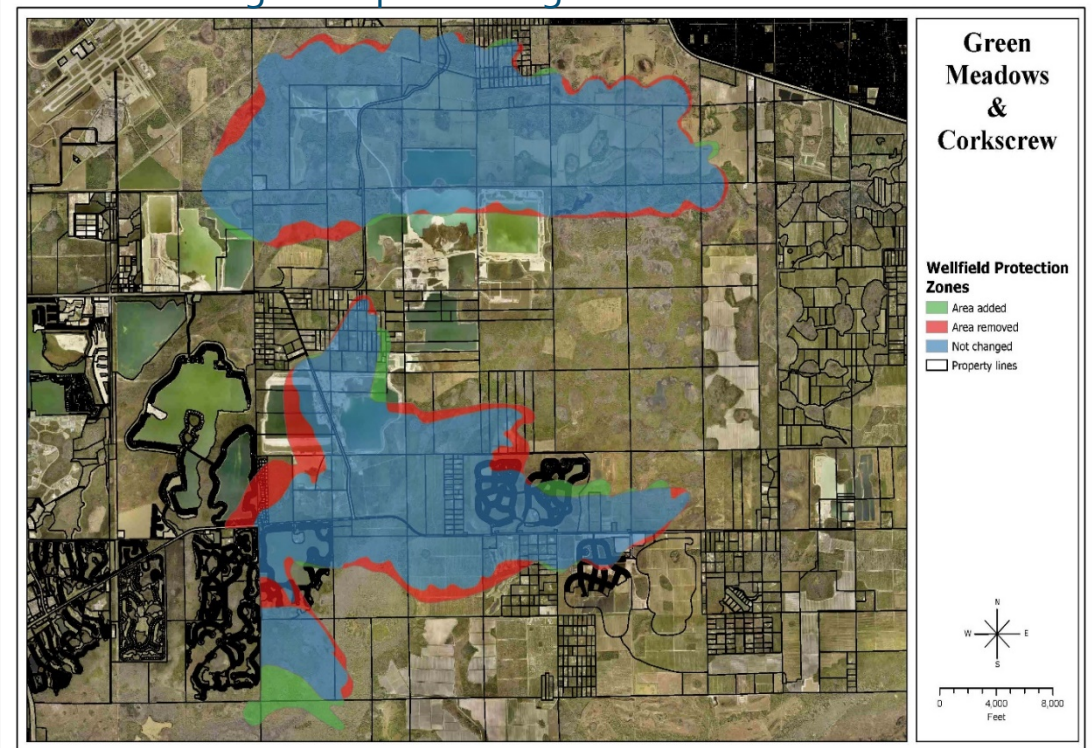
Lee County
Southwest Florida

Wellfield Protection Zone Update

- The areas being added are within the Central Urban future land use category.
- Existing uses include single family homes, places of worship, and Veterans Park.

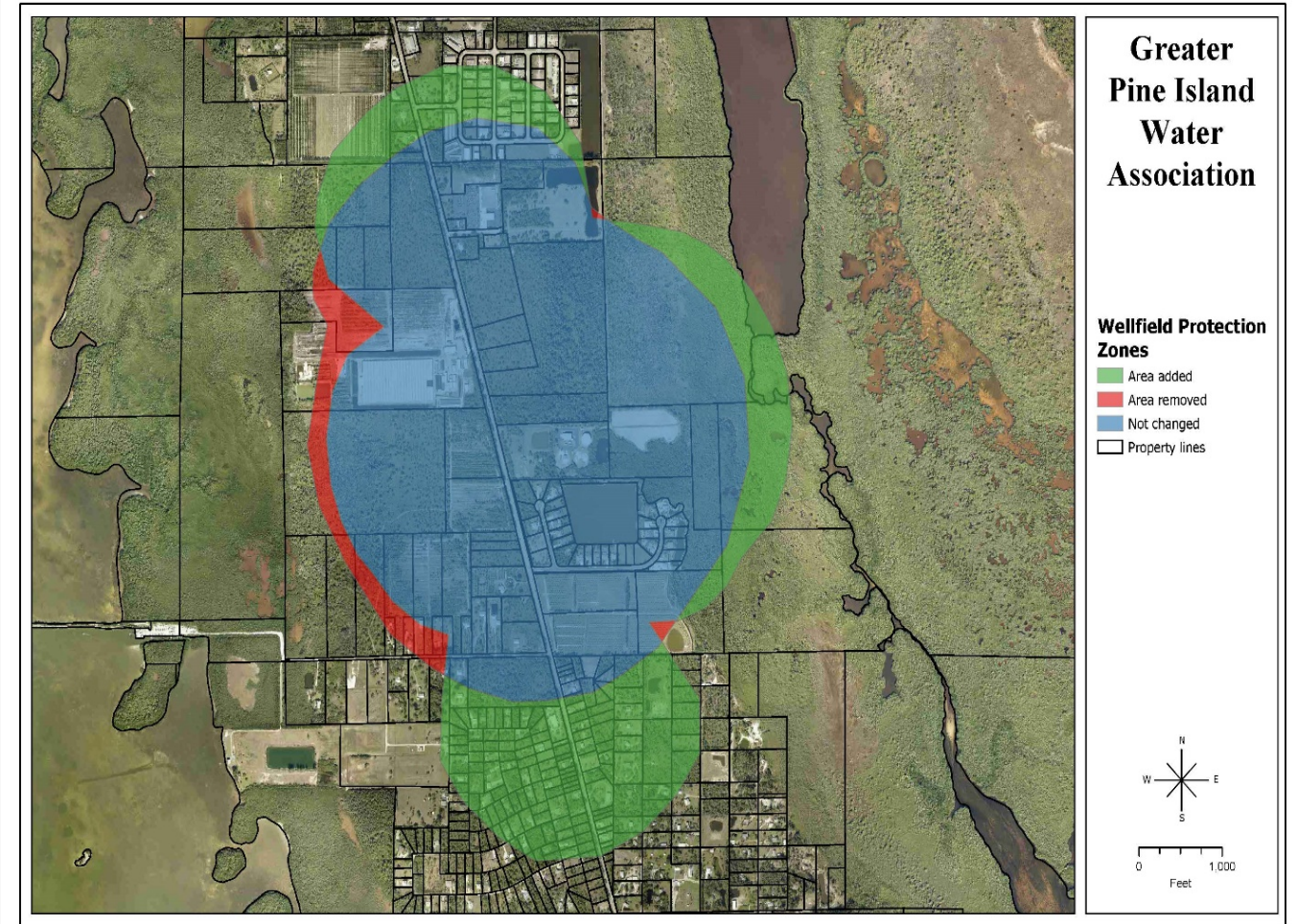


- The areas being added are within the DR/GR and Conservation Lands future land use categories.
- Existing uses include single-family homes, conservation lands, and aggregate mining, not including mine processing areas.



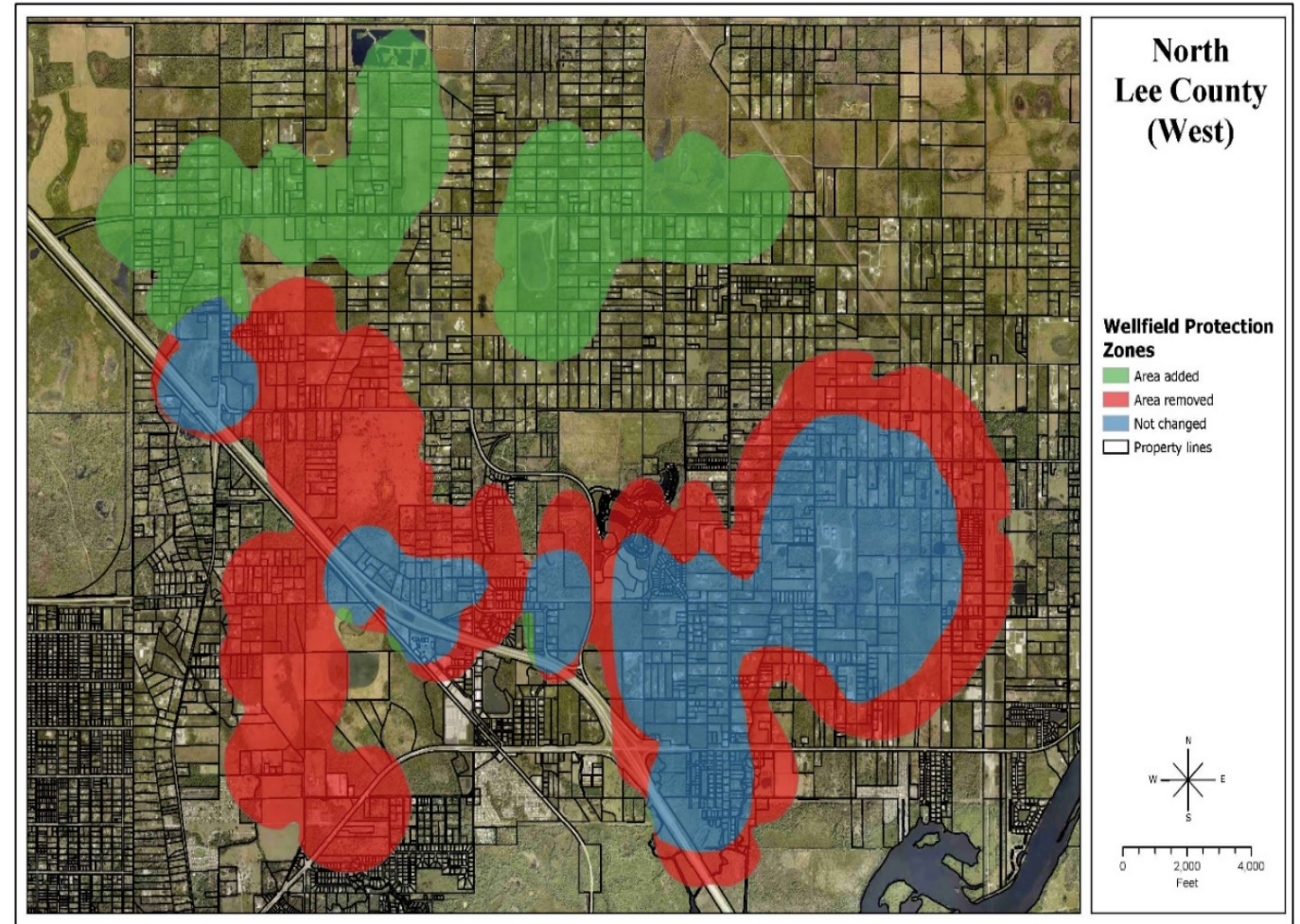
Wellfield Protection Zone Update

- The areas being added are within the Urban Community, Coastal Rural, Conservation Lands, and Wetlands future land use categories. Wells are within the Lower Hawthorn Aquifer.
- Existing uses include single-family homes, commercial, light industrial, vacant land, and conservation lands.



Wellfield Protection Zone Update

- The areas being added are within Rural, DR/GR, Open Lands, Wetlands, and Upland Conservation Lands future land use categories. Wells are within the Lower Hawthorn Aquifer.
- Existing uses consist of single-family homes, vacant land, and conservation lands.



Wellfield Protection Zone Update

- The areas being added are within New Community, Rural, Density Reduction/Groundwater Resource (DR/GR), Wetlands, and Conservation Lands. Wells are within the Lower Hawthorn Aquifer.
- Existing uses consist of single-family homes, Babcock Ranch Community MPD, vacant land, and conservation lands.

