



Lee County
Southwest Florida

Commerce Lake Parcel

CPA2019-07 - County Initiated Map Amendment

BoCC Adoption Hearing— June 2, 2021

Commerce Lakes Parcel

Project Summary

Request:

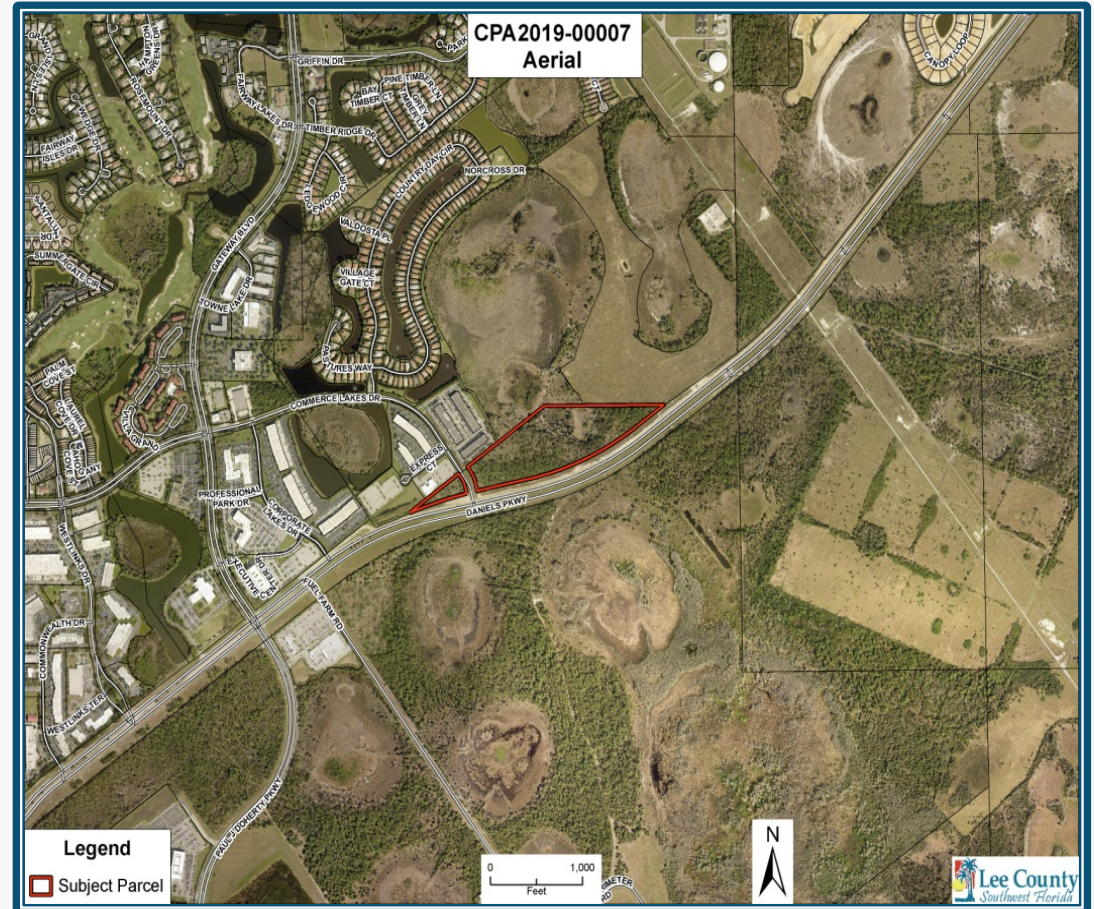
Amend the Future Land Use Map (Map 1, Page 1) from Airport Lands and Wetlands to New Community and Wetlands, and update the Airport Noise Zone (Map 1, Page 5) on ±22 acres.

Location:

Northeast of RSW; Intersection of Daniels Parkway and Commerce Lakes Drive (both sides).

Surrounding Uses:

North, East and West: Mixture of Light Industrial, Commercial, and Residential
South: RSW



Commerce Lakes Parcel

Past BoCC Action

- The proposed amendments were transmitted to the State Reviewing Agencies on March 3, 2021. (Motion passed 5-0)

State Reviewing Agency Objections, Recommendations and Comments

- Lee County received responses from the following reviewing agencies addressing the transmitted amendment:
 - Florida Department of Economic Opportunity (DEO),
 - Florida Department of Environmental Protection (DEP),
 - Florida Department of Transportation (DOT),
 - Florida Fish and Wildlife Conservation Commission (FWC), and
 - South Florida Water Management District (SFWMD).
- There were no objections concerning the proposed amendments. FDOT and FWC provided technical assistance comments.

Recommendation

- Staff recommends that the BoCC **adopt** the proposed amendment as transmitted.