

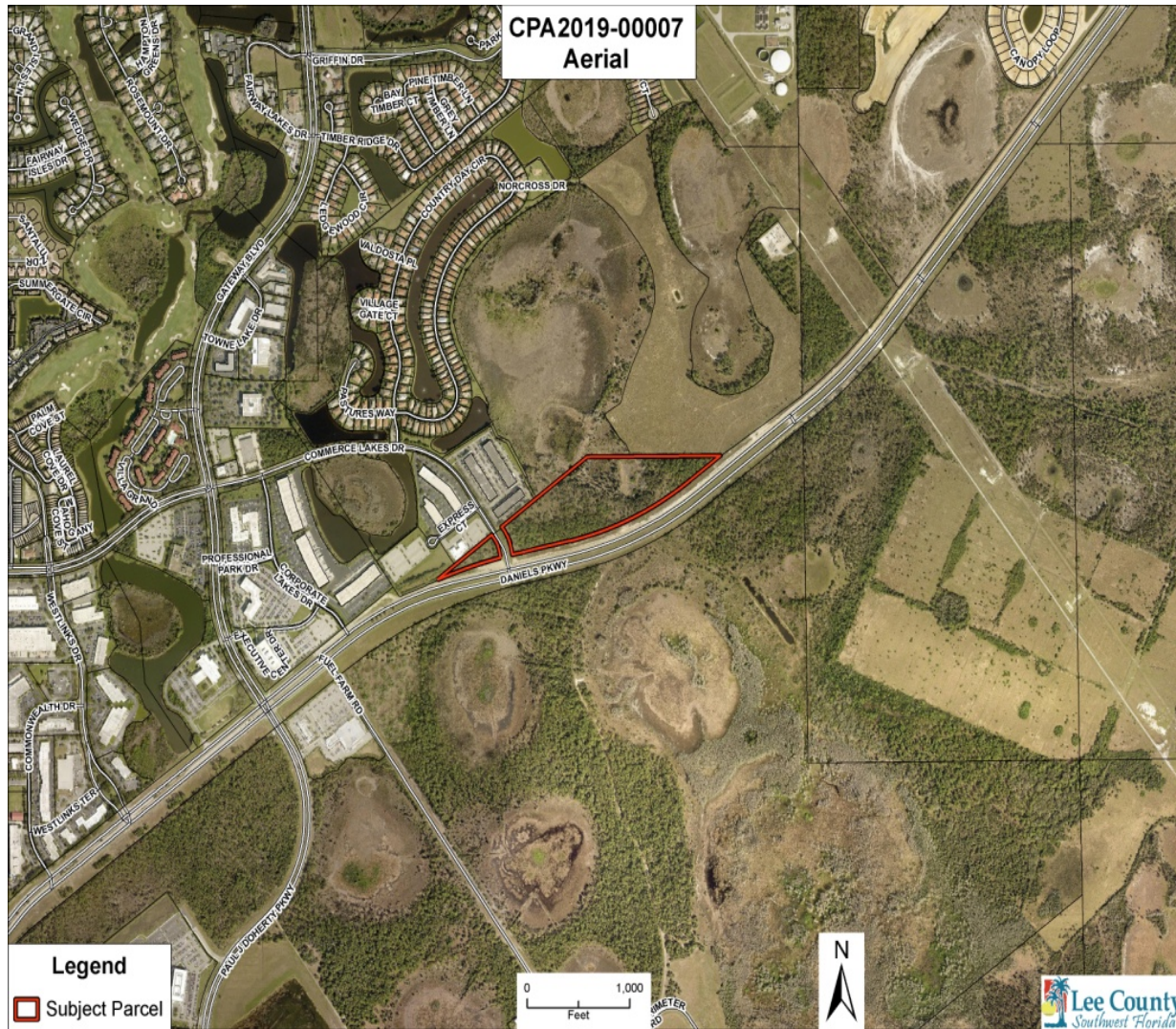
COMMERCE LAKES PARCEL

CPA2019-00007

County Initiated Map Amendment

BoCC Transmittal Hearing – March 3, 2021

Request, Location and Surrounding Uses



- ❑ **Request**
Amend the Future Land Use Map (Map 1, Page 1) from Airport Lands and Wetlands to New Community and Wetlands, and update the Airport Noise Zone (Map 1, Page 5) on ± 22 acres.
- ❑ **Location**
Northeast of RSW; Intersection of Daniels Parkway and Commerce Lakes Drive (both sides).
- ❑ **Surrounding Uses**
North, East and West: Mixture of Light Industrial, Commercial, and Residential
South: RSW

CPA2019-00007: Commerce Lakes Parcel

- ❑ **Policy 1.6.1:**
 - ❑ Allows for cohesive development and range of uses
 - ❑ The expansion of the New Community future land use category in the Gateway area will include 2,524 acres
- ❑ **Policy 1.7.1:** Map 1, page 5 will be amended to reflect the current noise contours
- ❑ **Objective 2.2:** Growth is directed to areas with existing development
- ❑ **Policy 6.1.4:** Commercial Development directed to areas with compatible uses, and adequate public services

- ❑ Staff and the LPA recommend the BoCC transmit CPA2019-00007 as provided in Attachment 1.