

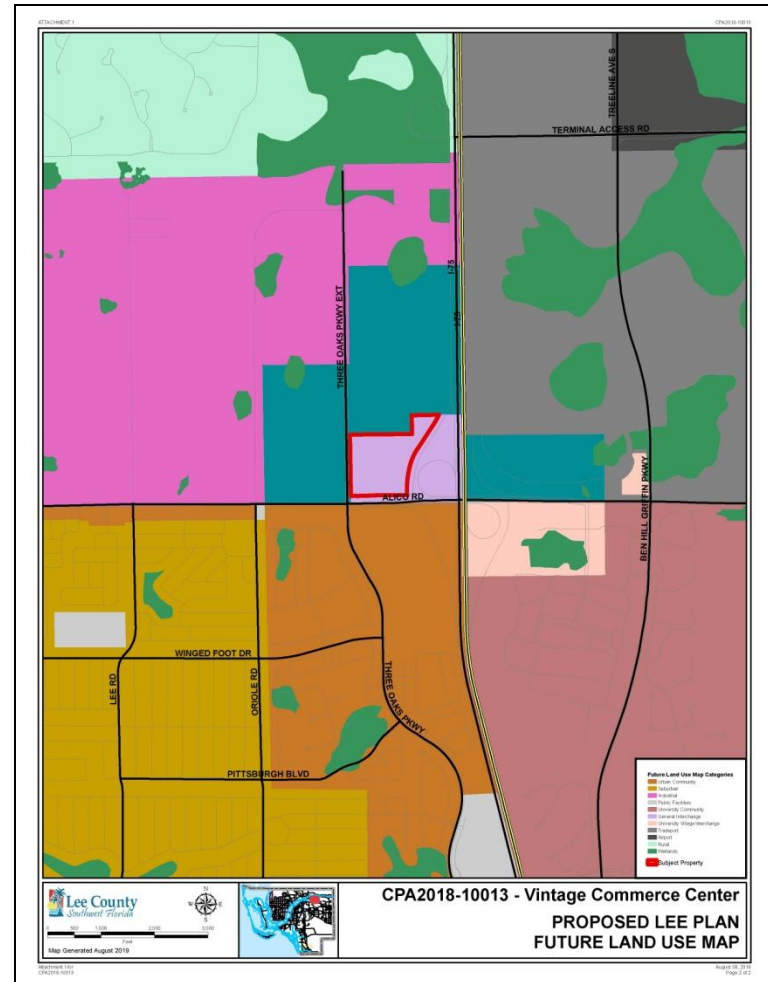
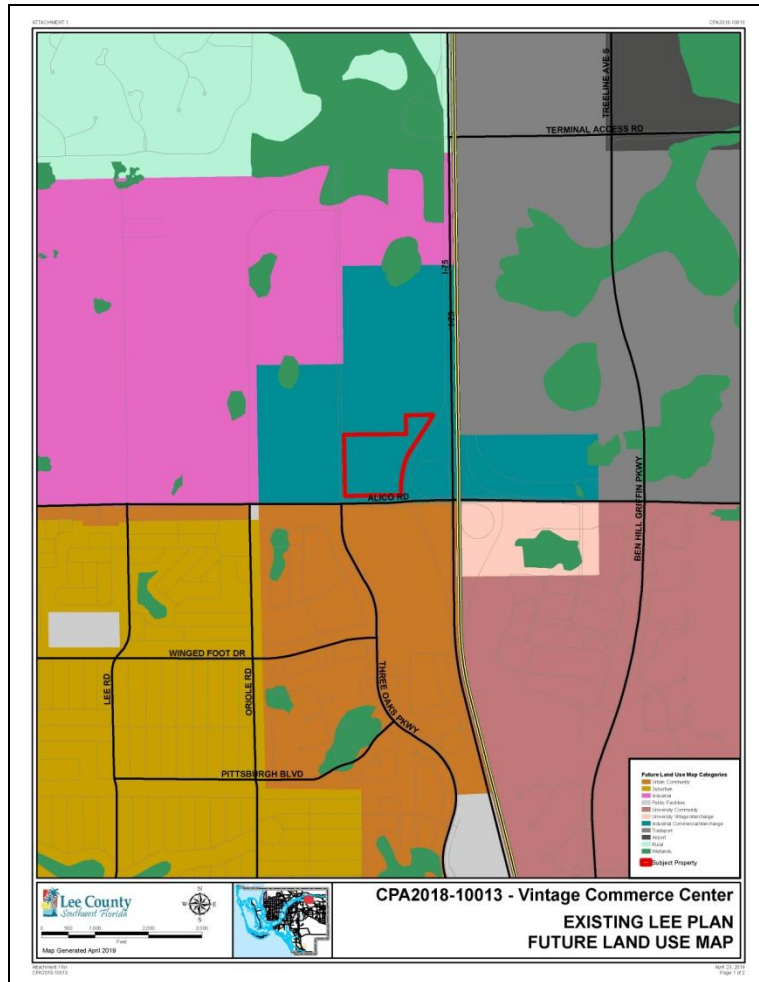
CPA2018-10012 &
CPA2018-10013
VINTAGE COMMERCE CENTER

Privately Initiated – Map Amendment

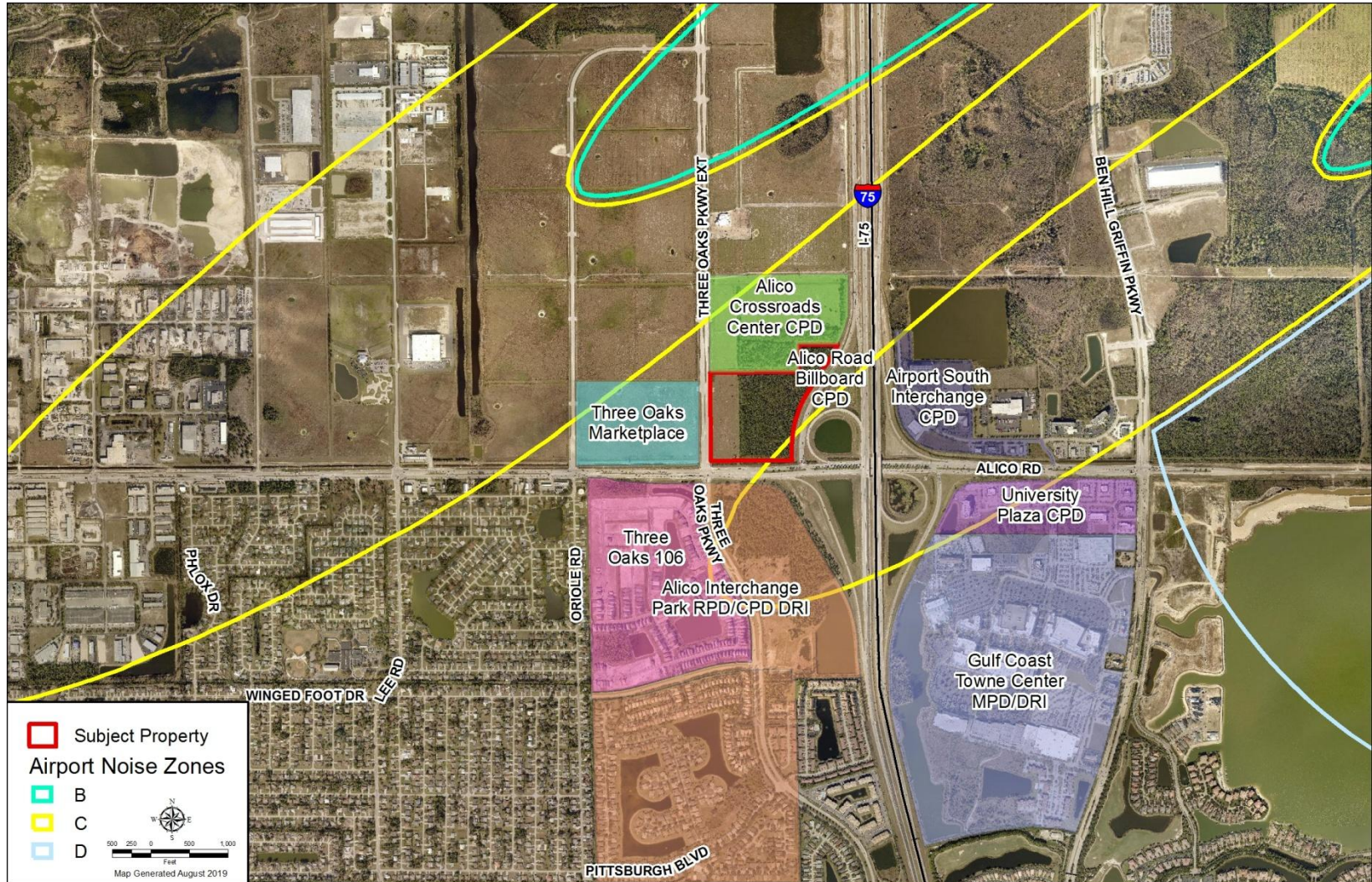
Local Planning Agency

August 26, 2019

FUTURE LAND USE MAP



SURROUNDING AREA:



LEE PLAN CONSISTENCY:

- Vision: Hi Tech/Clean Industry Businesses
- Multi-Family Housing to Serve Industries and Businesses (Policy 135.1.9)
- Planned Development Rezone:
 - ▣ Airport Noise (5.1.2)
 - ▣ Industrial/Residential Interface (Policies 5.1.2, 5.1.5, 7.18, 7.1.9)

STAFF RECOMMENDATION:

- Staff recommends that the BoCC *transmit* the proposed map & text amendments to the State Reviewing Agencies.