

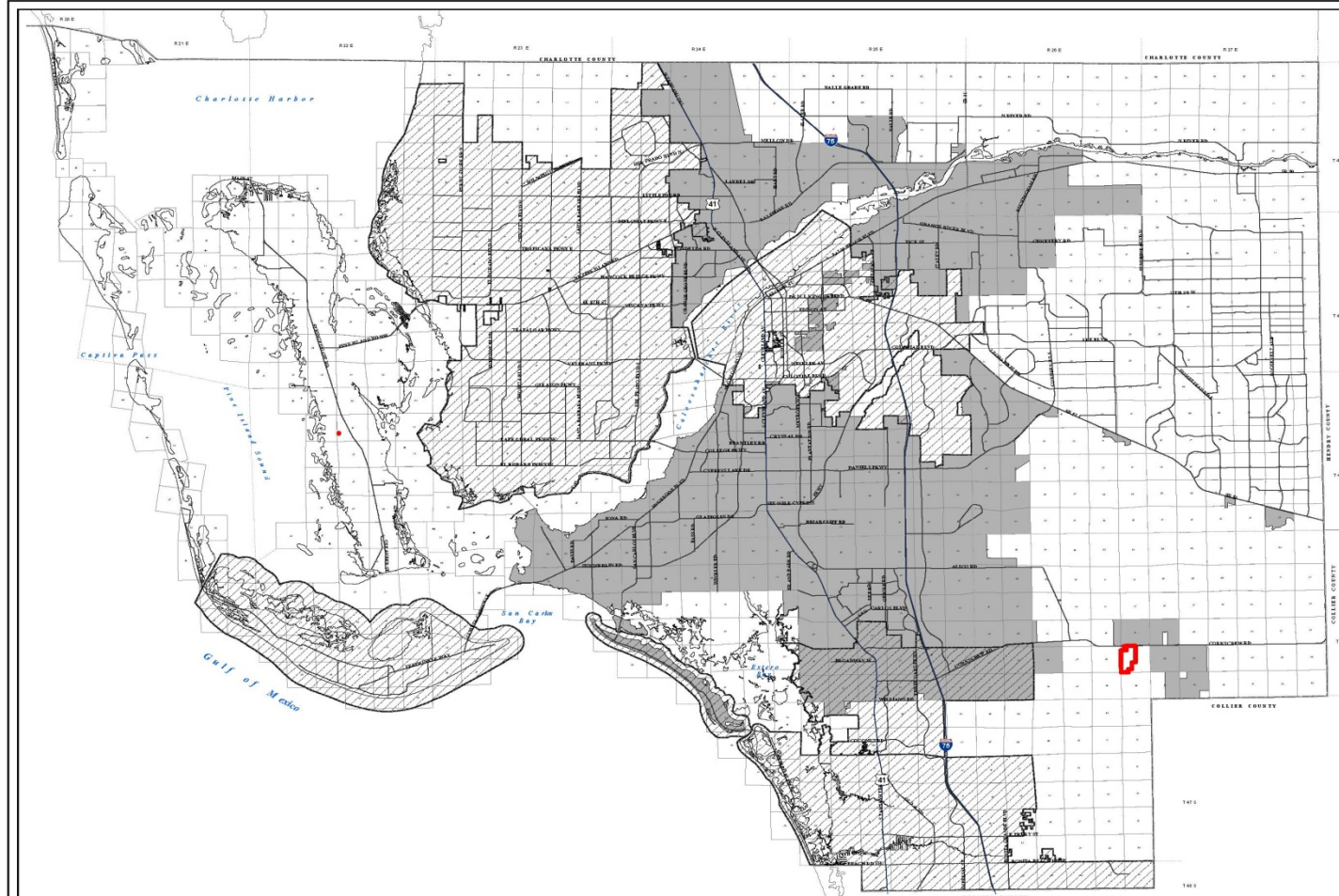
# CPA2018-10010 OLD CORKSCREW GOLF CLUB MAP 6

Privately Initiated – Map Amendment

Local Planning Agency

February 25, 2019

# Map 6: Future Water Service Areas



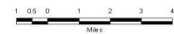
## LEE COUNTY UTILITIES FUTURE WATER SERVICE AREAS

### Legend

- City Limits
- Future Water Service Areas

**CPA2018-10010  
OLD CORKSCREW GOLF CLUB**

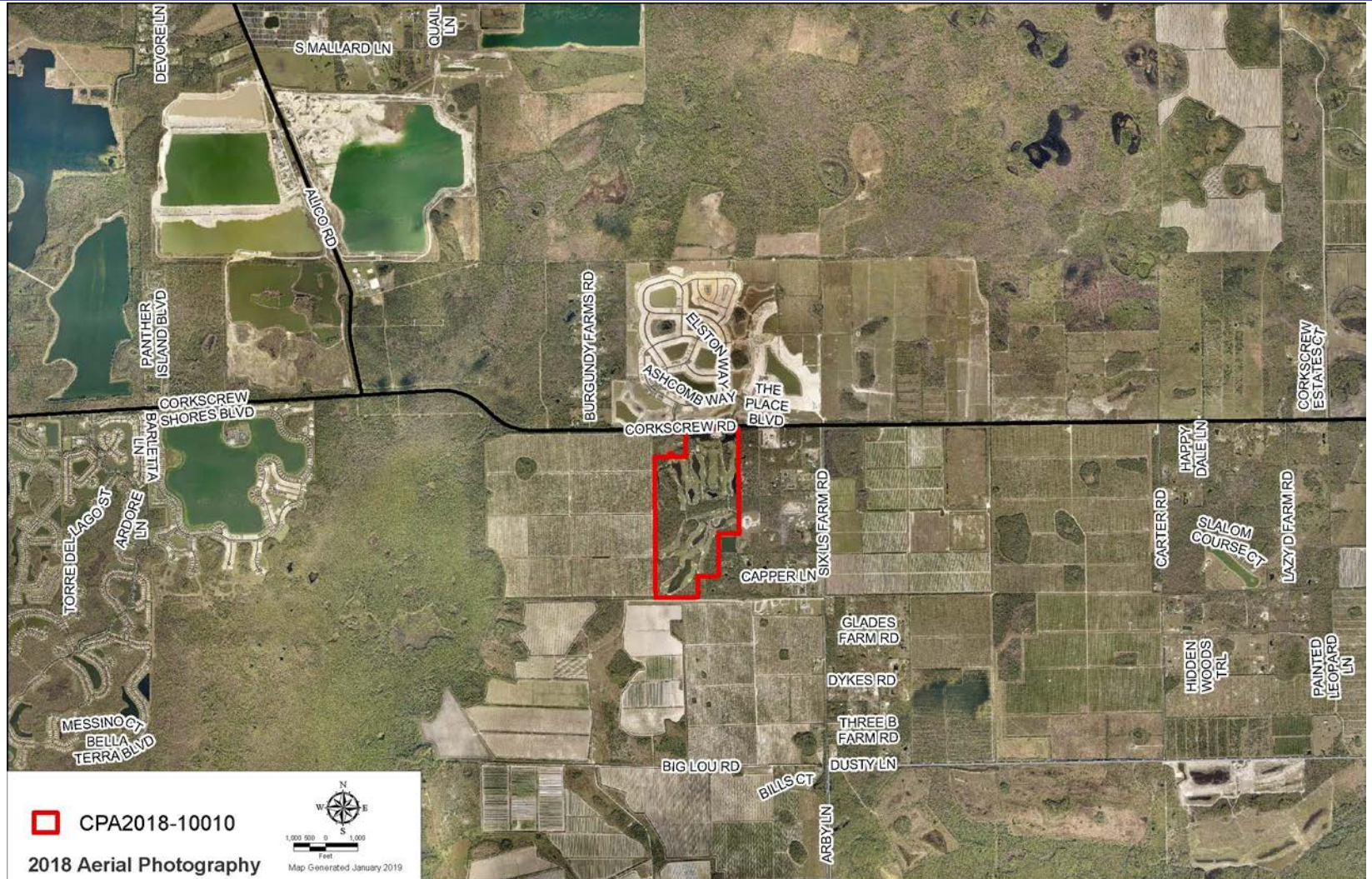
- Extend the existing service area to cover subject property



Map Generated: January 2019  
Produced By: DCD/Division of Planning  
City Limits current to date of map generation  
Adopted by Ord. No. 89-02, 10/1/1989  
Amended by Ord. Nos. 09-22, 03-19, 10-06, 10-40, 10-43,  
12-24, 13-16, 14-21, 15-13, 15-14, 17-06, 17-23

Lee Plan Map 6

# Surrounding Area:



# Lee Plan Consistency:

- No Density/Intensity Changes
  - ▣ Goals 33 & 13, Policy 1.4.5
  
- Lee County Utilities - Adequate Capacity
  - ▣ Existing Water Lines Adjacent to Site
  
- Protects Groundwater
  - ▣ Goal 63, Objective 13.4, Policies 61.1.6 & 115.1.6

# Staff Recommendation:

---

- Staff recommends that the BoCC *transmit* the proposed map amendment to the State Reviewing Agencies.