

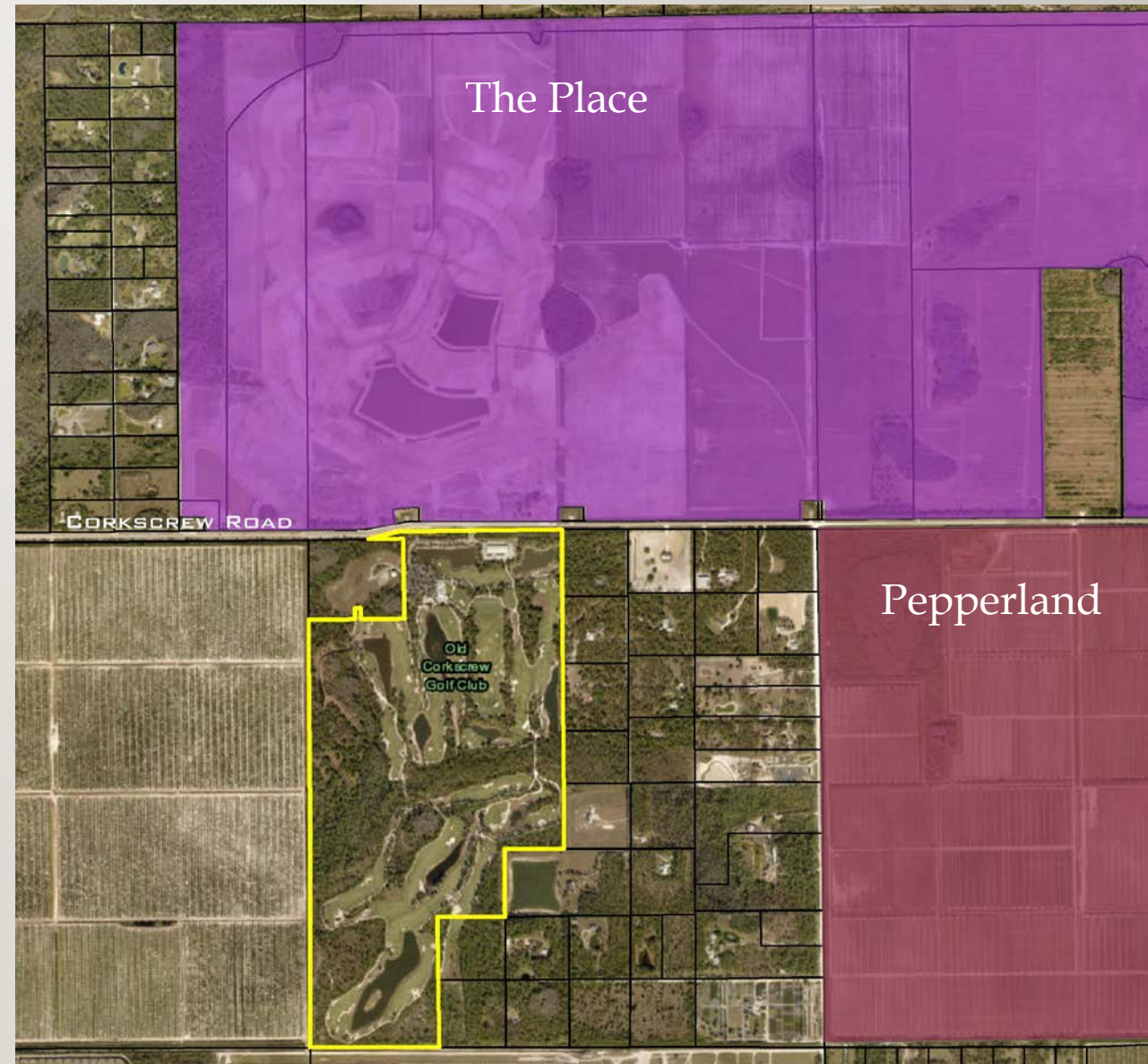
OLD CORKSCREW GOLF CLUB UTILITY CPA

LPA PRESENTATION



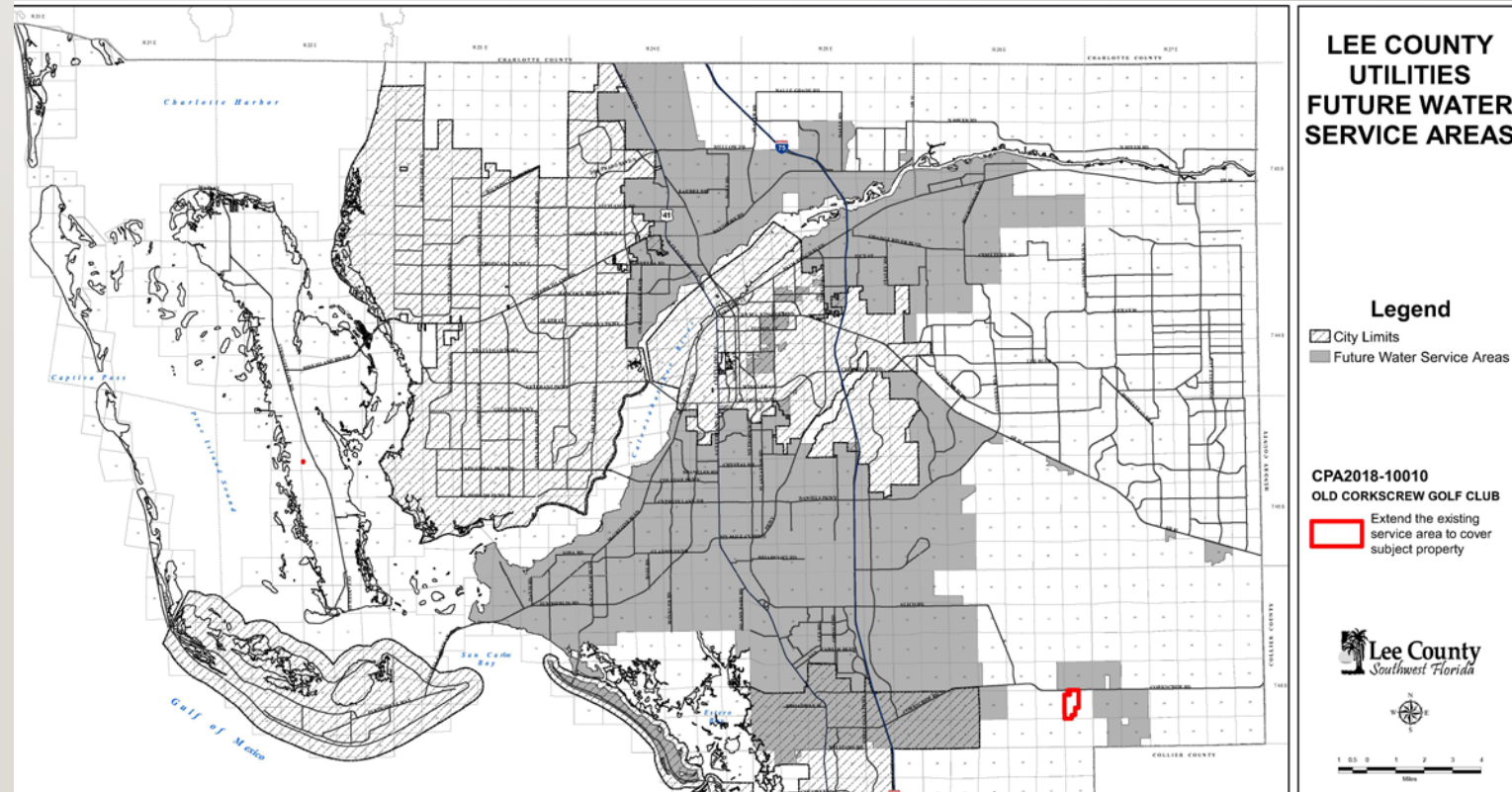
PROPERTY LOCATION

- ❑ South of Corkscrew Road
- ❑ South of the Place
- ❑ West of Pepperland and Verdana
- ❑ East side of 6Ls farm



FUTURE WATER SERVICE AREA MAP

- ❑ Service provided to the north, east and west
- ❑ Utility lines in front of the property
- ❑ Currently served by a package facility



CURRENT PACKAGE PLANT

- ❑ Plant currently serves the golf course
- ❑ Frequent failures in the system leading to unsafe conditions and “boil water” notices
- ❑ 1,870 gallons per day will shift to Lee County Utilities water
- ❑ LCU water will be used for the clubhouse and restroom facilities only
- ❑ Removal of Package Facility protects wellfield
 - ❑ Objective 13.4

QUESTIONS?

