



METRON

SURVEYING & MAPPING, LLC

LAND SURVEYORS • PLANNERS

LEGAL DESCRIPTION
OF A PARCEL LYING IN
SECTION 25, TOWNSHIP 46 SOUTH, RANGE 26 EAST,
LEE COUNTY, FLORIDA

**OLD CORKSCREW PLANTATION GOLF CLUB
(OVERALL DESCRIPTION)**

A TRACT OF LAND LYING IN THE STATE OF FLORIDA, COUNTY OF LEE, IN SECTION 25, TOWNSHIP 46 SOUTH, RANGE 26 EAST, BEING MORE PARTICULARLY DESCRIBED AS FOLLOWS:

COMMENCING AT THE NORTHWEST CORNER OF SECTION 25, TOWNSHIP 46 SOUTH, RANGE 26 EAST; THENCE S.00°34'15"E. ALONG THE WEST LINE OF SAID SECTION 25, A DISTANCE OF 50.00 FEET TO THE SOUTH RIGHT-OF-WAY LINE OF CORKSCREW ROAD; THENCE N.89°03'10"E., ALONG THE SAID SOUTH RIGHT-OF-WAY LINE, A DISTANCE OF 505.41 FEET TO THE **POINT OF BEGINNING** AND THE BEGINNING OF A CURVE TO THE LEFT HAVING A RADIUS OF 1150.00 FEET; THENCE ALONG SAID CURVE AND SAID SOUTH RIGHT-OF-WAY LINE, THROUGH A CENTRAL ANGLE OF 10°30'00", A CHORD BEARING OF N.83°48'10"E., A CHORD LENGTH OF 210.45 FEET AND AN ARC LENGTH OF 210.75 FEET; THENCE N.78°33'10"E., ALONG SAID SOUTH RIGHT-OF-WAY LINE A DISTANCE OF 168.70 FEET TO A POINT ON THE NORTH LINE OF SAID SECTION 25; THENCE N.89°03'10"E., LEAVING SAID SOUTH RIGHT-OF-WAY LINE AND ALONG THE NORTH LINE OF SAID SECTION 25 A DISTANCE OF 1,749.38 FEET TO AN INTERSECTION WITH THE NORTH-SOUTH QUARTER SECTION LINE OF SAID SECTION 25; THENCE S.00°39'35"E. ALONG SAID NORTH-SOUTH QUARTER SECTION LINE, A DISTANCE OF 3,294.12 FEET; THENCE S.89°12'48"W., A DISTANCE OF 658.70 FEET; THENCE S.00°37'47"E., A DISTANCE OF 1,317.41 FEET; THENCE S.89°18'59"W., A DISTANCE OF 659.17 FEET; THENCE S.00°36'35"E., A DISTANCE OF 658.45 TO AN INTERSECTION WITH THE SOUTH LINE OF SAID SECTION 25; THENCE S.89°21'44"W., ALONG SAID SOUTH LINE A DISTANCE OF 1,319.00 FEET TO THE SOUTHWEST CORNER OF SAID SECTION 25; THENCE N.00°34'07"W., ALONG THE WEST LINE OF THE SOUTHWEST QUARTER OF SAID SECTION 25, A DISTANCE OF 2,629.43 FEET TO THE SOUTHWEST CORNER OF THE NORTHWEST QUARTER OF SAID SECTION 25; THENCE N.00°34'15"W., ALONG THE WEST LINE OF THE NORTHWEST QUARTER OF SAID SECTION 25, A DISTANCE OF 1,758.29 FEET; THENCE N.89°03'20"E., LEAVING SAID WEST LINE A DISTANCE OF 476.46 FEET; THENCE N.00°56'40"W., A DISTANCE OF 115.94 FEET; THENCE N.89°03'20"E., A DISTANCE OF 63.75 FEET; THENCE S.00°56'40"E., A DISTANCE OF 115.94 FEET; THENCE N.89°03'20"E., A DISTANCE OF 447.82 FEET; THENCE N.00°56'40"W., A DISTANCE OF 820.33 FEET; THENCE S.89°03'10"W., A DISTANCE OF 477.27 TO AN INTERSECTION WITH THE SOUTH RIGHT-OF-WAY LINE OF CORKSCREW ROAD AND THE **POINT OF BEGINNING**.

PARCEL CONTAINS 259.24 ACRES, MORE OR LESS.

BEARINGS ARE BASED ON THE WEST LINE OF THE NORTHWEST QUARTER OF SECTION 25, TOWNSHIP 46 SOUTH, RANGE 26 EAST AS BEARING N.00°34'15"W.

DESCRIPTION BASED ON THE EXISTING CONDITIONS MAP AS PREPARED BY AGNOLI, BARBER & BRUNDAGE, INC. HAVING PROJECT NUMBER 7729.

METRON SURVEYING & MAPPING, LLC

 12/28/18

FLORIDA CERTIFICATE OF AUTHORIZATION LB# 7071
DENIS J. O'CONNELL, JR.
PROFESSIONAL SURVEYOR AND MAPPER
FLORIDA CERTIFICATE NO. 5430

SHEET 1 OF 2

10970 S. CLEVELAND AVE., SUITE #605 • FORT MYERS, FLORIDA 33907 • PHONE (239) 275-8575 • FAX (239) 275-8457
www.metronfl.com

RECEIVED
JAN 02 2019

COMMUNITY DEVELOPMENT

CURVE	ARC LENGTH	RADIUS	DELTA ANGLE	CHORD BEARING	CHORD LENGTH
C1	210.75'	1150.00'	10°30'00"	N 83°48'10" E	210.45'

LINE TABLE		
LINE	BEARING	DISTANCE
L1	S00°34'15"E	50.00'

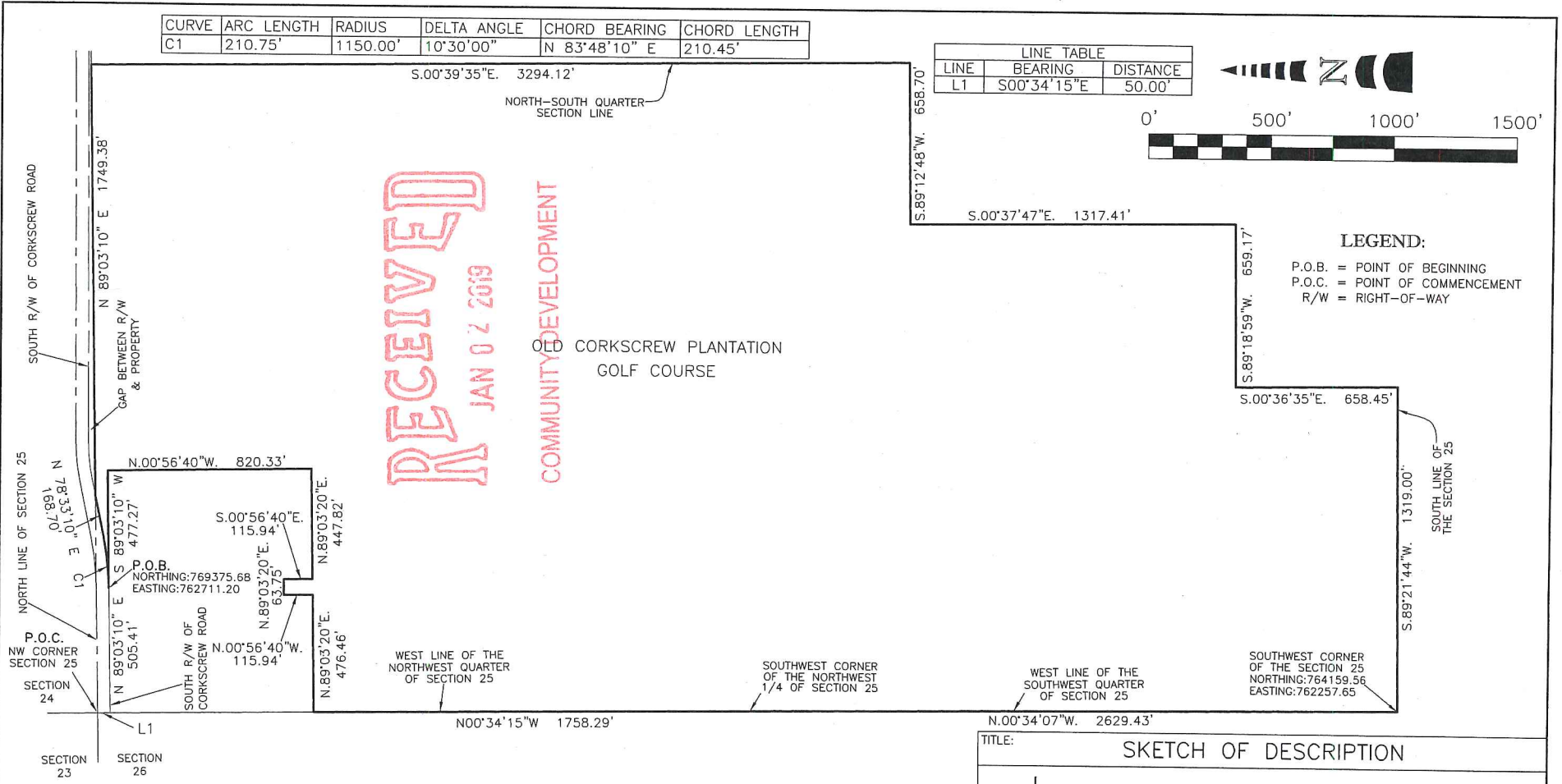


RECEIVED

JAN 02 2019

COMMUNITY DEVELOPMENT

OLD CORKSCREW PLANTATION
GOLF COURSE



LEGEND:

- P.O.B. = POINT OF BEGINNING
- P.O.C. = POINT OF COMMENCEMENT
- R/W = RIGHT-OF-WAY

*** THIS IS NOT A SURVEY ***

*** SEE SHEET 1 OF 2 FOR LEGAL DESCRIPTION ***

NOTE:

THE STATE PLANE COORDINATES SHOWN HEREON ARE IN FEET, FLORIDA WEST ZONE, NORTH AMERICAN DATUM OF 1983 (1990 ADJUSTMENT).

TITLE: SKETCH OF DESCRIPTION			
	METRON	10970 S. CLEVELAND AVENUE SUITE #605 FORT MYERS, FLORIDA 33907	
	SURVEYING & MAPPING	PHONE: (239) 275-8575 FAX: (239) 275-8457	
LAND SURVEYORS-PLANNERS LB# 7071		www.metronfl.com	
FILE NAME: 11625SK Current Overall.dwg	PROJECT NO.: 11625	SHEET: 2 OF 2	
SKETCH DATE: 9-20-2018	DRAWN BY: DJO	SCALE: 1" = 500'	CHECKED BY: TLM (S-T-R)
25-46-26			