

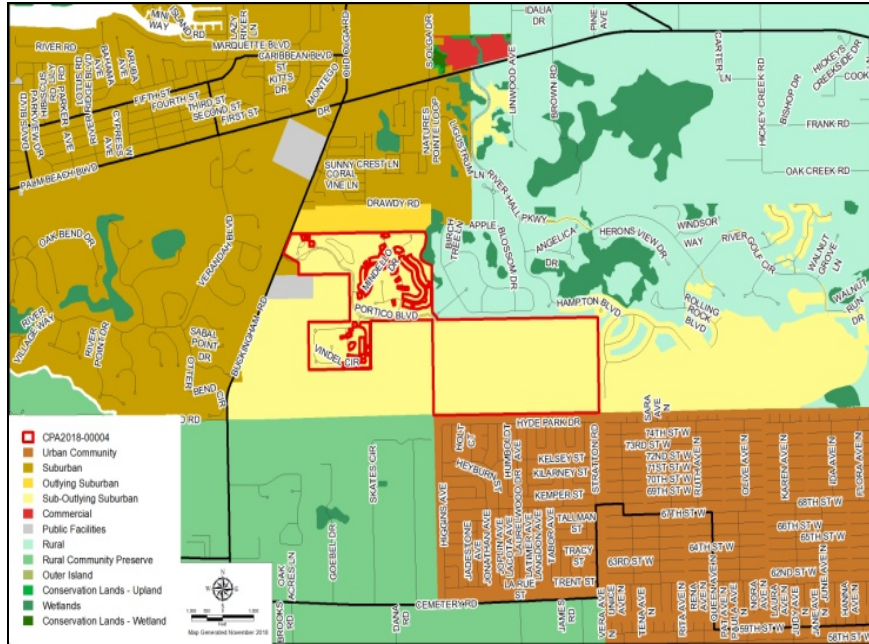
CPA2018-04 PORTICO

Privately Initiated Amendment

Local Planning Agency

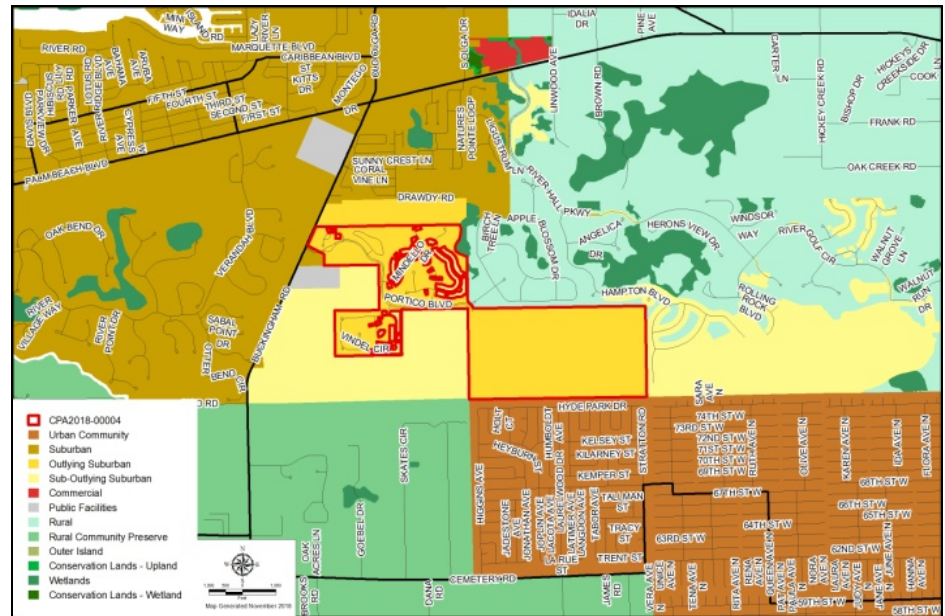
December 17, 2018

Map & Text Amendments:

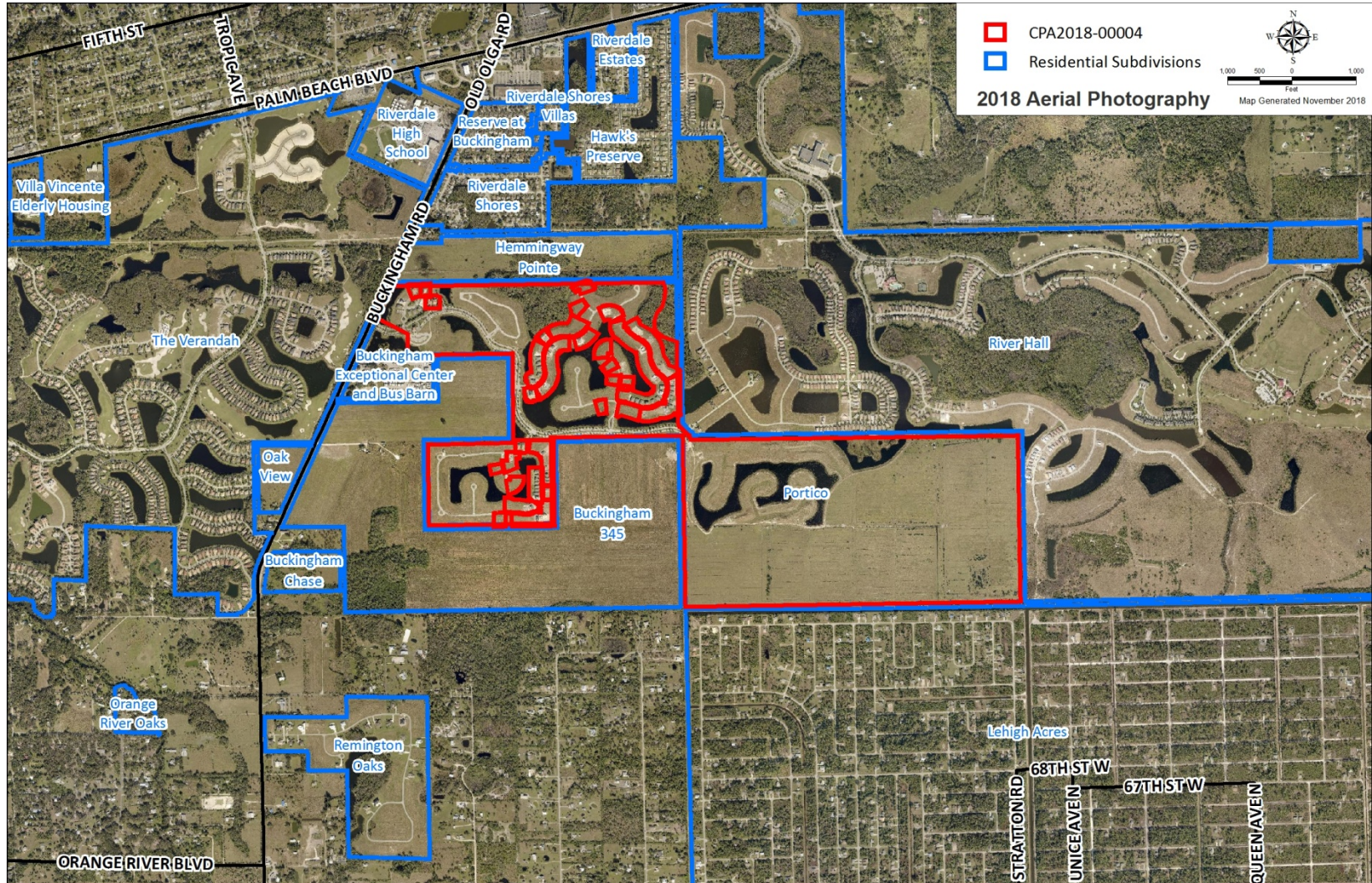


PROPOSED FUTURE LAND USE MAP

EXISTING FUTURE LAND USE MAP



Surrounding Area:



Lee Plan Consistency:

- Compact Development (Objective 2.2)
- Service Availability/ Adequate Public Services (Objective 4.1)
- Protects Residential Uses (Policy 5.1.5)
- No Physical Constraints (Policy 5.1.2)
- Community Planning (17.3.2, 17.3.3, 17.3.4)
- Caloosahatchee Shores (Goal 21)

Staff Recommendation:

- Staff recommends that the BoCC *transmit* the requested amendment to designate the subject property to Outlying Suburban and to update Table 1(b).
- Staff further recommends including the parcels under separate ownership within Portico to create a uniform Future Land Use Map.

Map & Text Amendments:

