



# San Carlos Island

Community Plan

Visioning Workshop

---

Lee County Department of Community Development

# San Carlos Community Plan



# Agenda

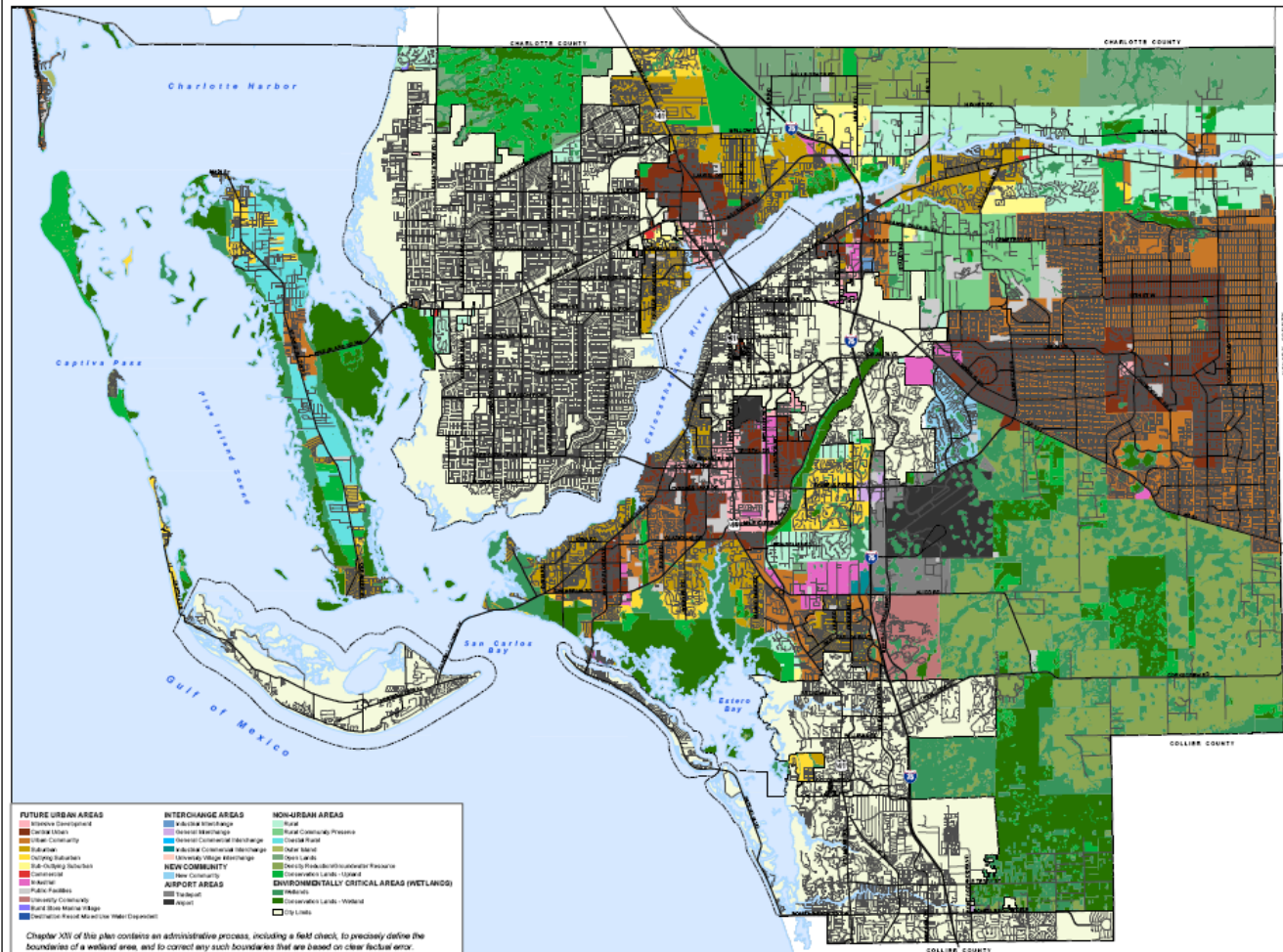
- Brief overview of the Lee Plan, Community Planning, and today's workshop
- Breakout session for guided discussion
- Break
- Groups report findings

# What is the Lee Plan

- The Comprehensive Plan = Lee Plan
- Establishes a vision for Lee County through 2040
- Orderly, sustainable, and context appropriate development
- Formatted into Goals Objectives and Policies



# The Lee Plan



### FUTURE LAND USE MAP

This map is a general representation of the Future Land Use Map as adopted by the Board of County Commissioners on September 17, 2009.

Revised By:

APPLICABLE	APPROVED	DATE	BY
80.01	8/17/09	8/17/09	
80.02	8/17/09	8/17/09	
80.03	8/17/09	8/17/09	
80.04	8/17/09	8/17/09	
80.05	8/17/09	8/17/09	
80.06	8/17/09	8/17/09	
80.07	8/17/09	8/17/09	
80.08	8/17/09	8/17/09	
80.09	8/17/09	8/17/09	
80.10	8/17/09	8/17/09	
80.11	8/17/09	8/17/09	
80.12	8/17/09	8/17/09	
80.13	8/17/09	8/17/09	
80.14	8/17/09	8/17/09	
80.15	8/17/09	8/17/09	
80.16	8/17/09	8/17/09	
80.17	8/17/09	8/17/09	
80.18	8/17/09	8/17/09	
80.19	8/17/09	8/17/09	
80.20	8/17/09	8/17/09	
80.21	8/17/09	8/17/09	
80.22	8/17/09	8/17/09	
80.23	8/17/09	8/17/09	
80.24	8/17/09	8/17/09	
80.25	8/17/09	8/17/09	
80.26	8/17/09	8/17/09	
80.27	8/17/09	8/17/09	
80.28	8/17/09	8/17/09	
80.29	8/17/09	8/17/09	
80.30	8/17/09	8/17/09	
80.31	8/17/09	8/17/09	
80.32	8/17/09	8/17/09	
80.33	8/17/09	8/17/09	
80.34	8/17/09	8/17/09	
80.35	8/17/09	8/17/09	
80.36	8/17/09	8/17/09	
80.37	8/17/09	8/17/09	
80.38	8/17/09	8/17/09	
80.39	8/17/09	8/17/09	
80.40	8/17/09	8/17/09	
80.41	8/17/09	8/17/09	
80.42	8/17/09	8/17/09	
80.43	8/17/09	8/17/09	
80.44	8/17/09	8/17/09	
80.45	8/17/09	8/17/09	
80.46	8/17/09	8/17/09	
80.47	8/17/09	8/17/09	
80.48	8/17/09	8/17/09	
80.49	8/17/09	8/17/09	
80.50	8/17/09	8/17/09	
80.51	8/17/09	8/17/09	
80.52	8/17/09	8/17/09	
80.53	8/17/09	8/17/09	
80.54	8/17/09	8/17/09	
80.55	8/17/09	8/17/09	
80.56	8/17/09	8/17/09	
80.57	8/17/09	8/17/09	
80.58	8/17/09	8/17/09	
80.59	8/17/09	8/17/09	
80.60	8/17/09	8/17/09	
80.61	8/17/09	8/17/09	
80.62	8/17/09	8/17/09	
80.63	8/17/09	8/17/09	
80.64	8/17/09	8/17/09	
80.65	8/17/09	8/17/09	
80.66	8/17/09	8/17/09	
80.67	8/17/09	8/17/09	
80.68	8/17/09	8/17/09	
80.69	8/17/09	8/17/09	
80.70	8/17/09	8/17/09	
80.71	8/17/09	8/17/09	
80.72	8/17/09	8/17/09	
80.73	8/17/09	8/17/09	
80.74	8/17/09	8/17/09	
80.75	8/17/09	8/17/09	
80.76	8/17/09	8/17/09	
80.77	8/17/09	8/17/09	
80.78	8/17/09	8/17/09	
80.79	8/17/09	8/17/09	
80.80	8/17/09	8/17/09	
80.81	8/17/09	8/17/09	
80.82	8/17/09	8/17/09	
80.83	8/17/09	8/17/09	
80.84	8/17/09	8/17/09	
80.85	8/17/09	8/17/09	
80.86	8/17/09	8/17/09	
80.87	8/17/09	8/17/09	
80.88	8/17/09	8/17/09	
80.89	8/17/09	8/17/09	
80.90	8/17/09	8/17/09	
80.91	8/17/09	8/17/09	
80.92	8/17/09	8/17/09	
80.93	8/17/09	8/17/09	
80.94	8/17/09	8/17/09	
80.95	8/17/09	8/17/09	
80.96	8/17/09	8/17/09	
80.97	8/17/09	8/17/09	
80.98	8/17/09	8/17/09	
80.99	8/17/09	8/17/09	
81.00	8/17/09	8/17/09	

Please see the Lee Plan for additional information regarding special districts, annexes, or alterations in applicable jurisdictions of the Lee County map.

The Planning Commission Map and Assessor Allocation Table Map are 100% Title 100 and 100% Title 100. The Lee Plan is the governing document, and the number of governmental units for the year 2010. Assessor Allocation is provided for use in each Planning Commission in incorporated Lee County.

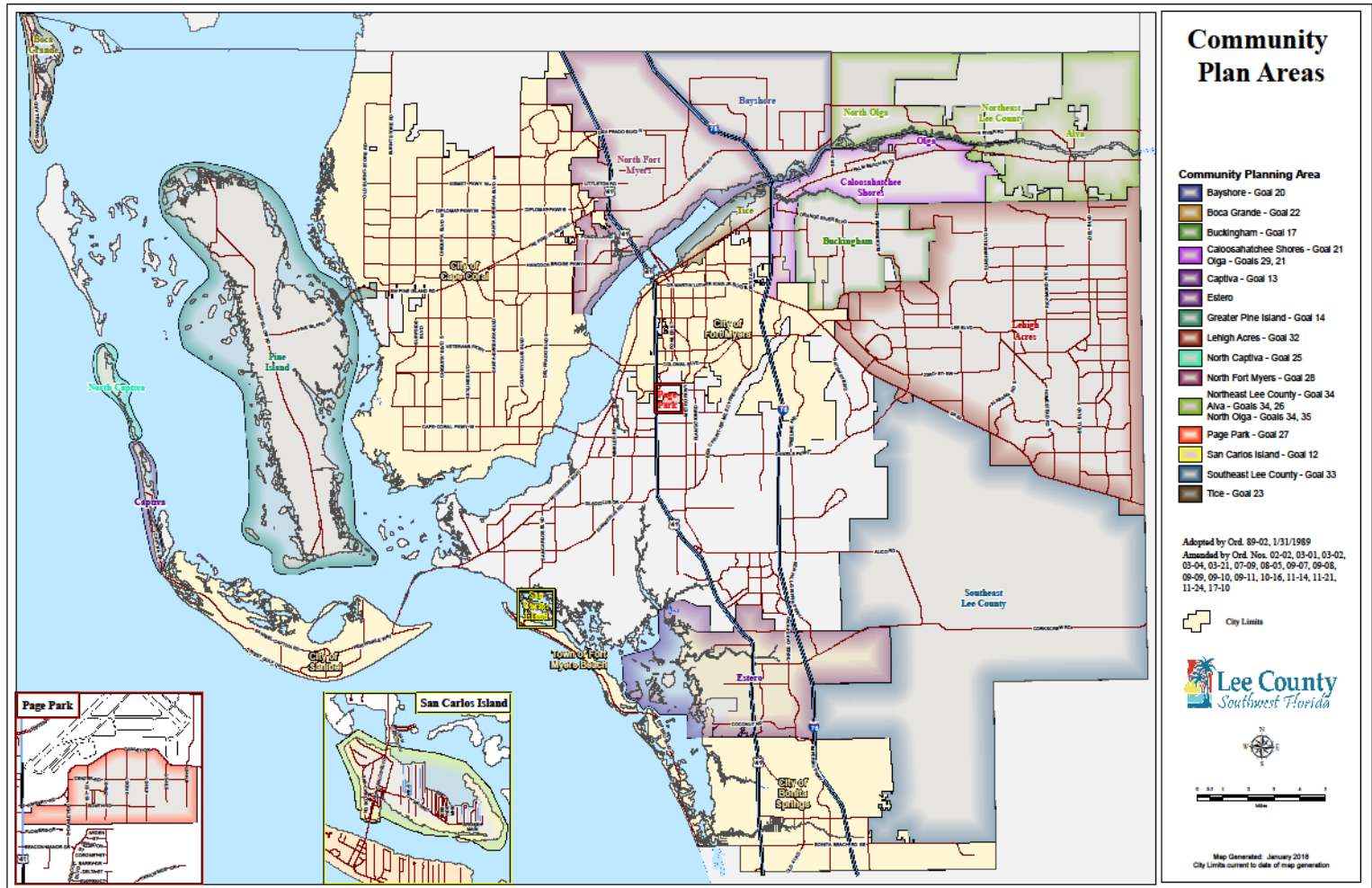
Map Generated: December 2016  
Prepared by: Department of Community Development/DCD

Lee Plan Map 1  
Page 1 of 8

# Community Planning

- Promote a unified approach to address specific conditions unique to a defined area of the county while remaining consistent with the county's overall goals, objectives, and policies
- There are currently 17 Community Planning areas

# Community Planning

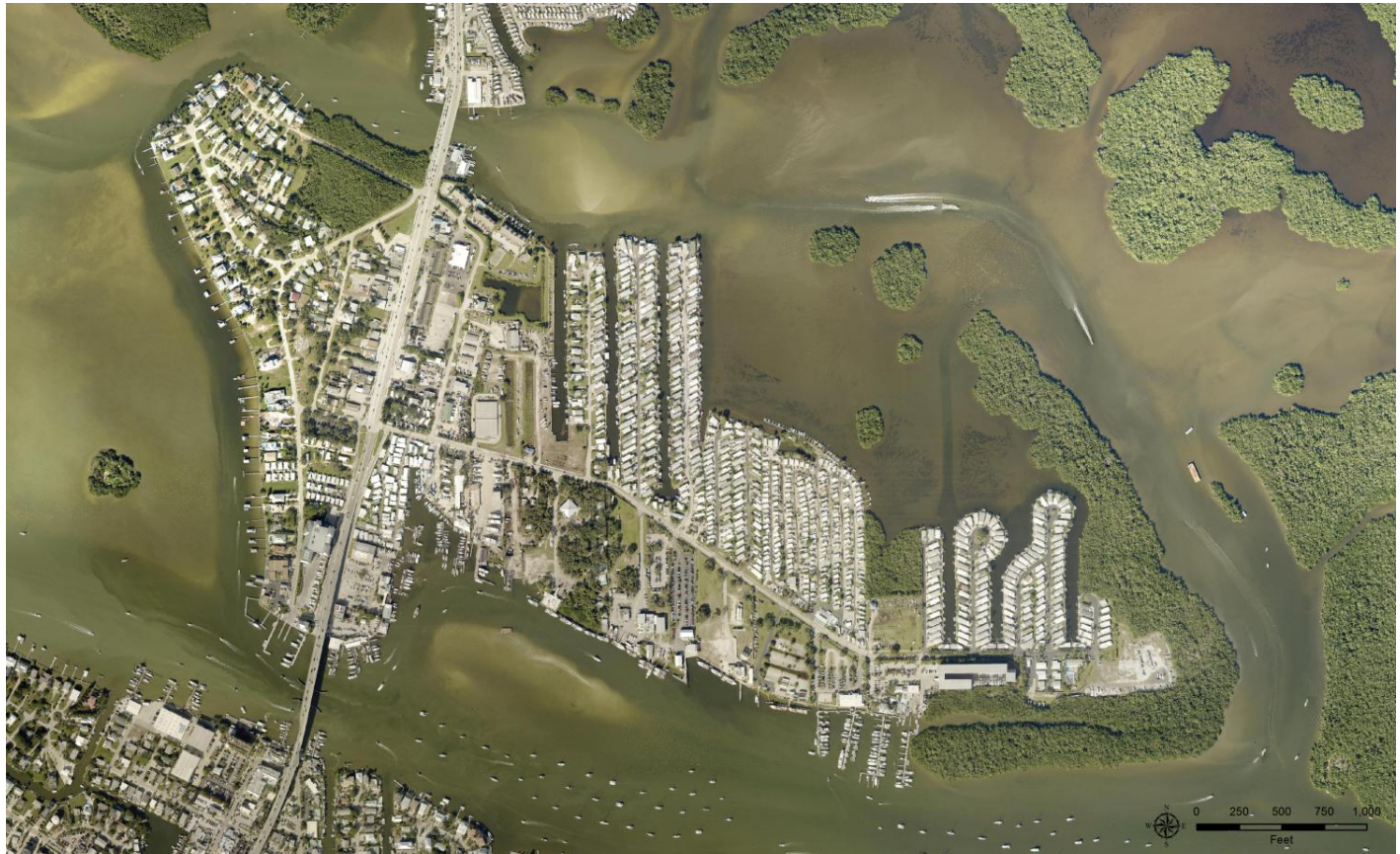


# Objective of Community Visioning

- To obtain community input on how the community should accommodate growth by the year 2040
- Update/clarify/streamline the Lee Plan (Goals, Objectives, and Policies) and the Land Development Code to reflect the vision of the community
- Establish community goals based on community input



# San Carlos Community



# Visioning Workshop

- ❖ Questionnaire

- ❖ Small group discussion based upon questionnaire

- ❖ Comments on map

- ❖ Comments on 'Comments Page'



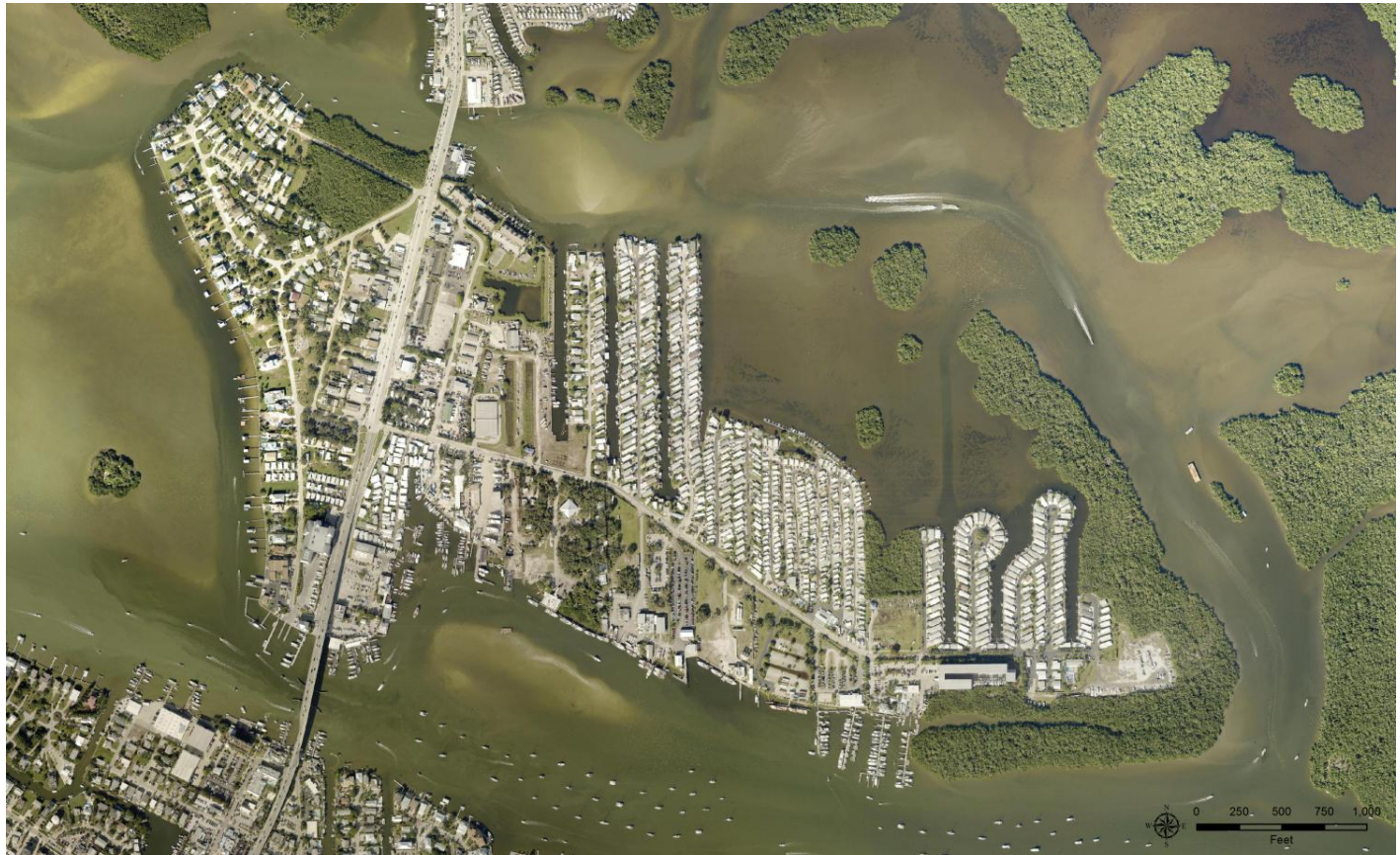
**Any Questions?**

# Time to begin the workshop!

- Brandon Dunn
- Dirk Danley
- Anthony Rodriguez
- Rebecca Sweigert
- Mike Laskowski
- Jessica Leatherman



# San Carlos Community





# The process – what is next for San Carlos Island?

- Staff will use the information today to draft Lee Plan GOP's (Goals, Objectives, Policies), and Land Development Code Regulations
- A second meeting will be scheduled to present the draft community plan to SCI
- Drafts will then be presented at several oversight committees where the public is welcome to comment