

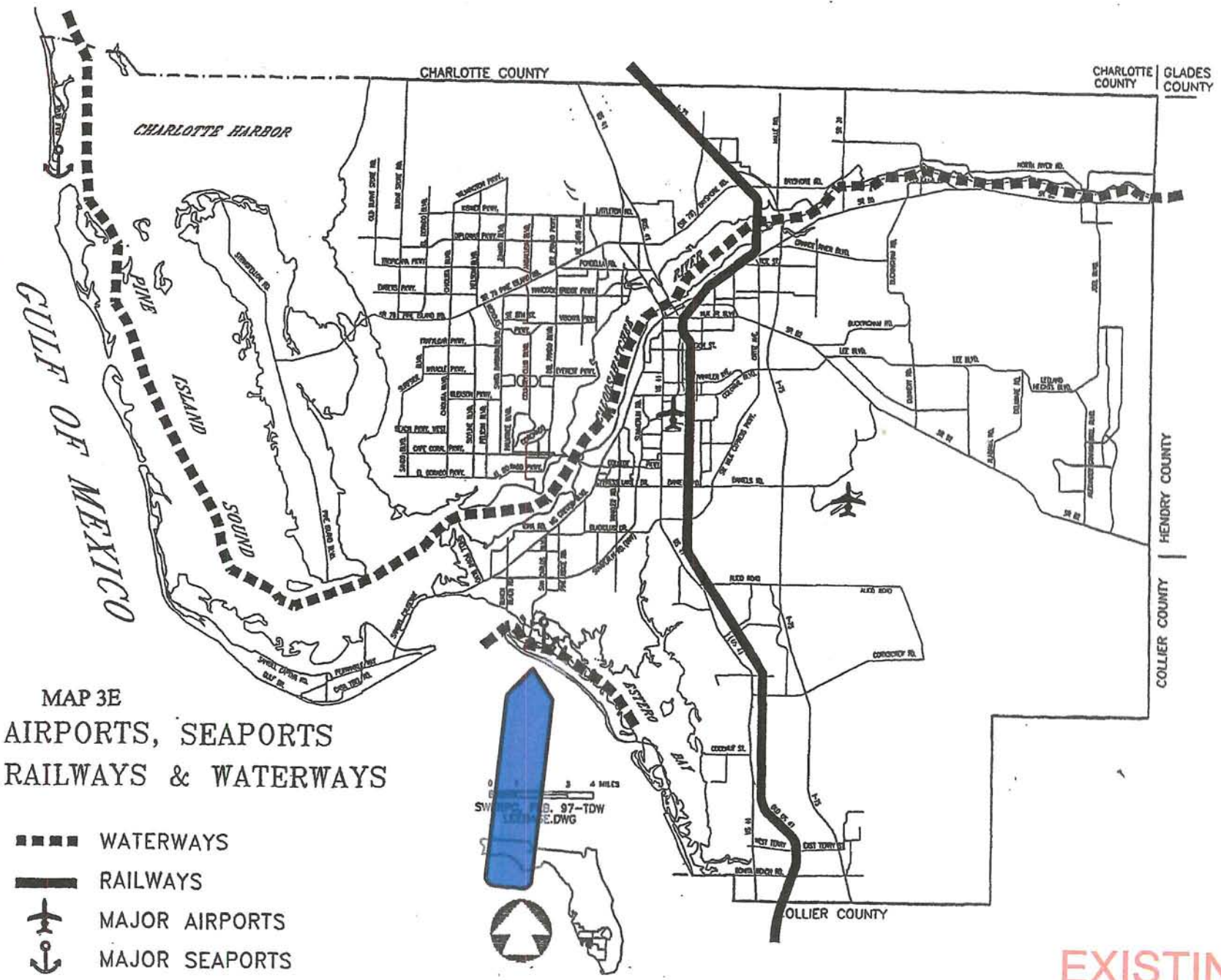


Environmental  
Planning & Consulting

Wetland Management  
Marine Construction & Permitting

**JOANNE E. SEMMER**

1130 Main Street, Fort Myers Beach, FL 33931  
(239) 463-9326 Office • (239) 470-4993 Cell  
(239) 463-0865 Fax • email: [jj37A@yahoo.com](mailto:jj37A@yahoo.com)



MAP 3E  
 AIRPORTS, SEAPORTS  
 RAILWAYS & WATERWAYS

- WATERWAYS
- RAILWAYS
- ✈ MAJOR AIRPORTS
- 🚢 MAJOR SEAPORTS

EXISTING

# AIRPORTS, SEAPORTS, RAILWAYS & WATERWAYS

## LEGEND

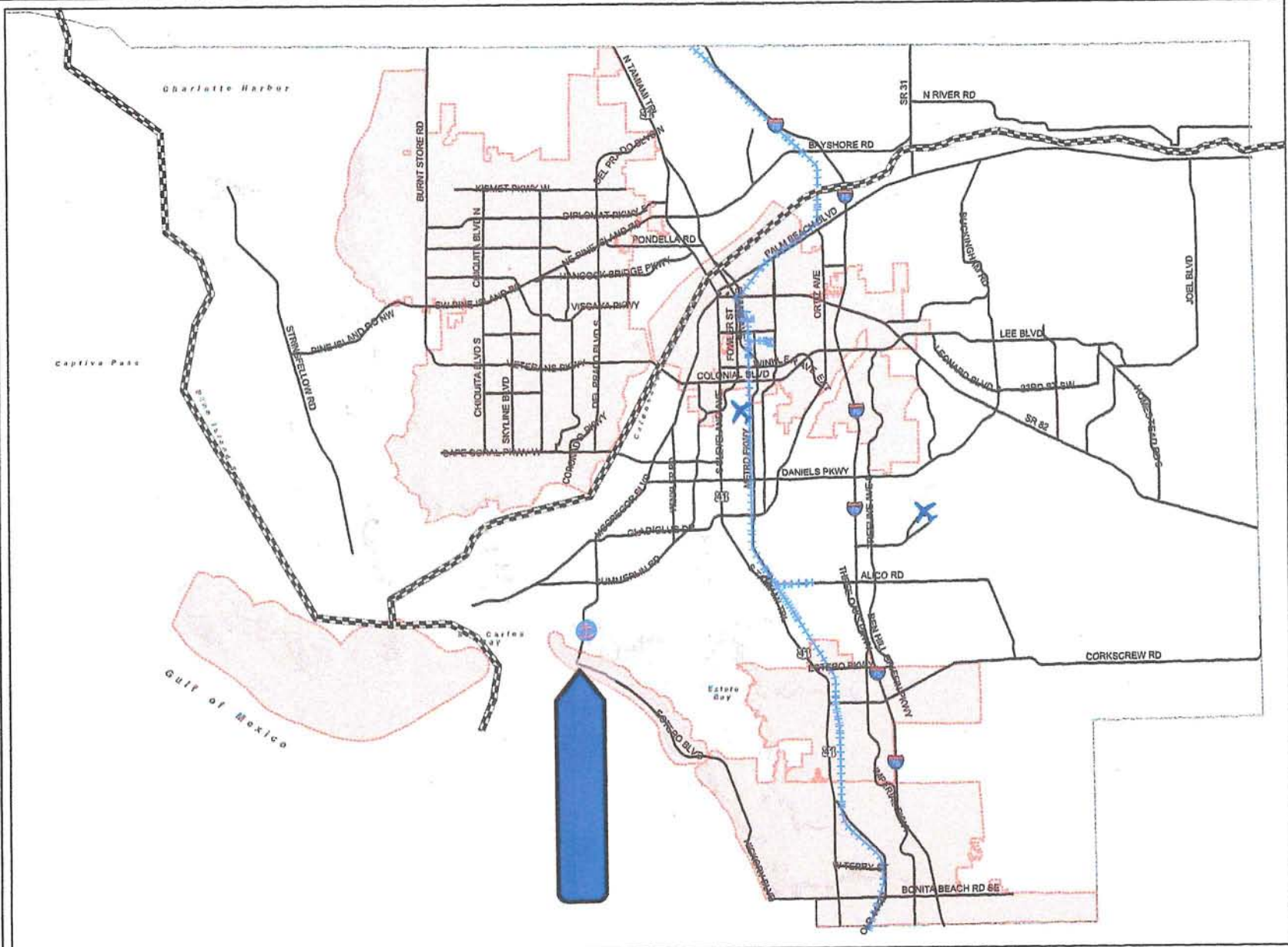
-  MAJOR AIRPORTS
-  MAJOR SEAPORTS
-  WATERWAYS
-  RAILWAYS
-  County Line
-  Major Roads
-  City Limits

PROPOSED

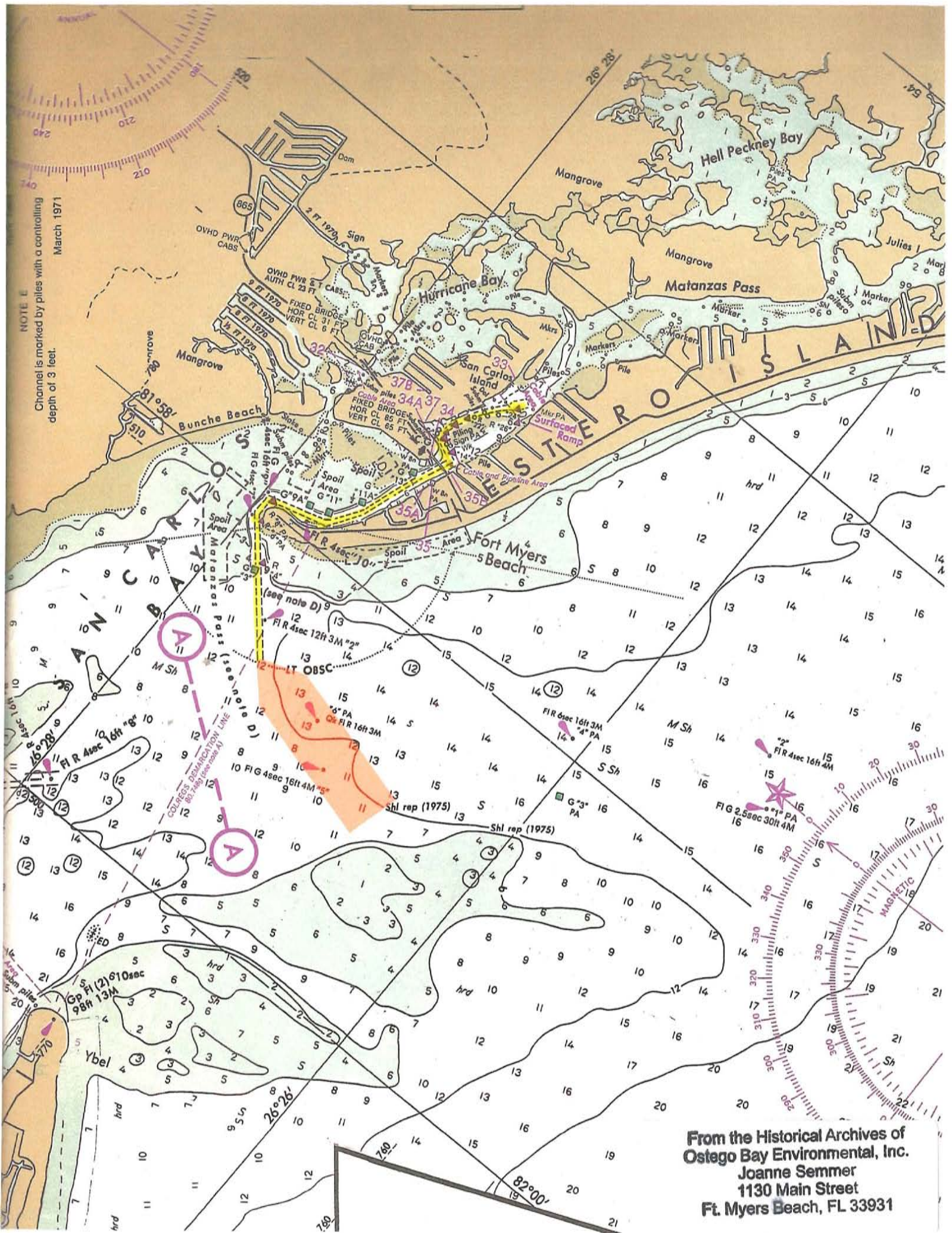


Waterway Source: The National Waterway Network  
 Map Generated: April 2016  
 City Limits current to date of map generation

Lee Plan Map 3E



NOTE 1  
Channel is marked by piles with a controlling  
depth of 3 feet.  
March 1971



From the Historical Archives of  
Ostego Bay Environmental, Inc.  
Joanne Semmer  
1130 Main Street  
Ft. Myers Beach, FL 33931

## Southwest Florida Waterfront Institute Board of Trade

792 Oak Street Fort Myers Beach, Florida 33391

Joanne Semmer, President

(239) 463-9326 fax (239) 463-0865 [jj37a@yahoo.com](mailto:jj37a@yahoo.com)

June 3, 2016

Mr. Peter Blackwell

Mr. Rick Burris

Lee County Department of Community Development

Planning Division

P.O. Box 398

Fort Myers, Florida 33902

RE: CPA2016-00002

After reviewing the County -Initiated Lee Comprehensive Plan Map Amendments, CPA2016-02 I have concerns regarding the proposed AIRPORTS, SEAPORTS, RAILWAYS & WATERWAYS Lee Plan Map 3E.

Staff has removed the Matanzas Pass Federal Channel as a Waterways. It is identified in the existing MAP 3E-Page 1 of 1 but NOT shown on the proposed map Lee Plan Map 3E.

This Federal Channel has been in existence since being dedicated and built in 1960. It has a maintained depth of 12 feet and services the large commercial shrimp and fishing fleet as well as the Key West Ferry, large recreational vessels, tugs, barges and more.

This dedicated shallow draft port is necessary for future service for ferry's, barges, and commercial services to Cuba.

Mr. Burris requested I provide documentation that the Matanzas Pass Federal Channel exists.

**Please find attached:**

1. Department of the Army Jacksonville District, Corps of Engineers Jacksonville, Florida 2001, Fort Myers Beach, Florida / Plans - For FT. MYERS BEACH HARBOR MAINTENACNE DREDGING 11 AND 12-FOOT PROJECT. D.O. File NO. 57-37,833.

2. Fort Myers Beach Bulletin / Fort Myers Beach Observer March 16, 2016 – Matanzas Pass to be dredged this summer. News Paper Article

3. Chart – Cape Sable to Clearwater from Region 8 (Florida West Coast and the Keys). 1988

4. Florida Department of Environmental Protection / Consolidated Joint Coastal Permit and Sovereign Submerged Lands Authorization / Permittee Authorized Entity: U.S. Army Corps of Engineers / Permit / Authorization Number: 0158893-005-JC Project Name: **Matanzas Pass Channel Restoration and Maintenance Dredging**

5. EXECUTIVE OFFICE OF THE PRESIDENT June 12, 1959 – Improvement at Fort Myers Beach, Florida, to provide for a channel 12 feet deep from San Carlos Bay into Matanzas Pass, thence 11 feet deep through Matanzas Pass to the upper shrimp terminals.....

6. RESOLUTON EXPRESSING THE WILLINGNESS AND ABILITY OF LEE COUNTY, FLORIDA, TO MEET THE REQUIRMENTS OF LOCAL COOPERATION FOR THE EXTENSION OF FORT MYERS BEACH CHANNEL. Adopted July 17<sup>th</sup> 1968. Chairman, Board of County Commissioners.


7. Florida Department of Community Development, Waterfront Florida Partnership Program, Community Case Studies. San Carlos Island Community Snapshot.

I have a large amount of additional information from 1950 to the present regarding the Matanzas Pass Federal Channel if needed.

Please reinstate the Matanzas Pass Federal Channel as a Lee County Waterway identified on the proposed Lee County Comprehensive Land Use Plan.

You can reach me at 239- 463-9326 / [jj37a@yahoo.com](mailto:jj37a@yahoo.com) if you need additional information.

Thank You,



Joanne Semmer  
President

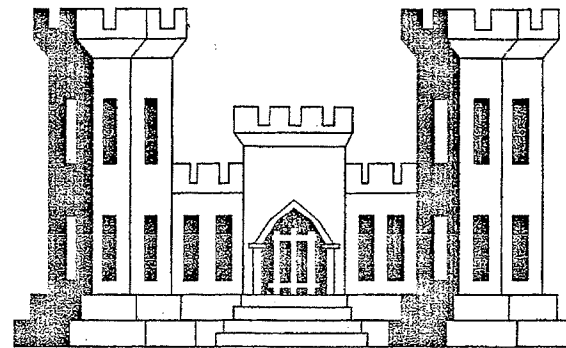
Southwest Florida Waterfront Institute Board of Trade

SAFETY ON THIS JOB  
DEPENDS ON YOU

# FT. MYERS BEACH, FLORIDA

PLANS  
FOR

# FT. MYERS BEACH HARBOR MAINTENANCE DREDGING 11 AND 12-FOOT PROJECT



DEPARTMENT OF THE ARMY  
JACKSONVILLE DISTRICT, CORPS OF ENGINEERS  
JACKSONVILLE, FLORIDA

2001

From the Historical Archives of  
Ostego Bay Environmental, Inc.  
Joanne Semmer  
1130 Main Street  
Ft. Myers Beach, FL 33931

TO ACCOMPANY SOLICITATION

NO. DACW17-01-R-0013

From the Historical Archives of  
Ostego Bay Environmental, Inc.  
Joanne Semmer  
1130 Main Street  
Ft. Myers Beach, FL 33931

VE "INCREASE PROFIT - SUBMIT VECPS"

D. O. FILE NO. 57-37,833

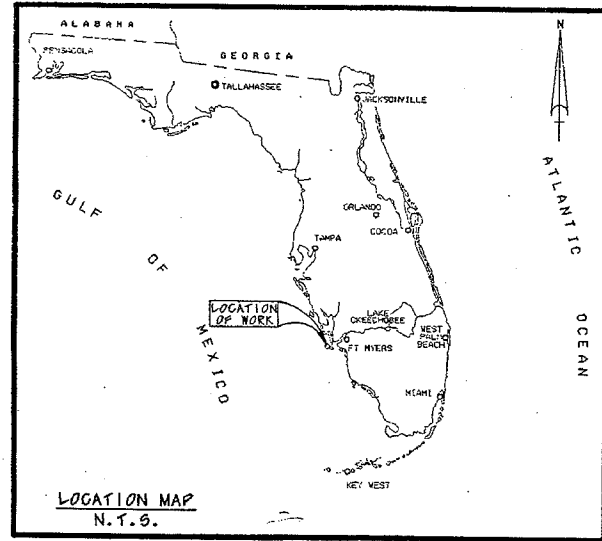
FILE NAME: Ftmy0-Logo

contract\Ftmy0-1.dgn 01/05/01 01:23:15

From the Historical Archives of  
Ostego Bay Environmental, Inc.  
Joanne Semmer  
1130 Main Street  
Ft. Myers Beach, FL 33931







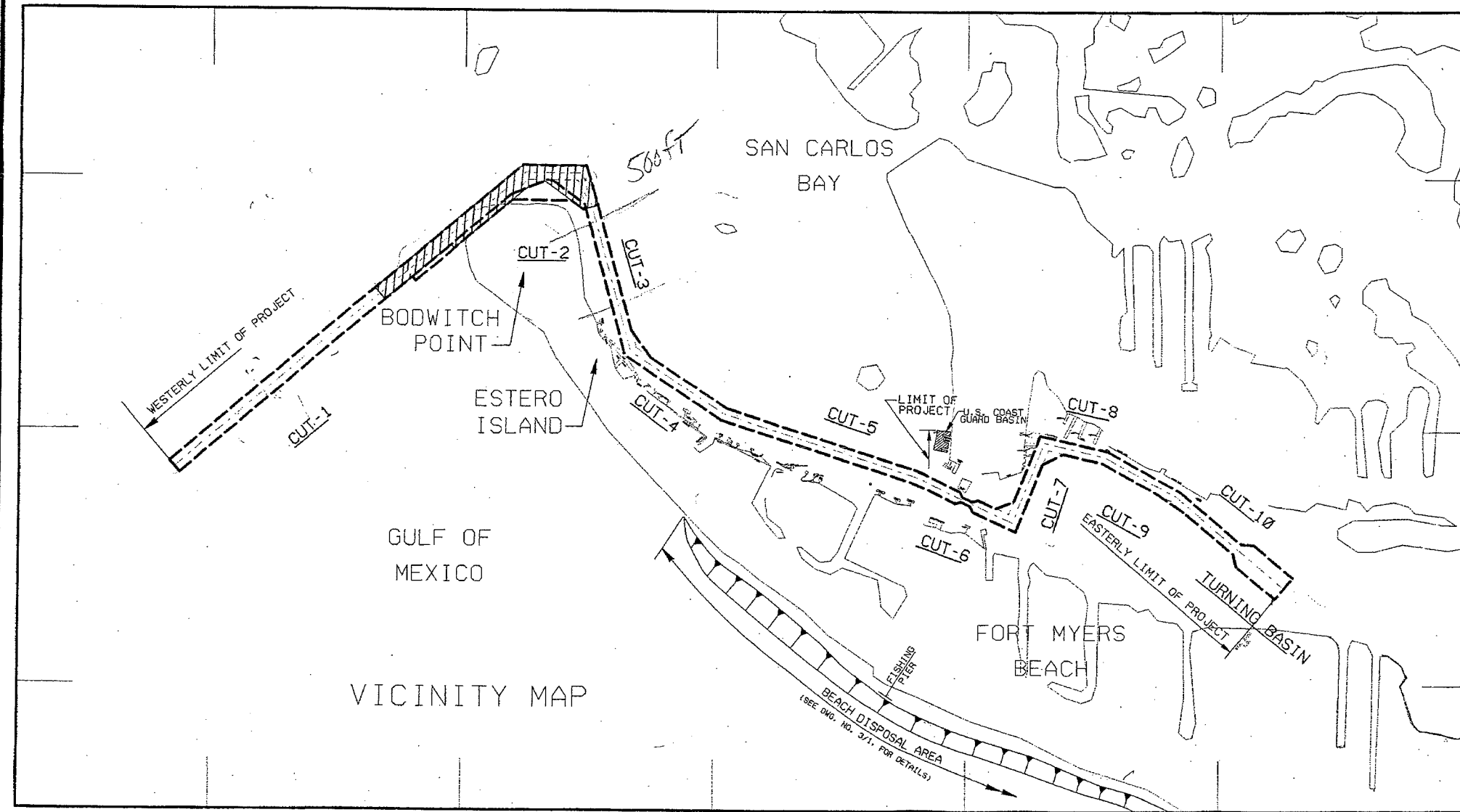
ESTIMATED EXCAVATION QUANTITIES IN CUBIC YARDS			
ACCEPTANCE SECTION	REQUIRED DEPTH * (CY)	ALLOWABLE OVERDEPTH (CY)	TOTAL CUBIC YARDS
①	*89,000	15,000	104,000
②	*55,000	26,000	81,000
③	2,500	300	2,800
TOTAL	146,500	41,300	187,800

\*THE REQUIRED DEPTH QUANTITIES INCLUDE 14,000 CUBIC YARDS OF SHOALING EXPECTED TO OCCUR BETWEEN THE DATES OF THE SURVEY AND THE COMMENCEMENT OF DREDGING.

GENERAL NOTES:

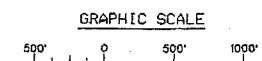
1. NO RAILROAD RIGHTS-OF-WAY SHALL BE ENTERED UPON IN THE PROSECUTION OF ANY AND ALL WORK UNDER THIS CONTRACT WITHOUT THE CONTRACTOR FIRST OBTAINING THE WRITTEN APPROVAL OF A RESPONSIBLE OFFICIAL OF THE RAILROAD AND PRESENTING IT TO THE CONTRACTING OFFICER FOR APPROVAL. PUBLIC RAILROAD CROSSINGS, FREIGHT DEPOTS, ETC., ENTERED FOR THE PURPOSES OF RECEIVING OR SHIPPING GOODS AND MATERIALS OR RAILROAD LANDS WITHIN THE CONSTRUCTION LANDS SHOWN IN THE CONTRACT DRAWINGS, ARE EXEMPT FROM THE FOREGOING PROVISIONS.
2. SEE DWG. NO. 2/1 FOR CHANNEL SURVEY NOTES.
3. SEE DWG. NO. 1/3 FOR CHANNEL CONTROL DATA.
4. SEE DWG. NO. 3/1 FOR BEACH DISPOSAL SURVEY NOTES AND MONUMENT TABULATION.

From the Historical Archives of  
Ostego Bay Environmental, Inc.  
Joanne Semmer  
1130 Main Street  
Ft. Myers Beach, FL 33931



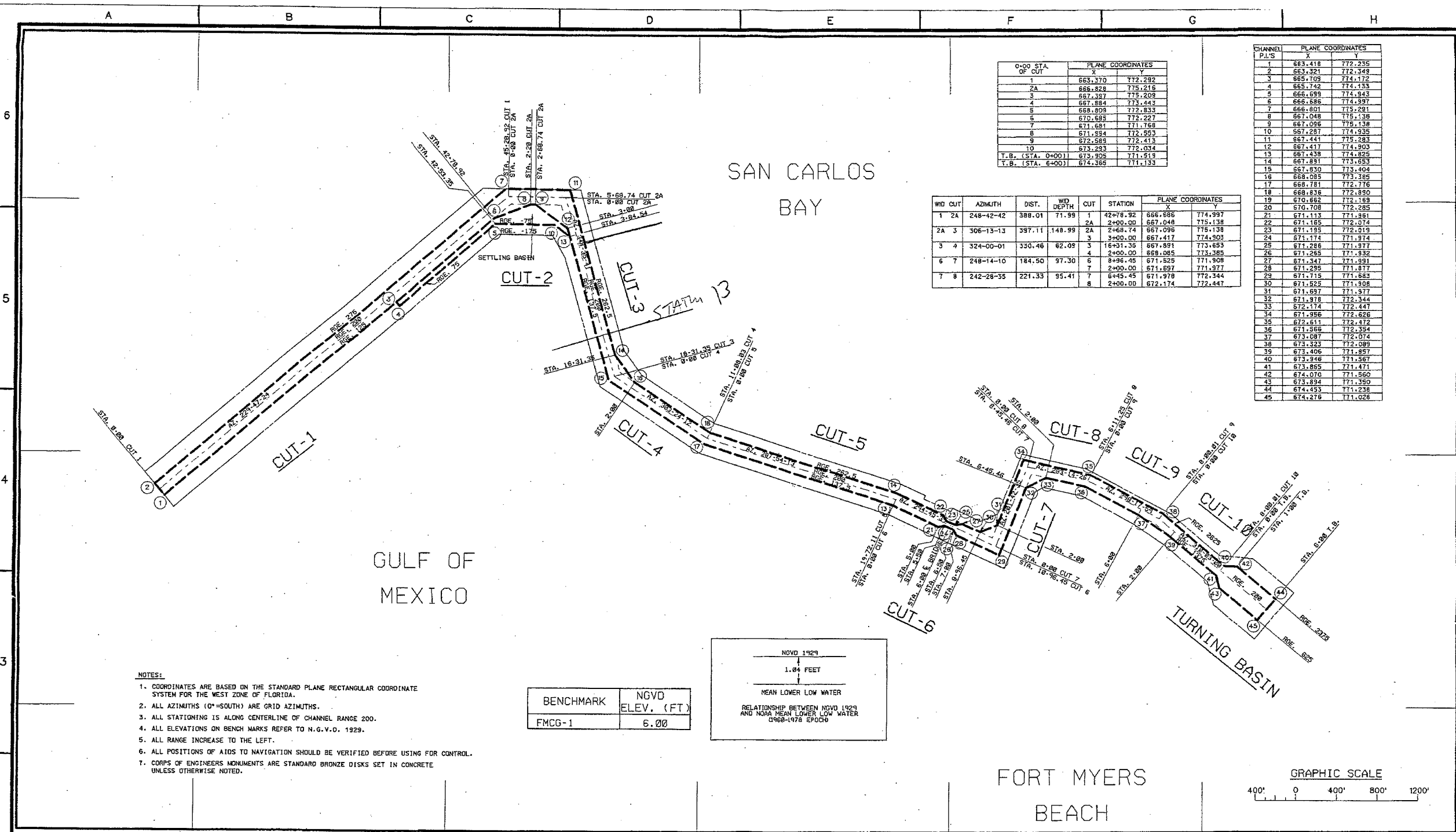
LEGEND:

- ① ACCEPTANCE SECTION
- PROJECT CHANNEL
- ▨ BEACH DISPOSAL AREA
- ▧ BEACH DISPOSAL FILL SECTION
- 24.5 ELEVATION AND LOCATION
- ▨ AREAS TO BE DREDGED
- CB-KBM98-1 CORE BORING DESIGNATION AND LOCATION
- ★ AIDS TO NAVIGATION
- GRASS BEDS



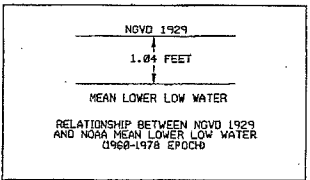
US Army Corps of Engineers Jacksonville District SAFETY ON THIS JOB DEPENDS ON YOU	
DEPARTMENT OF THE ARMY JACKSONVILLE DISTRICT, CORPS OF ENGINEERS JACKSONVILLE, FLORIDA	No. Sheet Zone
Designed by: [ ] Checked by: [ ] Drawn by: [ ] Title: [ ]	Date: MAY 1999 D.O. FILE NO. 57-37.833
FORT MYERS BEACH HARBOR, FLORIDA MAINTENANCE DREDGING 11 AND 12 FOOT PROJECT LOCATION, VICINITY MAP, LEGEND AND GENERAL NOTES	DRAWING NO. 1/2

From the Historical Archives of  
Ostego Bay Environmental, Inc.  
Joanne Semmer  
1130 Main Street  
Ft. Myers Beach, FL 33931



- NOTES:**
- COORDINATES ARE BASED ON THE STANDARD PLANE RECTANGULAR COORDINATE SYSTEM FOR THE WEST ZONE OF FLORIDA.
  - ALL AZIMUTHS (0°=SOUTH) ARE GRID AZIMUTHS.
  - ALL STATIONING IS ALONG CENTERLINE OF CHANNEL RANGE 200.
  - ALL ELEVATIONS ON BENCH MARKS REFER TO N.G.V.D. 1929.
  - ALL RANGE INCREASE TO THE LEFT.
  - ALL POSITIONS OF AIDS TO NAVIGATION SHOULD BE VERIFIED BEFORE USING FOR CONTROL.
  - CORPS OF ENGINEERS MONUMENTS ARE STANDARD BRONZE DISKS SET IN CONCRETE UNLESS OTHERWISE NOTED.

BENCHMARK	NGVD ELEV. (FT.)
FMCG-1	6.00



0+00 STA. OF CUT	PLANE COORDINATES	
	X	Y
1	663.270	772.282
2A	667.327	775.216
3	667.327	775.208
4	667.884	773.443
5	668.809	772.833
6	670.695	772.227
7	671.681	771.168
8	671.594	772.593
9	672.589	772.413
10	673.283	772.034
T.B. (STA. 0+00)	673.209	771.819
T.B. (STA. 6+00)	674.365	771.133

WID CUT	AZIMUTH	DIST.	WID DEPTH	CUT	STATION	PLANE COORDINATES	
						X	Y
1 2A	248-42-42	388.01	71.99	1	42+76.92	666.686	774.997
				2A	2+00.00	667.048	775.138
2A 3	306-13-13	397.11	148.99	2A	2+68.74	667.096	775.138
				3	3+00.00	667.417	774.503
3 4	324-00-01	330.46	62.09	3	16+31.35	667.891	773.653
				4	2+00.00	668.095	773.285
6 7	248-14-10	184.50	97.30	6	8+96.45	671.525	771.908
				7	2+00.00	671.697	771.977
7 8	242-28-35	221.33	95.41	7	6+45.45	671.978	772.344
				8	2+00.00	672.174	772.447

CHANNEL P.I.'S	PLANE COORDINATES	
	X	Y
1	663.418	772.235
2	663.321	772.349
3	665.109	774.172
4	665.742	774.133
5	666.699	774.943
6	666.686	774.997
7	666.801	775.281
8	667.048	775.138
9	667.096	775.138
10	667.287	774.935
11	667.441	775.283
12	667.411	774.903
13	667.438	774.825
14	667.891	773.653
15	667.830	773.404
16	668.095	773.285
17	668.181	772.176
18	668.836	772.890
19	670.682	772.189
20	670.708	772.285
21	671.113	771.951
22	671.185	772.074
23	671.195	772.019
24	671.174	771.974
25	671.288	771.977
26	671.255	771.932
27	671.347	771.991
28	671.295	771.877
29	671.715	771.683
30	671.522	771.908
31	671.697	771.977
32	671.978	772.344
33	672.174	772.447
34	671.956	772.626
35	672.611	772.472
36	671.566	772.354
37	673.087	772.074
38	673.323	772.089
39	673.406	771.857
40	673.916	771.567
41	673.855	771.471
42	674.070	771.560
43	673.894	771.390
44	674.453	771.238
45	674.276	771.628

- NOTES:**
- SEE DWG. NO. 1/2 FOR LOCATION, VICINITY MAP, LEGEND, AND GENERAL NOTES.
  - SEE DWG. NO. 1/3 FOR CONTROL DATA.
  - SEE DWG. NO. 2/1 FOR CHANNEL SURVEY NOTES.
  - SEE DWG. NO. 3/1 FOR BEACH DISPOSAL SURVEY NOTES.

US Army Corps of Engineers  
Jacksonville District

SAFETY ON THIS JOB DEPENDS ON YOU

---

DEPARTMENT OF THE ARMY  
CORPS OF ENGINEERS  
JACKSONVILLE, FLORIDA

---

FORT MYERS BEACH HARBOR, FLORIDA  
MAINTENANCE DREDGING  
11 AND 12 FOOT PROJECT

---

CONTROL DATA

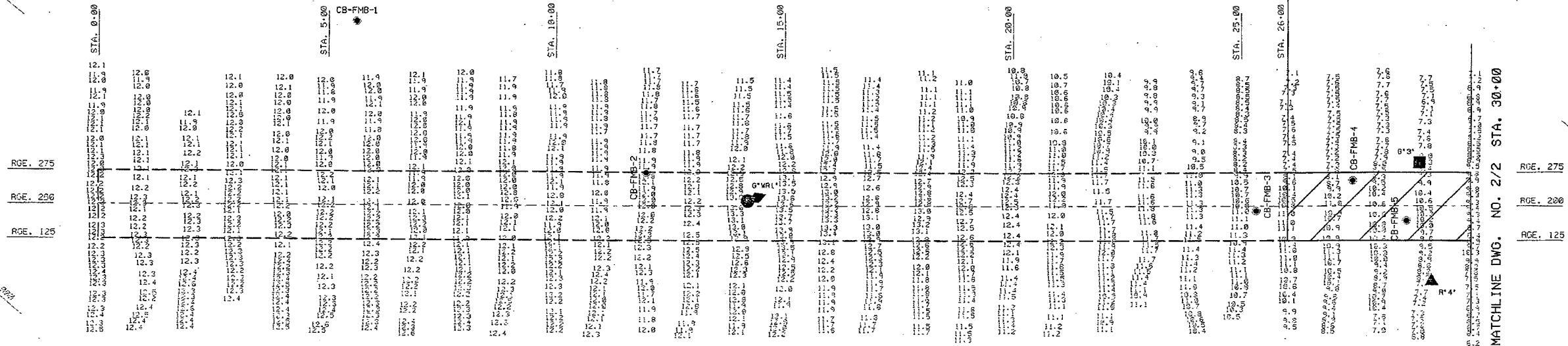
---

DRAWING NO.  
**1/3**

From the Historical Archives of  
 Ostego Bay Environmental, Inc.  
 Joanne Semmer  
 1130 Main Street  
 Ft. Myers Beach, FL 33931

CHANNEL SURVEY NOTES:

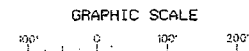
- REFER TO SURVEY NO. 00-233.
- SOUNDINGS ARE IN FEET AND TENTHS AND REFER TO MEAN LOWER LOW WATER (MLLW) WHICH IS 1.04 FEET BELOW NGVD 1929.
- ALL ELEVATIONS ARE BELOW THE CHART DATUM UNLESS PRECEDED BY A (-) SIGN.
- TIDAL REDUCTIONS WERE MADE FROM A STAFF SET ON A WOODEN PILING OF DOCK, AND REFERENCED FROM BENCHMARK "FMCG-1".
- PLANE COORDINATES ARE BASED ON THE TRANSVERSE MERCATOR PROJECTION FOR THE WEST ZONE OF FLORIDA AND REFERENCED TO NORTH AMERICAN DATUM OF 1983 (NAD83).
- ALL AZIMUTHS ARE GRID; RECKONED CLOCKWISE FROM SOUTH.
- ALL STATIONING REFERS TO THE CENTERLINE OF THE CHANNEL.
- SURVEY WAS PERFORMED USING DIFFERENTIAL GPS FOR POSITIONING AND UTILIZING THE USCG NAVBEACON SYSTEM AS THE REFERENCE SITE. VERTICAL MEASUREMENTS WERE MADE USING AN INERSPACE MODEL 448 FATHOMETER WITH A 200KHZ (HIGH FREQUENCY) TRANSDUCER.
- | VESSEL | DATE OF SURVEY | CUT                 |
|--------|----------------|---------------------|
| VB-34  | 09 DEC 1999    | 1, 2A, 3, 4, 5      |
| VB-34  | 14 DEC 1999    | 6-10- TURNING BASIN |
- AIDS TO NAVIGATION WERE LOCATED DURING THIS SURVEY.
- THE INFORMATION DEPICTED ON THIS MAP REPRESENTS THE RESULTS OF SURVEYS MADE ON THE DATES INDICATED ABOVE AND CAN ONLY BE CONSIDERED AS INDICATING THE GENERAL CONDITIONS AT THAT TIME.
- SURVEY QUALITY CONTROL STANDARDS AND FIELD EQUIPMENT CALIBRATIONS WERE FOLLOWED DURING THIS SURVEY IN ACCORDANCE WITH EN 1110-2-1003 FOR CLASS 1 HYDROGRAPHIC SURVEYS.



AIDS TO NAVIGATION	PLANE COORDINATES	
	X	Y
LT. BUOY-WR1 (12/99)	664.446	773.217
DSN-3 (12/99)	665.514	774.225
DSN-4 (12/99)	665.702	774.043

CUT-1  
AZ-229-47-24

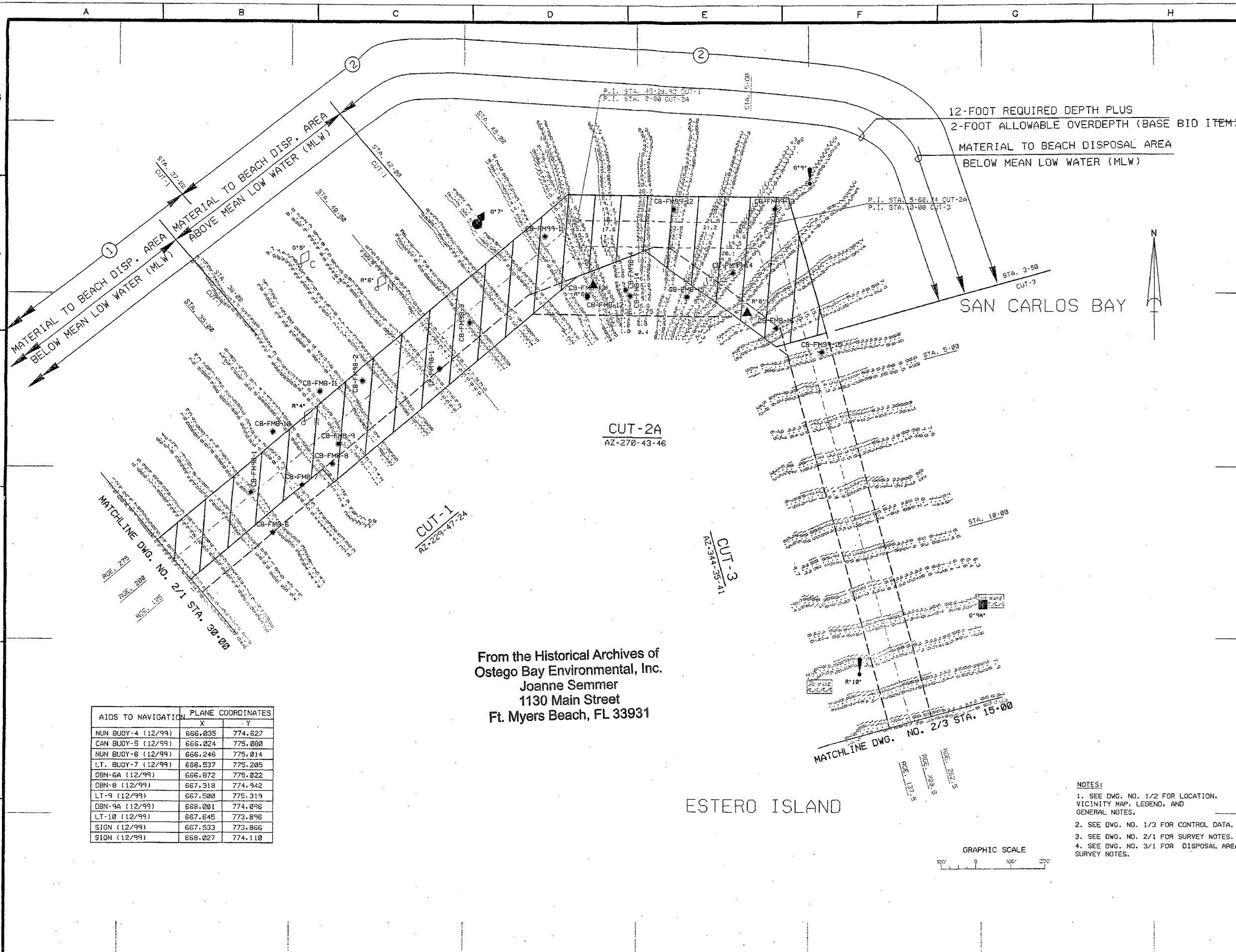
From the Historical Archives of  
Ostego Bay Environmental, Inc.  
Joanne Semmer  
1130 Main Street  
Ft. Myers Beach, FL 33931



- NOTES:
- SEE DWG. NO. 1/2 FOR LOCATION, VICINITY MAP, LEGEND, AND GENERAL NOTES.
  - SEE DWG. NO. 1/3 FOR CONTROL DATA.
  - SEE DWG. NO. 2/1 FOR SURVEY NOTES.
  - SEE DWG. NO. 3/1 FOR DISPOSAL AREA SURVEY NOTES.

 US Army Corps of Engineers Jacksonville District SAFETY ON THIS JOB DEPENDS ON YOU	
DEPARTMENT OF THE ARMY JACKSONVILLE DISTRICT, CORPS OF ENGINEERS JACKSONVILLE, FLORIDA	DREDGING PLAN DRAWING NO. <b>2/1</b>
FORT MYERS BEACH HARBOR, FLORIDA MAINTENANCE DREDGING 11 AND 12 FOOT PROJECT	D.O. FILE NO. 57-37, 833

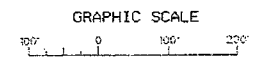
From the Historical Archives of  
Ostego Bay Environmental, Inc.  
Joanne Semmer  
1130 Main Street  
Ft. Myers Beach, FL 33931



AIDS TO NAVIGATION	PLANE COORDINATES	
	X	Y
NUN BUOY-4 (12/99)	666,035	774,627
CAN BUOY-5 (12/99)	666,024	775,080
NUN BUOY-6 (12/99)	666,246	775,014
LT. BUOY-7 (12/99)	666,537	775,205
DBN-6A (12/99)	666,872	775,022
DBN-8 (12/99)	667,318	774,942
LT-9 (12/99)	667,500	775,319
DBN-9A (12/99)	668,001	774,096
LT-10 (12/99)	667,645	773,896
SIGN (12/99)	667,533	773,866
SIGN (12/99)	668,027	774,110

From the Historical Archives of  
 Ostego Bay Environmental, Inc.  
 Joanne Semmer  
 1130 Main Street  
 Ft. Myers Beach, FL 33931

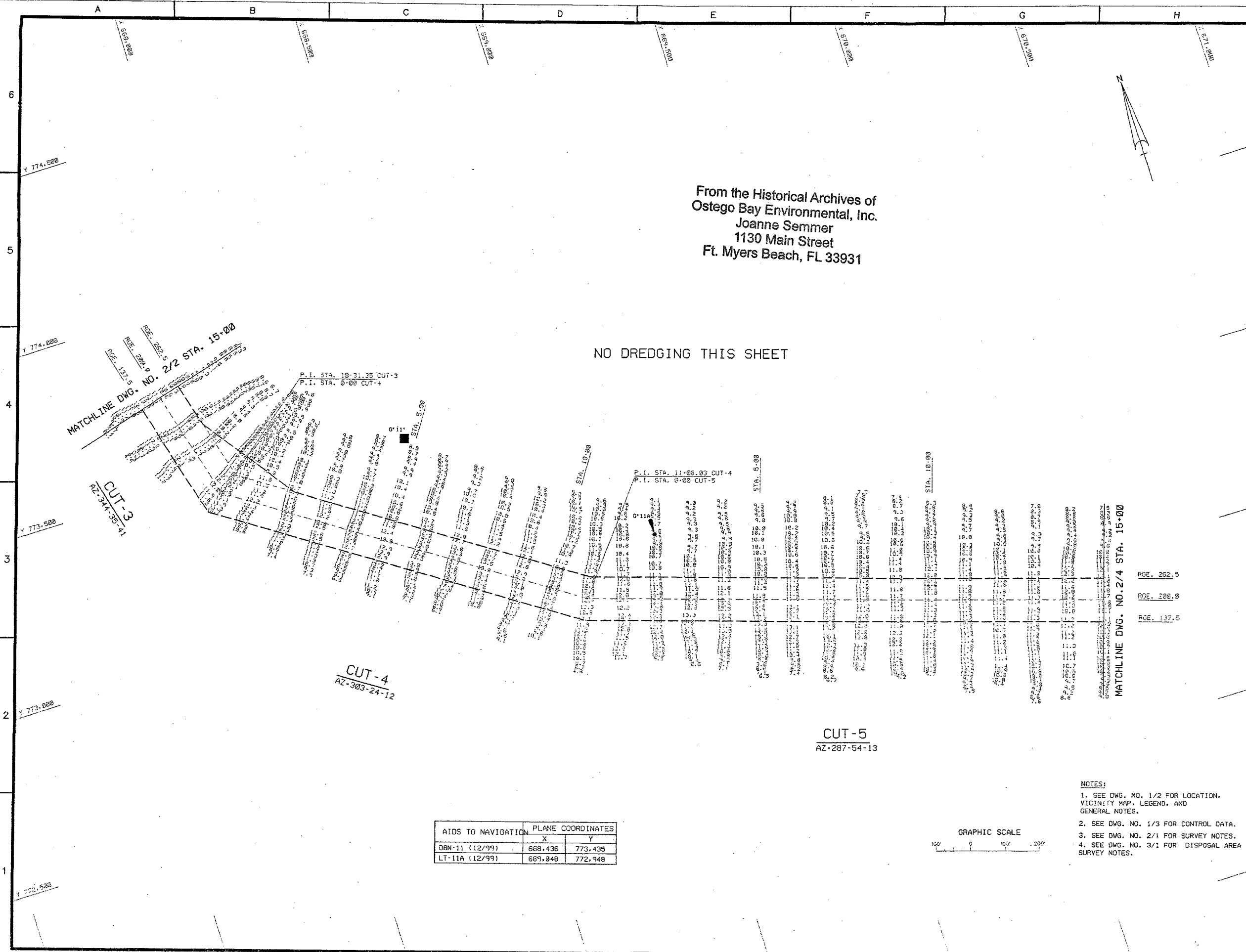
ESTERO ISLAND



- NOTES:
1. SEE DWG. NO. 1/2 FOR LOCATION, VICINITY MAP, LEGEND, AND GENERAL NOTES.
  2. SEE DWG. NO. 1/3 FOR CONTROL DATA.
  3. SEE DWG. NO. 2/1 FOR SURVEY NOTES.
  4. SEE DWG. NO. 3/1 FOR DISPOSAL AREA SURVEY NOTES.

US Army Corps of Engineers Jacksonville District SAFETY ON THIS JOB DEPENDS ON YOU	
DEPARTMENT OF THE ARMY JACKSONVILLE DISTRICT CORPS OF ENGINEERS JACKSONVILLE, FLORIDA	No. Symbol Zone _____ _____ _____
Prepared by: LRP Date: _____ Drawn by: LRP Date: _____ Checked by: LRP Date: _____ Scale: AS SHOWN Plot scale: _____ Date: MAY 1999 D.O. FILE NO. 57-37, 833	FORT MYERS BEACH HARBOR, FLORIDA MAINTENANCE DREDGING 11 AND 12 FOOT PROJECT DREDGING PLAN
DRAWING NO. <b>2/2</b>	

From the Historical Archives of  
 Ostego Bay Environmental, Inc.  
 Joanne Semmer  
 1130 Main Street  
 Ft. Myers Beach, FL 33931



From the Historical Archives of  
 Ostego Bay Environmental, Inc.  
 Joanne Semmer  
 1130 Main Street  
 Ft. Myers Beach, FL 33931

NO DREDGING THIS SHEET

MATCHLINE DWG. NO. 2/4 STA. 15+00  
 RGE. 262.5  
 RFE. 200.0  
 RFE. 137.5

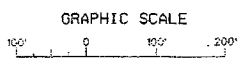
CUT-3  
 AZ-344-35-41

CUT-4  
 AZ-303-24-12

CUT-5  
 AZ-287-54-13

MATCHLINE DWG. NO. 2/4 STA. 15+00  
 RGE. 262.5  
 RFE. 200.0  
 RFE. 137.5

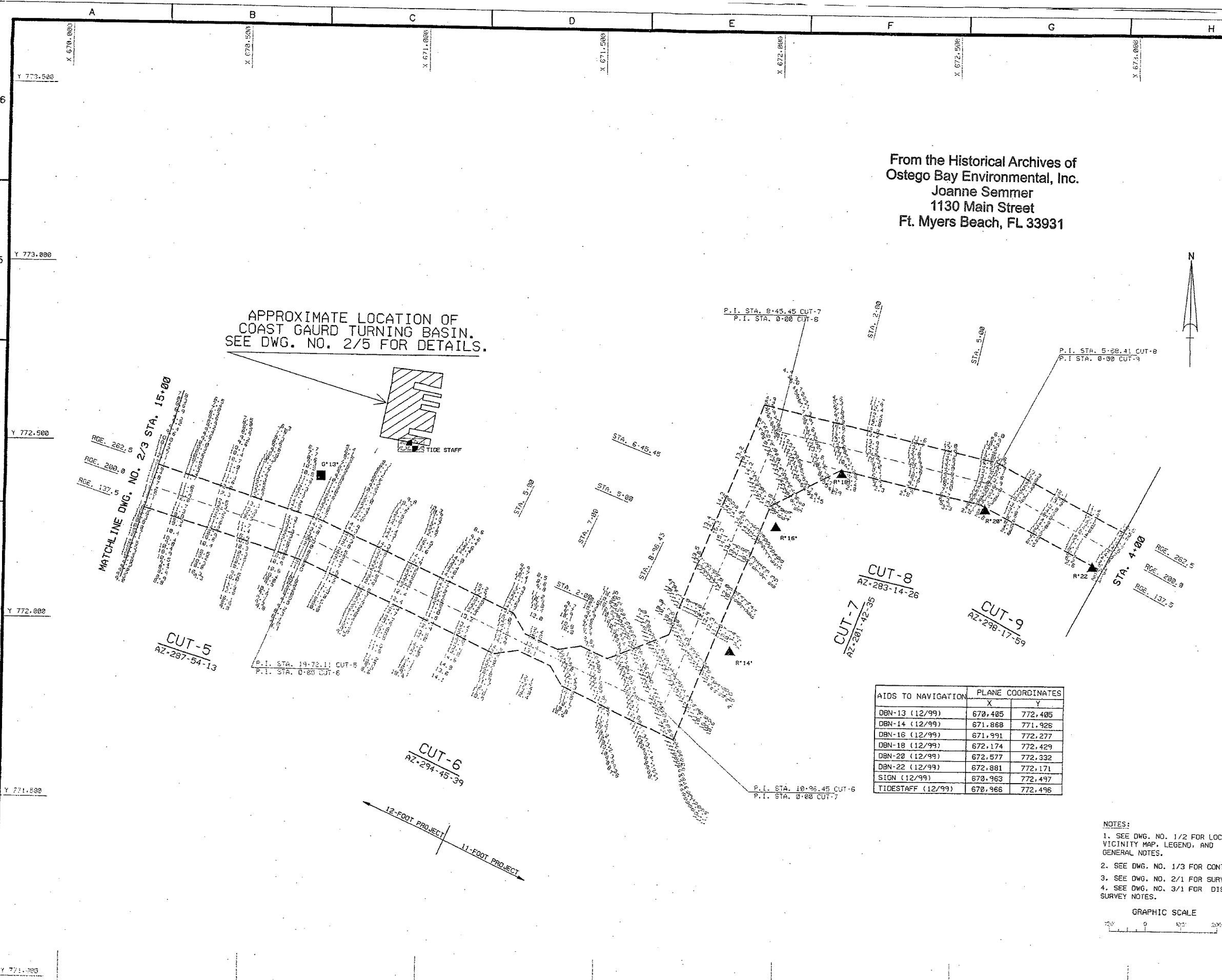
AIDS TO NAVIGATION	PLANE COORDINATES	
	X	Y
DBN-11 (12/99)	668,436	773,435
LT-11A (12/99)	669,048	772,948



- NOTES:
1. SEE DWG. NO. 1/2 FOR LOCATION, VICINITY MAP, LEGEND, AND GENERAL NOTES.
  2. SEE DWG. NO. 1/3 FOR CONTROL DATA.
  3. SEE DWG. NO. 2/1 FOR SURVEY NOTES.
  4. SEE DWG. NO. 3/1 FOR DISPOSAL AREA SURVEY NOTES.

 US Army Corps of Engineers Jacksonville District SAFETY ON THIS JOB DEPENDS ON YOU	
DEPARTMENT OF THE ARMY JACKSONVILLE DISTRICT OF ENGINEERS JACKSONVILLE, FLORIDA	No. Symbol Zone Description
File Name: F:\MAY2-3.DGN Reference files: BR0808.DGN, FTACN03.DGN, FTACN04.DGN, FTACN05.DGN, FTACN06.DGN, FTACN07.DGN, FTACN08.DGN, FTACN09.DGN, FTACN10.DGN, FTACN11.DGN, FTACN12.DGN, FTACN13.DGN, FTACN14.DGN, FTACN15.DGN, FTACN16.DGN, FTACN17.DGN, FTACN18.DGN, FTACN19.DGN, FTACN20.DGN, FTACN21.DGN, FTACN22.DGN, FTACN23.DGN, FTACN24.DGN, FTACN25.DGN, FTACN26.DGN, FTACN27.DGN, FTACN28.DGN, FTACN29.DGN, FTACN30.DGN, FTACN31.DGN, FTACN32.DGN, FTACN33.DGN, FTACN34.DGN, FTACN35.DGN, FTACN36.DGN, FTACN37.DGN, FTACN38.DGN, FTACN39.DGN, FTACN40.DGN, FTACN41.DGN, FTACN42.DGN, FTACN43.DGN, FTACN44.DGN, FTACN45.DGN, FTACN46.DGN, FTACN47.DGN, FTACN48.DGN, FTACN49.DGN, FTACN50.DGN, FTACN51.DGN, FTACN52.DGN, FTACN53.DGN, FTACN54.DGN, FTACN55.DGN, FTACN56.DGN, FTACN57.DGN, FTACN58.DGN, FTACN59.DGN, FTACN60.DGN, FTACN61.DGN, FTACN62.DGN, FTACN63.DGN, FTACN64.DGN, FTACN65.DGN, FTACN66.DGN, FTACN67.DGN, FTACN68.DGN, FTACN69.DGN, FTACN70.DGN, FTACN71.DGN, FTACN72.DGN, FTACN73.DGN, FTACN74.DGN, FTACN75.DGN, FTACN76.DGN, FTACN77.DGN, FTACN78.DGN, FTACN79.DGN, FTACN80.DGN, FTACN81.DGN, FTACN82.DGN, FTACN83.DGN, FTACN84.DGN, FTACN85.DGN, FTACN86.DGN, FTACN87.DGN, FTACN88.DGN, FTACN89.DGN, FTACN90.DGN, FTACN91.DGN, FTACN92.DGN, FTACN93.DGN, FTACN94.DGN, FTACN95.DGN, FTACN96.DGN, FTACN97.DGN, FTACN98.DGN, FTACN99.DGN, FTACN100.DGN	Scale: As Shown Date: MAY 1999 D.O. FILE NO. 57-37, 833
FORT MYERS BEACH HARBOR, FLORIDA MAINTENANCE DREDGING 11 AND 12 FOOT PROJECT DREDGING PLAN	DRAWING NO. <b>2/3</b>

From the Historical Archives of  
 Ostego Bay Environmental, Inc.  
 Joanne Semmer  
 1130 Main Street  
 Ft. Myers Beach, FL 33931

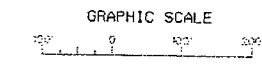


APPROXIMATE LOCATION OF  
COAST GAURD TURNING BASIN.  
SEE DWG. NO. 2/5 FOR DETAILS.

From the Historical Archives of  
Ostego Bay Environmental, Inc.  
Joanne Semmer  
1130 Main Street  
Ft. Myers Beach, FL 33931

AIDS TO NAVIGATION	PLANE COORDINATES	
	X	Y
DBN-13 (12/99)	670,405	772,405
DBN-14 (12/99)	671,868	771,926
DBN-16 (12/99)	671,991	772,277
DBN-18 (12/99)	672,174	772,429
DBN-20 (12/99)	672,577	772,332
DBN-22 (12/99)	672,881	772,171
SIGN (12/99)	670,963	772,497
TIDESTAFF (12/99)	670,966	772,496

- NOTES:
- SEE DWG. NO. 1/2 FOR LOCATION, VICINITY MAP, LEGEND, AND GENERAL NOTES.
  - SEE DWG. NO. 1/3 FOR CONTROL DATA.
  - SEE DWG. NO. 2/1 FOR SURVEY NOTES.
  - SEE DWG. NO. 3/1 FOR DISPOSAL AREA SURVEY NOTES.



<p>US Army Corps of Engineers Jacksonville District</p>	
<p>SAFETY ON THIS JOB DEPENDS ON YOU</p>	
<p>DEPARTMENT OF THE ARMY JACKSONVILLE DISTRICT CORPS OF ENGINEERS JACKSONVILLE, FLORIDA</p>	<p>Approved</p>
<p>DESIGNED BY: [Blank]</p>	<p>Description</p>
<p>DATE: [Blank]</p>	<p>No. Symbol Zone</p>
<p>FILE NO. [Blank]</p>	<p>Scale AS SHOWN</p>
<p>DATE: MAY 1999</p>	<p>Plot date</p>
<p>DATE: MAY 1999</p>	<p>Plot scale</p>
<p>O.O. FILE NO. 57-37, 833</p>	<p>DATE: MAY 1999</p>
<p>FILE NAME: FTMY24.DGN</p>	<p>DATE: MAY 1999</p>
<p>PROJECT: FORT MYERS BEACH HARBOR, FLORIDA</p>	<p>PROJECT: FORT MYERS BEACH HARBOR, FLORIDA</p>
<p>PROJECT: MAINTENANCE DREDGING</p>	<p>PROJECT: MAINTENANCE DREDGING</p>
<p>PROJECT: 11 AND 12 FOOT PROJECT</p>	<p>PROJECT: 11 AND 12 FOOT PROJECT</p>
<p>PROJECT: DREDGING PLAN</p>	<p>PROJECT: DREDGING PLAN</p>
<p>DRAWING NO.</p>	<p>DRAWING NO.</p>
<p>2/4</p>	<p>2/4</p>

From the Historical Archives of  
Ostego Bay Environmental, Inc.  
Joanne Semmer  
1130 Main Street  
Ft. Myers Beach, FL 33931

contract\ftmy2-4.dgn 01/05/01 02:05:02

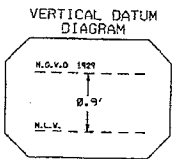
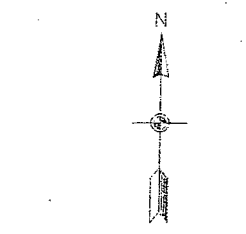
USCG BERTHING AREA SURVEY NOTES:

1. REFER SURVEY NO. 95-C025.
2. THIS SURVEY WAS OBTAINED 25 APRIL 1995.
3. SOUNDINGS ARE IN FEET AND TENTHS AND REFER TO MEAN LOW WATER, WHICH IS 0.9 FEET BELOW M.G.V.D. (NATIONAL GEODETIC VERTICAL DATUM OF 1929).
4. ALL ELEVATIONS ARE BELOW THE REFERENCE PLANE UNLESS PRECEDED BY A PLUS (+) SIGN.
5. TIDAL REDUCTIONS WERE MADE FROM OBSERVATIONS AT THE TIDE STAFF SET FROM BENCH MARK 'FMCG-2' (4-25-95).
6. PLANE COORDINATES ARE BASED ON THE TRANSVERSE MERCATOR PROJECTION FOR FLORIDA WEST ZONE (NAD27).
7. ALL AZIMUTHS ARE GRID, RECKONED CLOCKWISE FROM SOUTH.
8. ALL STATIONING REFERS TO BASELINES 'A' & 'B' RANGE 00.
9. AIDS TO NAVIGATION WERE LOCATED THIS SURVEY.
10. THE INFORMATION DEPICTED ON THESE DRAWINGS REPRESENT THE RESULTS OF SURVEY MADE ON THE DATES INDICATED AND CAN ONLY BE CONSIDERED AS INDICATION THE GENERAL CONDITIONS EXISTING AT THAT TIME.
11. REFER TO FIELD DATA

- A. ONE DEPTH-SOUNDER (FATHOMETER) ROLL.
- B. ONE 3.5-INCH MAGNETIC DISK: F02574
- C. FIELD BOOK: 95-LEE CO.-78.
- D. COMPUTER FILES: WC25ABH.Q45, WC25ABL.Q45, WC25BBH.Q45, WC25BBL.Q45.

AIDS TO NAVIGATION	PLANE COORDINATES	
	X	Y
NO WAKE SIGN	514.742	772.338
4/95		

MONUMENT	PLANE COORDINATES	
	X	Y
FMCG-1 (8/5/92)	514830.19	772381.52
FMCG-2 (8/5/92)	514844.25	772454.49
FMCG-3 (8/5/92)	514856.52	772573.16
FMBBH-20 (1/95)	514813.13	772309.69

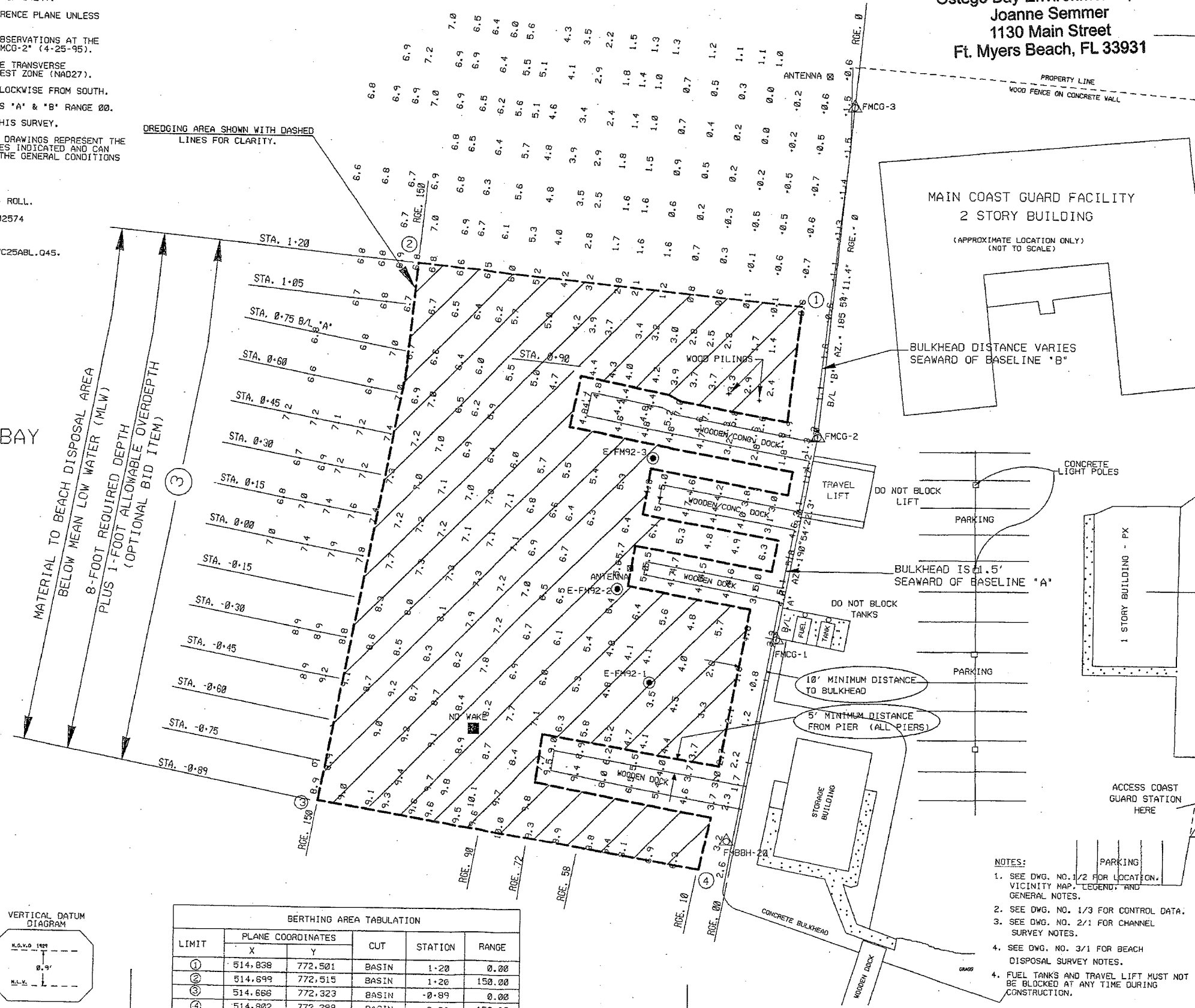


LIMIT	PLANE COORDINATES		CUT	STATION	RANGE
	X	Y			
①	514.838	772.501	BASIN	1+20	0.00
②	514.899	772.515	BASIN	1+26	150.00
③	514.886	772.323	BASIN	-0+89	0.00
④	514.802	772.299	BASIN	-0+89	150.00

SAN CARLOS BAY

MATERIAL TO BEACH DISPOSAL AREA  
BELOW MEAN LOW WATER (MLW)  
8-FOOT REQUIRED DEPTH  
PLUS 1-FOOT ALLOWABLE OVERDEPTH  
(OPTIONAL BID ITEM)

DREDGING AREA SHOWN WITH DASHED LINES FOR CLARITY.



From the Historical Archives of  
Ostego Bay Environmental, Inc.  
Joanne Semmer  
1130 Main Street  
Ft. Myers Beach, FL 33931

US Army Corps  
of Engineers  
Jacksonville District  
SAFETY ON THIS JOB  
DEPENDS ON YOU

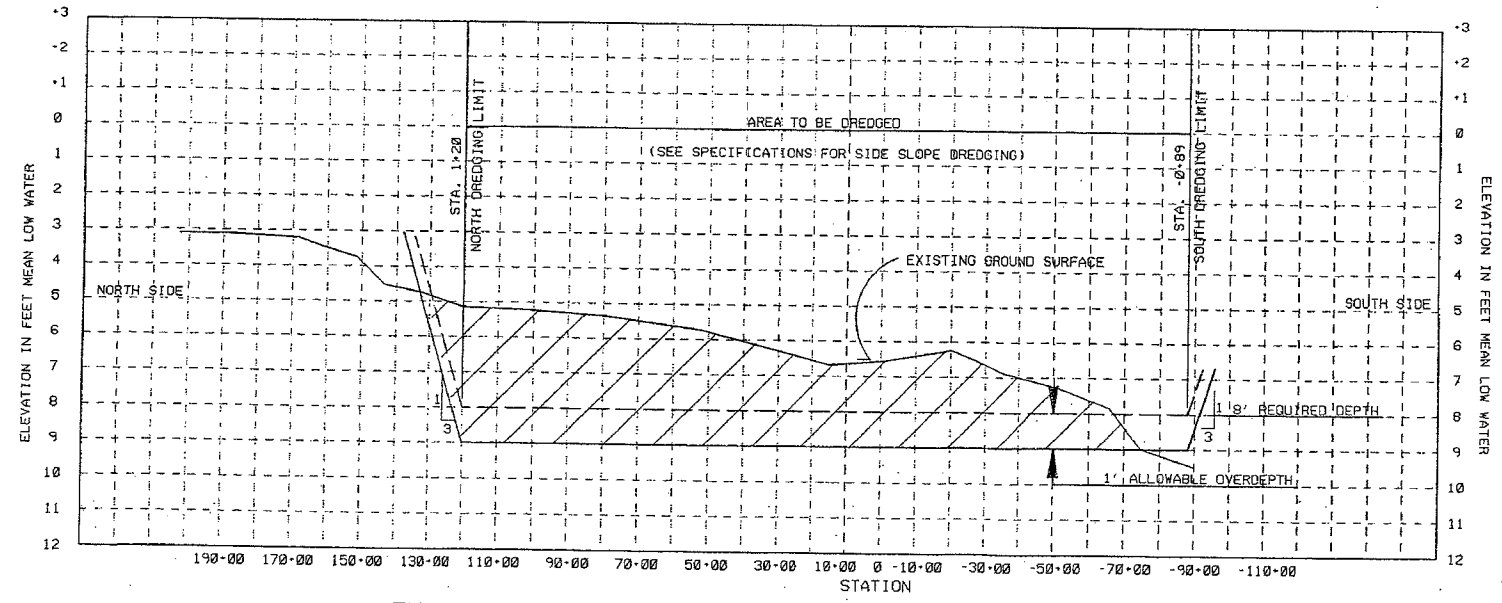
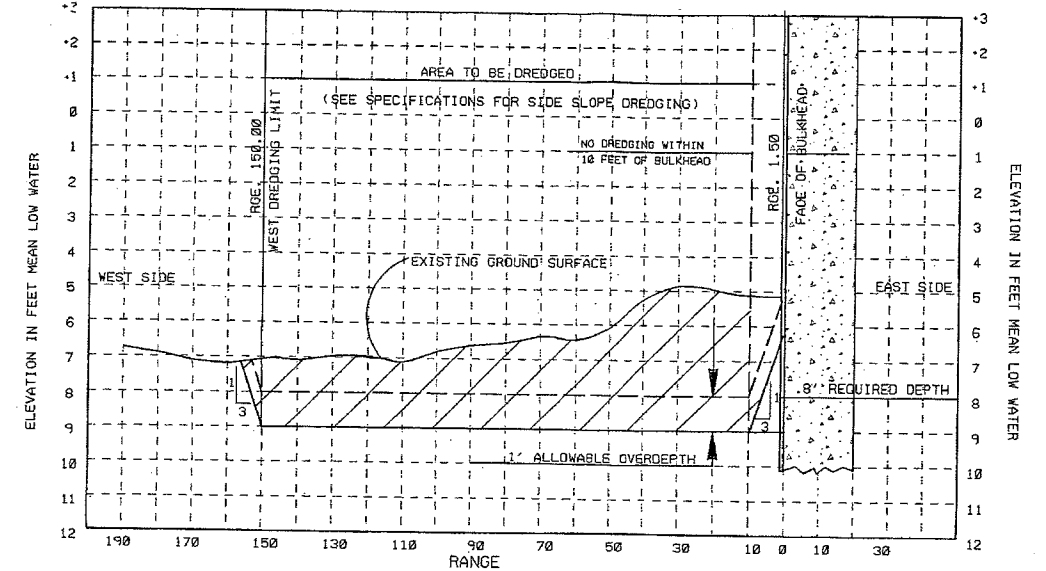
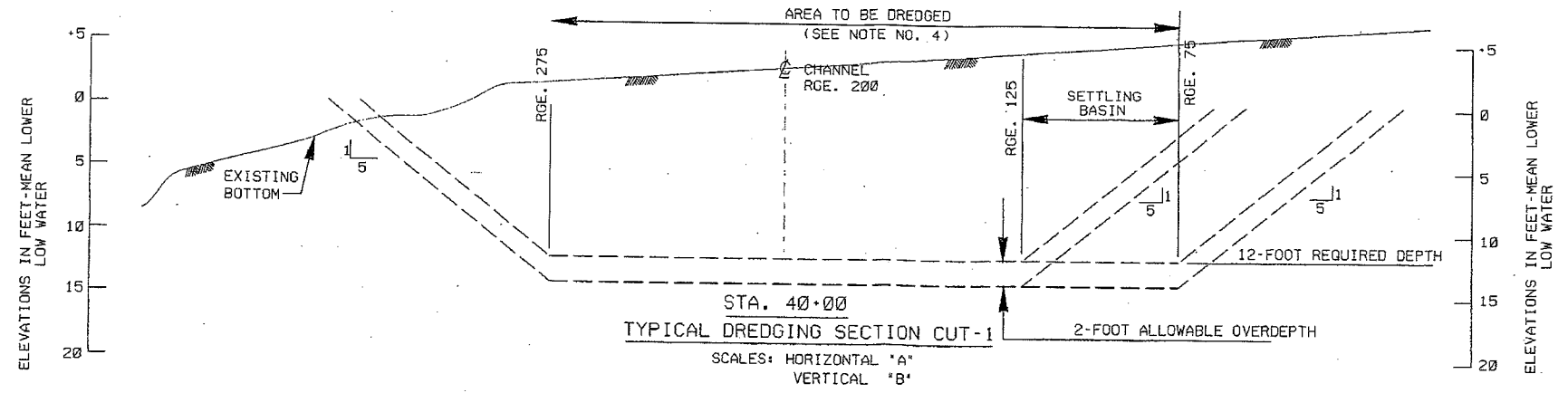
DEPARTMENT OF THE ARMY  
JACKSONVILLE DISTRICT CORPS OF ENGINEERS  
JACKSONVILLE, FLORIDA

DESIGNED BY: [Blank]  
DATE: MAY 1999  
D.O. FILE NO. 57-37, 833

FORT MYERS BEACH HARBOR, FLORIDA  
U.S. COAST GUARD STATION  
MAINTENANCE DREDGING  
8-FOOT PROJECT  
DREDGING PLAN & CONTROL DATA

DRAWING NO.  
2/5

- NOTES:
1. SEE DWG. NO. 1/2 FOR LOCATION, VICINITY MAP, LEGEND, AND GENERAL NOTES.
  2. SEE DWG. NO. 1/3 FOR CONTROL DATA.
  3. SEE DWG. NO. 2/1 FOR CHANNEL SURVEY NOTES.
  4. SEE DWG. NO. 3/1 FOR BEACH DISPOSAL SURVEY NOTES.
  4. FUEL TANKS AND TRAVEL LIFT MUST NOT BE BLOCKED AT ANY TIME DURING CONSTRUCTION.



From the Historical Archives of  
 Ostego Bay Environmental, Inc.  
 Joanne Semmer  
 1130 Main Street  
 Ft. Myers Beach, FL 33931

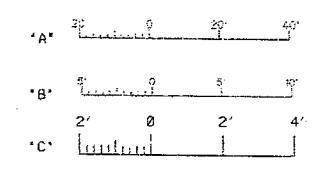
COAST GAURD TURNING BASIN NOTES:

- SEE DWG. NO. 1/2 FOR LOCATION AND VICINITY MAPS, LEGEND AND GENERAL NOTES.
- SEE DWG. NO. 2/5 FOR BERTHING AREA SURVEY NOTES AND CONTROL DATA.
- DREDGING SHOULD BE NO CLOSER THAN TEN (10) FEET FROM THE BULKHEAD.

NOTES:

- SEE DWG. NO. 1/2 FOR GENERAL NOTES AND LEGEND.
- SEE DWG. 2/1 FOR CHANNEL SURVEY NOTES.
- SEE DWG. 3/1 FOR BEACH D/A SURVEY NOTES.
- SEE SPECIFICATIONS FOR SIDE SLOPE DREDGING.

GRAPHIC SCALES



<p>US Army Corps of Engineers          Jacksonville District</p>	
<p>SAFETY ON THIS JOB          DEPENDS ON YOU</p>	
<p>DEPARTMENT OF THE ARMY          CORPS OF ENGINEERS          JACKSONVILLE, FLORIDA</p>	<p>No. Symbol Zone</p>
<p>DATE: MAY 1989          D.O. FILE NO. 57-37.833</p>	<p>FILE NAME: fmy2-6.dgn          DRAWING FILE: fmy2-6.dgn          PLOT DATE: atc16.dgn          PLOT TIME: atc16.dgn</p>
<p>FORT MYERS BEACH HARBOR, FLORIDA          MAINTENANCE DREDGING          11 AND 12-FOOT PROJECT          TYPICAL DREDGING SECTIONS</p>	<p>DRAWING NO.          2/6</p>



RESOLUTION EXPRESSING THE WILLINGNESS AND  
ABILITY OF LEE COUNTY, FLORIDA, TO MEET THE  
REQUIREMENTS OF LOCAL COOPERATION FOR  
THE EXTENSION OF FORT MYERS BEACH CHANNEL

WHEREAS, it has been determined by the Department of the Army, Jacksonville District, Corps of Engineers, that economic justification exists for Federal extension of the existing Federal project navigation channel at Fort Myers Beach approximately 2,000 feet easterly to and including a turning basin; and

WHEREAS, the extension of the navigation channel at Fort Myers Beach would be in the best interest of Lee County, Florida; and

WHEREAS, the Jacksonville District, Corps of Engineers, requires an expression of local cooperation before recommending the proposed Federal improvements to higher authority within the Corps of Engineers,

NOW, THEREFORE, BE IT RESOLVED by the Board of County Commissioners of Lee County, Florida, that:

1. The Department of the Army, Corps of Engineers, is hereby requested to extend the Federal project navigation channel at Fort Myers Beach as shown in the tentative plan of improvement.
2. Should the improvement project be finally approved, Lee County, Florida, is willing and able to:
  - a. Contribute in cash 2.7 percent of the construction cost including engineering and design and supervision and administration of construction of all work to be provided by the Corps of Engineers, an amount now estimated at \$1,500, to be paid in a lump sum prior to start of construction in accordance with construction schedules as required by the Chief of Engineers, the final apportionment of cost to be made after actual costs have been determined;

- b. Provide without cost to the United States all lands, easements, and rights-of-way required for construction and subsequent maintenance of the project and for aids to navigation upon the request of the Chief of Engineers, including suitable areas determined by the Chief of Engineers to be required in the general public interest for initial and subsequent disposal of spoil; and necessary retaining dikes, bulkheads, and embankments therefor, or the costs of such retaining works;
- c. Hold and save the United States free from damages that may be attributed to construction and maintenance of the project;
- d. Provide and maintain at local expense adequate public terminal and transfer facilities open to all on equal terms;
- e. Provide and maintain without cost to the United States depths in berthing areas and local access channels serving the terminals commensurate with the depths provided in the related project areas;
- f. Accomplish without cost to the United States such alterations as required in the cable crossings as well as their maintenance; and
- g. Establish regulations prohibiting discharge of untreated sewage, garbage, and other pollutants in the water of the channel and harbors by users thereof, which regulations shall be in accordance with applicable laws or regulations of Federal, State, and local authorities responsible for pollution prevention and control.

ADOPTED this 17<sup>th</sup> day of July, 1968.

  
 Chairman, Board of County Commissioners

ATTEST: D. T. Farabee, Clerk

By: Lois Kurt  
 Deputy Clerk

State of Florida  
 County of Lee

I, D. T. Farabee, Clerk of the Circuit Court in and for said County and State do hereby certify that the foregoing is a true photostatic copy of Resolution adopted by Board of Co. Comm on 7/17/68 Given under my hand and official seal at Fort Myers, Florida, this 1st day of August A. D. 1968

D. T. FARABEE, Clerk

By: Lois Kurt D. C.

COMMENTS OF THE BUREAU OF THE BUDGET

EXECUTIVE OFFICE OF THE PRESIDENT

BUREAU OF THE BUDGET

WASHINGTON 25, D. C.

June 12, 1959

My dear Mr. Secretary:

Assistant Secretary Short's letter of June 1, 1959, submitted the proposed report of the Chief of Engineers on Gulf Coast Shrimp Boat Harbors, Florida, requested by resolutions of the Committee on Rivers and Harbors, House of Representatives, and the Committee on Public Works, United States Senate, adopted June 28, 1946, and February 14, 1950, respectively. It is also submitted in response to five other Congressional authorizations listed in the report.

The Chief of Engineers finds that improvements at Venice and Lemon Bay, Florida, are not justified at this time and that improvements at Fort Meyers Beach and Naples are advisable to meet the needs of prospective navigation. He accordingly recommends:

- a. Improvement at Fort Meyers Beach, Florida, to provide for a channel 12 feet deep from San Carlos Bay into Matanzas Pass, thence 11 feet deep through Matanzas Pass to the upper shrimp terminals at an estimated cost of \$168,000 for construction and \$20,000 annually for maintenance. This work would be subject to several conditions of local cooperation including the requirement that local interests contribute in cash 1.3 percent of the cost of construction, and that such contribution, presently estimated at \$2,200, be paid in a lump sum prior to commencement of construction. The net cost to the United States for the recommended plan of improvement at Fort Meyers Beach would be \$165,800 for construction and \$20,000 annually for maintenance.
- b. Modification of the existing project for Channel from Naples to Big Marco Pass, Florida, to provide for a channel 12 feet deep from the Gulf of Mexico to Gordon Pass and Naples Bay to the bridge on United States Highway No. 41, a turning basin 10 feet deep in upper Naples Bay, and a turning basin 8 feet deep at the municipal yacht basin. The estimated cost of this work would be \$331,000 for construction and \$39,000 annually for maintenance in addition to that now required. This work would be subject to several conditions of local cooperation including the requirement that local interests



**NOW OPEN**  
BEACHFRONT DINING  
AT PINK SHELL BEACH RESORT & MARINA



Your Community News Business Opinion Lifestyles Sports Ads Classifieds Services e-edition

**BREAKING NEWS >> Russo, a longtime local restaurateur, dies at 60**

News

- Your Community
- News
- Opinion
- Lifestyles
- Sports
- Ads
- Services
- e-edition

/ News /

Community spotlight: Miffie...

Gore, Boback are victorious...>

## Matanzas Pass to be dredged this summer

Channel can be as low as 8 or 9 feet in depth, local shrimper says

March 16, 2016

By John Morton (jmorton@breezenewspapers.com), Fort Myers Beach Bulletin, Fort Myers Beach Observer

Save | Post a comment |

For the first time since 2009, major dredging will occur this summer in Matanzas Pass, giving relief to the boats that travel along the federal channel and sometimes bottom out.

"Right now, by the point (of Estero Island's northern tip) I'd say it's about only 8 or 9 feet deep at low tide," said Dennis Henderson, co-owner of Trico Shrimp Company on San Carlos Island. "We're getting stuck."

The project, to be funded and overseen by the U.S. Army Corps of Engineers, will result in the removal of approximately 130,000 cubic yards of sand, bringing the channel to a recommended depth of at least 14 feet. The cost is projected between \$1 million and \$5 million.

Article Photos



Matanzas Pass, which runs below the Sky Bridge and out...

That amount of sand, when dumped upon a football field, would fill it 60 feet high. It will be relocated to Fort Myers Beach and placed about 100 feet offshore, in between the Lani Kai and the Red Coconut RV Park, according to Town Manager Don Stilwell. When in place, it will diminish wave strength and slowly feed sand onto the beach area.

The sand, because of impurities, can't just be dumped directly on the beach, said Stephen Boutelle, an operations manager with Lee County's Natural Resources Division.

SUBSCRIBE TODAY!

News, Blogs & Events

I am looking for:

SEARCH

in:

- News, Blogs & Events
- Web
- EZToUse.com

**EZToUse.com**  
Your #1 source for internet yellow pages

**Jack's**  
FARM & FORK

**NOW OPEN**  
BEACHFRONT DINING  
AT PINK SHELL BEACH RESORT & MARINA

- Freshest ingredients
- Local and sustainable foods
- Magnificent views

Click for more

**Jack's**  
FARM & FORK

**NOW OPEN**  
BEACHFRONT DINING  
AT PINK SHELL BEACH RESORT & MARINA

Freshest ingredients. Local and sustainable foods.  
Magnificent views.

Click for more

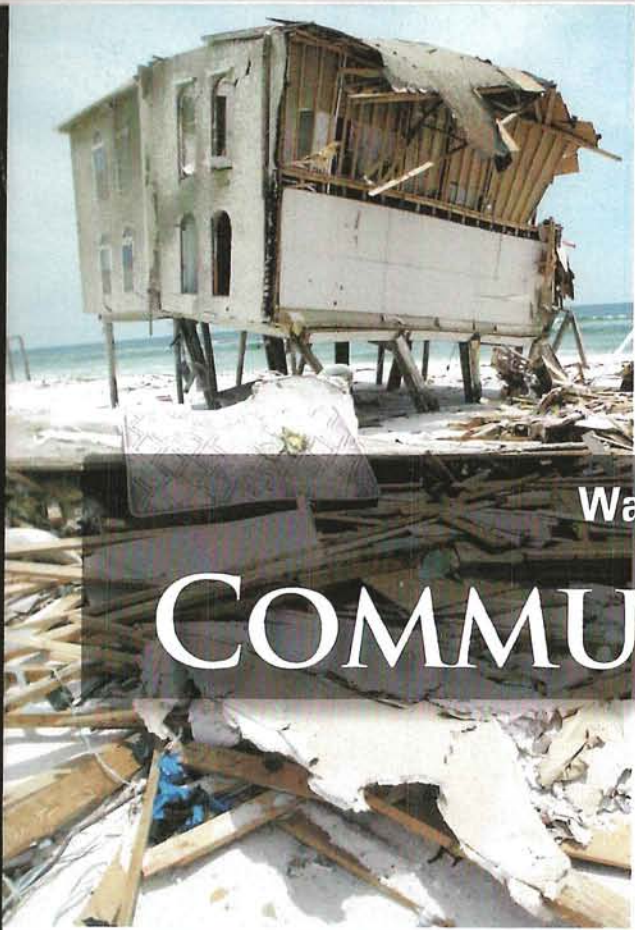
**Jack's** **NOW OPEN**  
BEACHFRONT DINING  
AT PINK SHELL BEACH RESORT & MARINA

Click for more

**Sun**  
WELLNESS  
Click Here

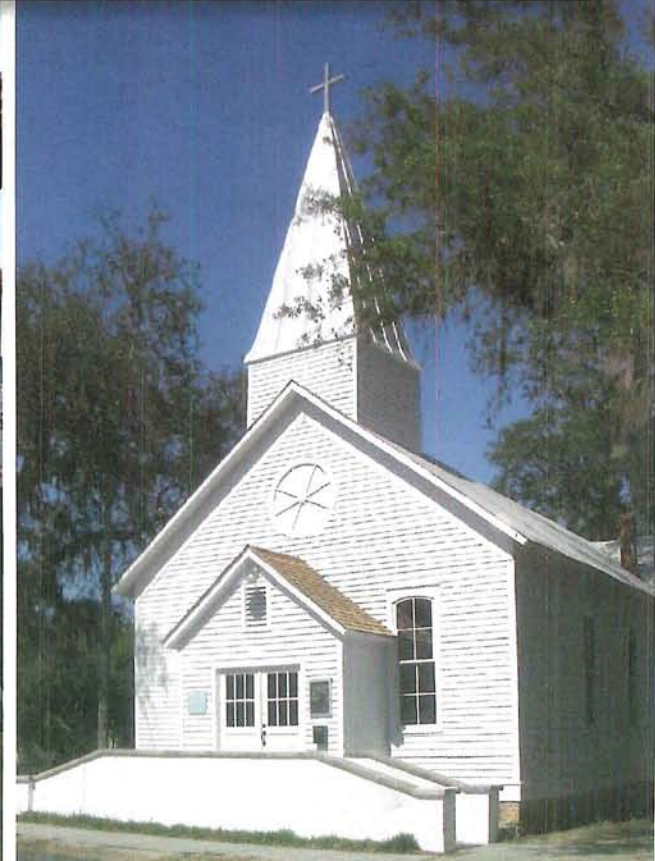
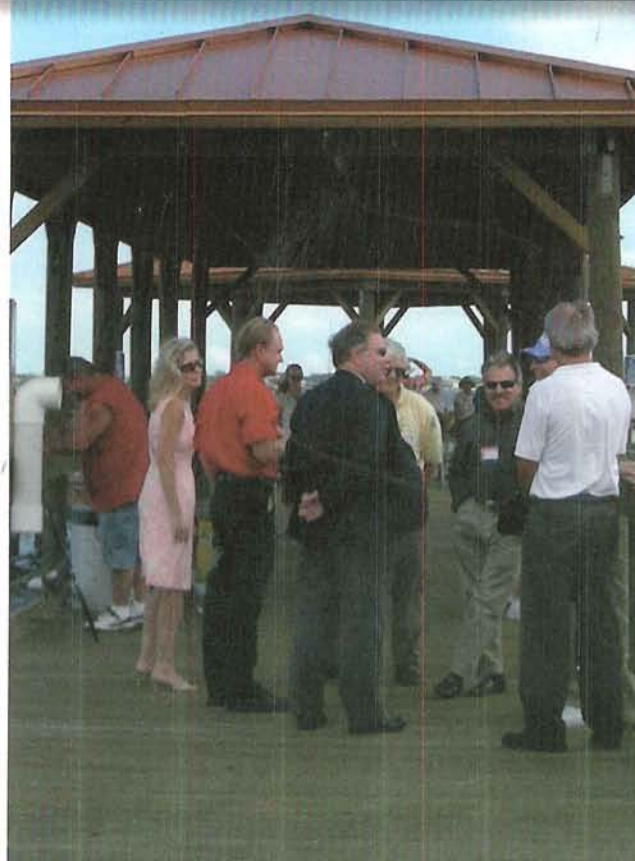
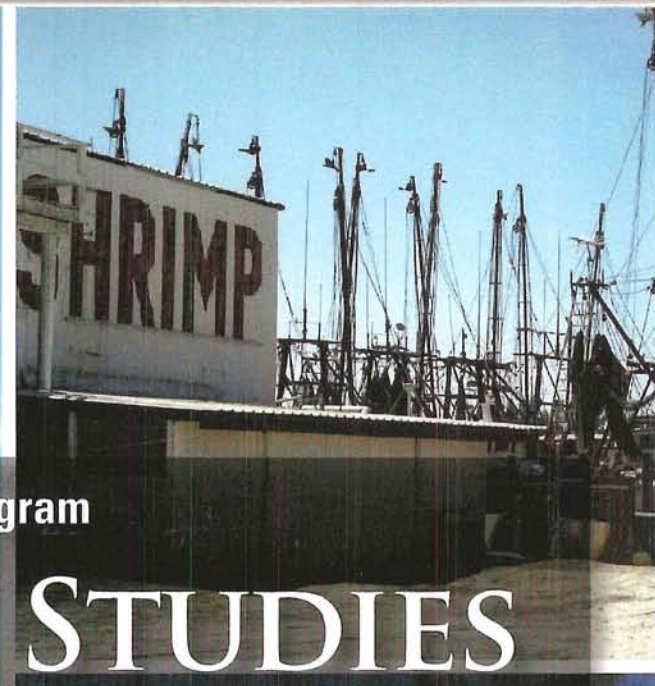
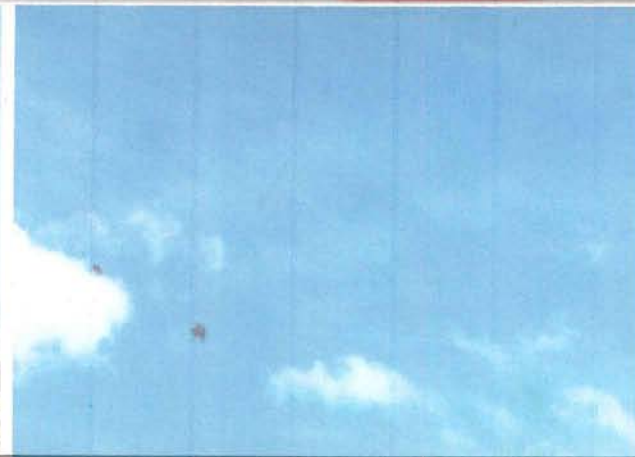
Steven Meckstroth, M.D.  
Gastroenterology Specialists Naples  
Premier Endoscopy Center Naples

From the Historical Archives of  
Osteo Bay Environmental, Inc.  
Joanne Semmer  
1130 Main Street  
Ft. Myers Beach, FL 33931



Waterfronts Florida Partnership Program

# COMMUNITY CASE STUDIES



## Community Snapshot

**VISION:** "San Carlos Island is a people-oriented community with an important working waterfront that includes vibrant commercial seafood and other marine-based industries and recreational opportunities. These assets contribute in making San Carlos Island an attractive community for its permanent and seasonal residents as well as an interesting area for visiting tourists."

**DESIGNATION:** 1997

**APPLICANT:** Lee County Economic Development

**STATUS:** Active; committee meets quarterly; Partnership now established as a non-profit organization.

**PARTNERS:** Lee County; Ostego Bay Foundation; U.S. Coast Guard; local marinas; local fishermen; University of Florida; Florida West Coast Inland Navigation District.

**KEY ACCOMPLISHMENTS:** Working Waterfront Trail tour; Comprehensive Plan and Zoning Code "Water Dependent" Overlay; Ostego Bay Oil Spill Co-op.

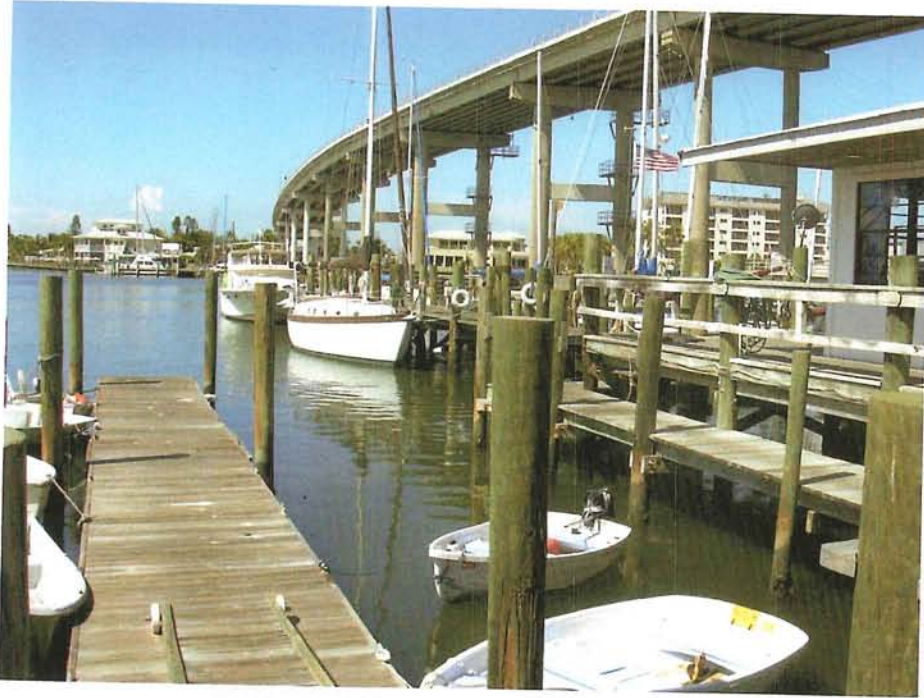
**CURRENT CHALLENGES:** Incorporation as a city desired but not allowed by Florida Statutes; high property taxes in addition to submerged land leases.

### FLORIDA ASSESSMENT OF COASTAL TRENDS DATA:

<b>Number of Active Volunteers:</b>	12
<b>Volunteer Hours Contributed:</b>	3,000
<b>Public Dollars Contributed:</b>	\$71,642



# SAN CARLOS



San Carlos Island is a small working waterfront tucked under the Matanzas Pass Bridge connecting Fort Myers with Fort Myers Beach. The half-mile long barrier island is dotted with fish houses, commercial fishing docks, an open-air waterfront restaurant and seafood market, a mix of single family homes and trailer parks, and various small businesses.

## A HEALTHY BAY = HEALTHY SEAFOOD

In 1997, a self-created committee, with the help of the Lee County Office of Economic Development, applied for Waterfronts Florida designation to help the community deal with the capacity of shrimping and fishing boats that docked there seasonally, as well as educate residents and visitors about the Island's working waterfront.

To implement the public education portion of the committee's goal, the community developed a self-guided working waterfront tour called "A Healthy Bay = Healthy Seafood." Starting at Main Street with an informational kiosk, the tour takes participants along a short trail to a boardwalk where there is a clear

view of the shrimp and fish boats that line the waterfront. The kiosk provides information about the bay, the habitat, and fish that live in it. Although originally designed to be a self-guided tour, a volunteer is available to provide a narrated tour every Wednesday.

During its second year of designation, the Waterfront Partnership attempted to tackle the issue of crowding along the docks by commissioning a study to come up with alternatives. The resulting recommendation was to construct an enclosed basin large enough to dock 40 shrimp boats. Although well received by the public, the construction of the basin has not yet been undertaken.



The Waterfronts Committee has been spearheaded by the same volunteer program manager since its inception. Also serving as the CRA board, the Committee morphed into a non-profit Community Redevelopment Corporation that meets quarterly. The program manager is also the executive director of the Ostego Bay Foundation Marine Science Center, and the activities of the two groups gel together. The Ostego Bay Oil Spill Co-op, made up of volunteer commercial fishermen and marina employees and partnering with the Coast Guard, provides first response in the event of an oil spill. The Marine Science Center provides a marine science experience through interactive exhibits,



aquariums, hands on tank, collections and displays, and holds a children's day camp during the summer months.

In 1999, the Florida West Coast Inland Navigation District commissioned a study to determine the affects of the local fishing industry on Lee County's overall economy. The study found that although the impacts vary from year to year depending on economic conditions the shrimping industry contributes \$55 million and over 1,500 jobs to the economy. The study reported that:

*"The shrimp processing/packing industry on San Carlos Island represents an important component of the Lee County economy. Activities associated with the harvesting, off-loading, processing, packing, and shipping, of shrimp from San Carlos Island facilities have been shown to be intrinsically linked with several factors of the local economy. These activities create positive economic impacts to the local economy as shrimp products are sold to buyers located outside of Lee County and as shrimp is purchased locally by non-residents. The sale of shrimp to both local and non-local buyers results in the purchase of inputs from a variety of services and supply firms, and the distribution of*

*incomes to local employees. These expenditures are circulated within the Lee County economy as these dollars are spent and re-spent...<sup>1</sup>"*

Recognizing the need to protect the local fishing fleet and related waterfront uses, Lee County amended its Comprehensive Plan to include the "San Carlos Island Water-Dependent Overlay Zone." This land use overlay allows for marinas, marine-related industrial and commercial uses, and marine storage areas such as dry-docks. Ancillary uses, such as restaurants, are also permitted under certain conditions. The County's Land Development Code was also modified to permit marine-related businesses.

In spite of these protections, a 40-acre parcel is slated for redevelopment into a condo/hotel and a yacht club. At one point, the committee explored the possibility of incorporation to gain autonomy over its zoning and land use issues, but Florida Statutes generally limit the creation of a new city if it is within two miles of another city. San Carlos Island's proximity to Fort Myers Beach stifles its ability to become an independent city. As of late, taxes have also been an issue for San Carlos Island—taxing on the highest and best use of the property, as well as paying the submerged land lease to the State of Florida, has been a strain on the commercial fishing industry.

Despite these pressures, San Carlos Island prides itself on its public education regarding the health of sea grass and mangrove communities and how they relate to the health of the bay and the fishing industry.

<sup>1</sup> Adams, Chuck; David Mulkey, and Alan Hodges. 1999. An Assessment of the Economic Importance of the San Carlos Island Shrimp Processing Industry to the Lee County Economy, p. 9. Food and Resource Economics Department, Institute of Food and Agricultural Department (IFAS), University of Florida: Gainesville, Florida.





## Southwest Florida Waterfront Institute Board of Trade

792 Oak Street Fort Myers Beach, Florida 33931  
Joanne Semmer, President  
(239) 463-9326 fax (239) 463-9326 jj37a@yahoo.com

June 7, 2016

Mr. Peter Blackwell  
Mr. Rick Burris  
Lee County Department of Community Development  
Planning Division  
P.O. Box 398  
Fort Myers, Florida 33902

RE: CPA2016-00002

Dear Mr. Burris

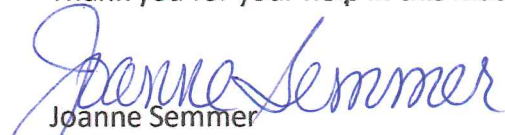
Thank you for meeting with me on Friday June 3, 2016 regarding the Proposed Amendment to the Lee County Comprehensive Land Use Plan Map Amendment CPA2016-00002.

After our meeting I met with committee members from San Carlos Island and it was determined that the map change you shared with me is not adequate to represent the entire Matanzas Pass Federal Channel right of way.

I provided you with a copy of the US Army Corps of Engineers survey of the Federal Channel as well as a copy of an official navigation chart that clearly shows where the Federal Channel exists.

Please provide a map that clearly designates the boundaries of the Matanzas Pass Federal Channel on the proposed Comp Plan Map amendment.

Thank you for your help in this matter.

  
Joanne Semmer  
President



# Florida Department of Environmental Protection

Marjory Stoneman Douglas Building  
3900 Commonwealth Boulevard  
Tallahassee, Florida 32399-3000

Charlie Crist  
Governor

Jeff Kottkamp  
Lt. Governor

Michael W. Sole  
Secretary

## CONSOLIDATED JOINT COASTAL PERMIT AND SOVEREIGN SUBMERGED LANDS AUTHORIZATION

### PERMITTEE/AUTHORIZED ENTITY:

U.S. Army Corps of Engineers

Jacksonville District  
c/o Eric P. Summa  
Chief, Environmental Branch  
Planning Division  
701 San Marco Blvd.  
Jacksonville, FL 32207

### PERMIT INFORMATION:

Permit/Authorization Number: 0158893-005-JC

Issuance Date: March 09, 2009

Expiration Date of Construction Phase: March  
6, 2019

Project Name: Matanzas Pass Channel  
Restoration and Maintenance Dredging

County: Lee

---

This permit is issued under the authority of Chapter 161 and Part IV of Chapter 373, Florida Statutes (F.S.), and Title 62, Florida Administrative Code (F.A.C.). Pursuant to Operating Agreements executed between the Department of Environmental Protection (Department) and the water management districts, as referenced in Chapter 62-113, F.A.C., the Department is responsible for reviewing and taking final agency action on this activity.

### ACTIVITY DESCRIPTION:

The project is to dredge the Matanzas Pass Federal Navigation channel in order to restore portions of the channel and maintain other portions of the channel to an authorized depth of -12 feet MLLW plus a 2-foot allowable overdepth, to a depth of -14 feet MLLW. Approximately 240,000 cubic yards of dredged material will be placed in the nearshore, seaward of the sand bar on Estero Island.

### ACTIVITY LOCATION:

The dredge site is located at Matanzas Pass, Lee County, Section 24, Township 46 South, Range 23 East, and the placement site is located in the nearshore portion of Estero Island, between DEP Reference Monuments R-182 and R-187A, in the Gulf of Mexico, Class III Waters.