
Memorandum

TO: File

FROM: Brenda Yates

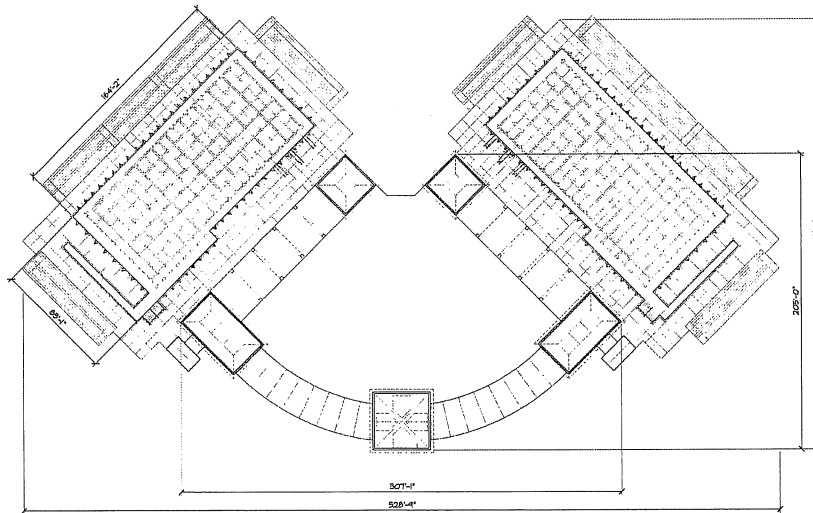
DATE: June 6, 2005

RE: FIRST TEE PROGRAM – THE FOUNTAINS

FIRST SPLASH- AQUATIC:

4 pools; 2 outdoor, 50 meter pools and 2 indoor, 25 meter pools, public access;
Wellness Center, 20,000 sf under roof, and needs to have outdoor sight lines not
obstructed or viewing any other structures (i.e. overlooking a preserve)
500 parking spaces; overflow event parking 1,200 required.

Swimming Facility site minimally requires approx. 530' by 300' (approx 4 acres) plus
acreage for maintenance, pumping station, etc.



FIRST TEE – GOLF:

3 hole minimum, 9 holes preferred for kids program; with Driving Range/Golf Academy on approx 25 acres; Consideration must be given to sun and prevailing winds 6,000 sf building, shared building with First Serve;
Golf Course: 18 to 27 holes private/public course; 5,000 sf Maintenance Facility on approx. 3.5 acres Clubhouse 6000 sf and Cart Barn approx. 12,000 sf

FIRST SERVE - TENNIS:

18 regulation courts; requiring approx.15 acres
1 tournament court with stands for 5000 (most will be temp); approx. 12 acres
Expected to attract 300 per weekday, 200 per day weekend, and 12 tournament events per year (total 2000 people)

FIRST GOAL? – SOCCER:

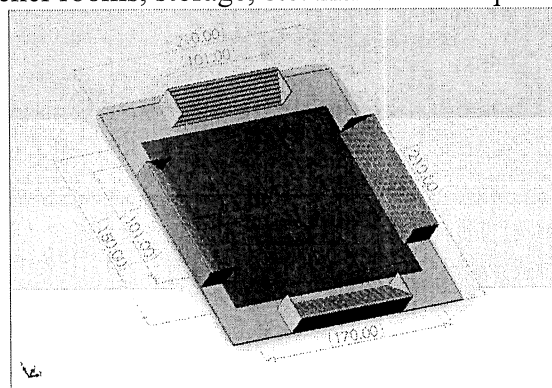
6 fields; 300 ' by 150 ' (approx 1 acre each) or about 6.25 acres
Can be used for overflow parking for the major events.

FIRST PITCH? – SOFTBALL:

4 softball fields; approx. 12 acres
The softball fields should be placed inside a 700' x 700' square, with one field in each quadrant, with a minimum of 270' from backstop to outfield fence, the remaining distance for temp stands, public walkway and maintenance equipment access.

FIRST SPIKE? – USA VOLLEYBALL

8 indoor courts; Bleachers for 1000 attendees (see diagram)
Sports floor 1 acre; Locker rooms, storage, etc. make the footprint a min. of 1.5 acres.

**PARKING:**

Expecting to need 7 + acres of shared parking – specifically, with Softball requiring 120 spaces, Soccer 180, and 54 for Tennis (from Lee Co. Parks and Rec.).

First Complex designed by Lee County Recreation Department:

96.4 acres; 1,200 parking spaces

