



**LOCAL PLANNING AGENCY
OLD LEE COUNTY COURTHOUSE
2120 MAIN STREET, FORT MYERS, FL 33901
BOARD CHAMBERS
MONDAY, APRIL 28, 2014
8:30 AM**

AGENDA

1. Call to Order/Review of Affidavit of Publication/Pledge of Allegiance
2. Public Forum
3. Approval of Minutes – March 24, 2014
4. MPO Land Use Scenario Presentation
5. Lee Plan Amendments
 - A. [CPA2013-00008 Estero Apartments](#)
 - B. [CPA2014-00003 Estero Plan](#)
6. New Horizon 2035: Plan Amendments
 - A. [CPA2011-00008 Future Land Use Element](#) – Continued
 - B. [Future Land Use Map](#)
7. Other Business
8. Adjournment – Next Meeting Date: Monday, May 19, 2014

A verbatim record of the proceeding will be necessary to appeal a decision made at this hearing. In accordance with the Americans with Disabilities Act, reasonable accommodations will be made upon request. If you are in need of a reasonable accommodation or would like additional information, please contact Janet Miller at 239-533-8583.



DIVISION OF PLANNING

MEMORANDUM



LEE COUNTY

SOUTHWEST FLORIDA

to: Local Planning Agency
from: ^{BDD for} Paul O'Connor, AICP, Director

subject: Land Use Element and
Future Land Use Map

date: April 18, 2014

Staff presented the Land Use Element to the LPA at the March 24, 2014 meeting. At the March 24, 2014 LPA meeting LPA members requested an opportunity to review the proposed Future Land Use Map prior to recommending transmittal of the Land Use Element. On the April LPA Agenda is a continued discussion of the Land Use Element as well as the presentation of the Future Land Use Map.

The continued discussion about the Land Use Element will be based on the language that was presented at the last LPA hearing. Because this was provided at the March LPA hearing, the packet does not include copies of the Land Use Element. The proposed Land Use Element may be viewed at the following link or staff will provide a copy upon request:

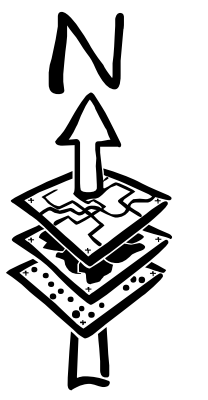
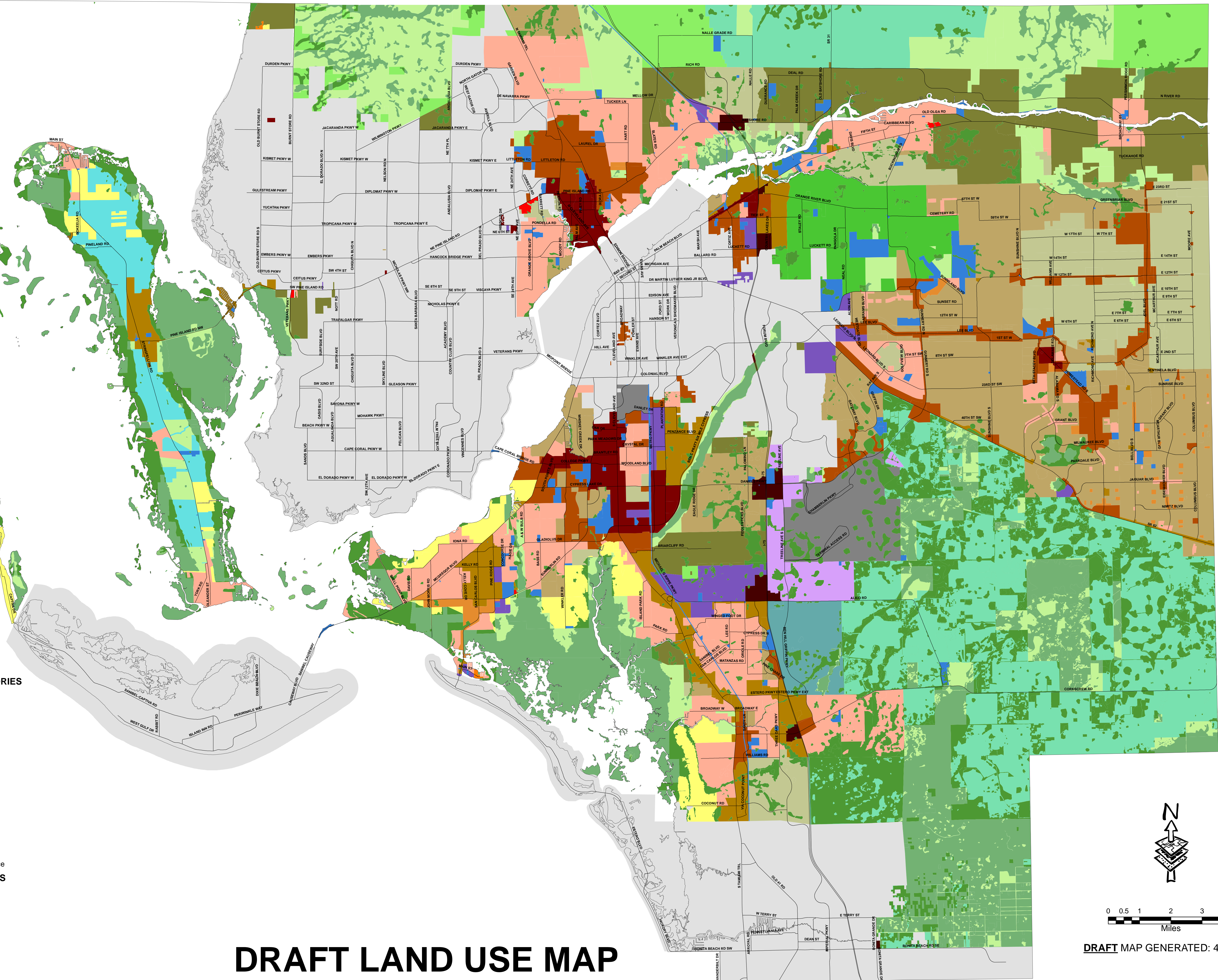
<http://www.lee-county.com/gov/dept/dcd/Planning/Amendments/Documents/RA2012/CPA2011-08/CPA201108A2.pdf>.

A copy of the proposed Future Land Use Map has been provided on an 11 x 17 sheet of paper. The Future Land Use Map is also available online in greater detail.

DRAFT LAND USE MAP

DRAFT

- Land Use Map**
- URBAN CATEGORIES**
- Urban Core
 - Urban Places
 - Urban Neighborhood
- SUBURBAN CATEGORIES**
- Suburban 10
 - Suburban 6
 - Suburban 4
 - Suburban 2
 - Coastal Suburban
- ECONOMIC DEVELOPMENT CATEGORIES**
- Commercial
 - Industrial Research Development
 - Tradeport
 - Airport Lands
 - University Community
 - Interchange
- RURAL CATEGORIES**
- Rural
 - Rural Community Preserves
 - Coastal Rural
 - Outer Islands
 - Open Lands
 - Density Reduction / Groundwater Resource
- CONSERVATION LANDS CATEGORIES**
- Conservation Lands - Upland
 - Conservation Lands - Wetland
- COUNTY-WIDE CATEGORIES**
- Public Facilities
 - Wetlands
 - Place-Based Categories
 - Incorporated Areas



DRAFT MAP GENERATED: 4/4/2014

DRAFT LAND USE MAP