



**LOCAL PLANNING AGENCY
OLD LEE COUNTY COURTHOUSE
2120 MAIN STREET, FORT MYERS, FL 33901
BOARD CHAMBERS
WEDNESDAY, DECEMBER 11, 2013
8:30 AM**

AGENDA

1. Call to Order/Review of Affidavit of Publication
2. Pledge of Allegiance
3. Public Forum
4. Approval of Minutes – October 28, 2013
5. Land Development Code Amendments
 - A. [North Captiva](#)
 - B. [Caloosahatchee Shores, Lehigh Acres, and North Fort Myers Community Plan Amendments](#)
 - C. [Lehigh Acres Activity Center Regulating Plan](#)
 - D. [Wellfield Protection](#)
6. Publicly Initiated Plan Amendments
 - A. [CPA2013-00007 Wellfield Protection](#)
7. Other Business
8. Adjournment – Next Meeting Date: Monday, January 27, 2014

A verbatim record of the proceeding will be necessary to appeal a decision made at this hearing. Contact the Lee County Division of Planning at 239-533-8585 for further information on obtaining a record. In accordance with the Americans with Disabilities Act, reasonable accommodations will be made upon request. Contact Janet Miller at 239-533-8583.

www.LeeCountyTownHall.com



Share your ideas at Lee County
Government's virtual public forum today!

**CPA2013-07
WELLFIELD AND IRRIGATION
OVERLAY COMPREHENSIVE PLAN
AMENDMENT
TO THE**

LEE COUNTY COMPREHENSIVE PLAN

THE LEE PLAN

Lee County Board of County Commissioners
Sponsored Amendment and Staff Analysis

**LPA Public Hearing Document
For the
December 11th, 2013 Public Hearing**

*Lee County Planning Division
1500 Monroe Street
P.O. Box 398
Fort Myers, FL 33902-0398
(239) 533-8585*

November 26, 2013

**LEE COUNTY
DIVISION OF PLANNING
STAFF REPORT FOR
COMPREHENSIVE PLAN AMENDMENT
CPA2013-07**

Text Amendment

Map Amendment

This Document Contains the Following Reviews	
<input checked="" type="checkbox"/>	Staff Review
	Local Planning Agency Review and Recommendation
	Board of County Commissioners Hearing for Transmittal
	Staff Response to Review Agencies' Comments
	Board of County Commissioners Hearing for Adoption

STAFF REPORT PREPARATION DATE: November 26, 2013

PART I - BACKGROUND AND STAFF RECOMMENDATION

A. SUMMARY OF APPLICATION

1. EXECUTIVE SUMMARY:

This amendment proposes two changes to the Lee Plan. The first change, following a request by the South Florida Water Management District (SFWMD), removes language in the Plan pertaining to SFWMD permitting authority.

The second change updates the Lee Plan Map that identifies Lee County Utility wells and their associated protection zones which identify adjacent lands needed to protect the public water supply.

2. RECOMMENDATION:

Staff recommends that the Board of County Commissioners *transmit* the proposed amendment to the Lee Plan. This recommendation includes deleting Map 13, updating Map 8, and renaming Map 8 to "Wellfield Protection Zones." The recommendation includes transmitting the following modified Lee Plan language shown in strikethrough/underline form:

~~**POLICY 1.7.10:** The Irrigation Well overlay in Bonita Springs (as defined in this plan) is hereby declared a critical area for future potable water supply, based on evidence that withdrawals from the main potable aquifer, the lower Tamiami aquifer, are approaching or exceeding the maximum safe yield. In response to this designation, the county will maintain current regulations to provide that new irrigation well permits in the Irrigation Well overlay may not utilize the main potable water source. For the purposes of this plan, the boundaries of the Irrigation Well overlay are indicated on Map 13 of the Future Land Use Map series. (Also see Policy 54.1.9 for new permit requirements for wells in Lehigh Acres, and Policy 2.4.2 for special requirements for amendments to the Future Land Use Map). (Amended by Ordinance No. 94-30, 00-22, Amended and Relocated by Ordinance No. 02-02)~~

POLICY 2.4.2: All proposed changes to the Future Land Use Map in critical areas for future potable water supply (~~Bonita Springs as described in Policy 1.7.10;~~ Lehigh Acres as described in Policy 54.1.9; and all land in the Density Reduction/ Groundwater Resource land use category) will be subject to a special review by the staff of Lee County. This review will analyze the proposed land uses to determine the short-term and long-term availability of irrigation and domestic water sources, and will assess whether the proposed land uses would cause any significant impact on present or future water resources. If the Board of County Commissioners wishes to approve any such changes to the Future Land Use Map, it must make a formal finding that no significant impacts on present or future water resources will result from the change. (Amended by Ordinance No. 92-47, 94-30, 00-22, 02-02)

POLICY 54.1.9: Lehigh Acres (as defined by outer boundaries of its Privately Funded Infrastructure overlay on the Future Land Use Map) is hereby declared a critical area for future potable water supply due to fluctuating water levels in the Sandstone aquifer. In response to this designation, the county will amend current regulations to provide that new wells in Lehigh Acres must be constructed to accommodate submersible pumps. (Also see ~~Policy 1.7.10 for new permit requirements for irrigation wells in Bonita Springs,~~ and Policy 2.4.2 for special requirements for amendments to the Future Land Use Map.) (Amended by Ordinance No. 94-30, 00-22, 02-02)

3. APPLICANT/REPRESENTATIVES:

Lee County Board of County Commissioners/Lee County Division of Planning staff in conjunction with Lee County Utilities and Natural Resources staff.

4. REQUEST:

Amend the Lee Plan to remove provisions which regulate permitting of the use of water for irrigation from the Lower Tamiami aquifer. Also update Map 8 of the Lee Plan, which

identifies the Wellfield Protection Zones for Lee County public wells and Aquifer Storage and Recovery wells.

B. FINDINGS OF FACT SUMMARY

BASIS AND RECOMMENDED FINDINGS OF FACT:

- The Lee County Board of County Commissioners initiated the proposed amendment on November 19, 2013 through Blue Sheet No. 20130964.
- Florida Statute Section 373.016(4)(a) states that waters in the state should be managed on a regional basis.
- Florida Statute 373.217 gives the Department of Environmental Protection (DEP) or water management districts exclusive authority for requiring permits for water consumption.
- Currently, Lee Plan Map 13 depicts the Irrigation Well Overlay.
- The South Florida Water Management District (SFWMD) currently maintains a comprehensive regulatory program.
- SFWMD has determined that Lee Plan Policy 1.7.10 conflicts with the districts jurisdiction.
- The proposed amendment would remove a redundant water management policy.
- Map 8 identifies Wellfield Protection Zones for permitted wells in the County.
- Lee County Land Development Code Chapter 14 Article III addresses contamination of potable water supplies through the creation of Wellfield Protection Zones. These zones are defined by the transit time of water within the aquifer.
- The Florida DEP is requiring Lee County to expand Aquifer Storage and Recovery (ASR) well protection zones.
- New public water supply production wells have been installed, and Map 8 should also be updated to include these new wells and provide more accurate location of existing wells.

C. BACKGROUND INFORMATION

Lee Plan Map 13, The Irrigation Well Overlay, depicts the area identified in Policy 1.7.10 as a critical area for future potable water supply. The Overlay originally depicted a large area in the southern portion of the County including areas in Bonita Springs. The incorporation of the City of Bonita Springs and the subsequent removal of regulations specific to the area of the city from the Lee Plan resulted in the current extent of Map 13. The Overlay currently covers portions of the Southeast Lee County and Estero Planning Communities.

Lee Plan Map 8, currently titled “Cones of Influence,” indicates the travel time of groundwater surrounding various wellfields within the County and establishes protection from certain land uses within these zones. Florida DEP is currently requiring Lee County

Utilities to expand ASR protection zones from 500 to 2,640 feet. These zones are not depicted on the current Map 8.

PART II - STAFF ANALYSIS

A. STAFF DISCUSSION

INTRODUCTION

In a letter dated October 16, 2013 (see Attachment #1), the South Florida Water Management District (SFWMD) identified provisions in the Lee Plan that do not conform to Florida Statutes. This letter provides that these provisions intrude on the jurisdiction of the SFWMD in regards to the permitting of irrigation wells in the Lower Tamiami Aquifer. The main source of this conflict is Policy 1.7.10 which regulates permits in the Irrigation Well Overlay identified in Lee Plan Map 13. To remove this conflict, the SFWMD has requested that Policy 1.7.10 be deleted. This will require deletion of references to Policy 1.7.10 in two other policies, Policy 2.4.2 and 54.1.9. Lee Plan Map 13 will also be deleted as it will be unnecessary without Policy 1.7.10.

Staff is also taking this opportunity to update Lee Plan Map 8 to more accurately identify the purpose of the map. The map should be named "Wellfield Protection Zones." Map 8 needs to be updated for several reasons. New public water supply production wells have been installed, and the map should also be updated to include these new wells. In addition, due to recent groundwater modeling FDEP is currently requiring Lee County Utilities to expand the ASR well protection zones from 500 feet to 2,640 feet. These ASR boundaries are depicted on proposed Map 8.

PROPOSED CHANGES

The amendment proposes the deletion of Policy 1.7.10. This will remove a conflict between the Lee Plan and the SFWMD in the Estero area. Lee Plan Policies 1.7.11 through 1.7.15 will be renumbered. Lee Plan Policies 2.4.2 and 54.1.9 both contain references to Policy 1.7.10. The references will be deleted. Policies 2.4.3 and 2.4.4 will be renumbered as will Policies 54.1.10 through 54.1.12.

Another proposed change is the deletion of Lee Plan Map 13, the Irrigation Well Overlay. The deletion of Policy 1.7.10 will render this map irrelevant and it should be removed from the Lee Plan.

The last proposed change is to adopt an updated version of Lee Plan Map 8, Cones of Influence, in order to include the latest data from the Division of Utilities and rename the map as previously discussed.

The changes to the relevant Lee Policies are shown here in strikethrough/underline format:

~~**POLICY 1.7.10:** The Irrigation Well overlay in Bonita Springs (as defined in this plan) is hereby declared a critical area for future potable water supply, based on evidence that withdrawals from the main potable aquifer, the lower Tamiami aquifer, are approaching or exceeding the maximum safe yield. In response to this designation, the county will maintain current regulations to provide that new irrigation well permits in the Irrigation Well overlay may not utilize the main potable water source. For the purposes of this plan, the boundaries of the Irrigation Well overlay are indicated on Map 13 of the Future Land Use Map series. (Also see Policy 54.1.9 for new permit requirements for wells in Lehigh Acres, and Policy 2.4.2 for special requirements for amendments to the Future Land Use Map). (Amended by Ordinance No. 94-30, 00-22, Amended and Relocated by Ordinance No. 02-02)~~

Lee Plan policies 1.7.11 through 1.7.15 will be renumbered to reflect this deletion.

~~**POLICY 2.4.2:** All proposed changes to the Future Land Use Map in critical areas for future potable water supply (Bonita Springs as described in Policy 1.7.10; Lehigh Acres as described in Policy 54.1.9; and all land in the Density Reduction/ Groundwater Resource land use category) will be subject to a special review by the staff of Lee County. This review will analyze the proposed land uses to determine the short-term and long-term availability of irrigation and domestic water sources, and will assess whether the proposed land uses would cause any significant impact on present or future water resources. If the Board of County Commissioners wishes to approve any such changes to the Future Land Use Map, it must make a formal finding that no significant impacts on present or future water resources will result from the change. (Amended by Ordinance No. 92-47, 94-30, 00-22, 02-02)~~

~~**POLICY 54.1.9:** Lehigh Acres (as defined by outer boundaries of its Privately Funded Infrastructure overlay on the Future Land Use Map) is hereby declared a critical area for future potable water supply due to fluctuating water levels in the Sandstone aquifer. In response to this designation, the county will amend current regulations to provide that new wells in Lehigh Acres must be constructed to accommodate submersible pumps. (Also see Policy 1.7.10 for new permit requirements for irrigation wells in Bonita Springs, and Policy 2.4.2 for special requirements for amendments to the Future Land Use Map.) (Amended by Ordinance No. 94-30, 00-22, 02-02)~~

Deletion of Policy 1.7.10 and references to it will bring the Lee Plan into conformance with Florida Statute 373.106(4)(a). Deleting Lee Plan Map 13 will remove an unnecessary provision from the Lee Plan. Adoption of an updated Lee Plan Map 8 will keep groundwater protection policies current, will more accurately depict existing and new wells, and will now depict ASR well protection zones.

B. STAFF RECOMMENDATION

County staff recommends that the Board of County Commissioners *transmit* the proposed amendment.

**PART III - LOCAL PLANNING AGENCY
REVIEW AND RECOMMENDATION**

DATE OF PUBLIC HEARING: December 11, 2013

A. LOCAL PLANNING AGENCY REVIEW

**B. LOCAL PLANNING AGENCY RECOMMENDATION AND FINDINGS OF
FACT SUMMARY**

1. RECOMMENDATION:

2. BASIS AND RECOMMENDED FINDINGS OF FACT:

C. VOTE:

NOEL ANDRESS	_____
STEVE BRODKIN	_____
WAYNE DALTRY	_____
JIM GREEN	_____
MITCH HUTCHCRAFT	_____
ANN PIERCE	_____
ROGER STRELOW	_____



SOUTH FLORIDA WATER MANAGEMENT DISTRICT

October 16, 2013

Lee Werst
Lee County Natural Resources Management
1500 Monroe Street
Ft. Myers, Florida 33901

LEE COUNTY DIV. OF
NATURAL RESOURCES
OCT 18 2013

RECEIVED

Re: Lee County Comprehensive Plan

Dear Mr. Werst:

Thank you for providing the South Florida Water Management District (District) with the opportunity to review Lee County's proposed changes to Ordinance No. 06-09. As noted in its September 12, 2013 letter, the District requested deletion of the renumbered Section 8.3.2(16), previously Section 9.3.2(16), purporting to regulate the use of water for irrigation from the Lower Tamiami aquifer, as such regulation is preempted to the District.

It has come to the District's attention that Policy 1.7.10 of the Lee County Comprehensive Plan ("Lee Plan") also intrudes into the District's exclusive jurisdiction. The Policy states:

The Irrigation Well overlay in Bonita Springs (as defined in this plan) is hereby declared a critical area for future potable water supply, based on evidence that withdrawals from the main potable aquifer, the lower Tamiami aquifer, are approaching or exceeding the maximum safe yield. In response to this designation, the county will maintain current regulations to provide that new irrigation well permits in the Irrigation Well overlay may not utilize the main potable water source. For the purposes of this plan, the boundaries of the Irrigation Well overlay are indicated on Map 13 of the Future Land Use Map series.

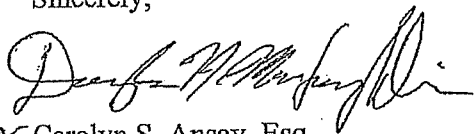
The Legislature stated that the waters in the state should be managed on a statewide and regional basis. See § 373.016(4)(a), Fla. Stat. (2013). To effectuate this goal, the Legislature enacted Section 373.217, Fla. Stat., giving the Department of Environmental Protection or water management districts exclusive authority for requiring permits for the consumptive use of water under Part II of Chapter 373, F.S. The law also superseded any existing state or local laws that conflicted with the Part II of Chapter 373, F.S., and preempted the enactment of future regulations.

The District adopted a comprehensive regulatory program. The Consumptive Use Permitting (CUP) Program protects the water resources from harm. § 373.216, Fla. Stat. (2013). All CUPs issued have been technically evaluated to determine if the water use has the potential to cause harm to the resources of the area. To further protect the Lower Tamiami aquifer, the District has adopted a minimum level for the aquifer. Fla. Admin. Code R. 40E-8.331. To prevent the

aquifer from reaching the minimum level, maximum developable limits have been set. See Section 3.2.4 of the Basis of Review for Water Use Permits within the South Florida Water Management District. Taken together, these rules and criteria are sufficient to accomplish the goals espoused by the Lee Plan.

Therefore, the District respectfully requests Lee County remove Policy 1.7.10 of the Lee Plan which purports to prohibit the construction of irrigation wells into the Lower Tamiami aquifer within a portion of Bonita Springs. If you have any questions, feel free to contact Jennifer Bokankowitz at 561-682-2258, or jbokanko@sfwmd.gov

Sincerely,


for Carolyn S. Ansay, Esq.
General Counsel

CSA/jdb

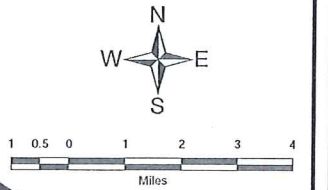
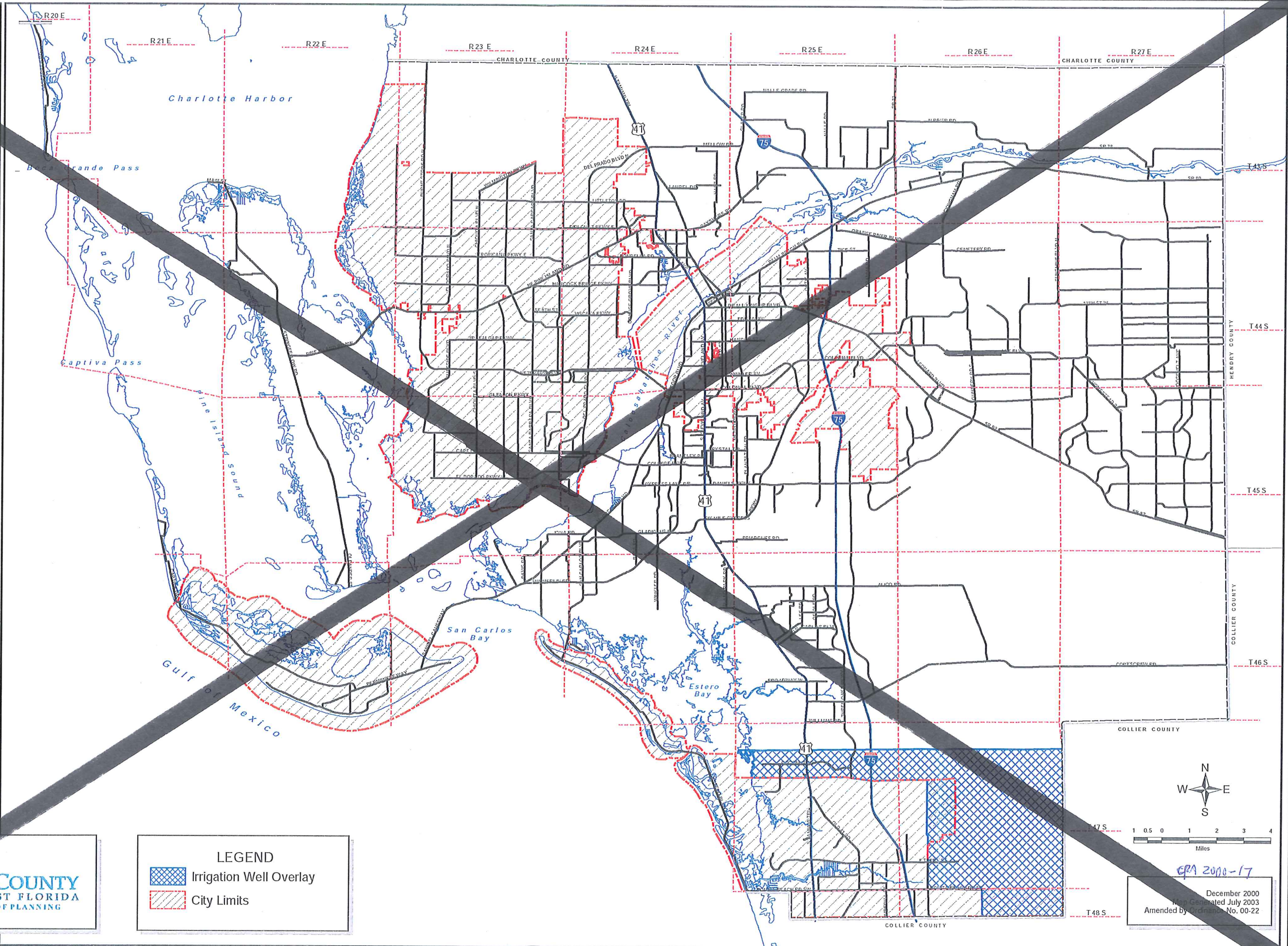
IRRIGATION WELL OVERLAY

(Lee Plan Map 13)



LEGEND

- Irrigation Well Overlay
- City Limits

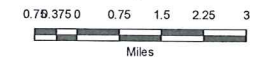
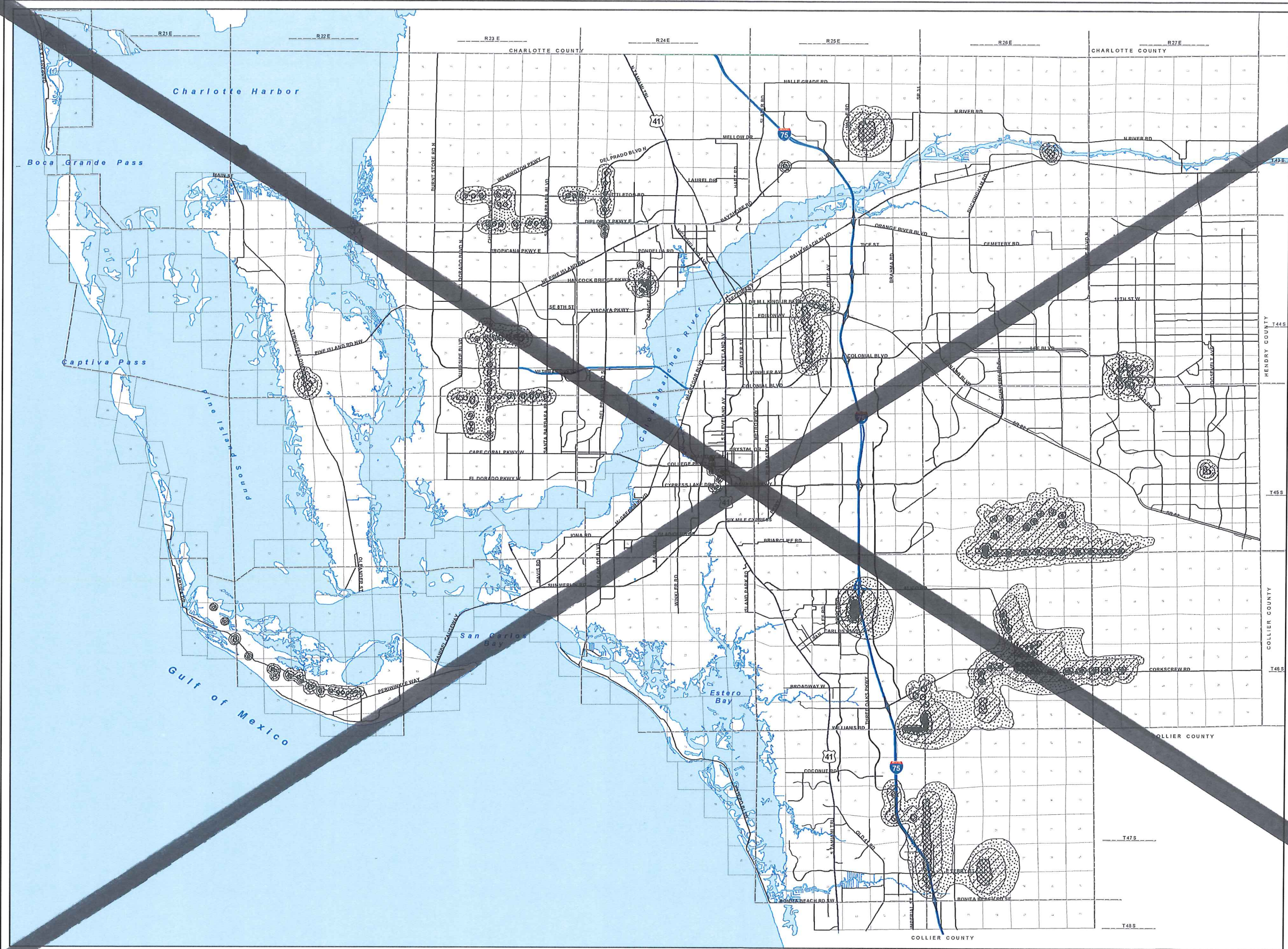


December 2000
Map Generated July 2003
Amended by Ordinance No. 00-22

CONES OF INFLUENCE

Travel Times

- * Permitted Wells
- 6-Months
- ▨ 1-Year
- ▧ 5-Years
- ▩ 10-Years



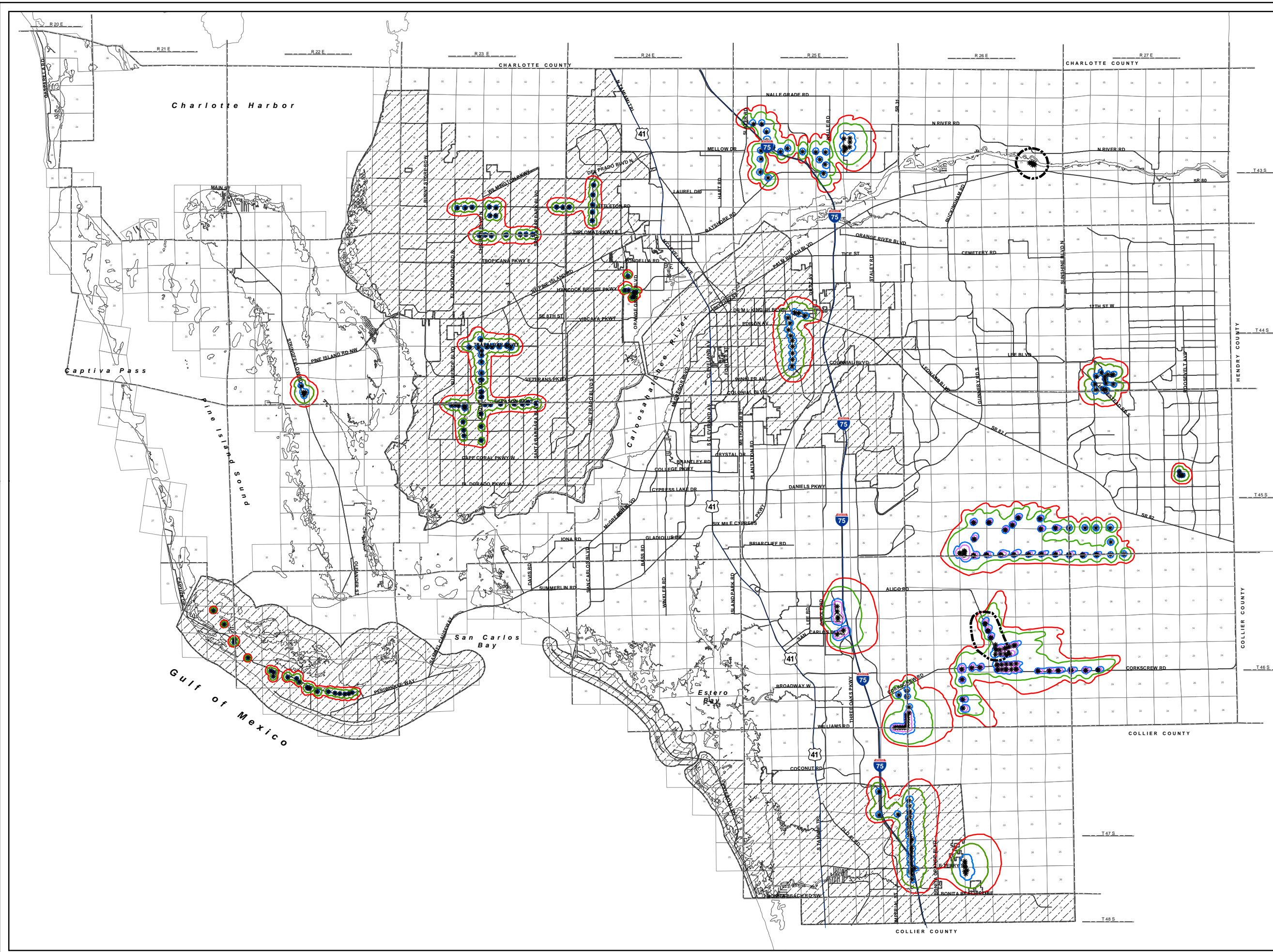
Map Generated: January 2008
 City Limits current to date of map generation
 Last Amended: August 13, 2007
 Amended by Ordinance No. 07-13

Wellfield Protection Zones

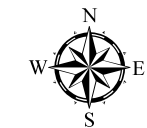
COMPOSITE ISO-TRAVEL TIME MAP

Travel Time

- 6-MONTHS
- 1-YEAR
- 5-YEARS
- 10-YEARS
- ASR PROTECTION ZONE
- * Permitted Well
- City Limits



LEE COUNTY
SOUTHWEST FLORIDA
DIVISION OF PLANNING



Map Generated: November 2013
City Limits current to date of map generation

Last Amended: August 13, 2007
Amended by Ordinance No. 07-13