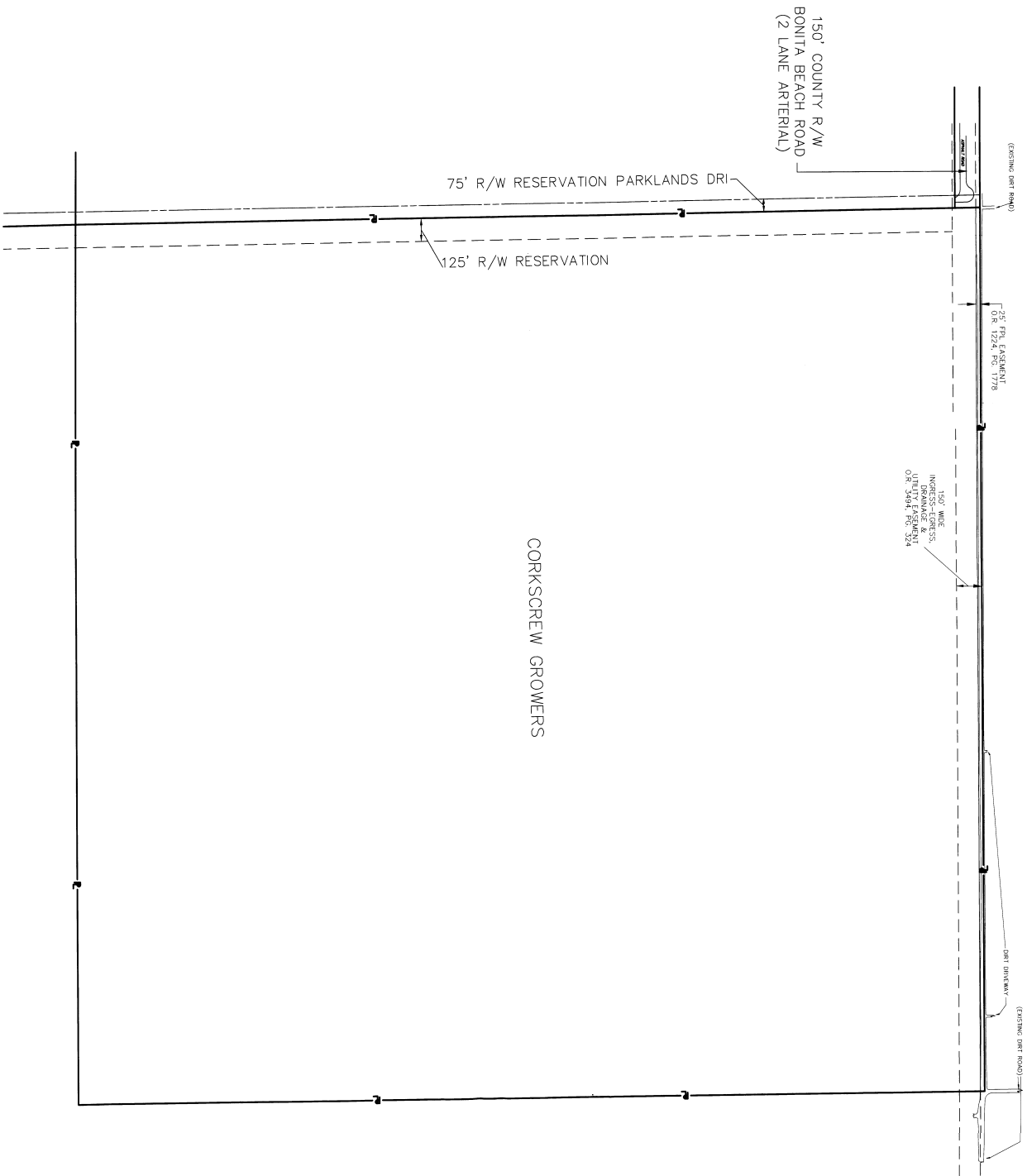


Maps for

Case #: *D CI 2003-00005*



RECEIVED
MAR 03 2003
COMMUNITY DEVELOPMENT
DCI 2003-00005

HORSESHOE DEVELOPMENTS, INC.

3185 HORSESHOE DRIVE SOUTH
DADE COUNTY, FL 33155
(941) 548-8310

Bank's Engineering, Inc.

Professional Engineers, Planners & Land Surveyors
Engineering License Number: ES-000464 - Surveying License Number: LS-6690
10501 SW 4th Avenue, Suite 100, Fort Lauderdale, FL 33304
Phone: (954) 579-2800 Fax: (954) 579-2802
1144 NW 10th Avenue, Suite 100, Fort Lauderdale, FL 33304
Phone: (954) 579-2800 Fax: (954) 579-2802

CORKSCREW GROWERS SECTION 3 R.P.D.

ROADS & EASEMENTS
LEE COUNTY, FLORIDA

DATE	PROJECT	DRAWING	DESIGN	DRAWN	CHECKED	SCALE	SHEET	OF	FILE NO. (S-1-10)
02-27-03	1360	EASE	JCA	JCA	DRU	1" = 300'	1	1	3-485-286

SECTION 3 BOUNDARY LINE

740

214

214

740

214

740

214

FLUCCS CODES:

214 ACTIVE ROW CROP (WITH ASSOCIATED AGRICULTURAL DITCHES, BERMS, AND PRIMITIVE DIRT ROADS)
740 DISTURBED LAND (FOR AGRICULTURAL PURPOSES)

PREPARED FOR:

HORSESHOE DEVELOPMENTS, INC.

3185 HORSESHOE DRIVE
NAPLES, FL 34104
(941) 649-6310

[illegible]

Wabash Engineering, Inc.

Professional Engineers, Planners & Land Surveyors
Engineering License Number: EB-0006-669 - Surveyors License Number: LA 6690
6640 WILLOW PARK DRIVE - SUITE 204 MAZES, FLORIDA 34109
PHONE: (941)597-2061 FAX: (941)597-3002

10501 SW MALE COMPRESS PARKWAY - SUITE 101 FORT MYERS, FLORIDA 33912
PHONE: (941)935-5400 FAX: (941)935-2523

1144 TALLWEAST ROAD - SUITE 115 SARASOTA, FLORIDA 34243
PHONE: (941)566-1618 FAX: (941)566-6918

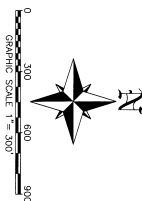
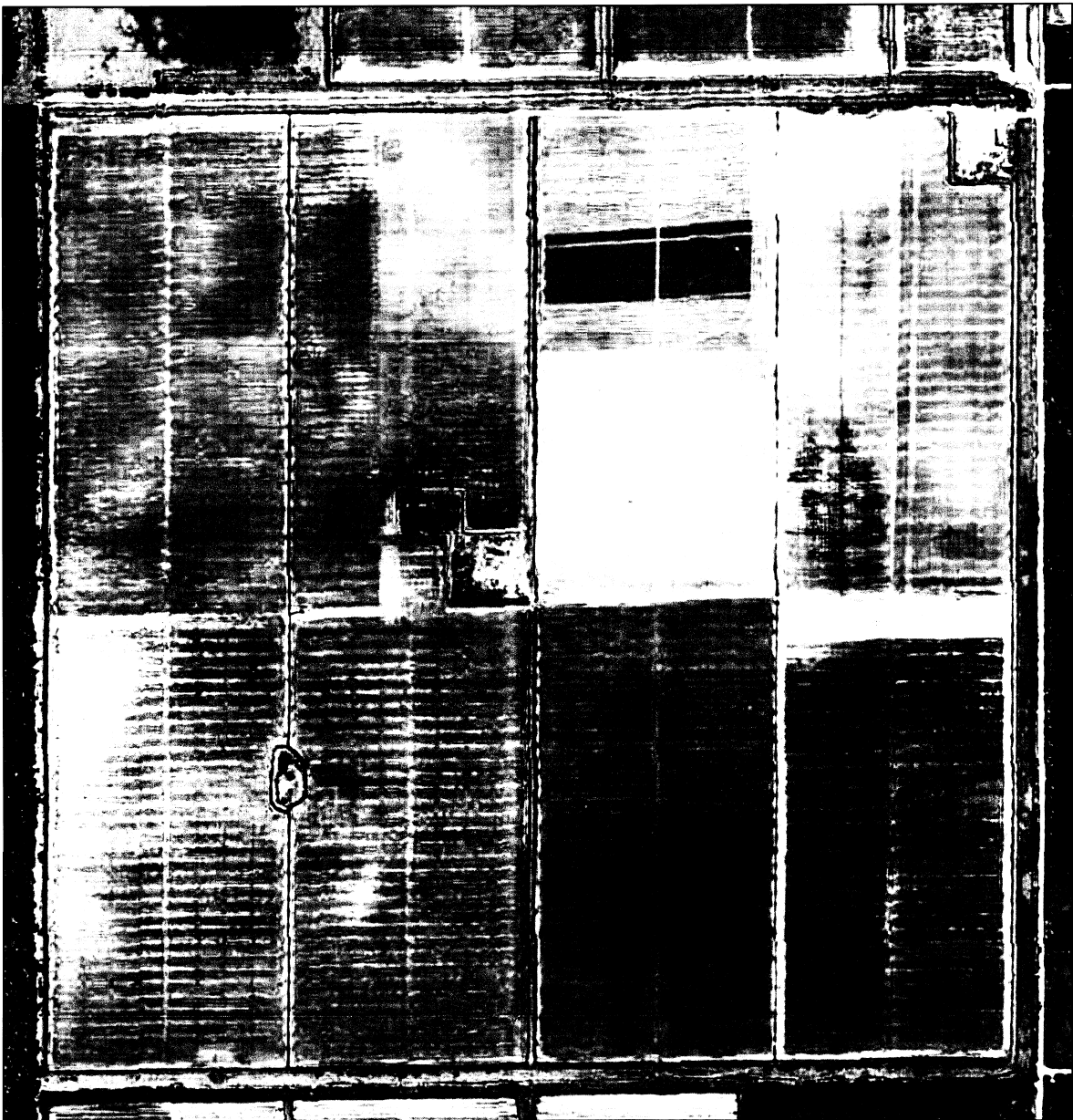
CORKSCREW GROWERS SECTION 3 R.P.D.

LEE COUNTY, FLORIDA

DATE	PRODUCT	DRAINING	DESIGN	CHECKED	SCALE	SHEET	OF	FILE NO. (S-1-R)
02-27-03	1360	FLUCCS	DRU	DRU	$i = 400'$	1	1	3-485-26E

COMMUNITY DEVELOPMENT
DCI 2003-00005

RECEIVED
MAY 03 2003



RECEIVED
 MAR 23 2003
 COMMUNITY DEVELOPMENT
 UG 2003-00005

PREPARED FOR:
HORSESHOE DEVELOPMENTS, INC.

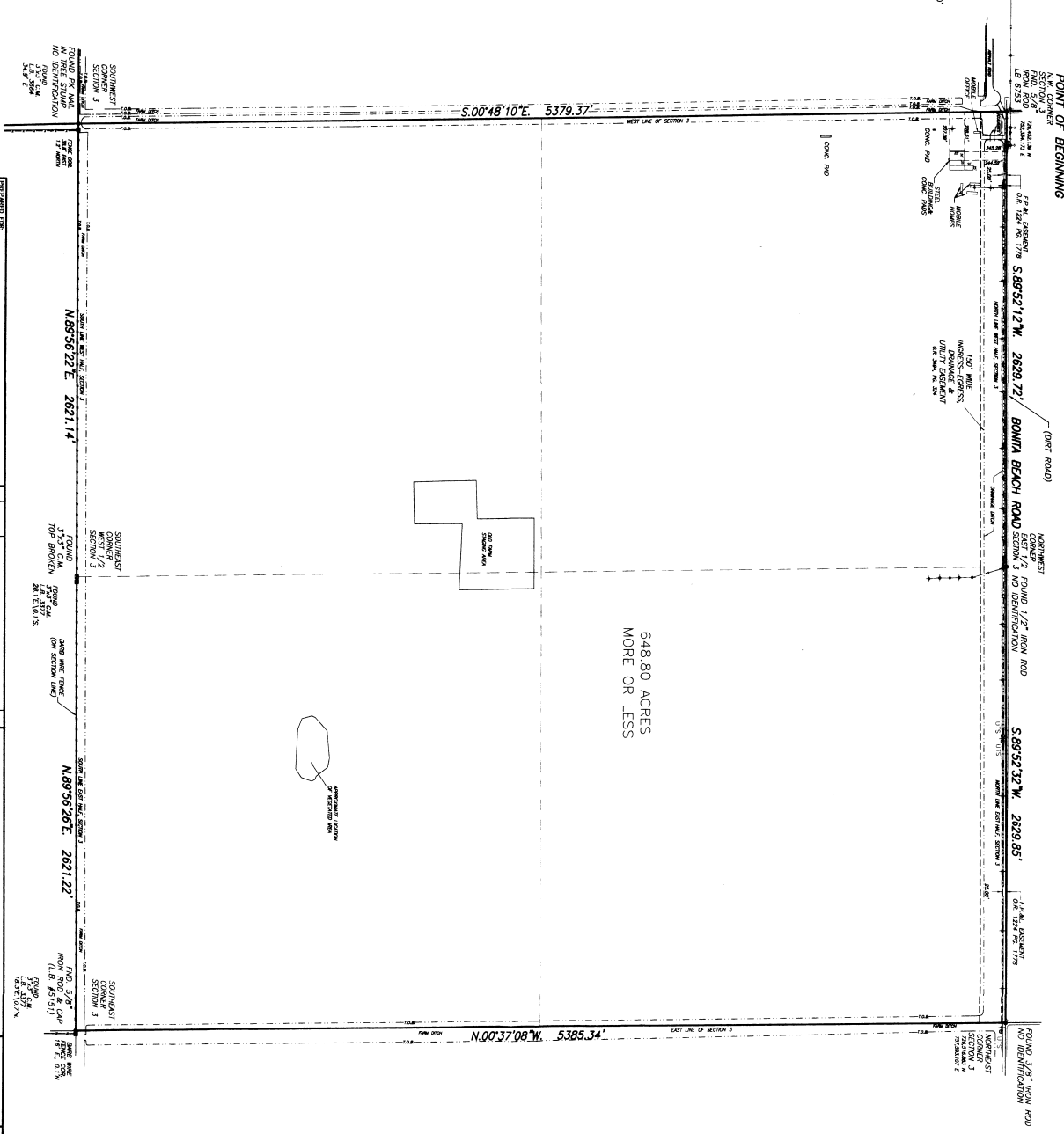
3185 HORSESHOE DRIVE SOUTH
 JACKSONVILLE, FL 32216
 (904) 644-6310

NO.	DATE	REVISION DESCRIPTION	BY

Thinks Engineering, Inc.
 Professional Engineers, Planners & Land Surveyors
 Engineering License Number: ES-0000463 - Sebring, Llewellyn Norman, II 6690
 10501 SW 4th Avenue, Suite 200, Fort Lauderdale, FL 33309
 PHONE: (954) 597-2087 FAX: (954) 597-5082
 1144 N. University Ave., Suite 110, Ft. Lauderdale, FL 33304
 PHONE: (954) 590-1111 FAX: (954) 590-1111

CORKSCREW GROWERS SECTION 3 R.P.D.
 LEE COUNTY, FLORIDA

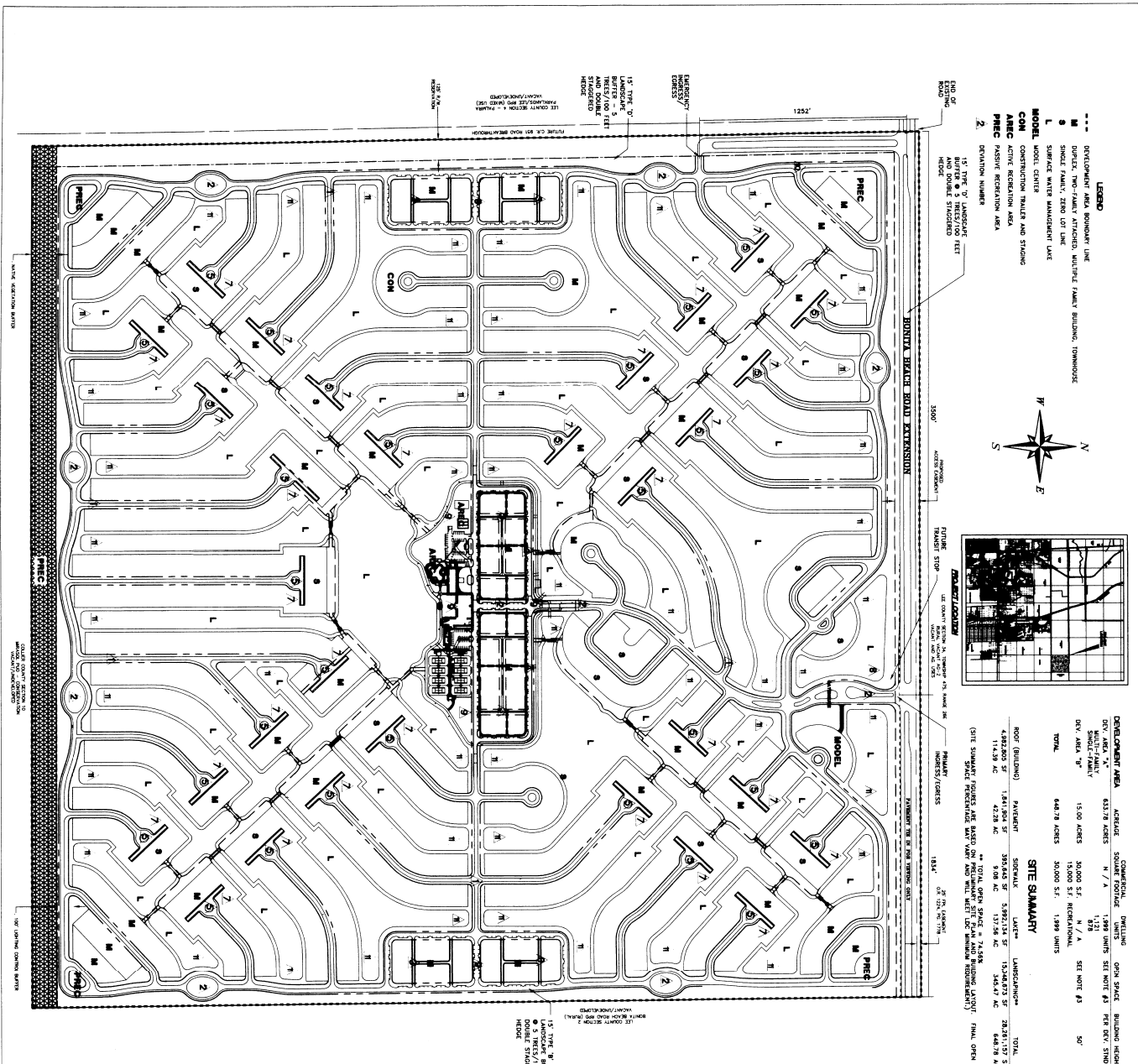
DATE	PROJECT	DRAWING	DESIGN	DRAWN	CHECKED	SCALE	SHEET	OF	FILE NO. (S-I-N)
02-27-03	-1340	AERIAL	JEA	JEA	DBU	1" = 500'	1	1	3-485-28E



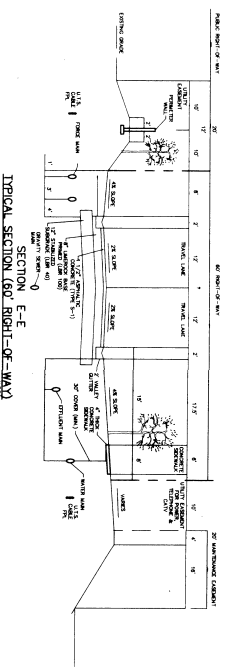
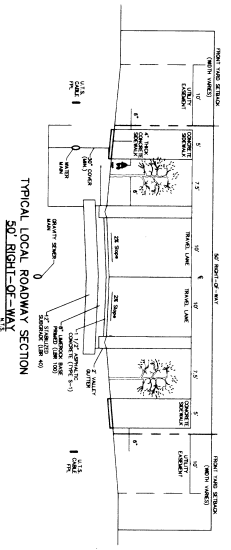
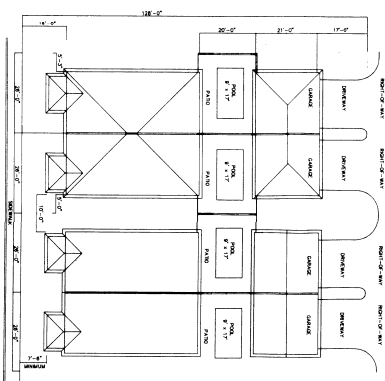
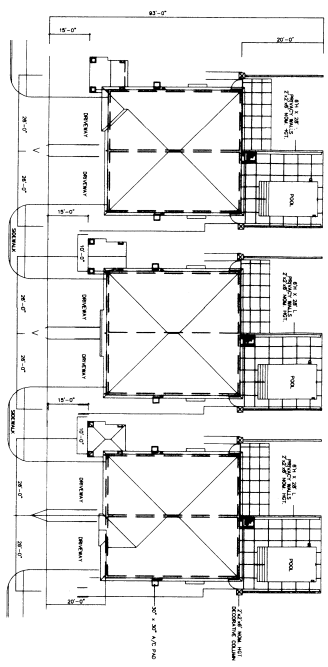
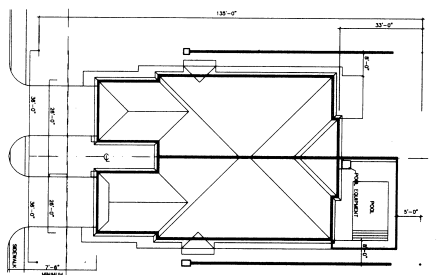
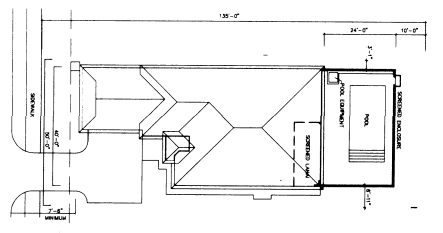
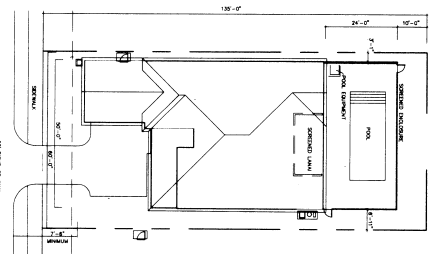
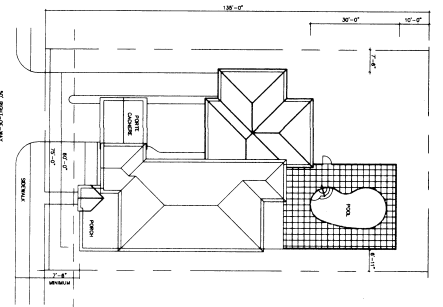
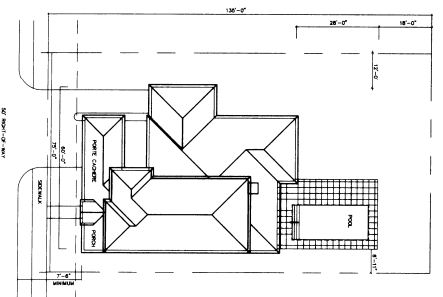
A PARCEL OF LAND LYING IN
SECTION 3, TOWNSHIP 48 SOUTH, RANGE 26 EAST,
LEE COUNTY, FLORIDA

DRAWING NO.	DESIGN TCS	DRAWN TCS	CHECKED TCS	SCALE 1"=300'	SHEET 1
----------------	---------------	--------------	----------------	------------------	------------

- THIS SURVEY WAS PROVIDED WITHOUT BENEFIT OF ABSTRACT OF TITLE AND ALL MATTERS OF TITLE SHOULD BE REFERRED TO AN ATTORNEY AT LAW.



<p>DEVELOPMENT AREA</p> <p>DEV. AREA "A" 63.79 ACRES</p> <p>DEV. AREA "B" 15.00 ACRES</p> <p>DEV. AREA "C" 15.00 ACRES</p> <p>DEV. AREA "D" 15.00 ACRES</p> <p>DEV. AREA "E" 15.00 ACRES</p> <p>DEV. AREA "F" 15.00 ACRES</p> <p>DEV. AREA "G" 15.00 ACRES</p> <p>DEV. AREA "H" 15.00 ACRES</p> <p>DEV. AREA "I" 15.00 ACRES</p> <p>DEV. AREA "J" 15.00 ACRES</p> <p>DEV. AREA "K" 15.00 ACRES</p> <p>DEV. AREA "L" 15.00 ACRES</p> <p>DEV. AREA "M" 15.00 ACRES</p> <p>DEV. AREA "N" 15.00 ACRES</p> <p>DEV. AREA "O" 15.00 ACRES</p> <p>DEV. AREA "P" 15.00 ACRES</p> <p>DEV. AREA "Q" 15.00 ACRES</p> <p>DEV. AREA "R" 15.00 ACRES</p> <p>DEV. AREA "S" 15.00 ACRES</p> <p>DEV. AREA "T" 15.00 ACRES</p> <p>DEV. AREA "U" 15.00 ACRES</p> <p>DEV. AREA "V" 15.00 ACRES</p> <p>DEV. AREA "W" 15.00 ACRES</p> <p>DEV. AREA "X" 15.00 ACRES</p> <p>DEV. AREA "Y" 15.00 ACRES</p> <p>DEV. AREA "Z" 15.00 ACRES</p>	<p>DEVELOPMENT AREA</p> <p>DEV. AREA "A" 63.79 ACRES</p> <p>DEV. AREA "B" 15.00 ACRES</p> <p>DEV. AREA "C" 15.00 ACRES</p> <p>DEV. AREA "D" 15.00 ACRES</p> <p>DEV. AREA "E" 15.00 ACRES</p> <p>DEV. AREA "F" 15.00 ACRES</p> <p>DEV. AREA "G" 15.00 ACRES</p> <p>DEV. AREA "H" 15.00 ACRES</p> <p>DEV. AREA "I" 15.00 ACRES</p> <p>DEV. AREA "J" 15.00 ACRES</p> <p>DEV. AREA "K" 15.00 ACRES</p> <p>DEV. AREA "L" 15.00 ACRES</p> <p>DEV. AREA "M" 15.00 ACRES</p> <p>DEV. AREA "N" 15.00 ACRES</p> <p>DEV. AREA "O" 15.00 ACRES</p> <p>DEV. AREA "P" 15.00 ACRES</p> <p>DEV. AREA "Q" 15.00 ACRES</p> <p>DEV. AREA "R" 15.00 ACRES</p> <p>DEV. AREA "S" 15.00 ACRES</p> <p>DEV. AREA "T" 15.00 ACRES</p> <p>DEV. AREA "U" 15.00 ACRES</p> <p>DEV. AREA "V" 15.00 ACRES</p> <p>DEV. AREA "W" 15.00 ACRES</p> <p>DEV. AREA "X" 15.00 ACRES</p> <p>DEV. AREA "Y" 15.00 ACRES</p> <p>DEV. AREA "Z" 15.00 ACRES</p>	<p>DEVELOPMENT AREA</p> <p>DEV. AREA "A" 63.79 ACRES</p> <p>DEV. AREA "B" 15.00 ACRES</p> <p>DEV. AREA "C" 15.00 ACRES</p> <p>DEV. AREA "D" 15.00 ACRES</p> <p>DEV. AREA "E" 15.00 ACRES</p> <p>DEV. AREA "F" 15.00 ACRES</p> <p>DEV. AREA "G" 15.00 ACRES</p> <p>DEV. AREA "H" 15.00 ACRES</p> <p>DEV. AREA "I" 15.00 ACRES</p> <p>DEV. AREA "J" 15.00 ACRES</p> <p>DEV. AREA "K" 15.00 ACRES</p> <p>DEV. AREA "L" 15.00 ACRES</p> <p>DEV. AREA "M" 15.00 ACRES</p> <p>DEV. AREA "N" 15.00 ACRES</p> <p>DEV. AREA "O" 15.00 ACRES</p> <p>DEV. AREA "P" 15.00 ACRES</p> <p>DEV. AREA "Q" 15.00 ACRES</p> <p>DEV. AREA "R" 15.00 ACRES</p> <p>DEV. AREA "S" 15.00 ACRES</p> <p>DEV. AREA "T" 15.00 ACRES</p> <p>DEV. AREA "U" 15.00 ACRES</p> <p>DEV. AREA "V" 15.00 ACRES</p> <p>DEV. AREA "W" 15.00 ACRES</p> <p>DEV. AREA "X" 15.00 ACRES</p> <p>DEV. AREA "Y" 15.00 ACRES</p> <p>DEV. AREA "Z" 15.00 ACRES</p>	<p>DEVELOPMENT AREA</p> <p>DEV. AREA "A" 63.79 ACRES</p> <p>DEV. AREA "B" 15.00 ACRES</p> <p>DEV. AREA "C" 15.00 ACRES</p> <p>DEV. AREA "D" 15.00 ACRES</p> <p>DEV. AREA "E" 15.00 ACRES</p> <p>DEV. AREA "F" 15.00 ACRES</p> <p>DEV. AREA "G" 15.00 ACRES</p> <p>DEV. AREA "H" 15.00 ACRES</p> <p>DEV. AREA "I" 15.00 ACRES</p> <p>DEV. AREA "J" 15.00 ACRES</p> <p>DEV. AREA "K" 15.00 ACRES</p> <p>DEV. AREA "L" 15.00 ACRES</p> <p>DEV. AREA "M" 15.00 ACRES</p> <p>DEV. AREA "N" 15.00 ACRES</p> <p>DEV. AREA "O" 15.00 ACRES</p> <p>DEV. AREA "P" 15.00 ACRES</p> <p>DEV. AREA "Q" 15.00 ACRES</p> <p>DEV. AREA "R" 15.00 ACRES</p> <p>DEV. AREA "S" 15.00 ACRES</p> <p>DEV. AREA "T" 15.00 ACRES</p> <p>DEV. AREA "U" 15.00 ACRES</p> <p>DEV. AREA "V" 15.00 ACRES</p> <p>DEV. AREA "W" 15.00 ACRES</p> <p>DEV. AREA "X" 15.00 ACRES</p> <p>DEV. AREA "Y" 15.00 ACRES</p> <p>DEV. AREA "Z" 15.00 ACRES</p>	<p>DEVELOPMENT AREA</p> <p>DEV. AREA "A" 63.79 ACRES</p> <p>DEV. AREA "B" 15.00 ACRES</p> <p>DEV. AREA "C" 15.00 ACRES</p> <p>DEV. AREA "D" 15.00 ACRES</p> <p>DEV. AREA "E" 15.00 ACRES</p> <p>DEV. AREA "F" 15.00 ACRES</p> <p>DEV. AREA "G" 15.00 ACRES</p> <p>DEV. AREA "H" 15.00 ACRES</p> <p>DEV. AREA "I" 15.00 ACRES</p> <p>DEV. AREA "J" 15.00 ACRES</p> <p>DEV. AREA "K" 15.00 ACRES</p> <p>DEV. AREA "L" 15.00 ACRES</p> <p>DEV. AREA "M" 15.00 ACRES</p> <p>DEV. AREA "N" 15.00 ACRES</p> <p>DEV. AREA "O" 15.00 ACRES</p> <p>DEV. AREA "P" 15.00 ACRES</p> <p>DEV. AREA "Q" 15.00 ACRES</p> <p>DEV. AREA "R" 15.00 ACRES</p> <p>DEV. AREA "S" 15.00 ACRES</p> <p>DEV. AREA "T" 15.00 ACRES</p> <p>DEV. AREA "U" 15.00 ACRES</p> <p>DEV. AREA "V" 15.00 ACRES</p> <p>DEV. AREA "W" 15.00 ACRES</p> <p>DEV. AREA "X" 15.00 ACRES</p> <p>DEV. AREA "Y" 15.00 ACRES</p> <p>DEV. AREA "Z" 15.00 ACRES</p>
--	--	--	--	--



APPROVED
 Master Concept Plan
 Date: 02-09
 Page: 3 of 3
 Subject: Lee County Section 3
 Corkscrew Growers
 City of Seville Springs
 Zoning: C-1
 DIT 2003-00005
 RECEIVED
 MAR 03 2003
 ZONING COUNCIL
 RWA, INC.
 FEB 28 2003

DATE: 11-2-2003	SEC: TRP	RCE: 5	APP: 246	CLIENT: HORSESHOE DEVELOPMENTS, INC.	PROJECT: LEE COUNTY SECTION 3 CORKSCREW GROWERS	RWA CONSULTING Engineers, Surveyors & Mappers Planners, Project Managers 3555 North Horseshoe Drive, Suite 270, Naples, Florida 34104 (239) 546-1559 FAX: (239) 646-7556
PROJECT NO: 02-000A.00	SCALE: AS SHOWN	DRAWN: F.A.I.	CHECKED: E.V.	TITLE: PROTOTYPICAL BUILDINGS AND RIGHT-OF-WAY CROSS SECTIONS		
FILE NO: 20030004						
SHEET NUMBER: 5 OF 5						