



Maps for

Case #: DT2004-00080

FRONT OF RESERVATION

CAPE CORAL
 UNIT 86
 P.B. 24 POS. 144-161

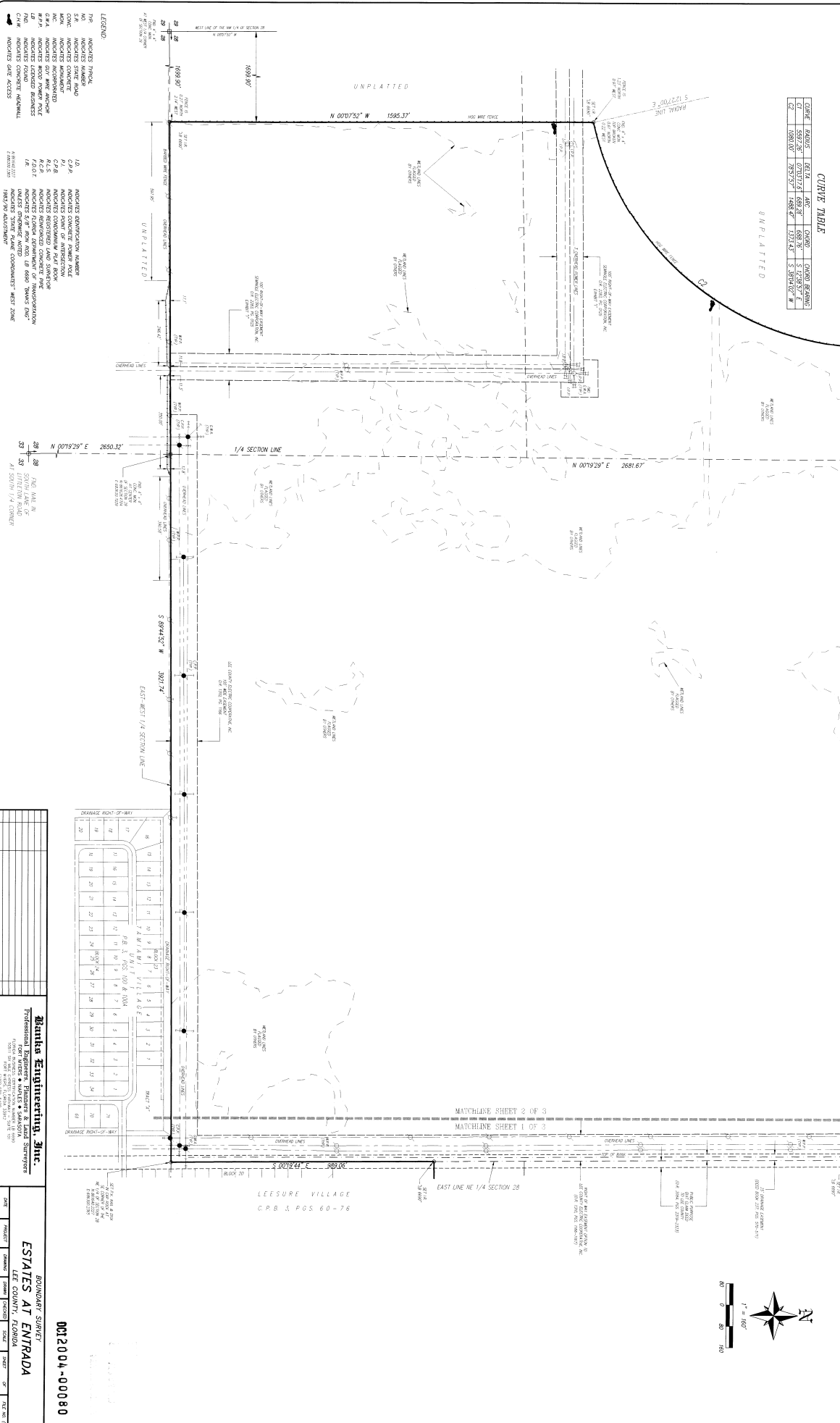
SECTION 27 & 28, TOWNSHIP 43 SOUTH, RANGE 24 EAST,
 LEE COUNTY, FLORIDA

SURVEY PLAT

OF
 A PARCEL OF LAND LYING IN
 SECTION 27 & 28, TOWNSHIP 43 SOUTH, RANGE 24 EAST,
 LEE COUNTY, FLORIDA

CURVE TABLE

CHORD	ARC	ANGLE	CHORD BEARING
1500.00'	75°57'27"	1488.97'	S 34°54'02" W
1500.00'	75°57'27"	1488.97'	S 34°54'02" W



- LEGEND**
- 1.0 UNPLATTED
 - 2.0 UNPLATTED
 - 3.0 UNPLATTED
 - 4.0 UNPLATTED
 - 5.0 UNPLATTED
 - 6.0 UNPLATTED
 - 7.0 UNPLATTED
 - 8.0 UNPLATTED
 - 9.0 UNPLATTED
 - 10.0 UNPLATTED
 - 11.0 UNPLATTED
 - 12.0 UNPLATTED
 - 13.0 UNPLATTED
 - 14.0 UNPLATTED
 - 15.0 UNPLATTED
 - 16.0 UNPLATTED
 - 17.0 UNPLATTED
 - 18.0 UNPLATTED
 - 19.0 UNPLATTED
 - 20.0 UNPLATTED
 - 21.0 UNPLATTED
 - 22.0 UNPLATTED
 - 23.0 UNPLATTED
 - 24.0 UNPLATTED
 - 25.0 UNPLATTED
 - 26.0 UNPLATTED
 - 27.0 UNPLATTED
 - 28.0 UNPLATTED
 - 29.0 UNPLATTED
 - 30.0 UNPLATTED
 - 31.0 UNPLATTED
 - 32.0 UNPLATTED
 - 33.0 UNPLATTED
 - 34.0 UNPLATTED
 - 35.0 UNPLATTED
 - 36.0 UNPLATTED
 - 37.0 UNPLATTED
 - 38.0 UNPLATTED
 - 39.0 UNPLATTED
 - 40.0 UNPLATTED
 - 41.0 UNPLATTED
 - 42.0 UNPLATTED
 - 43.0 UNPLATTED
 - 44.0 UNPLATTED
 - 45.0 UNPLATTED
 - 46.0 UNPLATTED
 - 47.0 UNPLATTED
 - 48.0 UNPLATTED
 - 49.0 UNPLATTED
 - 50.0 UNPLATTED
 - 51.0 UNPLATTED
 - 52.0 UNPLATTED
 - 53.0 UNPLATTED
 - 54.0 UNPLATTED
 - 55.0 UNPLATTED
 - 56.0 UNPLATTED
 - 57.0 UNPLATTED
 - 58.0 UNPLATTED
 - 59.0 UNPLATTED
 - 60.0 UNPLATTED
 - 61.0 UNPLATTED
 - 62.0 UNPLATTED
 - 63.0 UNPLATTED
 - 64.0 UNPLATTED
 - 65.0 UNPLATTED
 - 66.0 UNPLATTED
 - 67.0 UNPLATTED
 - 68.0 UNPLATTED
 - 69.0 UNPLATTED
 - 70.0 UNPLATTED
 - 71.0 UNPLATTED
 - 72.0 UNPLATTED
 - 73.0 UNPLATTED
 - 74.0 UNPLATTED
 - 75.0 UNPLATTED
 - 76.0 UNPLATTED
 - 77.0 UNPLATTED
 - 78.0 UNPLATTED
 - 79.0 UNPLATTED
 - 80.0 UNPLATTED
 - 81.0 UNPLATTED
 - 82.0 UNPLATTED
 - 83.0 UNPLATTED
 - 84.0 UNPLATTED
 - 85.0 UNPLATTED
 - 86.0 UNPLATTED
 - 87.0 UNPLATTED
 - 88.0 UNPLATTED
 - 89.0 UNPLATTED
 - 90.0 UNPLATTED
 - 91.0 UNPLATTED
 - 92.0 UNPLATTED
 - 93.0 UNPLATTED
 - 94.0 UNPLATTED
 - 95.0 UNPLATTED
 - 96.0 UNPLATTED
 - 97.0 UNPLATTED
 - 98.0 UNPLATTED
 - 99.0 UNPLATTED
 - 100.0 UNPLATTED

NO.	DATE	REVISION DESCRIPTION	BY

Banka Engineering, Inc.
 Professional Engineers, Planners & Land Surveyors
 10001 W. US HWY 90, SUITE 100
 FORT MYERS, FLORIDA 33907
 (888) 888-8888

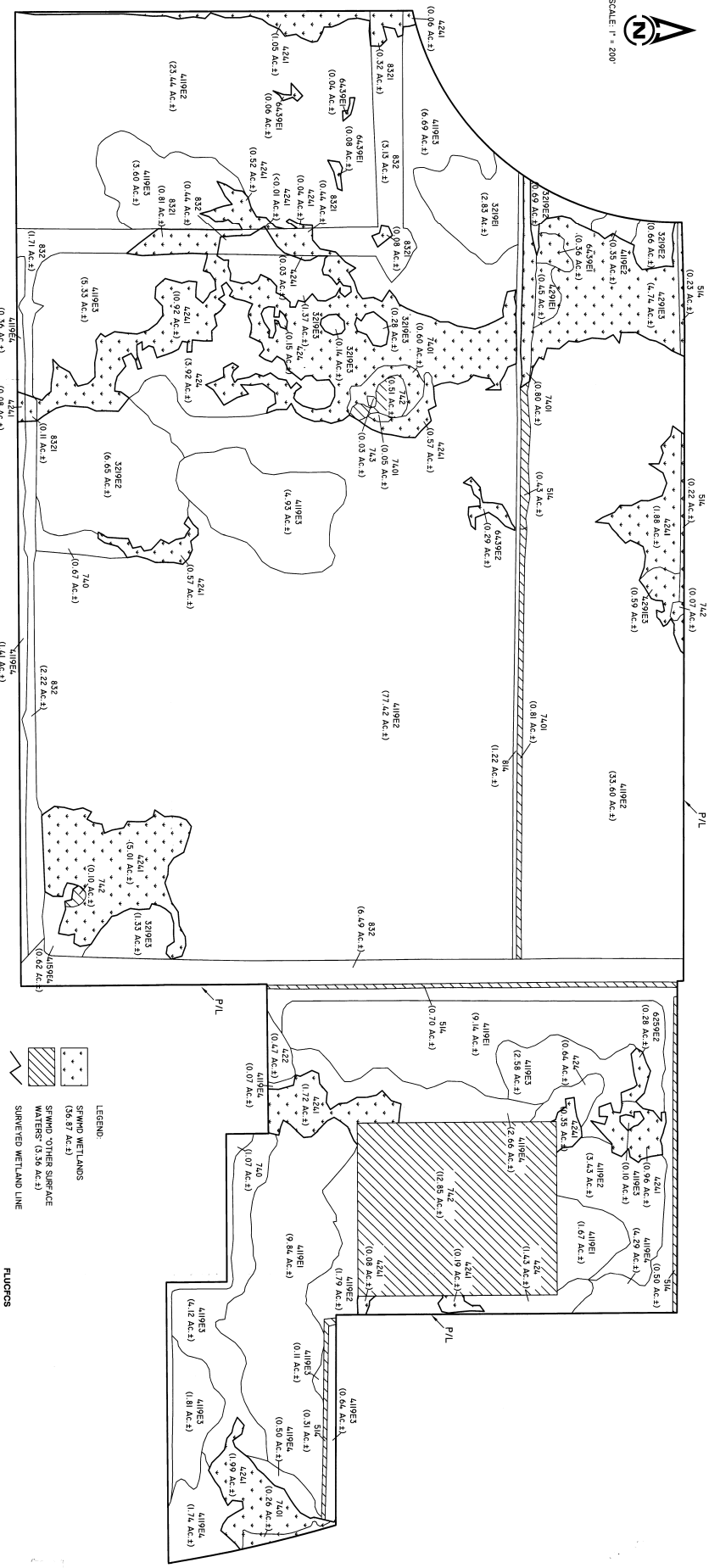
BOUNDARY SURVEY
ESTATES AT ENTRADA
 LEE COUNTY, FLORIDA

DATE	PROJECT	DRAWN	CHECKED	SCALE	SHEET	TOTAL SHEETS	DATE
7-14-09	3044				2	2	7-28-09

0012004-00080



SCALE: 1" = 200'



LEGEND:

- SPAWNING WETLANDS (56.87 AC.±)
- SWAMP OTHER SURFACE WATERS (3.59 AC.±)
- SURVEILLED WETLAND LINE

NOTES:

FLUCFCS LINES ESTIMATED FROM 1"=200' AERIAL PHOTOGRAPHS AND LOCAL ON-BOY APPROPRIATES.

FLUCFCS PER FLORIDA LAND USE COVER AND FORMS CLASSIFICATION SYSTEM (FLUCFCS) (9/30/1979).

PROPERTY BOUNDARY AND WETLAND LINES PER BANKS ENGINEERING, INC. DATED 10/17/04.

WETLAND LINES REVIEWED AND APPROVED IN THE FIELD BY SPWMD STAFF ON JULY 22, 2004.

FLUCFCS CODE	DESCRIPTION	ACRES	% OF TOTAL
3209 E2	SPRAWNED (25-49% EXOTICS)	8.09	2.7%
3219 E3	PALMETTO PRAMIE, DISTURBED (50-75% EXOTICS)	3.12	1.1%
4119 E1	PINE FLATWOODS, DISTURBED (24-49% EXOTICS)	20.06	7.1%
4119 E2	PINE FLATWOODS, DISTURBED (24-49% EXOTICS)	140.04	47.8%
4119 E3	PINE FLATWOODS, DISTURBED (24-49% EXOTICS)	25.91	8.9%
4119 E4	PINE FLATWOODS, DISTURBED (24-49% EXOTICS)	1.08	0.4%
4199 E4	PINE, DISTURBED (75-100% EXOTICS)	0.77	0.3%
424	BRADLIAN PEPPER	6.14	2.1%
4241	MELALEUCA	20.02	6.9%
4241 E1	MAXIMILIAN WILLOW, HYDRIC (50-75% EXOTICS)	0.55	0.2%
4241 E2	MAXIMILIAN WILLOW, HYDRIC (50-75% EXOTICS)	2.29	0.8%
4241 E3	MAXIMILIAN WILLOW, HYDRIC (50-75% EXOTICS)	0.28	0.1%
4241 E4	MAXIMILIAN WILLOW, HYDRIC (50-75% EXOTICS)	0.54	0.2%
4241 E5	MAXIMILIAN WILLOW, HYDRIC (50-75% EXOTICS)	0.23	0.1%
4241 E6	MAXIMILIAN WILLOW, HYDRIC (50-75% EXOTICS)	0.23	0.1%
4241 E7	MAXIMILIAN WILLOW, HYDRIC (50-75% EXOTICS)	0.23	0.1%
4241 E8	MAXIMILIAN WILLOW, HYDRIC (50-75% EXOTICS)	0.23	0.1%
4241 E9	MAXIMILIAN WILLOW, HYDRIC (50-75% EXOTICS)	0.23	0.1%
4241 E10	MAXIMILIAN WILLOW, HYDRIC (50-75% EXOTICS)	0.23	0.1%
4241 E11	MAXIMILIAN WILLOW, HYDRIC (50-75% EXOTICS)	0.23	0.1%
4241 E12	MAXIMILIAN WILLOW, HYDRIC (50-75% EXOTICS)	0.23	0.1%
4241 E13	MAXIMILIAN WILLOW, HYDRIC (50-75% EXOTICS)	0.23	0.1%
4241 E14	MAXIMILIAN WILLOW, HYDRIC (50-75% EXOTICS)	0.23	0.1%
4241 E15	MAXIMILIAN WILLOW, HYDRIC (50-75% EXOTICS)	0.23	0.1%
4241 E16	MAXIMILIAN WILLOW, HYDRIC (50-75% EXOTICS)	0.23	0.1%
4241 E17	MAXIMILIAN WILLOW, HYDRIC (50-75% EXOTICS)	0.23	0.1%
4241 E18	MAXIMILIAN WILLOW, HYDRIC (50-75% EXOTICS)	0.23	0.1%
4241 E19	MAXIMILIAN WILLOW, HYDRIC (50-75% EXOTICS)	0.23	0.1%
4241 E20	MAXIMILIAN WILLOW, HYDRIC (50-75% EXOTICS)	0.23	0.1%
4241 E21	MAXIMILIAN WILLOW, HYDRIC (50-75% EXOTICS)	0.23	0.1%
4241 E22	MAXIMILIAN WILLOW, HYDRIC (50-75% EXOTICS)	0.23	0.1%
4241 E23	MAXIMILIAN WILLOW, HYDRIC (50-75% EXOTICS)	0.23	0.1%
4241 E24	MAXIMILIAN WILLOW, HYDRIC (50-75% EXOTICS)	0.23	0.1%
4241 E25	MAXIMILIAN WILLOW, HYDRIC (50-75% EXOTICS)	0.23	0.1%
4241 E26	MAXIMILIAN WILLOW, HYDRIC (50-75% EXOTICS)	0.23	0.1%
4241 E27	MAXIMILIAN WILLOW, HYDRIC (50-75% EXOTICS)	0.23	0.1%
4241 E28	MAXIMILIAN WILLOW, HYDRIC (50-75% EXOTICS)	0.23	0.1%
4241 E29	MAXIMILIAN WILLOW, HYDRIC (50-75% EXOTICS)	0.23	0.1%
4241 E30	MAXIMILIAN WILLOW, HYDRIC (50-75% EXOTICS)	0.23	0.1%
4241 E31	MAXIMILIAN WILLOW, HYDRIC (50-75% EXOTICS)	0.23	0.1%
4241 E32	MAXIMILIAN WILLOW, HYDRIC (50-75% EXOTICS)	0.23	0.1%
4241 E33	MAXIMILIAN WILLOW, HYDRIC (50-75% EXOTICS)	0.23	0.1%
4241 E34	MAXIMILIAN WILLOW, HYDRIC (50-75% EXOTICS)	0.23	0.1%
4241 E35	MAXIMILIAN WILLOW, HYDRIC (50-75% EXOTICS)	0.23	0.1%
4241 E36	MAXIMILIAN WILLOW, HYDRIC (50-75% EXOTICS)	0.23	0.1%
4241 E37	MAXIMILIAN WILLOW, HYDRIC (50-75% EXOTICS)	0.23	0.1%
4241 E38	MAXIMILIAN WILLOW, HYDRIC (50-75% EXOTICS)	0.23	0.1%
4241 E39	MAXIMILIAN WILLOW, HYDRIC (50-75% EXOTICS)	0.23	0.1%
4241 E40	MAXIMILIAN WILLOW, HYDRIC (50-75% EXOTICS)	0.23	0.1%
4241 E41	MAXIMILIAN WILLOW, HYDRIC (50-75% EXOTICS)	0.23	0.1%
4241 E42	MAXIMILIAN WILLOW, HYDRIC (50-75% EXOTICS)	0.23	0.1%
4241 E43	MAXIMILIAN WILLOW, HYDRIC (50-75% EXOTICS)	0.23	0.1%
4241 E44	MAXIMILIAN WILLOW, HYDRIC (50-75% EXOTICS)	0.23	0.1%
4241 E45	MAXIMILIAN WILLOW, HYDRIC (50-75% EXOTICS)	0.23	0.1%
4241 E46	MAXIMILIAN WILLOW, HYDRIC (50-75% EXOTICS)	0.23	0.1%
4241 E47	MAXIMILIAN WILLOW, HYDRIC (50-75% EXOTICS)	0.23	0.1%
4241 E48	MAXIMILIAN WILLOW, HYDRIC (50-75% EXOTICS)	0.23	0.1%
4241 E49	MAXIMILIAN WILLOW, HYDRIC (50-75% EXOTICS)	0.23	0.1%
4241 E50	MAXIMILIAN WILLOW, HYDRIC (50-75% EXOTICS)	0.23	0.1%
4241 E51	MAXIMILIAN WILLOW, HYDRIC (50-75% EXOTICS)	0.23	0.1%
4241 E52	MAXIMILIAN WILLOW, HYDRIC (50-75% EXOTICS)	0.23	0.1%
4241 E53	MAXIMILIAN WILLOW, HYDRIC (50-75% EXOTICS)	0.23	0.1%
4241 E54	MAXIMILIAN WILLOW, HYDRIC (50-75% EXOTICS)	0.23	0.1%
4241 E55	MAXIMILIAN WILLOW, HYDRIC (50-75% EXOTICS)	0.23	0.1%
4241 E56	MAXIMILIAN WILLOW, HYDRIC (50-75% EXOTICS)	0.23	0.1%
4241 E57	MAXIMILIAN WILLOW, HYDRIC (50-75% EXOTICS)	0.23	0.1%
4241 E58	MAXIMILIAN WILLOW, HYDRIC (50-75% EXOTICS)	0.23	0.1%
4241 E59	MAXIMILIAN WILLOW, HYDRIC (50-75% EXOTICS)	0.23	0.1%
4241 E60	MAXIMILIAN WILLOW, HYDRIC (50-75% EXOTICS)	0.23	0.1%
4241 E61	MAXIMILIAN WILLOW, HYDRIC (50-75% EXOTICS)	0.23	0.1%
4241 E62	MAXIMILIAN WILLOW, HYDRIC (50-75% EXOTICS)	0.23	0.1%
4241 E63	MAXIMILIAN WILLOW, HYDRIC (50-75% EXOTICS)	0.23	0.1%
4241 E64	MAXIMILIAN WILLOW, HYDRIC (50-75% EXOTICS)	0.23	0.1%
4241 E65	MAXIMILIAN WILLOW, HYDRIC (50-75% EXOTICS)	0.23	0.1%
4241 E66	MAXIMILIAN WILLOW, HYDRIC (50-75% EXOTICS)	0.23	0.1%
4241 E67	MAXIMILIAN WILLOW, HYDRIC (50-75% EXOTICS)	0.23	0.1%
4241 E68	MAXIMILIAN WILLOW, HYDRIC (50-75% EXOTICS)	0.23	0.1%
4241 E69	MAXIMILIAN WILLOW, HYDRIC (50-75% EXOTICS)	0.23	0.1%
4241 E70	MAXIMILIAN WILLOW, HYDRIC (50-75% EXOTICS)	0.23	0.1%

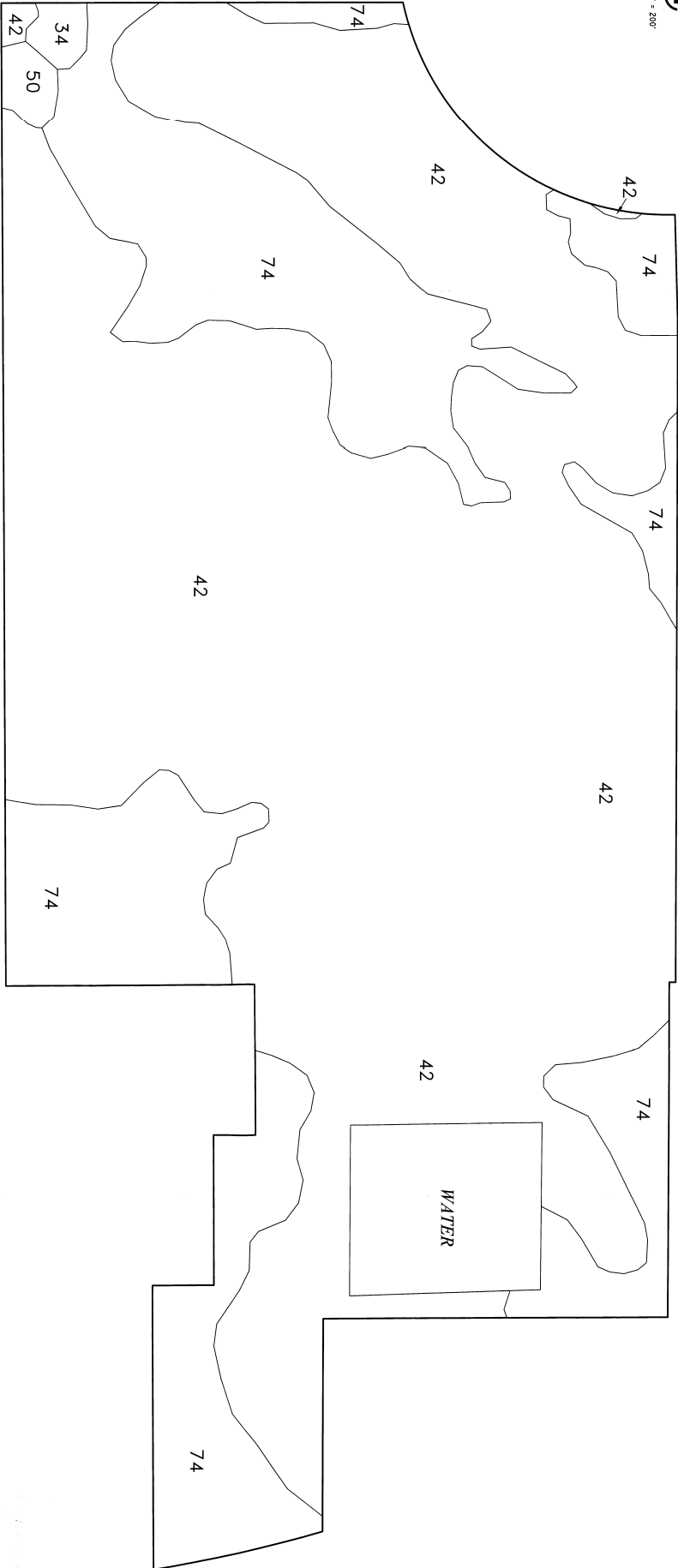
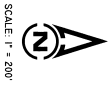
0012004-000910

REVISIONS	DATE	HORIZONTAL SCALE
DESIGNED BY	10/18/04	1" = 200'
CHECKED BY	10/18/04	VERTICAL SCALE
DRAWN BY	10/18/04	N/A
DATE	10/18/04	SEC./MIN./SEC.
DESIGNED BY	10/18/04	27/28/43/24

PASSARELLA and ASSOCIATES, INC.
 Consulting Ecologists
 9110 College Pointe Court, Fort Myers, Florida 33919

THE ESTATES AT ENTRADA
 FLUCFCS AND WETLANDS MAP

DRAWING NO.: 04S411048
 SHEET NO.: EXHIBIT 6-F



Soil Unit	Description	Status
34	MALABAR FINE SAND	HYDRIC
42	WABASSO SAND, LIMESTONE SUBSTRATIUM	NON-HYDRIC
50	OLDSMAR FINE SAND, LIMESTONE SUBSTRATIUM	NON-HYDRIC
74	BOCA FINE SAND, SLOUGH	HYDRIC

NOTE:
 SOILS MAP SCANNED FROM NRCS
 LEE COUNTY SOIL SURVEY.

REVISIONS		DESIGNED BY	DATE	HORIZONTAL SCALE
Revised per new boundary	7/7/05	C.E.	8/30/04	1" = 200'
		K.C.P.	8/30/04	N/A
		D.B.	8/30/04	27.28/43/24

PASSARELLA and ASSOCIATES, INC.

Consulting Ecologists

9110 College Pointe Court, Fort Myers, Florida 33919

THE ESTATES AT ENTRADA

SOILS MAP

0612004-00080

DRAWING No.:

04SA1048

SHEET No.:

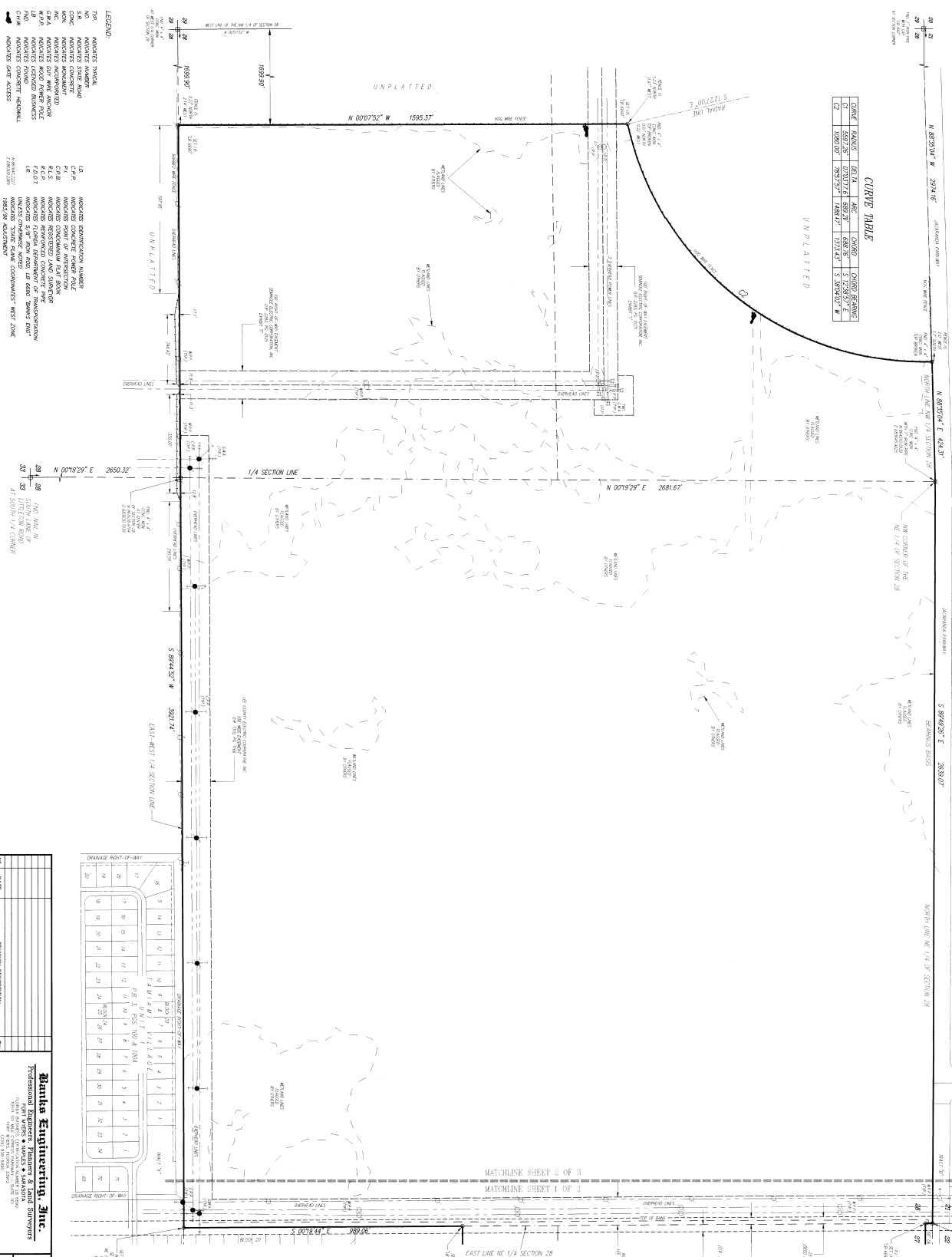
EXHIBIT 6-E

CAPE CORAL
 UNIT 86
 P.B. 24, PGS. 144-161

SURVEY PLAT
 OF
 A PARCEL OF LAND LYING IN
 RANGE 24 EAST,
 SECTION 27 & 28,
 T4E COUNTY, FLORIDA

CURVE TABLE

CHORD BEARS	DELTA	ARC	CURVE	CURVE BEARING
1000.00'	79.3757°	168.61'	S 89.042° E	5.5804102° W



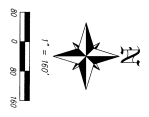
- LEGEND:**
- INDICATES PROPERTY
 - INDICATES STATE ROAD
 - INDICATES INTERSECTION
 - INDICATES ROAD
 - INDICATES ROAD RIGHT-OF-WAY
 - INDICATES ROAD POWER POLE
 - INDICATES ROAD
 - INDICATES CONCRETE DRIVEWAY
 - INDICATES DRIVE ACCESS

NO.	DATE	REVISION DESCRIPTION

Banka Engineering, Inc.
 Professional Engineers, Planners & Land Surveyors
 11000 S.W. 11th Street, Suite 100, Boca Raton, FL 33433
 (561) 368-1100

0032004-00080

Applicant's Survey Checked
 By: John B. Sullivan
 (TP 2-6-2)



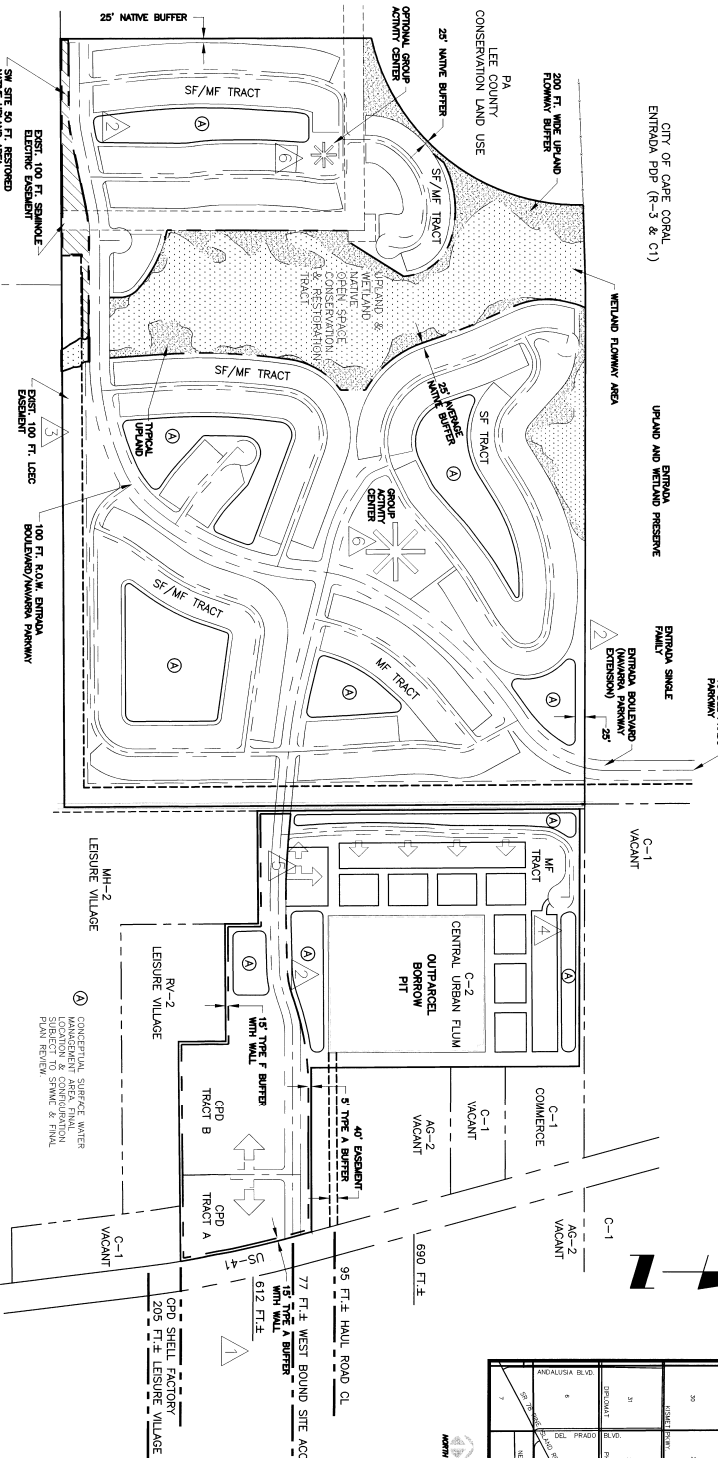
MATCHLINE SHEET 2 OF 3
 MATCHLINE SHEET 1 OF 3

LEISURE VILLAGE
 C.P.B. 3, PGS. 60-76

SCALE OF RESOLUTION

PROJECT NOTES AND GENERAL CONDITIONS:

1. THE FINAL DEVELOPMENT PLAN WILL BE CONSISTENT WITH THE RPD/CPD MAP. THE FINAL COMPROMISE PLAN FOR THE RPD/CPD MAP WILL BE DETERMINED BY THE LEA COUNTY PLANNING AND ZONING DEPARTMENT.
2. REQUIRED PARKING FOR PRIVATE ON-SITE GROUP RECREATION FACILITIES AT ONE SPACE PER 500 SQ.FT. SYSTEM TO BE DETERMINED AT THE FIRST NO.
3. PHASE ONE LAY OUTS OF THE DEVELOPMENT ARE: ROADS, UTILITIES AND THE STORM WATER MANAGEMENT SYSTEM.



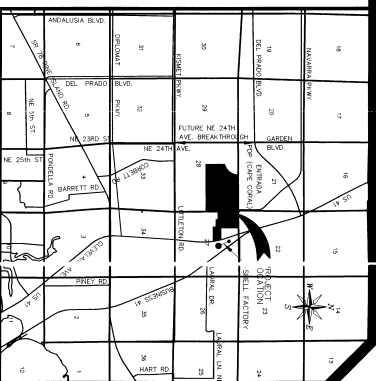
THE RPD/CPD PROJECT SUMMARY

EXISTING LAND USE	PROPOSED ZONING	TOTAL SITE AREA	RPD GROSS SITE AREA	RPD UTILITY RESIDENTS	RPD UTILITY PARKWAY EXTENSION	RPD NET SITE AREA	CPD SITE AREA	WATER UTILITIES	STORMWATER UTILITIES	PLANNING COMMENTS	DEVELOPMENT PROGRAM	RPD SINGLE FAMILY UNITS	RPD MULTI-FAMILY UNITS	CPD	OTHER NON-RETAIL COMMERCIAL AND WAREHOUSE
ENTRADA SINGLE FAMILY	MH-2	2798 ACRES	2798 ACRES	1724 ACRES	1164 ACRES	234 ACRES	234 ACRES	LEA COUNTY UTILITIES	NORTH EAST UTILITIES	NORTH EAST UTILITIES	1 (STORM SPACE CONSUMER 4)	400 DWELLING UNITS	800 DWELLING UNITS	170,000 S.F.	140,000 S.F.

THE RPD OPEN SPACE TABLE

TOTAL SITE AREA	NET RPD SITE AREA	RPD REQUIRED OPEN SPACE/NATURE OPEN SPACE	CPD SITE AREA	TOTAL REQUIRED OPEN SPACE/NATURE OPEN SPACE	FLOW WAY NATURE UPLAND BUFFERS	25' CREDIT	FLOW WAY NATURE UPLAND BUFFERS	NORTH SITE WETLAND-UPLAND NATURE BUFFER AREA	WEST SITE WETLAND	SOUTHWEST SITE 50 FT RESTORATION AREA	CPD PRESERVE LANDSCAPE BUFFERS	PROJECT LAKE AREAS	COMMON INTERNAL OPEN SPACE AREAS
2798 ACRES	2798 ACRES	8038 ACRES, NATURE @ 45.3% ACRES	234 AC.	838 ACRES, NATURE @ 3.4% ACRES	9734 ACRES, NATURE @ 48.7% ACRES	11494 ACRES	11494 ACRES	11494 ACRES	11494 ACRES	2002 ACRES	1244 ACRES	24384 ACRES	14114 ACRES

(1) FINAL PROJECT OPEN SPACE PLAN TO BE DETERMINED AT DEVELOPMENT ORDER AND WILL CONSIST OF OPEN SPACE AND NATURE OPEN SPACE WITHIN A MINIMUM 20% GENERAL OPEN SPACE.



DCI 2004-00080
 DATE: 7/2/2004
 TOWN: CENTRAL URBAN

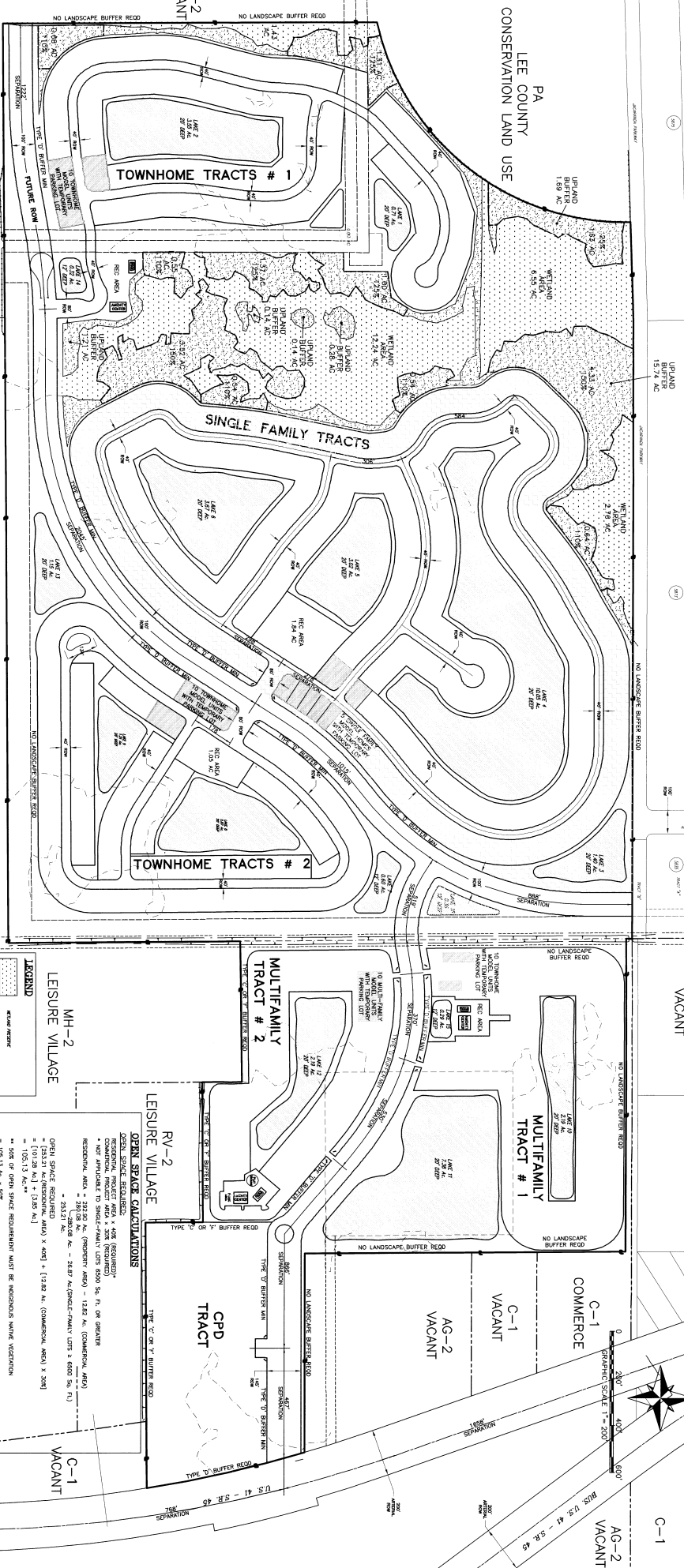
MASTER CONCEPT PLAN FOR THE ESTATES AT ENTRADA – A MIXED USE PLANNED DEVELOPMENT

PREPARED FOR: REALMARK GROUP LLC.

STUART AND ASSOCIATES
 Planning & Design Services
 5628 Cape Harbour Drive Suite 102
 Cape Coral, FL 33914
 PH: (239) 541-7176, FAX: (239) 541-1584
 EMAIL: CS@STUARTANDASSOCIATES.COM

Date: 10/28/04
 Scale: 1" = 300'
 Revisions:
 JOB NO.: 04.002
 Sheet 1 Of 1

CITY OF CAPE CORAL
ENTRADA PDP (R-3 & C1)



PROJECT SUMMARY DATA

PROJECT AREA	292.80 AC.
PROPOSED ZONING	MH-2, C-1, RV-2 AND C-2
FLOOD ZONE	X (SPECIAL STUDY CATEGORY 4)
LAND USE BREAKDOWN	
WILLIAMS TRACTS TOTAL:	21.88 AC.
WILLIAMS TRACTS #1:	11.88 AC.
WILLIAMS TRACTS #2:	10.00 AC.
WILLIAMS TRACTS #3:	11.71 AC.
WILLIAMS TRACTS #4:	12.85 AC.
WILLIAMS TRACTS #5:	40.10 AC.
WILLIAMS TRACTS #6:	23.51 AC.
WILLIAMS TRACTS #7:	20.98 AC.

DEVELOPING UNIT BREAKDOWN

WILLIAMS TRACTS #1	= 595
WILLIAMS TRACTS #2	= 595
WILLIAMS TRACTS #3	= 595
WILLIAMS TRACTS #4	= 595
WILLIAMS TRACTS #5	= 595
WILLIAMS TRACTS #6	= 595
WILLIAMS TRACTS #7	= 595
TOTAL ESTIMATED UNITS	3980

OPEN SPACE CALCULATIONS

RESIDENTIAL PROJECT AREA 1.00X (REQUIRED) = 292.80 AC. (PROPOSED AREA) = 12.85 AC. (COMMERCIAL AREA) = 101.28 AC. (TOTAL) = 292.80 AC.

RESIDENTIAL PROJECT AREA 1.00X (REQUIRED) = 292.80 AC. (PROPOSED AREA) = 12.85 AC. (COMMERCIAL AREA) = 101.28 AC. (TOTAL) = 292.80 AC.

RESIDENTIAL PROJECT AREA 1.00X (REQUIRED) = 292.80 AC. (PROPOSED AREA) = 12.85 AC. (COMMERCIAL AREA) = 101.28 AC. (TOTAL) = 292.80 AC.

PREPARED FOR:
EH BUILDING GROUP II
SOUTHWEST DIVISION
17251 WESTLAKES BLVD., UNIT 1
ROSE MEADOWS, FLORIDA 33813
TEL: (889) 275-9777
FAX: (889) 275-9777

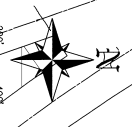
NO.	DATE	REVISION DESCRIPTION

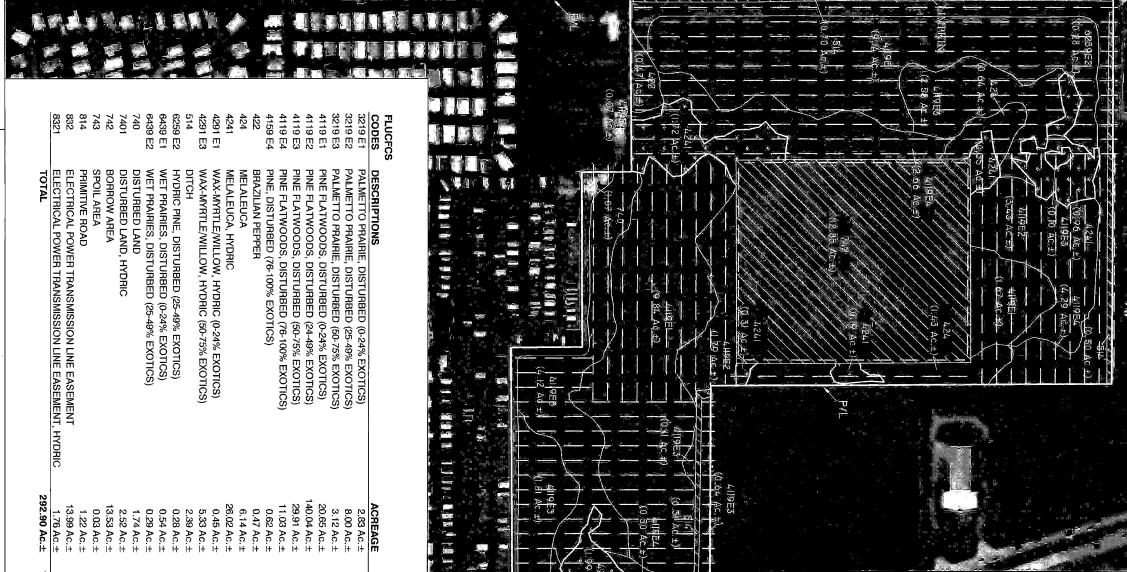
Smiths Engineering, Inc.
Professional Engineers, Planners & Land Surveyors
ORADOLITE LICENSE NO. 15453-0101
PHONE: (889) 275-9777
FAX: (889) 275-9777
15453-0101
15453-0101
15453-0101

PRELIMINARY MASTER CONCEPT PLAN
ESTATES AT ENTRADA
LEE COUNTY, FLORIDA

DATE	PROJECT	ISSUED	REVISION	BY	SCALE
18 Oct 2005	3084	WORK			1"=200'

RECEIVED
NOV 03 2005
FILE NO. 05-1-80
28-45-24





FLUCCS CODES	DESCRIPTIONS	ACREAGE	% OF TOTAL
3219 E1	PALMETTO PRAIRIE, DISTURBED (0-24% EXOTICS)	2.58 AC.±	1.0%
3219 E2	PALMETTO PRAIRIE, DISTURBED (25-49% EXOTICS)	8.00 AC.±	2.7%
3219 E3	PALMETTO PRAIRIE, DISTURBED (50-75% EXOTICS)	3.12 AC.±	1.1%
4119 E1	FINE FLATWOODS, DISTURBED (0-24% EXOTICS)	20.69 AC.±	7.7%
4119 E2	FINE FLATWOODS, DISTURBED (25-49% EXOTICS)	14.91 AC.±	4.7%
4119 E3	FINE FLATWOODS, DISTURBED (50-75% EXOTICS)	29.91 AC.±	10.2%
4119 E4	FINE FLATWOODS, DISTURBED (76-100% EXOTICS)	11.69 AC.±	3.8%
4119 E5	FINE FLATWOODS, DISTURBED (76-100% EXOTICS)	0.62 AC.±	0.2%
422	BRAZILIAN PEPPER	0.17 AC.±	0.0%
424	MEALIEUCA, HYDRIC	8.76 AC.±	2.9%
4241	MEALIEUCA, HYDRIC	8.76 AC.±	2.9%
4291 E1	WAX-WARTLE WILLOW, HYDRIC (60-75% EXOTICS)	0.54 AC.±	0.2%
4291 E2	WAX-WARTLE WILLOW, HYDRIC (60-75% EXOTICS)	5.39 AC.±	1.8%
514	DITCH	2.29 AC.±	0.8%
6299 E1	HYDRIC PINE, DISTURBED (25-49% EXOTICS)	0.29 AC.±	0.1%
6299 E2	HYDRIC PINE, DISTURBED (50-75% EXOTICS)	0.24 AC.±	0.0%
6299 E3	HYDRIC PINE, DISTURBED (76-100% EXOTICS)	1.74 AC.±	0.6%
740	DISTURBED LAND, HYDRIC	2.82 AC.±	0.9%
742	BORROW AREA	13.59 AC.±	4.6%
743	SPILL AREA	0.03 AC.±	0.0%
812	ELECTRICAL POWER TRANSMISSION LINE EASEMENT	13.99 AC.±	4.6%
821	ELECTRICAL POWER TRANSMISSION LINE EASEMENT, HYDRIC	1.79 AC.±	0.6%
TOTAL		252.50 AC.±	100.0%

REVISIONS	
DESIGNED BY	C.E.
CHECKED BY	K.C.P.
DATE	5/13/04
HORIZONTAL SCALE	1" = 200'
VERTICAL SCALE	N/A
DATE	5/13/04
SEC./YR./INC.	27.28/43/24
DRAWN BY	W.C., D.B.
DATE	5/13/04
REVISIONS	7/9/05
REVISIONS	7/9/05

PASSARELLA and ASSOCIATES, INC.
 Consulting Ecologists
 9110 College Pointe Court, Fort Myers, Florida 33919

THE ESTATES AT ENTRADA
 AERIAL WITH FLUCCS AND WETLANDS, WALKED
 SURVEY TRANSECTS, AND PROTECTED SPECIES LOCATIONS
 APPENDIX A

DRAWING NO.: 05A11048
 SHEET NO.:
 DATE: 02/20/04-00080

LEGEND:
 SWAMP WETLANDS
 (58.87 AC.±)
 SPRAWL/ OTHER SURFACE WATERS
 (16.21 AC.±)
 APPROXIMATE LOCATION OF
 GOPHER TORTOISE BURROW
 (APPROXIMATE LOCATION OF
 LIMP-RIN SIGNING)
 WALKED SURVEY TRANSECTS
**GOPHER TORTOISE BURROW
 NUMBER & STATUS**
 G1-1 (0)
 G1-2 (A)
 G1-3 (0)
 G1-5 (0)
 G1-6 (0)
 G1-7 (0)
 G1-8 (0)

NOTES:
 AERIAL PHOTOGRAPHS WERE
 ACQUIRED THROUGH LEE COUNTY
 FLIGHT DATE OF APRIL-MAY, 2002
 DATED 10/14/04.
 FLUCCS FOR FLORIDA LAND USE
 COVER AND PATTERN CLASSIFICATION
 SYSTEM (FLUCCS) (F007 1999)
 PREPARED BY BARBARA J. WELT AND
 LINDA PEEBLES ENGINEERING AND
 DRAWING NO. 3063, WETLAND EXB DWG
 DATED 10/14/04.
 WETLAND LINES REVIEWED AND
 APPROVED IN THE FIELD BY SWAMP
 STAFF ON JULY 22, 2004.
 DATE: 07/22/04

CITY OF CAPE CORAL
ENTRADA PDB (R-3 & C-1)

UPLAND BUFFER 15.74 AC

NO LANDSCAPE BUFFER REQD

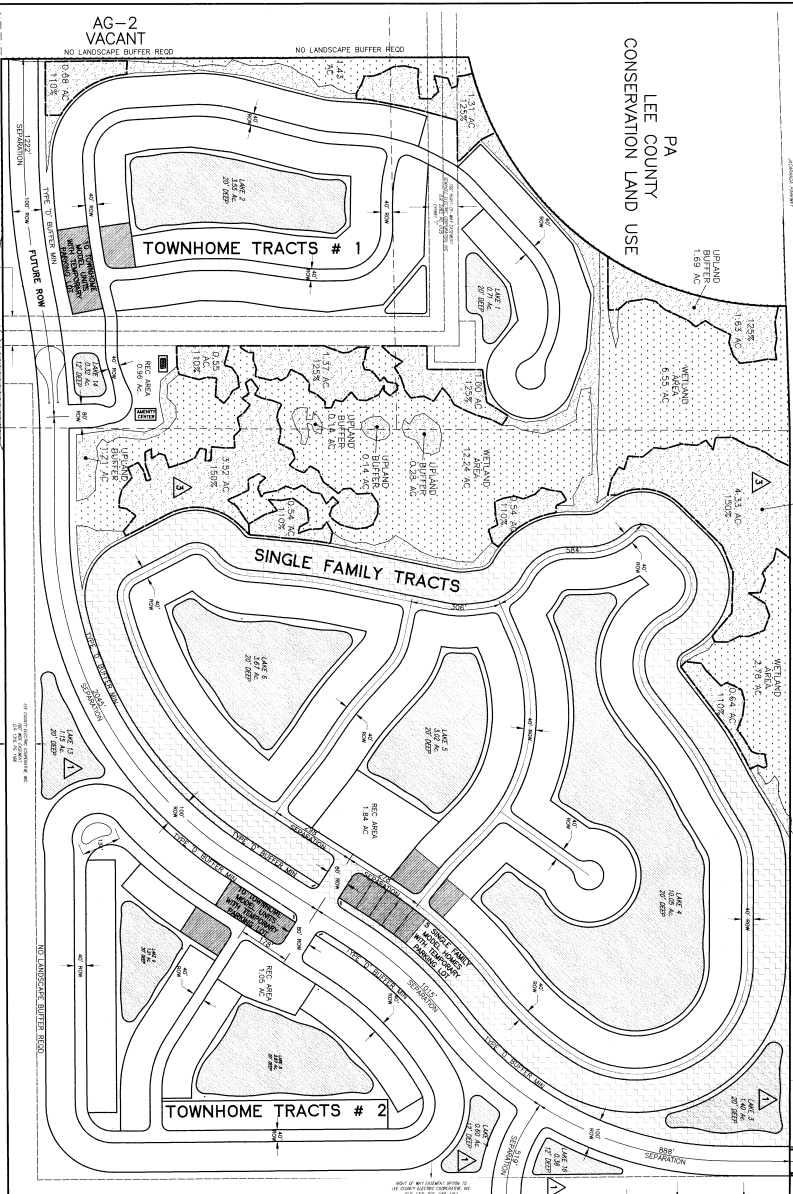
NO LANDSCAPE BUFFER REQD

NO LANDSCAPE BUFFER REQD

NO LANDSCAPE BUFFER REQD

NO LANDSCAPE BUFFER REQD

PA
LEE COUNTY
CONSERVATION LAND USE



CL LITTLETON ROAD

CL HORIZON DRIVE

EH BUILDING GROUP II
SOUTHWEST DIVISION

12251 WESTLAKES DRIVE, UNIT 1
FORT MYERS, FL 33907
PHONE: (239) 275-0727
FAX: (239) 275-0727

Granite Engineering, Inc.
Professional Engineers, Planners & Land Surveyors

11405 W. COUNTY ROAD 792 - SUITE B
CAPE CORAL, FL 33914
PHONE: (407) 527-1610
FAX: (407) 527-1610

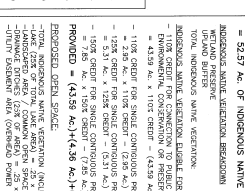
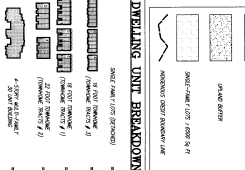
UPLAND BUFFER 23.01 AC
UPLAND BUFFER 23.01 AC

NO LANDSCAPE BUFFER REQD

NO LANDSCAPE BUFFER REQD

NO LANDSCAPE BUFFER REQD

NO LANDSCAPE BUFFER REQD



OPEN SPACE CALCULATIONS
RESIDENTIAL PRODUCT AREA x 40% (REQUIRED)
COMMERCIAL PRODUCT AREA x 30% (REQUIRED) 5% IN OPEN SPACES
TOTAL OPEN SPACE PROVIDED = 118.43 AC

APPROVED
Master Concept Plan
Submitted to Conditions & Regulation
DATE: 01/15/2005
PROJECT: 3084

PRELIMINARY MASTER CONCEPT PLAN
ESTATES AT ENTRADA
LEE COUNTY, FLORIDA

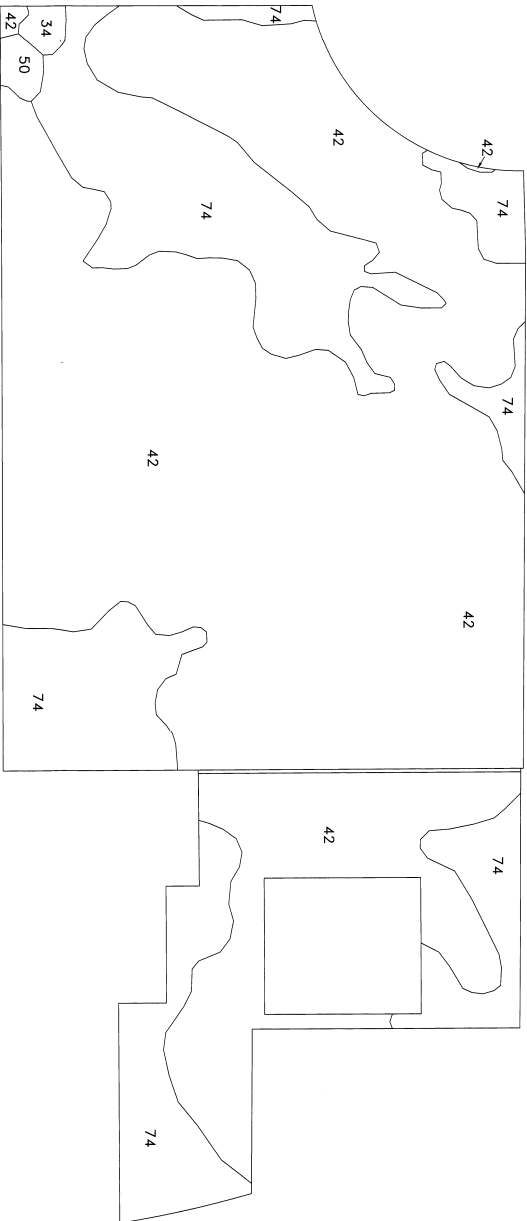
DATE	PROJECT	ISSUED	REVISION	BY	DATE	SCALE	SHEET
10 OCT 2005	3084	WPH				1"=200'	28-43-24

C-1

AG-2
VACANT



SCALE: 1" = 300'



Soil Unit	Description	Status
34	MALABAR FINE SAND	HYDRIC
42	WABASSO SAND, LIMESTONE SUBSTRATUM	NON-HYDRIC
50	OLDSMAR FINE SAND, LIMESTONE SUBSTRATUM	NON-HYDRIC
74	BOCA FINE SAND, SLOUGH	HYDRIC

NOTE:
SOILS MAP SCANNED FROM NRCS
LEE COUNTY SOIL SURVEY.

00120 04 -00080

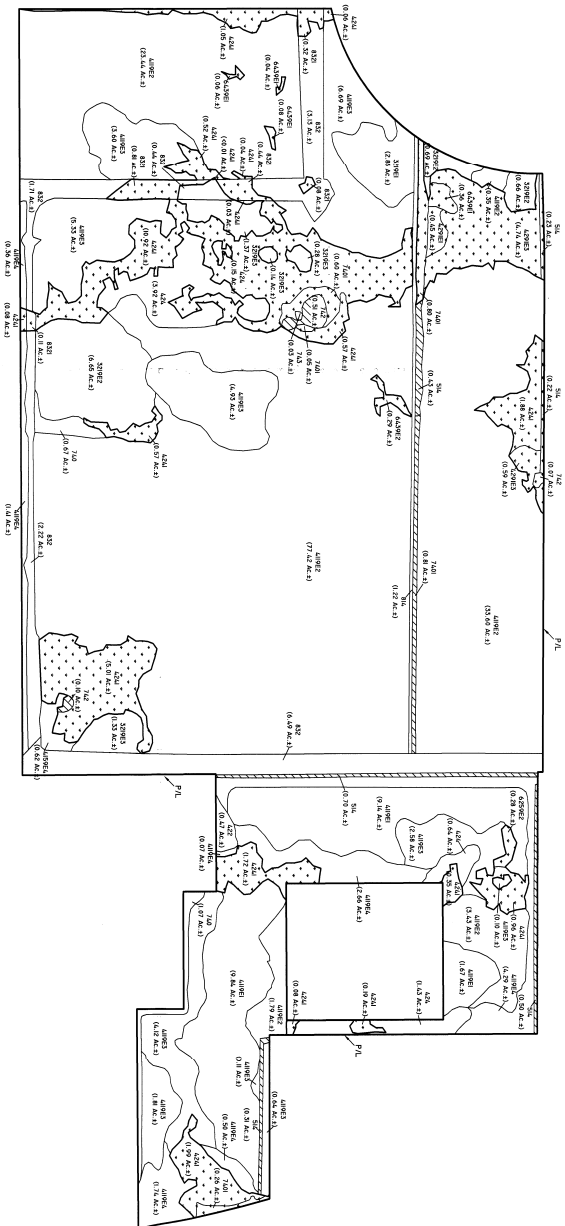
DEC 22 2004

EXHIBIT 6-E

REVISIONS		DESIGNED BY	DATE	HORIZONTAL SCALE	VERTICAL SCALE	SEC./INCH/INCH	<p><i>PASSARELLA and ASSOCIATES, INC.</i> <i>Consulting Ecologists</i> 9110 College Pointe Court, Fort Myers, Florida 33919</p>	<p>THE ESTATES AT ENTRADA SOILS MAP</p>	DRAWING No.:
		C.E.	8/30/04	1" = 300'	N/A				OASAI 048
		K.C.P.	8/30/04						
		D.B.	8/30/04	27.28/43/24					EXHIBIT 6-E



SCALE 1" = 300'



- LEGEND:
- SPRING WETLANDS (66.87 AC.)
 - OTHER SURFACE WATERS (3.50 AC.)
 - SURVEYED WETLAND LINE

FLUCFOS CODES	DESCRIPTIONS	ACREAGE	% OF TOTAL
3219 E1	PALMETTO PRUNGE, DISTURBED (0-24% EXOTICS)	2.83 AC.	1.0%
3219 E2	PALMETTO PRUNGE, DISTURBED (25-49% EXOTICS)	8.00 AC.	2.9%
3219 E3	PALMETTO PRUNGE, DISTURBED (50-75% EXOTICS)	312 AC.	11%
4118 E2	PINE FLATWOODS, DISTURBED (0-24% EXOTICS)	4,000 AC.	14%
4118 E3	PINE FLATWOODS, DISTURBED (25-49% EXOTICS)	2,917 AC.	10%
4118 E4	PINE FLATWOODS, DISTURBED (50-75% EXOTICS)	1,109 AC.	3.9%
4119 E4	PINE FLATWOODS, DISTURBED (75-100% EXOTICS)	0.82 AC.	0.2%
422	BRAZILIAN PEPER	0.17 AC.	0.0%
423	MELALEUCA, HYDRIC	26.02 AC.	9%
424	MELALEUCA, HYDRIC	0.45 AC.	0.1%
4291 E1	WAX MYRTLE/AMILLOW, HYDRIC (50-75% EXOTICS)	5.38 AC.	1.9%
4291 E3	WAX MYRTLE/AMILLOW, HYDRIC (75-100% EXOTICS)	2.38 AC.	0.8%
514	DITCH	0.28 AC.	0.1%
6269 E2	HYDRIC PINE, DISTURBED (25-49% EXOTICS)	0.28 AC.	0.1%
6439 E2	WET PRUNGE, DISTURBED (0-24% EXOTICS)	1.74 AC.	0.6%
740	DISTURBED LAND, HYDRIC	2.52 AC.	0.9%
7401	DISTURBED LAND, HYDRIC	0.89 AC.	0.2%
742	BORROW AREA	0.03 AC.	0.0%
743	SPILL AREA	1.39 AC.	0.5%
744	ROAD	1.72 AC.	0.6%
821	ELECTRICAL POWER TRANSMISSION LINE EASEMENT	1.72 AC.	0.6%
822	ELECTRICAL POWER TRANSMISSION LINE EASEMENT, HYDRIC	1.72 AC.	0.6%
TOTAL		280.05 AC.	100.0%

NOTES:

- FLUCFOS LINES ESTIMATED FROM LOCATIONS APPROXIMATED.
- FLUCFOS PER FLORIDA LAND USE SYSTEM (FLUCFOS) (FOOT 1992).
- PROPERTY BOUNDARY AND WETLAND SYSTEM (FLUCFOS) (FOOT 1992).
- DRAWING NO. 300.3 WETLAND-ENR.DWG DATED 10/14/04.
- WETLAND LINES REVIEWED AND APPROVED IN THE FIELD BY SHIMW STAFF ON JULY 22, 2004.

DCI2004-00080

REVISIONS	DATE	HORIZONTAL SCALE	VERTICAL SCALE
DESIGNED BY	10/18/04	1" = 300'	
CHECKED BY	10/18/04		
DRAWN BY	10/18/04		
DATE	10/18/04		
SEC./INSP./PND.	27.28/43/24		

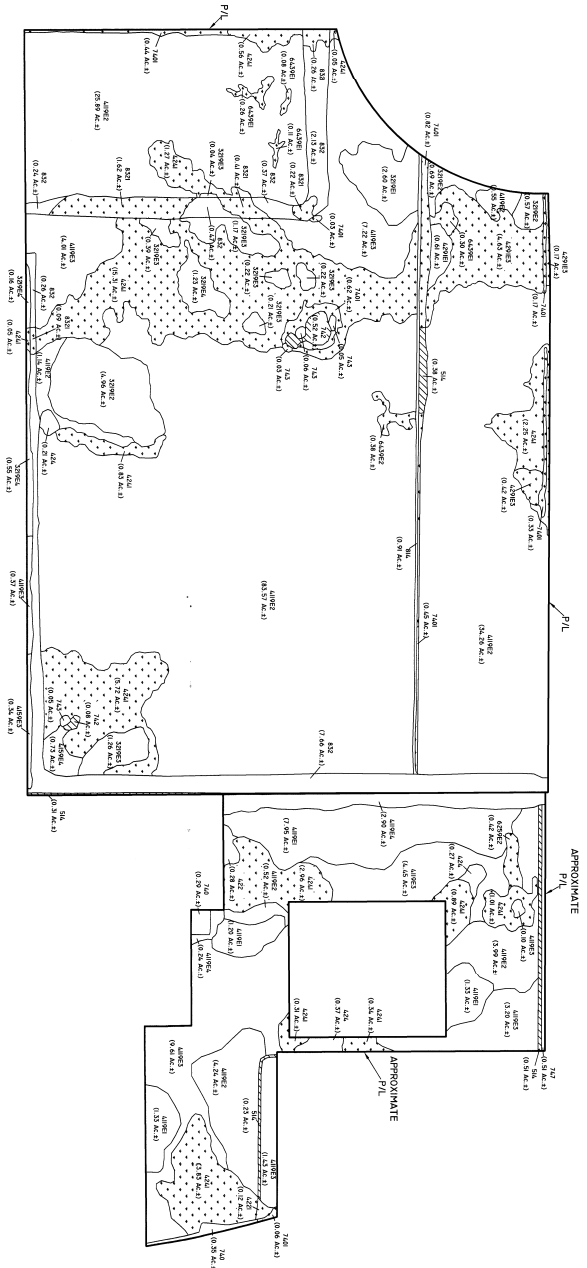
PASSARELLA and ASSOCIATES, INC.
 Consulting Ecologists
 9110 College Pointe Court, Fort Myers, Florida 33919

THE ESTATES AT ENTRADA
 FLUCFOS AND WETLANDS MAP

DRAWING NO.	04SAT048
SHEET NO.	EXHIBIT 6-F



SCALE: 1" = 300'



LEGEND

	SPRING WETLANDS (0.43 AC ±)
	SFWMD OTHER SURFACE WATERS (2.03 AC ±)

FLUFCOS CODE	DESCRIPTION	ACRES ±	% OF TOTAL
3219 E1	PALMETTO PRAMIE, DISTURBED (25-49% EXOTICS)	2.90 AC ±	0.2%
3219 E2	PALMETTO PRAMIE, DISTURBED (25-49% EXOTICS)	6.22 AC ±	2.2%
3219 E3	PALMETTO PRAMIE, DISTURBED (25-49% EXOTICS)	3.51 AC ±	1.3%
4119 E1	PINE FLATWOODS, DISTURBED (50-75% EXOTICS)	1.84 AC ±	0.7%
4119 E2	PINE FLATWOODS, DISTURBED (50-75% EXOTICS)	154.16 AC ±	55.1%
4119 E3	PINE FLATWOODS, DISTURBED (50-75% EXOTICS)	30.39 AC ±	10.9%
4119 E4	PINE FLATWOODS, DISTURBED (76-100% EXOTICS)	3.14 AC ±	1.1%
4221	PINE, DISTURBED (90-75% EXOTICS)	0.34 AC ±	0.1%
4241	BRAZILIAN PEPPER (70-90% EXOTICS)	0.29 AC ±	0.1%
4242	BRAZILIAN PEPPER (70-90% EXOTICS)	0.12 AC ±	0.0%
4243	BRAZILIAN PEPPER (70-90% EXOTICS)	0.56 AC ±	0.2%
4244	MELEUCIA, HYDRIC	35.29 AC ±	12.6%
4245	MELEUCIA, HYDRIC	5.22 AC ±	1.9%
4246	WAXMYRTLE/WILLOW, HYDRIC (50-75% EXOTICS)	1.43 AC ±	0.5%
4247	DITCH	0.42 AC ±	0.2%
4248	HYDRIC PINE, DISTURBED (25-49% EXOTICS)	0.75 AC ±	0.3%
4249	WET PRAMIE, DISTURBED (25-49% EXOTICS)	0.64 AC ±	0.2%
4250	DISTURBED LAND (25-49% EXOTICS)	2.82 AC ±	1.0%
7401	DISTURBED LAND, HYDRIC	0.60 AC ±	0.2%
7402	BOHIOVA AREA	0.19 AC ±	0.1%
7403	SOIL AREA	0.01 AC ±	0.0%
821	PRIMITIVE ROAD	0.01 AC ±	0.0%
822	ELECTRICAL POWER TRANSMISSION LINE EASEMENT	11.13 AC ±	4.0%
823	ELECTRICAL POWER TRANSMISSION LINE EASEMENT, HYDRIC	2.80 AC ±	0.9%
TOTAL		279.79 AC ±	100.0%

NOTES

FLUFCOS LINES ESTIMATED FROM 1:200' AERIAL PHOTOGRAPHS AND LOCATIONS APPROXIMATED.

FLUFCOS PER FLORIDA LAND USE COVER AND FORMS CLASSIFICATION SYSTEM (FLUFCOS) (FDOT 1999).

PROPERTY BOUNDARY OF THE WESTERN TWO THINGS PER BANKS ENGINEERS, INC. DRAWING NO. ENTRADA DMC DATED 10/19/03.

PROPERTY BOUNDARY OF THE EASTERN ONE THIRD ESTIMATED PER LEE COUNTY PROPERTY APPRAISER'S GIS WEB SITE.

UP/LAND/WETLAND LIMITS HAVE NOT BEEN REVIEWED BY ANY REGULATORY AGENCY AND ARE SUBJECT TO CHANGE.



REVISIONS

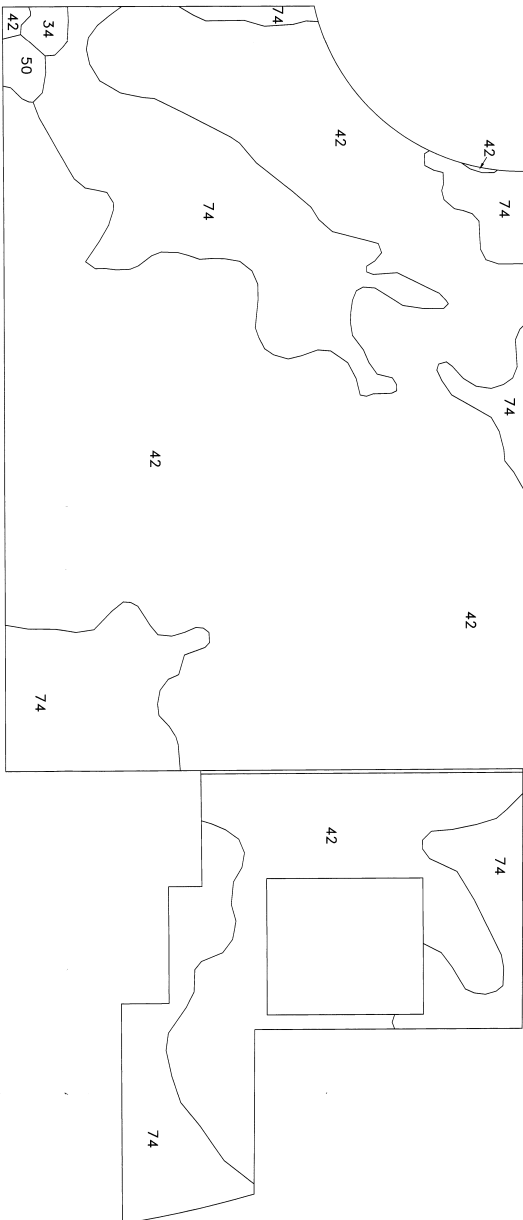
DESIGNED BY	DATE	HORIZONTAL SCALE
C.E.	5/13/04	1" = 300'
CHECKED BY	DATE	VERTICAL SCALE
K.C.P.	5/13/04	N/A
DRAWN BY	DATE	SEC./INCH./FUNG
W.C.D.B.	5/13/04	27/28/43/24

PASSARELLA and ASSOCIATES, INC.
 Consulting Ecologists
 9110 College Pointe Court, Fort Myers, Florida 33919

THE ESTATES AT ENTRADA
 FLUFCOS AND WETLANDS MAP

DRAWING NO.: OASAI048
 SHEET NO.: EXHIBIT 6-F

0612004-00080



Soil Unit	Description	Status
34	MALABAR FINE SAND	HYDRIC
42	WABASSO SAND, LIMESTONE SUBSTRATUM	NON-HYDRIC
50	OLDSMAR FINE SAND, LIMESTONE SUBSTRATUM	NON-HYDRIC
74	BOCA FINE SAND, SLOUGH	HYDRIC

NOTE:
SOILS MAP SCANNED FROM NRCS
LEE COUNTY SOIL SURVEY.



012004-00080

REVISIONS		DESIGNED BY		DATE		HORIZONTAL SCALE		<i>PASSARELLA and ASSOCIATES, INC.</i> <i>Consulting Ecologists</i> 9110 College Pointe Court, Fort Myers, Florida 33919	DRAWING No.:	
		C.E.	8/30/04	1" = 300'					THE ESTATES AT ENTRADA	
		CHECKED BY	8/30/04	VERTICAL SCALE					SOILS MAP	SHEET No.:
		K.C.P.	8/30/04	N/A						04SAM1048
		DRAWN BY	8/30/04	SEC./TWP./RANGE						EXHIBIT 6-E
		D.B.	8/30/04	27,28/43/24						