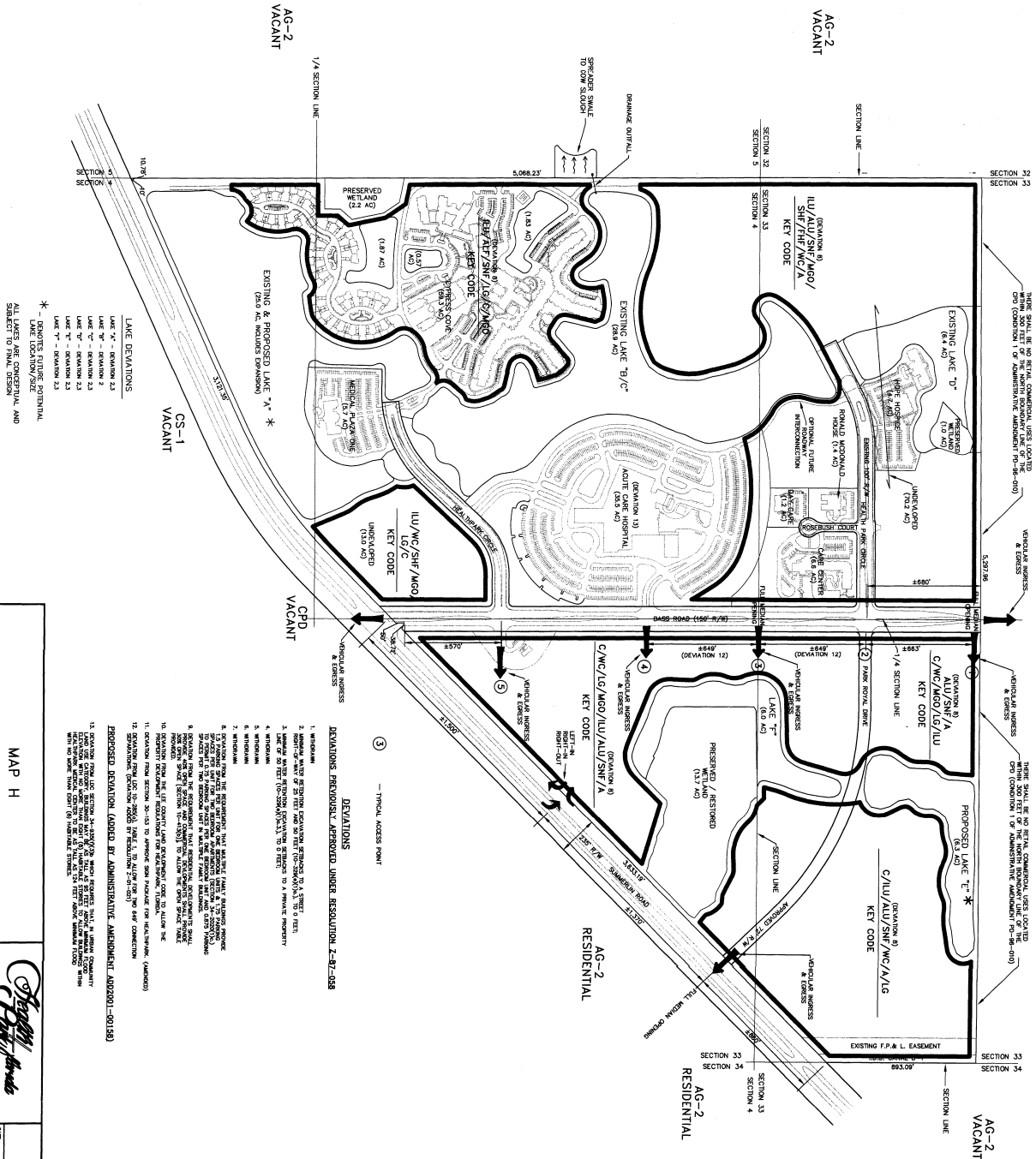


# Maps for

Case #: *DI 2003-0003*

LEE HEALTH VENTURE



HEALTHMARK FLORIDA LAND USES			
	LAND USE	NO. OF LOTS	SQ. FT. LAND
RESIDENTIAL	RESIDENTIAL	303	541,750 SQ. FT.
	CONDOMINIUMS	343	541,750 SQ. FT.
	APARTMENTS/CONDOMINIUMS	407	541,750 SQ. FT.
COMMERCIAL	COMMERCIAL - RETAIL	40	202,500 SQ. FT.
	COMMERCIAL - OFFICE	40	202,500 SQ. FT.
INDUSTRIAL	INDUSTRIAL	779	1,500 UNITS
	SEWER/TRA		
ACUTE CARE HOSPITAL	ACUTE CARE HOSPITAL	440	400P
	PSYCHIATRIC HOSPITAL		
	PSYCHIATRIC HOSPITAL	16	50P
	WILDER CARE CENTER		50P
	WILDER CARE CENTER		50P
NURSING HOME	NURSING HOME	779	1,500 SQ. FT.
	SEWER/TRA		
COMMERCIAL	COMMERCIAL	406	1,500 SQ. FT.
	SEWER/TRA		
FLYASH/COAL	FLYASH/COAL	C	175,000 SQ. FT.
	SEWER/TRA		
HEALTHCARE	HEALTHCARE	779	1,500 SQ. FT.
	SEWER/TRA		

(1) INCLUDES BOSTON, OXFORD AND DUNSTON STATION HEALTHCARE COMPLEX  
 (2) SEWER/TRA TO 779 MEDICAL OFFICE / 202,500 SQ. FT. MEDICAL OFFICE  
 (3) SEWER/TRA TO 779 MEDICAL OFFICE / 202,500 SQ. FT. MEDICAL OFFICE

[illegible]

COMMUNITY DEVELOPMENT  
OPI 2003-00003

MAP H

**JOHNSON ENGINEERING, INC.**  
ENGINEERS, SURVEYORS AND ECOLOGISTS  
2158 JOHNSON STREET, P.O. BOX 1550, FORT WORTH, FLORIDA 33802-1550, PHONE (941) 334-0044

DATE	PROJECT NO.	FILE NO.	SCALE	SHEET
June 27 2003	10203	3.4E.24	4" = 100'	

2003-00003

COMMUNITY DEVELOPMENT

JUL 01 2003

RECEIVED