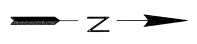




Maps for

Case #: DC12000-00070



SCALE 1" = 6,000'

SATELLITE IMAGERY BY
SPOT IMAGE CORPORATION

LEGEND

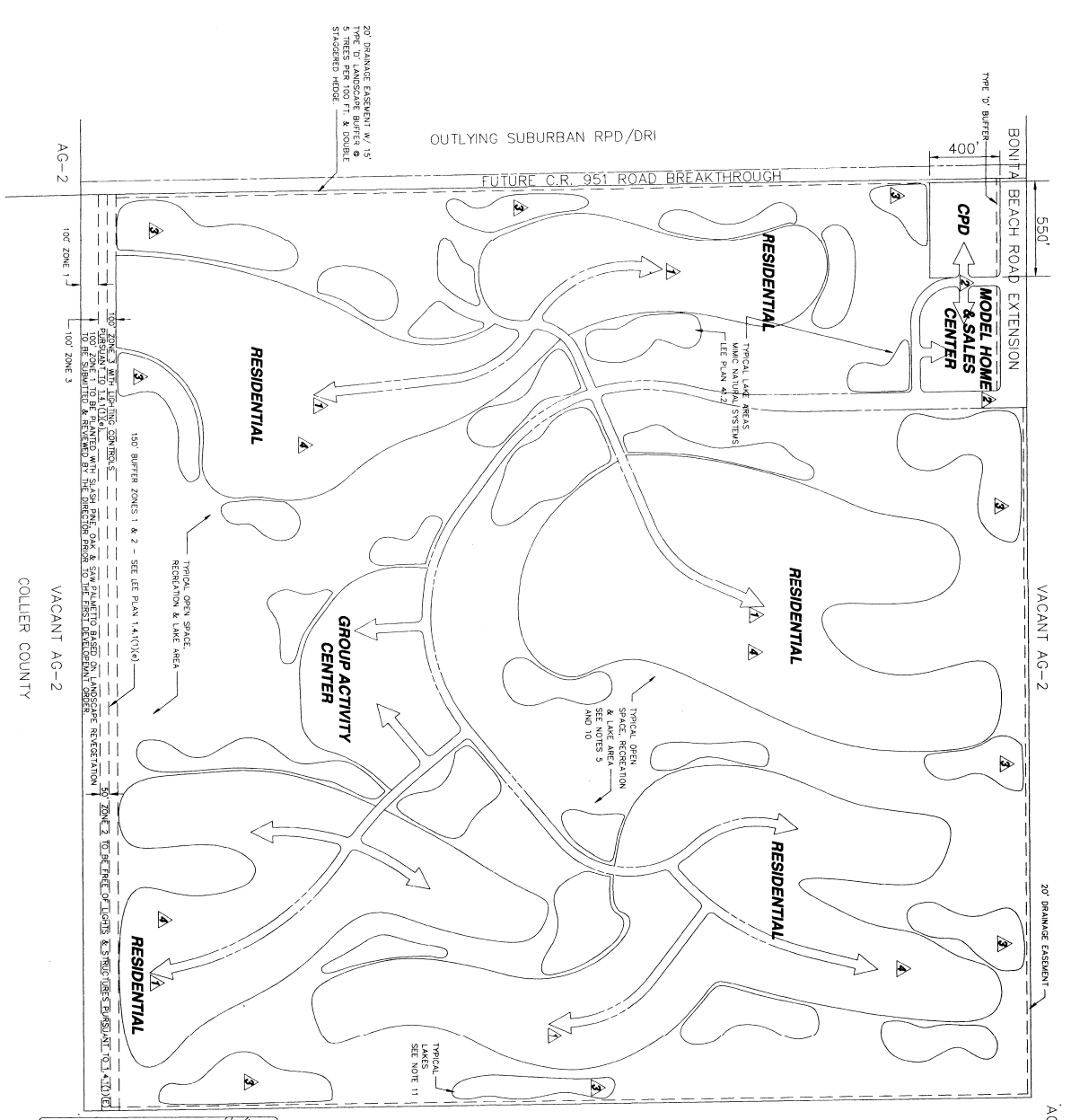
- NATURAL FLOW WAYS AND
POTENTIAL FLOW WAY RESTORATION
- EXISTING WATERSHEDS
- GENERALIZED WATERSHED BOUNDARY
- COUNTY LINE
- FLOW WAY NAME

Johnson Engineering, Inc.
Agnoli, Barber, & Brundage, Inc.
Boylan Environmental Consultants, Inc.

FOR
South Florida Water
Management District
APRIL 1999

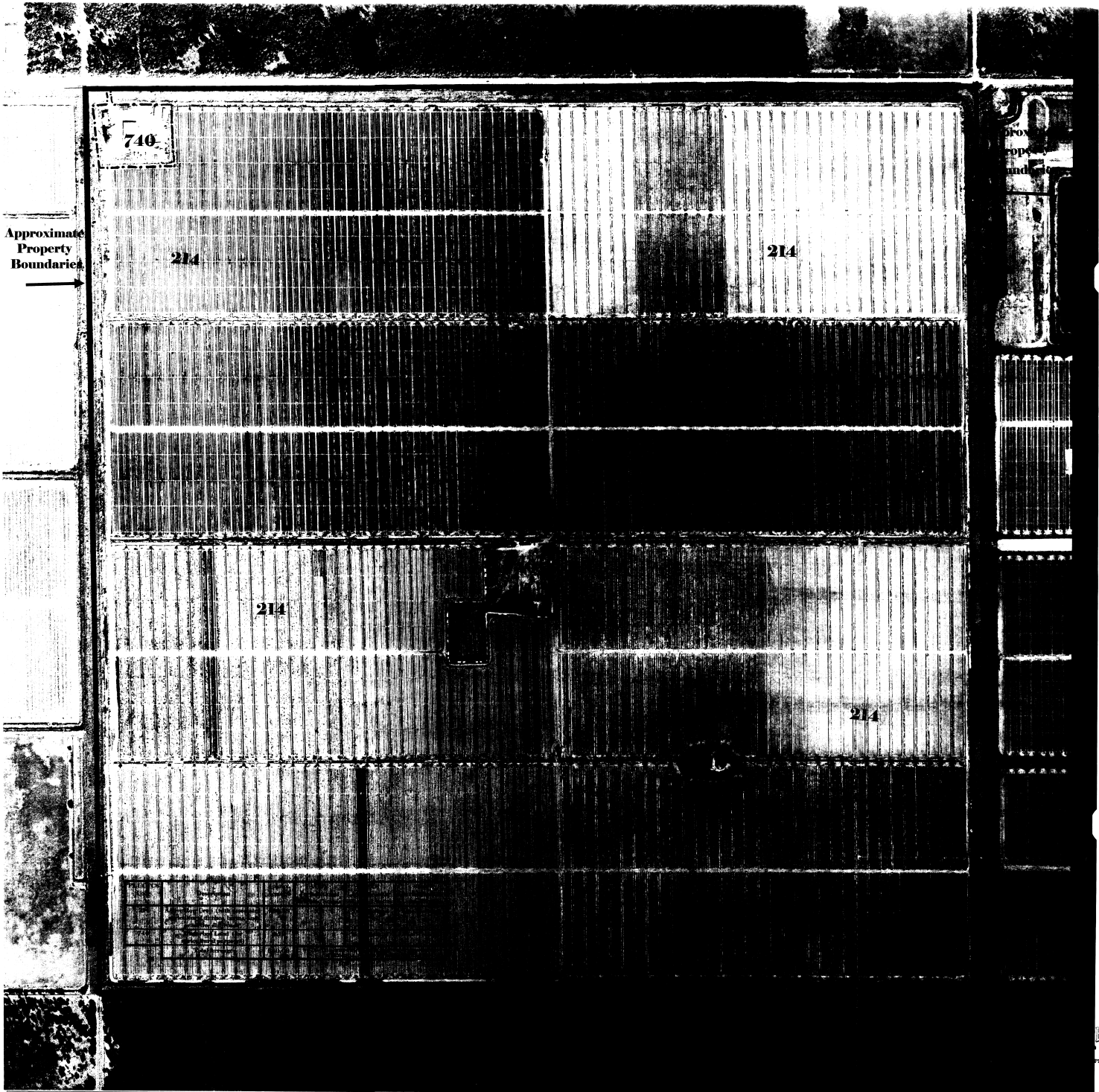
REGIONAL FLOW WAYS
South Lee County Watershed Plan

AMERICAN
ENGINEERING
DESIGN
04-0000-0000-0000

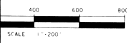


PREPARED FOR:
CORCSREW GROWERS, INC.
 700 S.W. 38th
 FORT LAUDERDALE, FL 33404
 (954) 684-7142

NO.	DATE	DESCRIPTION
1	11-13-02	PRELIMINARY CONCEPT PLAN
2	1-28-03	REVISIONS TO CONCEPT PLAN
3	3-10-03	CONCEPT PLAN
4	5-15-03	CONCEPT PLAN
5	8-15-03	CONCEPT PLAN
6	11-15-03	CONCEPT PLAN
7	1-15-04	CONCEPT PLAN
8	3-15-04	CONCEPT PLAN
9	5-15-04	CONCEPT PLAN
10	7-15-04	CONCEPT PLAN
11	9-15-04	CONCEPT PLAN
12	11-15-04	CONCEPT PLAN
13	1-15-05	CONCEPT PLAN
14	3-15-05	CONCEPT PLAN
15	5-15-05	CONCEPT PLAN
16	7-15-05	CONCEPT PLAN
17	9-15-05	CONCEPT PLAN
18	11-15-05	CONCEPT PLAN
19	1-15-06	CONCEPT PLAN
20	3-15-06	CONCEPT PLAN
21	5-15-06	CONCEPT PLAN
22	7-15-06	CONCEPT PLAN
23	9-15-06	CONCEPT PLAN
24	11-15-06	CONCEPT PLAN
25	1-15-07	CONCEPT PLAN
26	3-15-07	CONCEPT PLAN
27	5-15-07	CONCEPT PLAN
28	7-15-07	CONCEPT PLAN
29	9-15-07	CONCEPT PLAN
30	11-15-07	CONCEPT PLAN
31	1-15-08	CONCEPT PLAN
32	3-15-08	CONCEPT PLAN
33	5-15-08	CONCEPT PLAN
34	7-15-08	CONCEPT PLAN
35	9-15-08	CONCEPT PLAN
36	11-15-08	CONCEPT PLAN
37	1-15-09	CONCEPT PLAN
38	3-15-09	CONCEPT PLAN
39	5-15-09	CONCEPT PLAN
40	7-15-09	CONCEPT PLAN
41	9-15-09	CONCEPT PLAN
42	11-15-09	CONCEPT PLAN
43	1-15-10	CONCEPT PLAN
44	3-15-10	CONCEPT PLAN
45	5-15-10	CONCEPT PLAN
46	7-15-10	CONCEPT PLAN
47	9-15-10	CONCEPT PLAN
48	11-15-10	CONCEPT PLAN
49	1-15-11	CONCEPT PLAN
50	3-15-11	CONCEPT PLAN
51	5-15-11	CONCEPT PLAN
52	7-15-11	CONCEPT PLAN
53	9-15-11	CONCEPT PLAN
54	11-15-11	CONCEPT PLAN
55	1-15-12	CONCEPT PLAN
56	3-15-12	CONCEPT PLAN
57	5-15-12	CONCEPT PLAN
58	7-15-12	CONCEPT PLAN
59	9-15-12	CONCEPT PLAN
60	11-15-12	CONCEPT PLAN
61	1-15-13	CONCEPT PLAN
62	3-15-13	CONCEPT PLAN
63	5-15-13	CONCEPT PLAN
64	7-15-13	CONCEPT PLAN
65	9-15-13	CONCEPT PLAN
66	11-15-13	CONCEPT PLAN
67	1-15-14	CONCEPT PLAN
68	3-15-14	CONCEPT PLAN
69	5-15-14	CONCEPT PLAN
70	7-15-14	CONCEPT PLAN
71	9-15-14	CONCEPT PLAN
72	11-15-14	CONCEPT PLAN
73	1-15-15	CONCEPT PLAN
74	3-15-15	CONCEPT PLAN
75	5-15-15	CONCEPT PLAN
76	7-15-15	CONCEPT PLAN
77	9-15-15	CONCEPT PLAN
78	11-15-15	CONCEPT PLAN
79	1-15-16	CONCEPT PLAN
80	3-15-16	CONCEPT PLAN
81	5-15-16	CONCEPT PLAN
82	7-15-16	CONCEPT PLAN
83	9-15-16	CONCEPT PLAN
84	11-15-16	CONCEPT PLAN
85	1-15-17	CONCEPT PLAN
86	3-15-17	CONCEPT PLAN
87	5-15-17	CONCEPT PLAN
88	7-15-17	CONCEPT PLAN
89	9-15-17	CONCEPT PLAN
90	11-15-17	CONCEPT PLAN
91	1-15-18	CONCEPT PLAN
92	3-15-18	CONCEPT PLAN
93	5-15-18	CONCEPT PLAN
94	7-15-18	CONCEPT PLAN
95	9-15-18	CONCEPT PLAN
96	11-15-18	CONCEPT PLAN
97	1-15-19	CONCEPT PLAN
98	3-15-19	CONCEPT PLAN
99	5-15-19	CONCEPT PLAN
100	7-15-19	CONCEPT PLAN
101	9-15-19	CONCEPT PLAN
102	11-15-19	CONCEPT PLAN
103	1-15-20	CONCEPT PLAN
104	3-15-20	CONCEPT PLAN
105	5-15-20	CONCEPT PLAN
106	7-15-20	CONCEPT PLAN
107	9-15-20	CONCEPT PLAN
108	11-15-20	CONCEPT PLAN
109	1-15-21	CONCEPT PLAN
110	3-15-21	CONCEPT PLAN
111	5-15-21	CONCEPT PLAN
112	7-15-21	CONCEPT PLAN
113	9-15-21	CONCEPT PLAN
114	11-15-21	CONCEPT PLAN
115	1-15-22	CONCEPT PLAN
116	3-15-22	CONCEPT PLAN
117	5-15-22	CONCEPT PLAN
118	7-15-22	CONCEPT PLAN
119	9-15-22	CONCEPT PLAN
120	11-15-22	CONCEPT PLAN
121	1-15-23	CONCEPT PLAN
122	3-15-23	CONCEPT PLAN
123	5-15-23	CONCEPT PLAN
124	7-15-23	CONCEPT PLAN
125	9-15-23	CONCEPT PLAN
126	11-15-23	CONCEPT PLAN
127	1-15-24	CONCEPT PLAN
128	3-15-24	CONCEPT PLAN
129	5-15-24	CONCEPT PLAN
130	7-15-24	CONCEPT PLAN
131	9-15-24	CONCEPT PLAN
132	11-15-24	CONCEPT PLAN
133	1-15-25	CONCEPT PLAN
134	3-15-25	CONCEPT PLAN
135	5-15-25	CONCEPT PLAN
136	7-15-25	CONCEPT PLAN
137	9-15-25	CONCEPT PLAN
138	11-15-25	CONCEPT PLAN
139	1-15-26	CONCEPT PLAN
140	3-15-26	CONCEPT PLAN
141	5-15-26	CONCEPT PLAN
142	7-15-26	CONCEPT PLAN
143	9-15-26	CONCEPT PLAN
144	11-15-26	CONCEPT PLAN
145	1-15-27	CONCEPT PLAN
146	3-15-27	CONCEPT PLAN
147	5-15-27	CONCEPT PLAN
148	7-15-27	CONCEPT PLAN
149	9-15-27	CONCEPT PLAN
150	11-15-27	CONCEPT PLAN
151	1-15-28	CONCEPT PLAN
152	3-15-28	CONCEPT PLAN
153	5-15-28	CONCEPT PLAN
154	7-15-28	CONCEPT PLAN
155	9-15-28	CONCEPT PLAN
156	11-15-28	CONCEPT PLAN
157	1-15-29	CONCEPT PLAN
158	3-15-29	CONCEPT PLAN
159	5-15-29	CONCEPT PLAN
160	7-15-29	CONCEPT PLAN
161	9-15-29	CONCEPT PLAN
162	11-15-29	CONCEPT PLAN
163	1-15-30	CONCEPT PLAN
164	3-15-30	CONCEPT PLAN
165	5-15-30	CONCEPT PLAN
166	7-15-30	CONCEPT PLAN
167	9-15-30	CONCEPT PLAN
168	11-15-30	CONCEPT PLAN
169	1-15-31	CONCEPT PLAN
170	3-15-31	CONCEPT PLAN
171	5-15-31	CONCEPT PLAN
172	7-15-31	CONCEPT PLAN
173	9-15-31	CONCEPT PLAN
174	11-15-31	CONCEPT PLAN
175	1-15-32	CONCEPT PLAN
176	3-15-32	CONCEPT PLAN
177	5-15-32	CONCEPT PLAN
178	7-15-32	CONCEPT PLAN
179	9-15-32	CONCEPT PLAN
180	11-15-32	CONCEPT PLAN
181	1-15-33	CONCEPT PLAN
182	3-15-33	CONCEPT PLAN
183	5-15-33	CONCEPT PLAN
184	7-15-33	CONCEPT PLAN
185	9-15-33	CONCEPT PLAN
186	11-15-33	CONCEPT PLAN
187	1-15-34	CONCEPT PLAN
188	3-15-34	CONCEPT PLAN
189	5-15-34	CONCEPT PLAN
190	7-15-34	CONCEPT PLAN
191	9-15-34	CONCEPT PLAN
192	11-15-34	CONCEPT PLAN
193	1-15-35	CONCEPT PLAN
194	3-15-35	CONCEPT PLAN
195	5-15-35	CONCEPT PLAN
196	7-15-35	CONCEPT PLAN
197	9-15-35	CONCEPT PLAN
198	11-15-35	CONCEPT PLAN
199	1-15-36	CONCEPT PLAN
200	3-15-36	CONCEPT PLAN
201	5-15-36	CONCEPT PLAN
202	7-15-36	CONCEPT PLAN
203	9-15-36	CONCEPT PLAN
204	11-15-36	CONCEPT PLAN
205	1-15-37	CONCEPT PLAN
206	3-15-37	CONCEPT PLAN
207	5-15-37	CONCEPT PLAN
208	7-15-37	CONCEPT PLAN
209	9-15-37	CONCEPT PLAN
210	11-15-37	CONCEPT PLAN
211	1-15-38	CONCEPT PLAN
212	3-15-38	CONCEPT PLAN
213	5-15-38	CONCEPT PLAN
214	7-15-38	CONCEPT PLAN
215	9-15-38	CONCEPT PLAN
216	11-15-38	CONCEPT PLAN
217	1-15-39	CONCEPT PLAN
218	3-15-39	CONCEPT PLAN
219	5-15-39	CONCEPT PLAN
220	7-15-39	CONCEPT PLAN
221	9-15-39	CONCEPT PLAN
222	11-15-39	CONCEPT PLAN
223	1-15-40	CONCEPT PLAN
224	3-15-40	CONCEPT PLAN
225	5-15-40	CONCEPT PLAN
226	7-15-40	CONCEPT PLAN
227	9-15-40	CONCEPT PLAN
228	11-15-40	CONCEPT PLAN
229	1-15-41	CONCEPT PLAN
230	3-15-41	CONCEPT PLAN
231	5-15-41	CONCEPT PLAN
232	7-15-41	CONCEPT PLAN
233	9-15-41	CONCEPT PLAN
234	11-15-41	CONCEPT PLAN
235	1-15-42	CONCEPT PLAN
236	3-15-42	CONCEPT PLAN
237	5-15-42	CONCEPT PLAN
238	7-15-42	CONCEPT PLAN
239	9-15-42	CONCEPT PLAN
240	11-15-42	CONCEPT PLAN
241	1-15-43	CONCEPT PLAN
242	3-15-43	CONCEPT PLAN
243	5-15-43	CONCEPT PLAN
244	7-15-43	CONCEPT PLAN
245	9-15-43	CONCEPT PLAN
246	11-15-43	CONCEPT PLAN
247	1-15-44	CONCEPT PLAN
248	3-15-44	CONCEPT PLAN
249	5-15-44	CONCEPT PLAN
250	7-15-44	CONCEPT PLAN
251	9-15-44	CONCEPT PLAN
252	11-15-44	CONCEPT PLAN
253	1-15-45	CONCEPT PLAN
254	3-15-45	CONCEPT PLAN
255	5-15-45	CONCEPT PLAN
256	7-15-45	CONCEPT PLAN
257	9-15-45	CONCEPT PLAN
258	11-15-45	CONCEPT PLAN
259	1-15-46	CONCEPT PLAN
260	3-15-46	CONCEPT PLAN
261	5-15-46	CONCEPT PLAN
262	7-15-46	CONCEPT PLAN
263	9-15-46	CONCEPT PLAN
264	11-15-46	CONCEPT PLAN
265	1-15-47	CONCEPT PLAN
266	3-15-47	CONCEPT PLAN
267	5-15-47	CONCEPT PLAN
268	7-15-47	CONCEPT PLAN
269	9-15-47	CONCEPT PLAN
270	11-15-47	CONCEPT PLAN
271	1-15-48	CONCEPT PLAN
272	3-15-48	CONCEPT PLAN
273	5-15-48	CONCEPT PLAN
274	7-15-48	CONCEPT PLAN
275	9-15-48	CONCEPT PLAN
276	11-15-48	CONCEPT PLAN
277	1-15-49	CONCEPT PLAN
278	3-15-49	CONCEPT PLAN
279	5-15-49	CONCEPT PLAN
280	7-15-49	CONCEPT PLAN
281	9-15-49	CONCEPT PLAN
282	11-15-49	CONCEPT PLAN
283	1-15-50	CONCEPT PLAN
284	3-15-50	CONCEPT PLAN
285	5-15-50	CONCEPT PLAN
286	7-15-50	CONCEPT PLAN
287	9-15-50	CONCEPT PLAN
288	11-15-50	CONCEPT PLAN
289	1-15-51	CONCEPT PLAN
290	3-15-51	CONCEPT PLAN
291	5-15-51	CONCEPT PLAN
292	7-15-51	CONCEPT PLAN
293	9-15-51	CONCEPT PLAN
294	11-15-51	CONCEPT PLAN
295	1-15-52	CONCEPT PLAN
296	3-15-52	CONCEPT PLAN
297	5-15-52	CONCEPT PLAN
298	7-15-52	CONCEPT PLAN
299	9-15-52	CONCEPT PLAN
300	11-15-52	CONCEPT PLAN
301	1-15-53	CONCEPT PLAN
302	3-15-53	CONCEPT PLAN
303	5-15-53	CONCEPT PLAN
304	7-15-53	CONCEPT PLAN
305	9-15-53	CONCEPT PLAN
306	11-15-53	CONCEPT PLAN
307	1-15-54	CONCEPT PLAN
308	3-15-54	CONCEPT PLAN
309	5-15-54	CONCEPT PLAN
310	7-15-54	CONCEPT PLAN
311	9-15-54	CONCEPT PLAN
312	11-15-54	CONCEPT PLAN
313	1-15-55	CONCEPT PLAN
314	3-15-55	CONCEPT PLAN
315	5-15-55	CONCEPT PLAN
316	7-15-55	CONCEPT PLAN
317	9-15-55	CONCEPT PLAN
318	11-15-55	CONCEPT PLAN



SOUTH FLORIDA WATER MANAGEMENT DISTRICT
 JURISDICTIONAL WETLAND DETERMINATION
 VERIFIED BY: _____
 DATE: _____



PREPARED BY THE FLORIDA DEPARTMENT OF TRANSPORTATION
 FOR THE FLORIDA DEPARTMENT OF REVENUE
 FOR ASSESSMENT PURPOSES ONLY



LEE COUNTY
 FLORIDA

SCALE	1" = 200'	SECTION	3	48 S	26 E	212 A	
PHOTO DATE	FEB. 1999						
PHOTO JOB NO.	JD-467						

SECTION 3 DCI 2000-00070

RECEIVED
 OCT 8 5 2000
 PERMIT CENTER

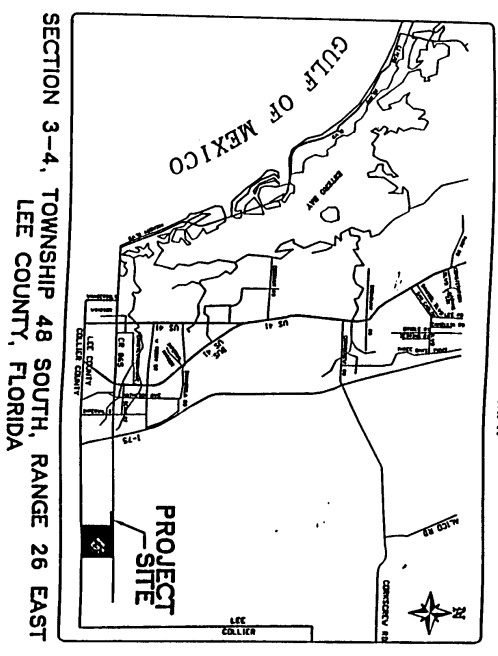
CORKSCREW GROWERS PROPERTY

SURFACE WATER MANAGEMENT DRAWINGS FOR AN ENVIRONMENTAL RESOURCE PERMIT

PREPARED FOR

CORKSCREW GROWERS, INC.
P.O. BOX 398
FT. MYERS, FLORIDA 33902
(941) 694-7742

SITE LOCATION MAP



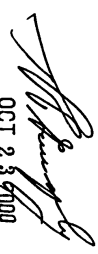
SECTION 3-4, TOWNSHIP 48 SOUTH, RANGE 26 EAST
LEE COUNTY, FLORIDA

INDEX OF SHEETS

SHEET	TITLE
1	COVER SHEET
2-3	MASTER SITE PLAN
4-5	DRAIAGE PLANS PAVING, GRADING, AND DRAINAGE DETAILS
6	AERIAL PHOTOGRAPH

Banka Engineering, Inc.

Professional Engineers, Planners & Land Surveyors
2150 GOODLETTE-FRANK ROAD - SUITE 701 NAPLES, FLORIDA 34102
PHONE: (941)403-8866 FAX: (941)403-8868
10511 SIX MILE CYPRESS PARKWAY - SUITE 101 FORT MYERS, FLORIDA 33912
PHONE: (941)939-5490 FAX: (941)939-2523

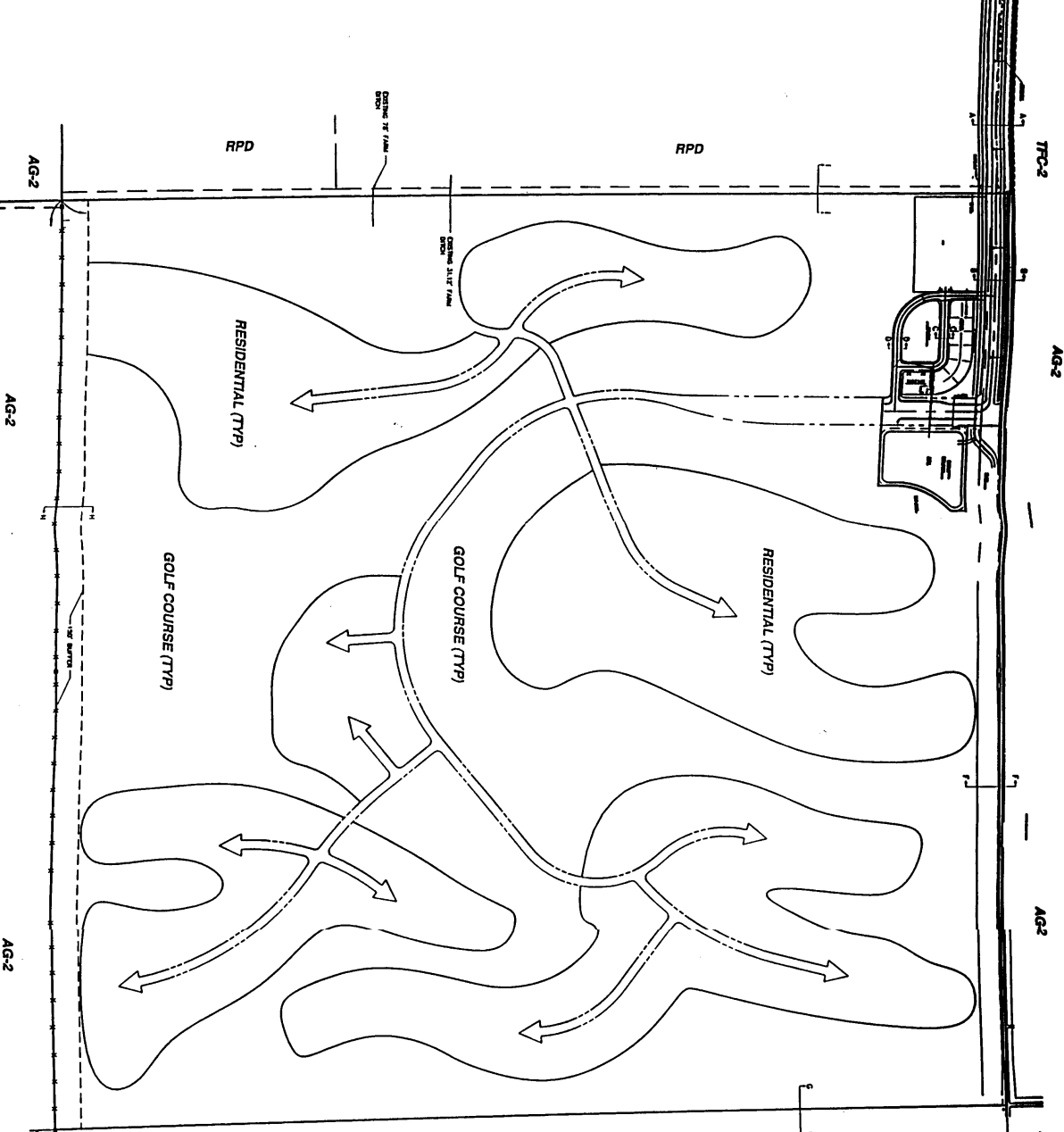

 OCT 23 2000

NO.	DATE	REVISIONS

PROPOSED FOR:
CORKSCREW GROWERS INC.
 17, 18, 19, 20, 21, 22, 23, 24, 25, 26, 27, 28, 29, 30, 31, 32, 33, 34, 35, 36, 37, 38, 39, 40, 41, 42, 43, 44, 45, 46, 47, 48, 49, 50, 51, 52, 53, 54, 55, 56, 57, 58, 59, 60, 61, 62, 63, 64, 65, 66, 67, 68, 69, 70, 71, 72, 73, 74, 75, 76, 77, 78, 79, 80, 81, 82, 83, 84, 85, 86, 87, 88, 89, 90, 91, 92, 93, 94, 95, 96, 97, 98, 99, 100, 101, 102, 103, 104, 105, 106, 107, 108, 109, 110, 111, 112, 113, 114, 115, 116, 117, 118, 119, 120, 121, 122, 123, 124, 125, 126, 127, 128, 129, 130, 131, 132, 133, 134, 135, 136, 137, 138, 139, 140, 141, 142, 143, 144, 145, 146, 147, 148, 149, 150, 151, 152, 153, 154, 155, 156, 157, 158, 159, 160, 161, 162, 163, 164, 165, 166, 167, 168, 169, 170, 171, 172, 173, 174, 175, 176, 177, 178, 179, 180, 181, 182, 183, 184, 185, 186, 187, 188, 189, 190, 191, 192, 193, 194, 195, 196, 197, 198, 199, 200, 201, 202, 203, 204, 205, 206, 207, 208, 209, 210, 211, 212, 213, 214, 215, 216, 217, 218, 219, 220, 221, 222, 223, 224, 225, 226, 227, 228, 229, 230, 231, 232, 233, 234, 235, 236, 237, 238, 239, 240, 241, 242, 243, 244, 245, 246, 247, 248, 249, 250, 251, 252, 253, 254, 255, 256, 257, 258, 259, 260, 261, 262, 263, 264, 265, 266, 267, 268, 269, 270, 271, 272, 273, 274, 275, 276, 277, 278, 279, 280, 281, 282, 283, 284, 285, 286, 287, 288, 289, 290, 291, 292, 293, 294, 295, 296, 297, 298, 299, 300, 301, 302, 303, 304, 305, 306, 307, 308, 309, 310, 311, 312, 313, 314, 315, 316, 317, 318, 319, 320, 321, 322, 323, 324, 325, 326, 327, 328, 329, 330, 331, 332, 333, 334, 335, 336, 337, 338, 339, 340, 341, 342, 343, 344, 345, 346, 347, 348, 349, 350, 351, 352, 353, 354, 355, 356, 357, 358, 359, 360, 361, 362, 363, 364, 365, 366, 367, 368, 369, 370, 371, 372, 373, 374, 375, 376, 377, 378, 379, 380, 381, 382, 383, 384, 385, 386, 387, 388, 389, 390, 391, 392, 393, 394, 395, 396, 397, 398, 399, 400, 401, 402, 403, 404, 405, 406, 407, 408, 409, 410, 411, 412, 413, 414, 415, 416, 417, 418, 419, 420, 421, 422, 423, 424, 425, 426, 427, 428, 429, 430, 431, 432, 433, 434, 435, 436, 437, 438, 439, 440, 441, 442, 443, 444, 445, 446, 447, 448, 449, 450, 451, 452, 453, 454, 455, 456, 457, 458, 459, 460, 461, 462, 463, 464, 465, 466, 467, 468, 469, 470, 471, 472, 473, 474, 475, 476, 477, 478, 479, 480, 481, 482, 483, 484, 485, 486, 487, 488, 489, 490, 491, 492, 493, 494, 495, 496, 497, 498, 499, 500, 501, 502, 503, 504, 505, 506, 507, 508, 509, 510, 511, 512, 513, 514, 515, 516, 517, 518, 519, 520, 521, 522, 523, 524, 525, 526, 527, 528, 529, 530, 531, 532, 533, 534, 535, 536, 537, 538, 539, 540, 541, 542, 543, 544, 545, 546, 547, 548, 549, 550, 551, 552, 553, 554, 555, 556, 557, 558, 559, 560, 561, 562, 563, 564, 565, 566, 567, 568, 569, 570, 571, 572, 573, 574, 575, 576, 577, 578, 579, 580, 581, 582, 583, 584, 585, 586, 587, 588, 589, 590, 591, 592, 593, 594, 595, 596, 597, 598, 599, 600, 601, 602, 603, 604, 605, 606, 607, 608, 609, 610, 611, 612, 613, 614, 615, 616, 617, 618, 619, 620, 621, 622, 623, 624, 625, 626, 627, 628, 629, 630, 631, 632, 633, 634, 635, 636, 637, 638, 639, 640, 641, 642, 643, 644, 645, 646, 647, 648, 649, 650, 651, 652, 653, 654, 655, 656, 657, 658, 659, 660, 661, 662, 663, 664, 665, 666, 667, 668, 669, 670, 671, 672, 673, 674, 675, 676, 677, 678, 679, 680, 681, 682, 683, 684, 685, 686, 687, 688, 689, 690, 691, 692, 693, 694, 695, 696, 697, 698, 699, 700, 701, 702, 703, 704, 705, 706, 707, 708, 709, 710, 711, 712, 713, 714, 715, 716, 717, 718, 719, 720, 721, 722, 723, 724, 725, 726, 727, 728, 729, 730, 731, 732, 733, 734, 735, 736, 737, 738, 739, 740, 741, 742, 743, 744, 745, 746, 747, 748, 749, 750, 751, 752, 753, 754, 755, 756, 757, 758, 759, 760, 761, 762, 763, 764, 765, 766, 767, 768, 769, 770, 771, 772, 773, 774, 775, 776, 777, 778, 779, 780, 781, 782, 783, 784, 785, 786, 787, 788, 789, 790, 791, 792, 793, 794, 795, 796, 797, 798, 799, 800, 801, 802, 803, 804, 805, 806, 807, 808, 809, 810, 811, 812, 813, 814, 815, 816, 817, 818, 819, 820, 821, 822, 823, 824, 825, 826, 827, 828, 829, 830, 831, 832, 833, 834, 835, 836, 837, 838, 839, 840, 841, 842, 843, 844, 845, 846, 847, 848, 849, 850, 851, 852, 853, 854, 855, 856, 857, 858, 859, 860, 861, 862, 863, 864, 865, 866, 867, 868, 869, 870, 871, 872, 873, 874, 875, 876, 877, 878, 879, 880, 881, 882, 883, 884, 885, 886, 887, 888, 889, 890, 891, 892, 893, 894, 895, 896, 897, 898, 899, 900, 901, 902, 903, 904, 905, 906, 907, 908, 909, 910, 911, 912, 913, 914, 915, 916, 917, 918, 919, 920, 921, 922, 923, 924, 925, 926, 927, 928, 929, 930, 931, 932, 933, 934, 935, 936, 937, 938, 939, 940, 941, 942, 943, 944, 945, 946, 947, 948, 949, 950, 951, 952, 953, 954, 955, 956, 957, 958, 959, 960, 961, 962, 963, 964, 965, 966, 967, 968, 969, 970, 971, 972, 973, 974, 975, 976, 977, 978, 979, 980, 981, 982, 983, 984, 985, 986, 987, 988, 989, 990, 991, 992, 993, 994, 995, 996, 997, 998, 999, 1000

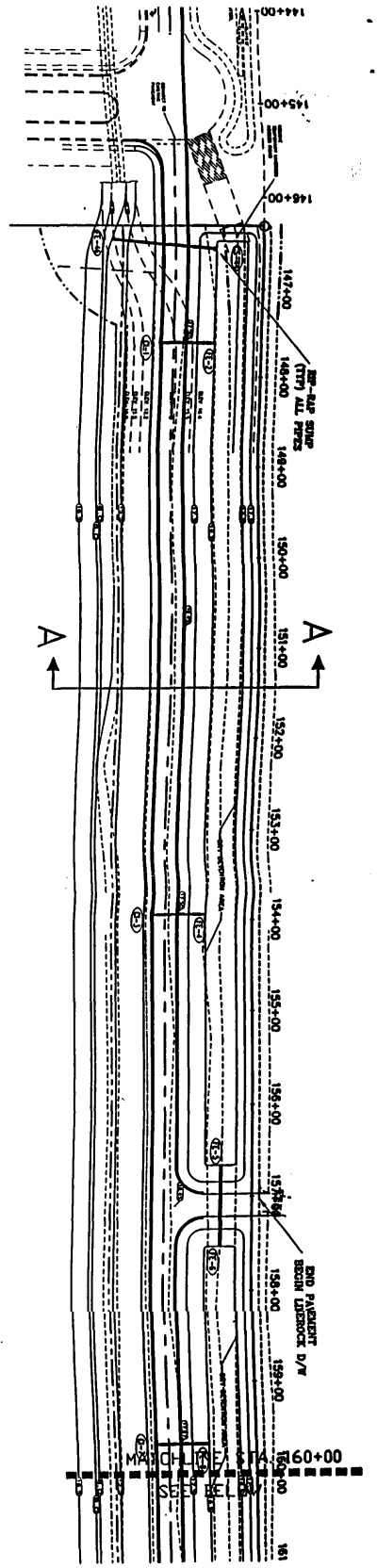
Banks Engineering, Inc.
 Professional Engineers, Planners & Land Surveyors
 1101 W. 1st Street, Suite 100, Fort Lauderdale, Florida 33304
 Phone: (954) 571-1101 Fax: (954) 571-1102
 Website: www.banks-engineering.com

CORKSCREW GROWERS PROPERTY
 MASTER SITE PLAN
 LEE COUNTY, FL
 DATE: 1-18-00
 PROJECT: 1200
 SHEET: 1 OF 1
 SCALE: AS SHOWN
 DRAWN BY: [Signature]
 CHECKED BY: [Signature]
 DATE: 1-18-00
 SHEET: 1 OF 1
 SCALE: AS SHOWN



CONCEPTUAL PORTION OF PROJECT = 620.14 AC
 CONCEPT & OPERATE PORTION OF PROJECT = 78.34 AC
 TOTAL = 698.48 AC

[Signature]
 OCT 23 2000

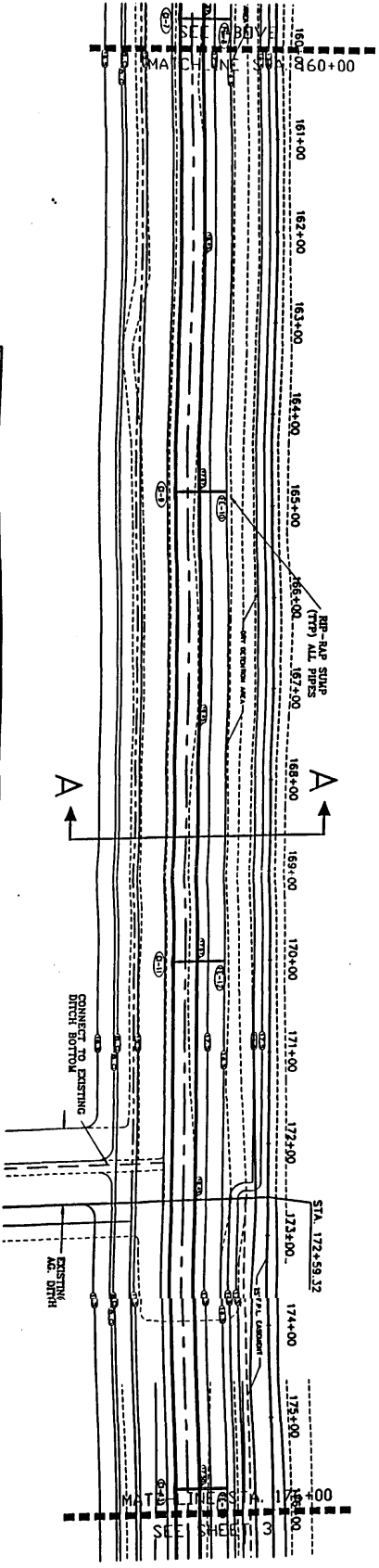


STRUCTURE DATA		BRANCH STRUCTURE & PIPE MAIN		INSTALLATIONS	
FROM UPSTREAM STRUCTURE NO.	TO DOWNSTREAM STRUCTURE NO.	CONNECTING PIPE DIA.	CONNECTING PIPE TYPE	CONNECTING PIPE MATERIAL	CONNECTION POINT
101	102	12"	CONCRETE	CONCRETE	101
102	103	12"	CONCRETE	CONCRETE	102
103	104	12"	CONCRETE	CONCRETE	103
104	105	12"	CONCRETE	CONCRETE	104
105	106	12"	CONCRETE	CONCRETE	105
106	107	12"	CONCRETE	CONCRETE	106
107	108	12"	CONCRETE	CONCRETE	107
108	109	12"	CONCRETE	CONCRETE	108
109	110	12"	CONCRETE	CONCRETE	109
110	111	12"	CONCRETE	CONCRETE	110
111	112	12"	CONCRETE	CONCRETE	111
112	113	12"	CONCRETE	CONCRETE	112
113	114	12"	CONCRETE	CONCRETE	113
114	115	12"	CONCRETE	CONCRETE	114
115	116	12"	CONCRETE	CONCRETE	115
116	117	12"	CONCRETE	CONCRETE	116
117	118	12"	CONCRETE	CONCRETE	117
118	119	12"	CONCRETE	CONCRETE	118
119	120	12"	CONCRETE	CONCRETE	119
120	121	12"	CONCRETE	CONCRETE	120
121	122	12"	CONCRETE	CONCRETE	121
122	123	12"	CONCRETE	CONCRETE	122
123	124	12"	CONCRETE	CONCRETE	123
124	125	12"	CONCRETE	CONCRETE	124
125	126	12"	CONCRETE	CONCRETE	125
126	127	12"	CONCRETE	CONCRETE	126
127	128	12"	CONCRETE	CONCRETE	127
128	129	12"	CONCRETE	CONCRETE	128
129	130	12"	CONCRETE	CONCRETE	129
130	131	12"	CONCRETE	CONCRETE	130
131	132	12"	CONCRETE	CONCRETE	131
132	133	12"	CONCRETE	CONCRETE	132
133	134	12"	CONCRETE	CONCRETE	133
134	135	12"	CONCRETE	CONCRETE	134
135	136	12"	CONCRETE	CONCRETE	135
136	137	12"	CONCRETE	CONCRETE	136
137	138	12"	CONCRETE	CONCRETE	137
138	139	12"	CONCRETE	CONCRETE	138
139	140	12"	CONCRETE	CONCRETE	139
140	141	12"	CONCRETE	CONCRETE	140
141	142	12"	CONCRETE	CONCRETE	141
142	143	12"	CONCRETE	CONCRETE	142
143	144	12"	CONCRETE	CONCRETE	143
144	145	12"	CONCRETE	CONCRETE	144
145	146	12"	CONCRETE	CONCRETE	145
146	147	12"	CONCRETE	CONCRETE	146
147	148	12"	CONCRETE	CONCRETE	147
148	149	12"	CONCRETE	CONCRETE	148
149	150	12"	CONCRETE	CONCRETE	149
150	151	12"	CONCRETE	CONCRETE	150
151	152	12"	CONCRETE	CONCRETE	151
152	153	12"	CONCRETE	CONCRETE	152
153	154	12"	CONCRETE	CONCRETE	153
154	155	12"	CONCRETE	CONCRETE	154
155	156	12"	CONCRETE	CONCRETE	155
156	157	12"	CONCRETE	CONCRETE	156
157	158	12"	CONCRETE	CONCRETE	157
158	159	12"	CONCRETE	CONCRETE	158
159	160	12"	CONCRETE	CONCRETE	159
160	161	12"	CONCRETE	CONCRETE	160

- NOTE TO BRANCH STRUCTURE DATA TABLE:
1. LOCATION OF THE STRUCTURE IS SHOWN BY THE STRUCTURE NUMBER.
 2. STRUCTURE TYPES ARE LISTED WITH THE PIPE DIAMETER AND BRANCHING STRUCTURES.
 3. STRUCTURE TYPES ARE LISTED WITH THE PIPE DIAMETER AND BRANCHING STRUCTURES.
 4. STRUCTURE TYPES ARE LISTED WITH THE PIPE DIAMETER AND BRANCHING STRUCTURES.
 5. STRUCTURE TYPES ARE LISTED WITH THE PIPE DIAMETER AND BRANCHING STRUCTURES.
 6. STRUCTURE TYPES ARE LISTED WITH THE PIPE DIAMETER AND BRANCHING STRUCTURES.
 7. STRUCTURE TYPES ARE LISTED WITH THE PIPE DIAMETER AND BRANCHING STRUCTURES.
 8. STRUCTURE TYPES ARE LISTED WITH THE PIPE DIAMETER AND BRANCHING STRUCTURES.
 9. STRUCTURE TYPES ARE LISTED WITH THE PIPE DIAMETER AND BRANCHING STRUCTURES.
 10. STRUCTURE TYPES ARE LISTED WITH THE PIPE DIAMETER AND BRANCHING STRUCTURES.

PAVING / GRADING / DRAINAGE LEGEND

EXISTING GRADE
 DRAINAGE STRUCTURE DESIGNATOR NUMBER
 DRAINAGE PIPE
 DESIGN GRADE
 CROSS SECTION DESIGNATOR



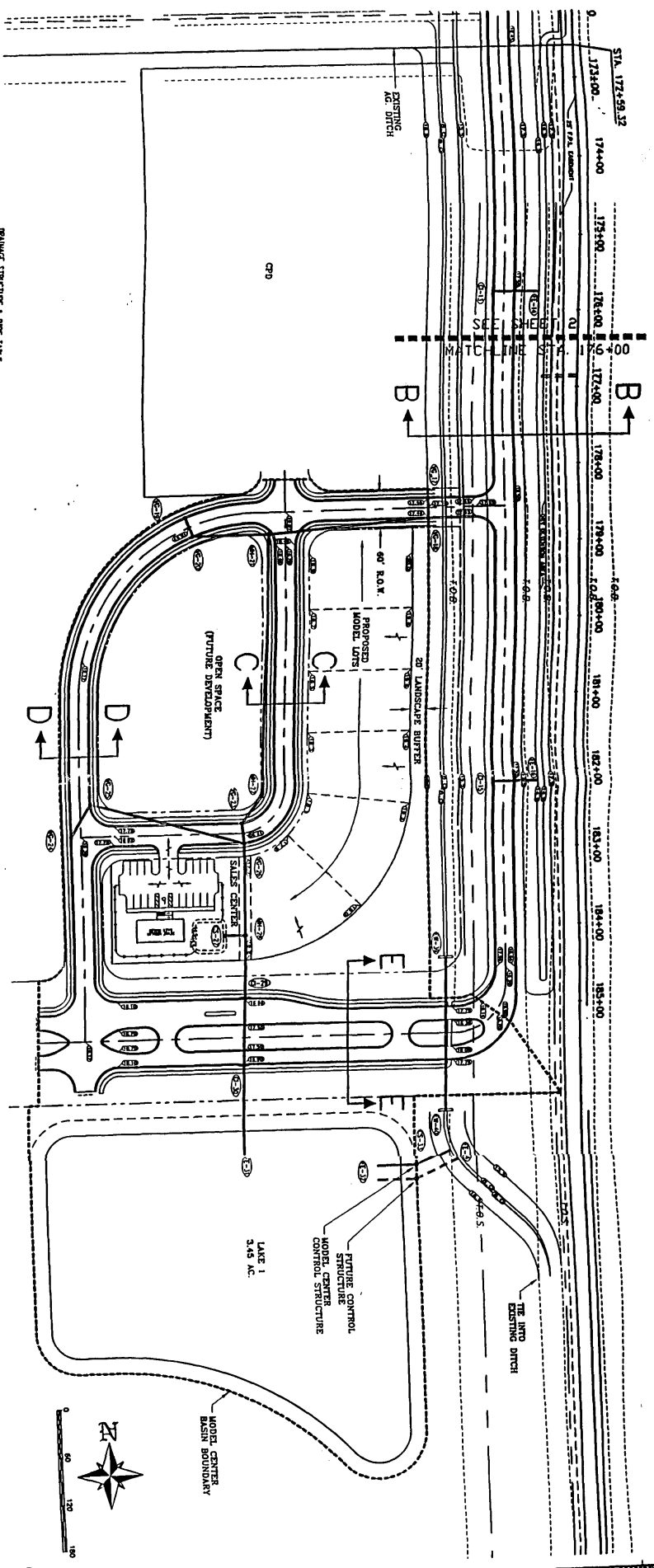
CORKSCREW GROWERS INC.
 701 W. 10th St.
 Ft. Pierce, Florida 34949
 Ph: (888) 384-7733

Bartlett Engineering, Inc.
 Professional Engineers, Planners & Land Surveyors
 1001 W. 10th St., Suite 100
 Ft. Pierce, Florida 34949
 Phone: (888) 384-7733 Fax: (888) 384-7734

DRAINAGE PLAN - BONITA BEACH ROAD EXTENSION
CORKSCREW GROWERS PROPERTY
 LEE COUNTY, FLORIDA

DATE	PROJECT	ISSUE	SCALE	SHEET	TOTAL
11-18-10	1580	1	AS SHOWN	2	2

[Signature]
 11/18/10

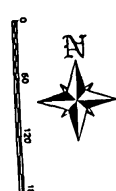


STRUCTURE DATA		CONNECTING PIPE DATA		REMARKS
FOR UPSTREAM STRUCTURE NO.	TO DOWNSTREAM STRUCTURE NO.	STRUCTURE ELEVATION	CONNECTING PIPE INVERT AT UPSTREAM STRUCTURE	
1734	1735	173.0	173.0	
1735	1736	173.0	173.0	
1736	1737	173.0	173.0	
1737	1738	173.0	173.0	
1738	1739	173.0	173.0	
1739	1740	173.0	173.0	
1740	1741	173.0	173.0	
1741	1742	173.0	173.0	
1742	1743	173.0	173.0	
1743	1744	173.0	173.0	
1744	1745	173.0	173.0	
1745	1746	173.0	173.0	
1746	1747	173.0	173.0	
1747	1748	173.0	173.0	
1748	1749	173.0	173.0	
1749	1750	173.0	173.0	
1750	1751	173.0	173.0	
1751	1752	173.0	173.0	
1752	1753	173.0	173.0	
1753	1754	173.0	173.0	
1754	1755	173.0	173.0	
1755	1756	173.0	173.0	
1756	1757	173.0	173.0	
1757	1758	173.0	173.0	
1758	1759	173.0	173.0	
1759	1760	173.0	173.0	
1760	1761	173.0	173.0	
1761	1762	173.0	173.0	
1762	1763	173.0	173.0	
1763	1764	173.0	173.0	
1764	1765	173.0	173.0	
1765	1766	173.0	173.0	
1766	1767	173.0	173.0	
1767	1768	173.0	173.0	
1768	1769	173.0	173.0	
1769	1770	173.0	173.0	
1770	1771	173.0	173.0	
1771	1772	173.0	173.0	
1772	1773	173.0	173.0	
1773	1774	173.0	173.0	
1774	1775	173.0	173.0	
1775	1776	173.0	173.0	
1776	1777	173.0	173.0	
1777	1778	173.0	173.0	
1778	1779	173.0	173.0	
1779	1780	173.0	173.0	
1780	1781	173.0	173.0	
1781	1782	173.0	173.0	
1782	1783	173.0	173.0	
1783	1784	173.0	173.0	
1784	1785	173.0	173.0	
1785	1786	173.0	173.0	
1786	1787	173.0	173.0	
1787	1788	173.0	173.0	
1788	1789	173.0	173.0	
1789	1790	173.0	173.0	
1790	1791	173.0	173.0	
1791	1792	173.0	173.0	
1792	1793	173.0	173.0	
1793	1794	173.0	173.0	
1794	1795	173.0	173.0	
1795	1796	173.0	173.0	
1796	1797	173.0	173.0	
1797	1798	173.0	173.0	
1798	1799	173.0	173.0	
1799	1800	173.0	173.0	
1800	1801	173.0	173.0	
1801	1802	173.0	173.0	
1802	1803	173.0	173.0	
1803	1804	173.0	173.0	
1804	1805	173.0	173.0	
1805	1806	173.0	173.0	
1806	1807	173.0	173.0	
1807	1808	173.0	173.0	
1808	1809	173.0	173.0	
1809	1810	173.0	173.0	
1810	1811	173.0	173.0	
1811	1812	173.0	173.0	
1812	1813	173.0	173.0	
1813	1814	173.0	173.0	
1814	1815	173.0	173.0	
1815	1816	173.0	173.0	
1816	1817	173.0	173.0	
1817	1818	173.0	173.0	
1818	1819	173.0	173.0	
1819	1820	173.0	173.0	
1820	1821	173.0	173.0	
1821	1822	173.0	173.0	
1822	1823	173.0	173.0	
1823	1824	173.0	173.0	
1824	1825	173.0	173.0	
1825	1826	173.0	173.0	
1826	1827	173.0	173.0	
1827	1828	173.0	173.0	
1828	1829	173.0	173.0	
1829	1830	173.0	173.0	
1830	1831	173.0	173.0	
1831	1832	173.0	173.0	
1832	1833	173.0	173.0	
1833	1834	173.0	173.0	
1834	1835	173.0	173.0	
1835	1836	173.0	173.0	
1836	1837	173.0	173.0	
1837	1838	173.0	173.0	
1838	1839	173.0	173.0	
1839	1840	173.0	173.0	
1840	1841	173.0	173.0	
1841	1842	173.0	173.0	
1842	1843	173.0	173.0	
1843	1844	173.0	173.0	
1844	1845	173.0	173.0	
1845	1846	173.0	173.0	
1846	1847	173.0	173.0	
1847	1848	173.0	173.0	
1848	1849	173.0	173.0	
1849	1850	173.0	173.0	
1850	1851	173.0	173.0	

- DATE TO BE USED: 10/11/2010
1. STRUCTURE LAYOUT INCLUDING ALL PIPE, INVERT ELEVATION AND THE PIPE CONNECTIONS TO THE DOWNSTREAM.
 2. OPEN SPACE (FUTURE DEVELOPMENT) TO BE USED FOR FUTURE DEVELOPMENT.
 3. PROPOSED MODEL LOTS TO BE USED FOR FUTURE DEVELOPMENT.
 4. LAYOUT AND ELEVATION OF THE EXISTING AND PROPOSED CONTROL STRUCTURES TO BE USED FOR FUTURE DEVELOPMENT.
 5. LAYOUT AND ELEVATION OF THE EXISTING AND PROPOSED CONTROL STRUCTURES TO BE USED FOR FUTURE DEVELOPMENT.
 6. LAYOUT AND ELEVATION OF THE EXISTING AND PROPOSED CONTROL STRUCTURES TO BE USED FOR FUTURE DEVELOPMENT.

PAVING/GRADING/DRAINAGE LEGEND

- EXISTING GRADE
- - - DRAINAGE STRUCTURE DESIGNATOR NUMBER
- DRAINAGE PIPE
- DESIGN GRADE
- GROSS SECTION DESIGNATOR



CORKSCREW GROWERS INC.

1700 S.W. 10th Ave
Fort Lauderdale, Florida 33304
Tel: (954) 571-1111

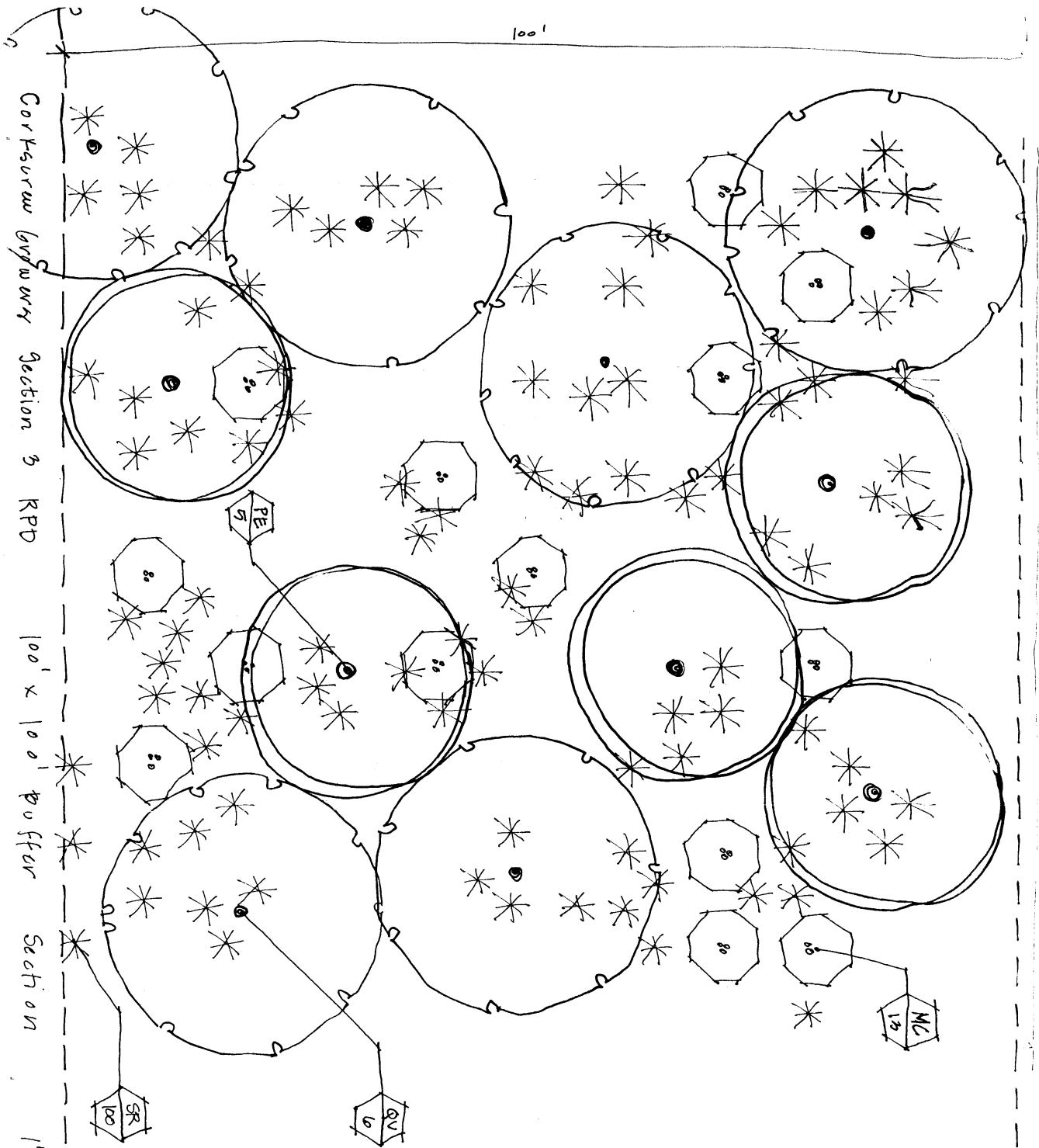
Burke Engineering, Inc.

Professional Engineers, Planners & Land Surveyors
1000 S.W. 10th Ave, Suite 100
Fort Lauderdale, Florida 33304
Tel: (954) 571-1111

**DRAINAGE PLAN - BONITA BEACH ROAD EXTENSION AND MODEL CENTER
CORKSCREW GROWERS PROPERTY
COLLIER COUNTY, FLORIDA**

DATE	PROJECT	DESIGNER	CHECKER	SCALE	SHEET NO.	TOTAL SHEETS
10-11-10	1700	SW	SW	AS SHOWN	3	3

OCT 11 2010



Corkscuraw
 100' x 100' buffer
 Section 3 RPD
 Section

1" = 10'
 DPT 2000-00074
 20059

Stephen J. Trudnak
 12/16/00

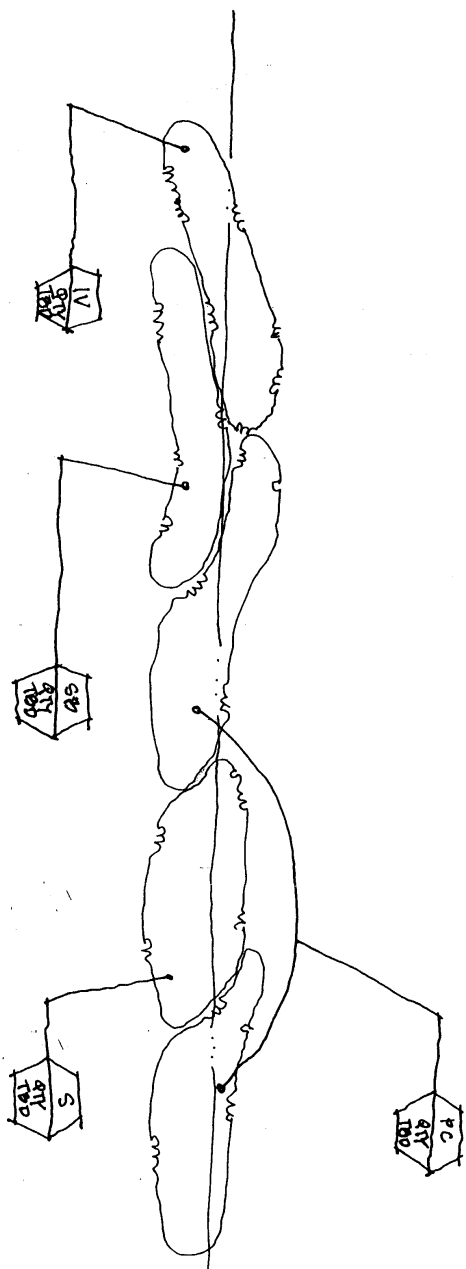
STEPHEN J. TRUDNAK, P.A.
 LANDSCAPE ARCHITECTURE AND PLANNING
 3461 Bonita Bay Boulevard • Suite 224
 Bonita Springs, Florida 34134
 (941) 495-0464 • FAX (941) 495-8486

fine grasses as necessary to cover
 new planting areas. Bahia
 will over time place it
 derived. Temporary irrigation
 to maintain new plant materials
 as derived.

PLANT LIST	PERMIT COUNTER
10 MC	Myrica carifera Myrtle 10 gal.
5 PE	Pinus allothi Slash Pine 10 gal.
6 QV	Quercus virginiana Live Oak 10' o.k. container
100 SR	Sarcocoea repens Palmetto 9 gal.

RECEIVED
 DEC 27 2005

CORK-SURE W GROWERS SECT LEN F RD - Project Lake Littoral Zone's Planting Plan
 NO SCHE 12/5/00 20059 SGT. PA



PLANT LIST	QTY	TBD
IV	IV	QTY TBD
SB	SB	QTY TBD
S	S	QTY TBD
PC	PC	QTY TBD
PC	PC	QTY TBD
S	S	QTY TBD
SB	SB	QTY TBD

RECEIVED
 DEC 07 2000
 PERMIT COUNTER

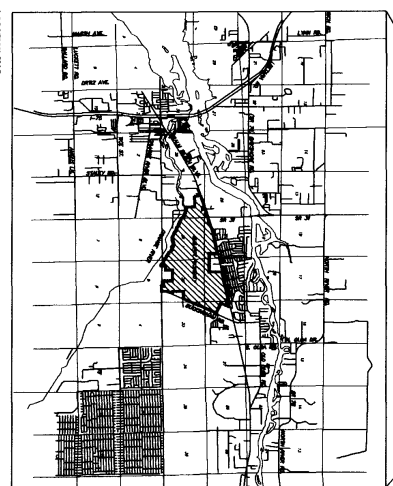
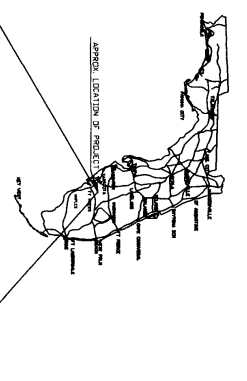
Note: Pursuant to 1.41(i)(h) and LDC 10-413, all project lakes will be designed in a sinuous manner. Pursuant to 1.41(i)(h) and LDC 10-418, all project lake littoral zones will be planted with minimal four types of native wetland herbaceous plants at one plant per linear foot of shoreline. The type, density and location of project open space plantings will be specified through a Project Lake Littoral Zone Plantings Plan. ~~This plan will be submitted for review and approval prior to the project's final Development Order.~~

DGI 2000-00070



STEPHEN J. TRUDNAK, P.A.
 LANDSCAPE ARCHITECTURE AND LAND PLANNING
 3461 Bonita Bay Boulevard • Suite 224
 Bonita Springs, Florida 34134
 (941) 495-6464 • FAX (941) 495-8486

S. Trudnak
 12/6/00



LOCATION MAP

LAND USE AND DEVELOPMENT PROGRAM SUMMARY

Category	Area (Ac)	Use	Notes
Residential	14.2	Single-Family Residential	...
Commercial	1.5	Office/Professional	...
Public	0.5	Community Center	...
Open Space	2.0	Park/Recreation	...

SITE DEVELOPMENT NOTES

- This is a request for a zoning for A-1 to P-1. The land use category is Residential, Single-Family, and the property is currently zoned A-1 to P-1.
- The total residential unit count may not exceed 1000 units. The gross area may not exceed 100,000 square feet. The project may not exceed 100,000 square feet of gross area.
- The total "Neighborhood Concept" area may not exceed a total of 20 acres. The project boundaries may be slightly adjusted from the existing boundaries to accommodate the proposed site plan.
- The project may not exceed a total of 100,000 square feet of gross area. The project may not exceed 100,000 square feet of gross area.
- The project may not exceed a total of 100,000 square feet of gross area. The project may not exceed 100,000 square feet of gross area.

PANORAMA / OPEN SPACE SUMMARY

Area	Area (Ac)	Open Space (Ac)	Notes
Area 1	14.2	2.0	...
Area 2	1.5	0.5	...
Area 3	0.5	0.5	...

SCHEDULE OF DEVIATIONS

- Deviation from DDC Section 14-203.2(a) which requires, upon possible projects in the future, the applicant to provide a site plan showing the location of all proposed structures, including the location of all proposed structures, including the location of all proposed structures.
- Deviation from DDC Section 14-203.2(b) which requires, upon possible projects in the future, the applicant to provide a site plan showing the location of all proposed structures, including the location of all proposed structures, including the location of all proposed structures.
- Deviation from DDC Section 14-203.2(c) which requires, upon possible projects in the future, the applicant to provide a site plan showing the location of all proposed structures, including the location of all proposed structures, including the location of all proposed structures.

SCHEDULE OF USES

- Use 1: Single-Family Residential
- Use 2: Office/Professional
- Use 3: Community Center
- Use 4: Park/Recreation
- Use 5: Retail
- Use 6: Restaurant
- Use 7: Hotel
- Use 8: Entertainment
- Use 9: Religious
- Use 10: Educational

Area	Area (Ac)	Use	Notes
Area 1	14.2	Single-Family Residential	...
Area 2	1.5	Office/Professional	...
Area 3	0.5	Community Center	...

Area	Area (Ac)	Use	Notes
Area 1	14.2	Single-Family Residential	...
Area 2	1.5	Office/Professional	...
Area 3	0.5	Community Center	...

PERMIT COUNTER

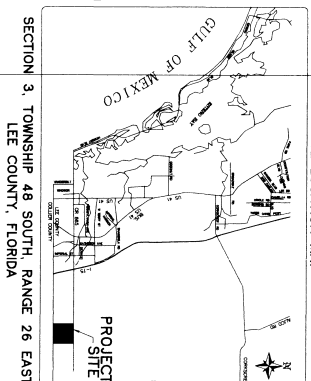
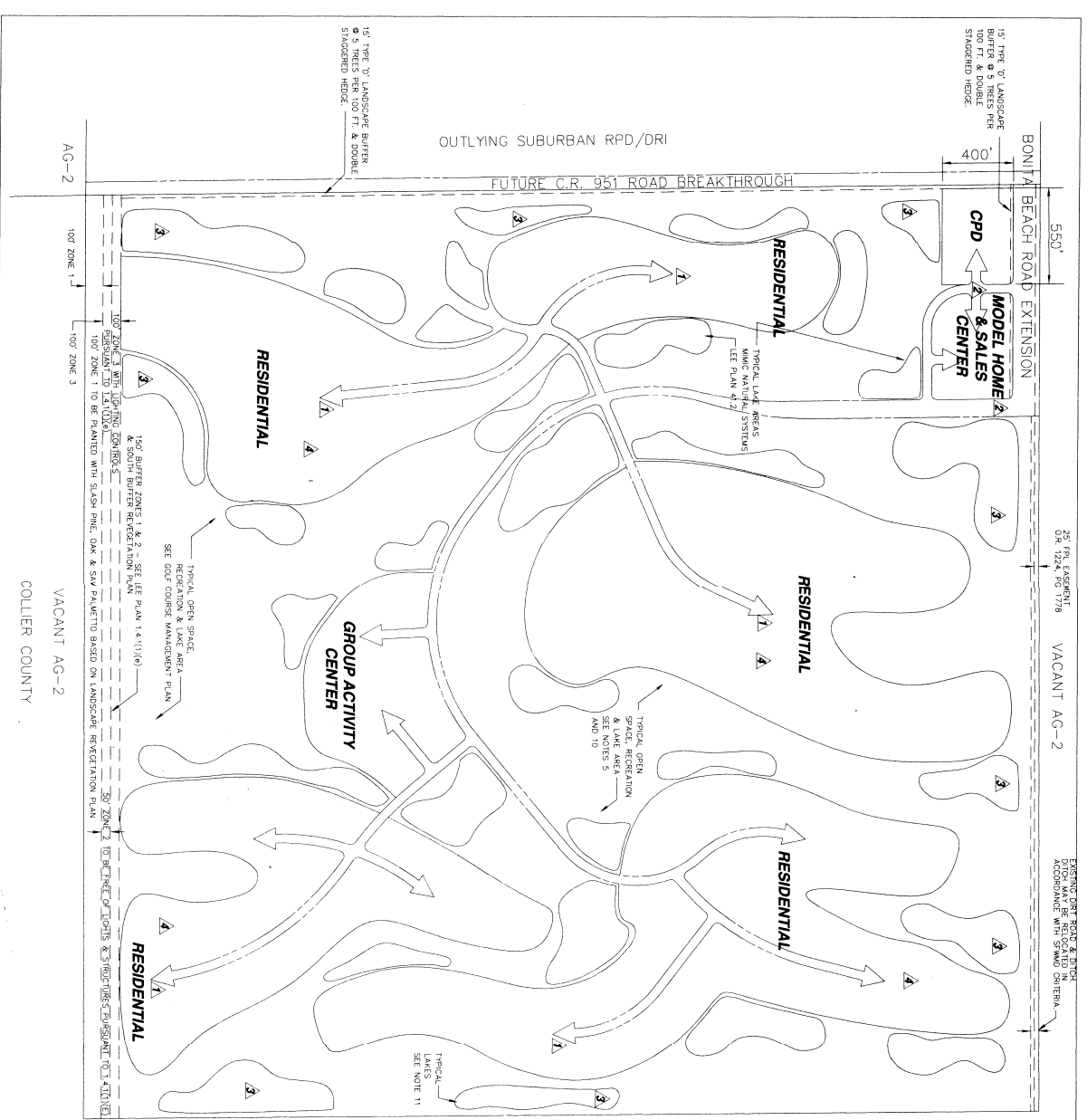
RELEVANT

SR 80 LLC
3451 Bonita Bay Blvd., Suite 202
Bonita Springs, FL 33923-4395

VANASSE & DAYLOR, LLP
12730 New Brittany Blvd., Suite 600
Bonita Springs, FL 33907

BAUCOM MASTER CONCEPT PLAN
EXHIBIT I-F-3, IV-C, IV-E, IV-G, IV-H

DCI 2000-00069



SECTION 3, TOWNSHIP 48 SOUTH, RANGE 26 EAST
LEE COUNTY, FLORIDA

RECEIVED
 DEC 17 2000
 PERMIT COORDINATOR

PROJECT DATA

PROJECT NO.	2000-00070
PROJECT NAME	CORKSCREW GROWERS SECTION 3 R.P.D.
CLIENT	CORKSCREW GROWERS, INC.
DATE	8-16-00

PROFESSIONAL ENGINEER'S PLANNERS & LAND SURVEYORS

Frank & Engineering, Inc.
 1505 S.W. 5th Street, Suite 300, Fort Myers, Florida 33902
 Phone: (813) 938-5400 Fax: (813) 938-7833
 Email: frank@frankandeng.com Website: www.frankandeng.com

PREPARED FOR:
CORKSCREW GROWERS, INC.
 P.O. Box 388
 Fort Myers, FL 33902
 (813) 938-7742

REVISIONS:

NO.	DATE	DESCRIPTION
1	8/16/00	ISSUE FOR PERMIT
2	8/16/00	ISSUE FOR PERMIT
3	8/16/00	ISSUE FOR PERMIT
4	8/16/00	ISSUE FOR PERMIT
5	8/16/00	ISSUE FOR PERMIT
6	8/16/00	ISSUE FOR PERMIT
7	8/16/00	ISSUE FOR PERMIT
8	8/16/00	ISSUE FOR PERMIT
9	8/16/00	ISSUE FOR PERMIT
10	8/16/00	ISSUE FOR PERMIT
11	8/16/00	ISSUE FOR PERMIT
12	8/16/00	ISSUE FOR PERMIT
13	8/16/00	ISSUE FOR PERMIT
14	8/16/00	ISSUE FOR PERMIT
15	8/16/00	ISSUE FOR PERMIT
16	8/16/00	ISSUE FOR PERMIT
17	8/16/00	ISSUE FOR PERMIT
18	8/16/00	ISSUE FOR PERMIT
19	8/16/00	ISSUE FOR PERMIT
20	8/16/00	ISSUE FOR PERMIT
21	8/16/00	ISSUE FOR PERMIT
22	8/16/00	ISSUE FOR PERMIT
23	8/16/00	ISSUE FOR PERMIT
24	8/16/00	ISSUE FOR PERMIT
25	8/16/00	ISSUE FOR PERMIT
26	8/16/00	ISSUE FOR PERMIT
27	8/16/00	ISSUE FOR PERMIT
28	8/16/00	ISSUE FOR PERMIT
29	8/16/00	ISSUE FOR PERMIT
30	8/16/00	ISSUE FOR PERMIT
31	8/16/00	ISSUE FOR PERMIT
32	8/16/00	ISSUE FOR PERMIT
33	8/16/00	ISSUE FOR PERMIT
34	8/16/00	ISSUE FOR PERMIT
35	8/16/00	ISSUE FOR PERMIT
36	8/16/00	ISSUE FOR PERMIT
37	8/16/00	ISSUE FOR PERMIT
38	8/16/00	ISSUE FOR PERMIT
39	8/16/00	ISSUE FOR PERMIT
40	8/16/00	ISSUE FOR PERMIT
41	8/16/00	ISSUE FOR PERMIT
42	8/16/00	ISSUE FOR PERMIT
43	8/16/00	ISSUE FOR PERMIT
44	8/16/00	ISSUE FOR PERMIT
45	8/16/00	ISSUE FOR PERMIT
46	8/16/00	ISSUE FOR PERMIT
47	8/16/00	ISSUE FOR PERMIT
48	8/16/00	ISSUE FOR PERMIT
49	8/16/00	ISSUE FOR PERMIT
50	8/16/00	ISSUE FOR PERMIT
51	8/16/00	ISSUE FOR PERMIT
52	8/16/00	ISSUE FOR PERMIT
53	8/16/00	ISSUE FOR PERMIT
54	8/16/00	ISSUE FOR PERMIT
55	8/16/00	ISSUE FOR PERMIT
56	8/16/00	ISSUE FOR PERMIT
57	8/16/00	ISSUE FOR PERMIT
58	8/16/00	ISSUE FOR PERMIT
59	8/16/00	ISSUE FOR PERMIT
60	8/16/00	ISSUE FOR PERMIT
61	8/16/00	ISSUE FOR PERMIT
62	8/16/00	ISSUE FOR PERMIT
63	8/16/00	ISSUE FOR PERMIT
64	8/16/00	ISSUE FOR PERMIT
65	8/16/00	ISSUE FOR PERMIT
66	8/16/00	ISSUE FOR PERMIT
67	8/16/00	ISSUE FOR PERMIT
68	8/16/00	ISSUE FOR PERMIT
69	8/16/00	ISSUE FOR PERMIT
70	8/16/00	ISSUE FOR PERMIT
71	8/16/00	ISSUE FOR PERMIT
72	8/16/00	ISSUE FOR PERMIT
73	8/16/00	ISSUE FOR PERMIT
74	8/16/00	ISSUE FOR PERMIT
75	8/16/00	ISSUE FOR PERMIT
76	8/16/00	ISSUE FOR PERMIT
77	8/16/00	ISSUE FOR PERMIT
78	8/16/00	ISSUE FOR PERMIT
79	8/16/00	ISSUE FOR PERMIT
80	8/16/00	ISSUE FOR PERMIT
81	8/16/00	ISSUE FOR PERMIT
82	8/16/00	ISSUE FOR PERMIT
83	8/16/00	ISSUE FOR PERMIT
84	8/16/00	ISSUE FOR PERMIT
85	8/16/00	ISSUE FOR PERMIT
86	8/16/00	ISSUE FOR PERMIT
87	8/16/00	ISSUE FOR PERMIT
88	8/16/00	ISSUE FOR PERMIT
89	8/16/00	ISSUE FOR PERMIT
90	8/16/00	ISSUE FOR PERMIT
91	8/16/00	ISSUE FOR PERMIT
92	8/16/00	ISSUE FOR PERMIT
93	8/16/00	ISSUE FOR PERMIT
94	8/16/00	ISSUE FOR PERMIT
95	8/16/00	ISSUE FOR PERMIT
96	8/16/00	ISSUE FOR PERMIT
97	8/16/00	ISSUE FOR PERMIT
98	8/16/00	ISSUE FOR PERMIT
99	8/16/00	ISSUE FOR PERMIT
100	8/16/00	ISSUE FOR PERMIT