



Maps For:

DCI2000-00014

THIS IS NOT A SURVEY

ESTERO BAY

NOTE:
SEE SHEET 1 FOR LEGAL DESCRIPTIONS

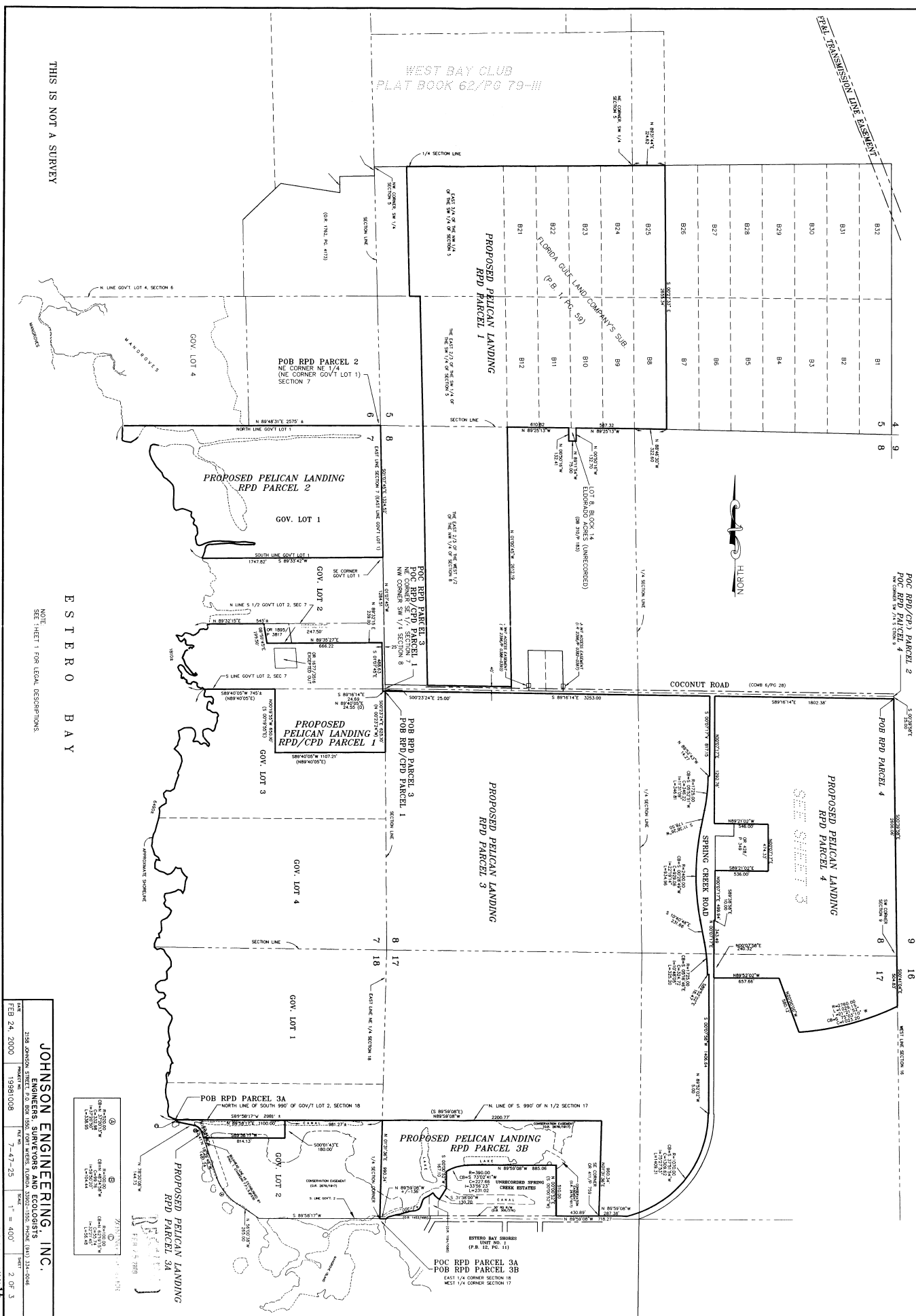
JOHNSON ENGINEERING, INC.
ENGINEERS, SURVEYORS AND ECOLOGISTS

ENGINEERS, SURVEYORS AND ECOLOGISTS
STREET, P.O. BOX 1550, FORT MYERS, FLORIDA 33902-1550. E-

PHONE (941) 334-6044

DATE	PROJECT NO.	P.L. NO.	SCALE	SHEET
FEB 24, 2000	19981008	7-47-25	1" = 400'	2 OF 3

DCI 2000-111014





THIS IS NOT A SURVEY

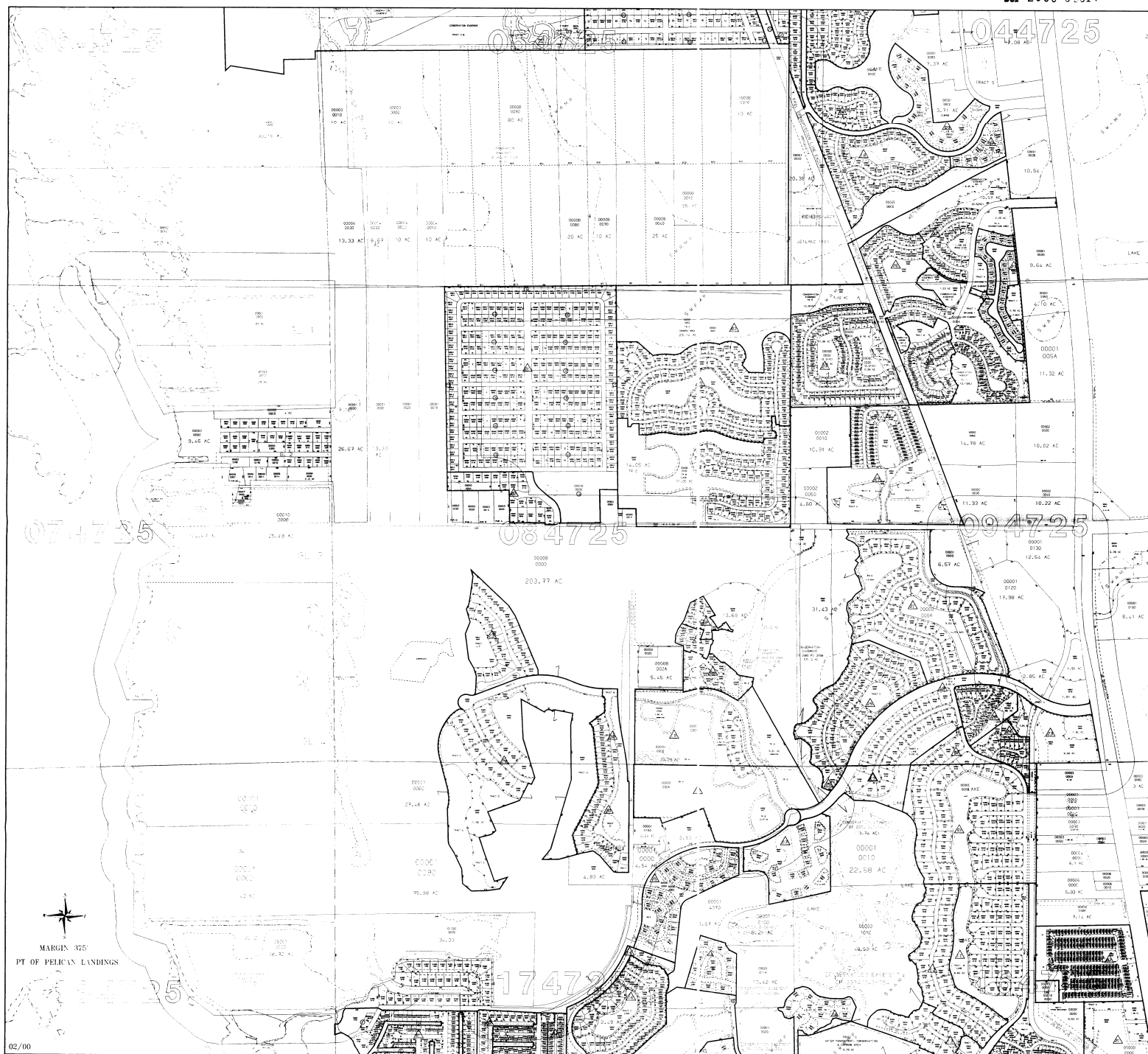
JOHNSON ENGINEERING, INC
ENGINEERS, SURVEYORS AND ECOLOGISTS

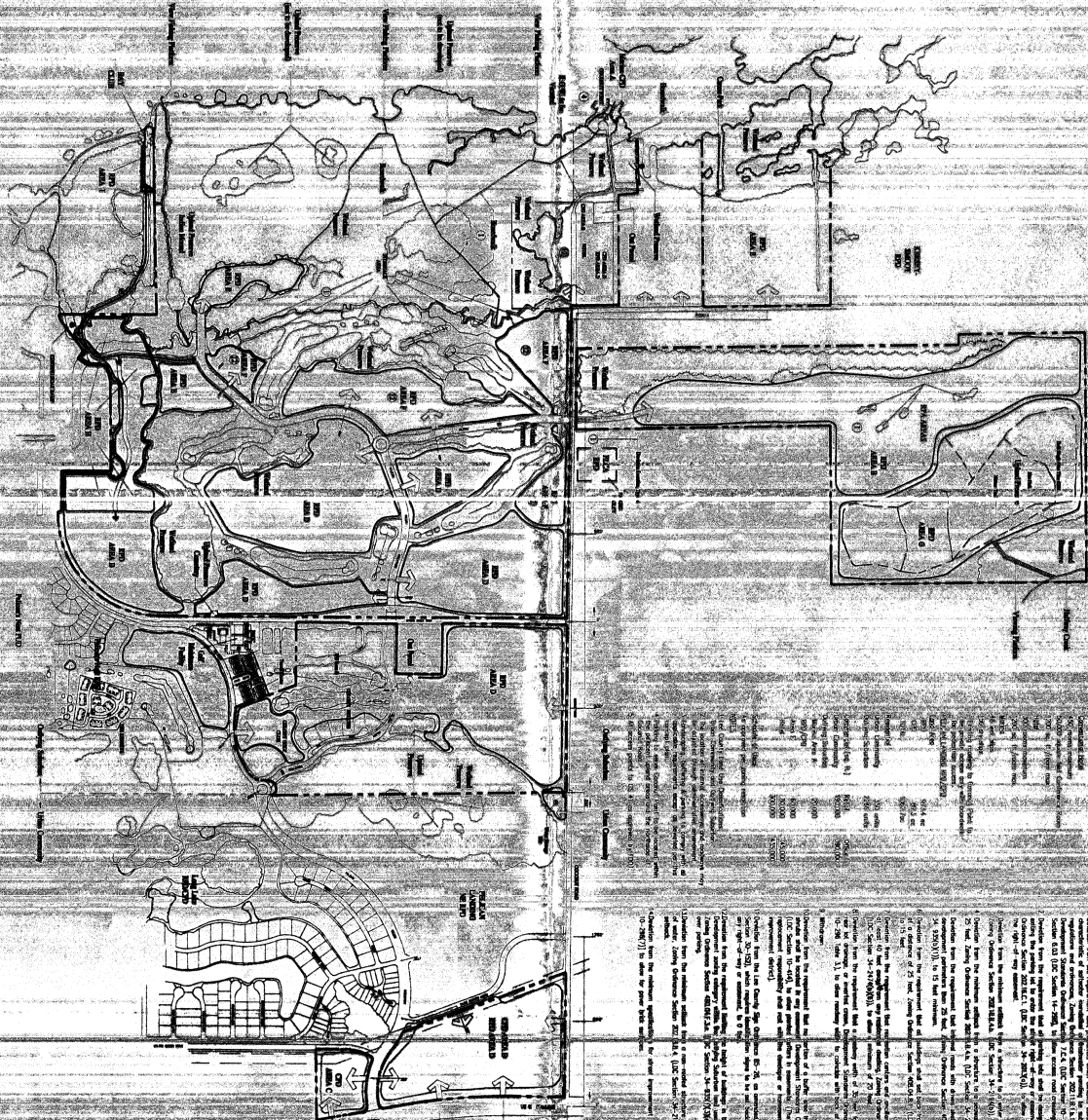
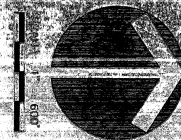
ENGINEERS, SURVEYORS AND ECOLOGISTS

DATE	PROJECT NO.	PAGE NO.	SCALE	SHEET
FEB 24, 2000	19981008	7-47-25	1"=400'	3 OF 3

DEI 2010-0014

DRUG DESCRIPTION





THIS SITE IS LOCATED IN THE
MILITARY BAY AREA OF THE
PACIFIC COAST OF THE
UNITED STATES OF AMERICA
AND IS SUBJECT TO THE
FEDERAL AVIATION
ADMINISTRATIVE
REGULATIONS AND
ORDINANCES.

THE SITE IS LOCATED IN THE
MILITARY BAY AREA OF THE
PACIFIC COAST OF THE
UNITED STATES OF AMERICA
AND IS SUBJECT TO THE
FEDERAL AVIATION
ADMINISTRATIVE
REGULATIONS AND
ORDINANCES.

RECEIVED
FEB 25 2000
FEDERAL AVIATION
ADMINISTRATIVE
REGULATIONS AND
ORDINANCES

ESTERO BAY

MEAN HIGH
WATER LINE

MANGROVE
FRINGE

Transition
Zone

- GOLF COURSE TEES
- GOLF COURSE FAIRWAY
- GOLF COURSE GREENS
- OPEN SPACE
- SURFACE WATER MANAGEMENT LAKES
- WET PHYTO-REGENERATION ZONES
- ROW/PAVEMENT
- CONSERVATION AREA
- DRAINAGE BASIN BOUNDARY
- MANGROVE FRINGE
- Transition Zone

JOHNSON PARCEL
PROPERTY LINE

LAGGERS
ROAD

SOUGH

PHYTO
ZONE

PHYTO
ZONE

Wilsa Miller

Project: Cypress - College - University Landscape Architecture - Landscape Architecture
2000 Hwy 100, Suite 200, Naples, FL 34109
Phone: (239) 441-1234
Fax: (239) 441-1235
Email: info@wilsamiller.com
Website: www.wilsamiller.com