



**ALVA**  
*A Living Vision of Alva*

Alva Inc. is dedicated to preserving the tranquility  
 and beauty of Alva  
 P O. Box 2022, Alva FL 33920 [www.alvafl.org](http://www.alvafl.org)

January 2010

Please Join In....

# Planning for Alva's Future

Starting Monday, January 11 at 7 PM

Alva, Inc. will begin a series of community planning meetings on January 11, 2010, at 7PM at the Alva Community Center. Gerald E Murphy, community planner, will lead a discussion of comprehensive planning, how it relates to Alva, and how the Lee Comprehensive Plan is changed. Residents of Alva and the surrounding area are encouraged to attend and participate in deciding how Alva will grow and develop. **Future planning sessions will be held the second Monday of every month at the Alva Community Center at 7PM.** The project is sponsored by Alva, Inc. and the Lee County Board of County Commissioners.

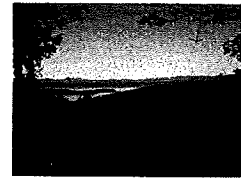
## Holiday Raffle Tickets - Last Chance! \$5 each, 10 for \$40.

**Grand Prize:** Getaway for four to a beautiful North Carolina Mountain Home

**Runner Up's:**

- Alva Village Market \$50 gift certificate
- Alva Country Diner \$50 gift certificate
- A J Auto (next to Village Mkt.): 4 Oil Changes, \$80 value
- Riverdale Learning Academy: 1 week daycare, \$130 value
- Roby Andrys Architect Inc: Connelly "Revolution" slalom ski, \$150 value
- 1886 Siler Dollar: \$40.00 Value

Available at:  
 Alva Diner  
 Alva Village Market  
 A J Auto  
 Riverdale Learning Academy  
 Call Rob Andrys: 728-2807  
 Drawing at the January Meeting



Did you Know.....? Members and non-members alike are welcome at all Alva Inc. Meetings.—Please Come!

## Community Calendar

- January 11 (Monday) Alva Inc. planning/membership meeting, 7PM, Alva Community Center.
- January 19 (Tuesday) ELCC Meeting, 6:30 PM, Olga Community Center.
- February 8 (Monday) Alva Inc. planning/membership meeting, 7PM, Alva Community Center.

**Next Meeting: Monday January 11, 7 PM, Alva Community Center**



**ALVA**  
*A Living Vision of Alva*

Alva Inc. is dedicated to preserving the tranquility  
 and beauty of Alva  
 P O. Box 2022, Alva FL 33920 [www.alvafl.org](http://www.alvafl.org)

**February 2010**

Presentation on the

# NORTH OLGA PLAN

**Monday, February 8 at 7 PM**

A small number of individuals owning land parcels in the northwest corner of the Alva Community Planning Area have assembled - with funding from the BOCC - a proposed comprehensive plan amendment encouraging increased residential density and commercial development in the area. The proposal can be viewed at : <http://www.leegov.com/dcd/PlanAmendments/PA2009-2010/RA2009-2010.htm>  
**The Conservancy of Southwest Florida** will present their analysis and view of the plan at our February meeting. Please join us!

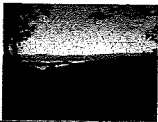
## Alva Community Planning Kicked Off!

One had to hunt for a chair at the January 11 Community Planning Kickoff Meeting! A full room listened to the background of Alva planning by Rob Andrys, followed Dr. Jerry Murphy's presentation on proceeding forward. This month will see discussion of the related issue of the "North Olga" plan (see above) and how or if it may impact Alva's efforts, as there is overlap in the areas of interest. The next steps will be planning area-wide standards, and more detailed planning for the core area. Don't miss the chance to help shape the future of Alva!

### Raffle Nets \$1,800 for Alva

### Thank you donors!

#### Winners:



Vacation in NC: Lane Temple  
 Daycare for a week: Dianne Johansson  
 Water Ski: Albert Gambros  
 Silver Dollar: Rick Clay

Alva Market feast: Barb Watts  
 Alva Diner feast: J.D. Shouse  
 Oil Changes: Alex

Did you Know....? Members and non-members alike are welcome at all Alva Inc. Meetings.—Please Come!

## Community Calendar

**February 8** (Monday) Alva Inc. planning/membership meeting, 7PM, Alva Community Center. North Olga Plan presentation.  
**February 16** (Tuesday) ELCC Meeting, 6:30 PM, Olga Community Center. Commissioner Bigelow: Single Member Districts.  
**March 8** (Monday) Alva Inc. planning/membership meeting, 7PM, Alva Community Center.

**Next Meeting: Monday February 8, 7 PM, Alva Community Center**



**ALVA**  
*A Living Vision of Alva*

Alva Inc. is dedicated to preserving the tranquility  
 and beauty of Alva  
 P O. Box 2022, Alva FL 33920 [www.alvafl.org](http://www.alvafl.org)

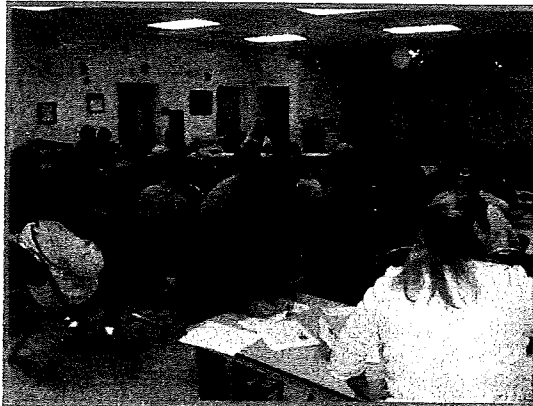
**March 2010**

Participation Strong in

# Alva Community Planning

**Next Meeting Monday, March 8 at 7 PM**

Another filling-of-the-room occurred in February when Dr. Jerry Murphy spoke on the Vision to be developed by community members for the Alva Community Planning Area. He provided handout information of prior work on the subject, sending members home with food-for-thinking in preparation for next month's community plan meeting. Issues and concerns regarding The North Olga Plan (density, commercial node, preservation of rural character) were presented by Julianne Thomas, Conservancy of Southwest Florida. Alva members from North Olga expressed their concern regarding lack of community input and consensus. President Daniels offered to arrange a meeting of community leaders (North Olga, Alva, and Bayshore) to work towards a plan submission that could have broad community support and consensus. Ms. Crespo, North Olga Planner, welcomed President Daniel's offer.  
***Please join your neighbors March 8th to assist in the planning process!***



**Community Members  
 Working Together  
 to  
 Plan Our Future  
 Don't Be Left Out!**

Did you Know.....? Members and non-members alike are welcome at all Alva Inc. Meetings.— Please Come!

## Community Calendar

**March 8** (Monday) Alva Inc. planning/membership meeting, 7PM, Alva Community Center. Vision Statement  
**March 16** (Tuesday) ELCC Meeting, 6:30 PM, Olga Community Center.  
**April 12** (Monday) Alva Inc. planning/membership meeting, 7PM, Alva Community Center.

**Next Meeting: Monday March 8, 7 PM, Alva Community Center**



**ALVA**  
A Living Vision of Alva

Alva Inc. is dedicated to preserving the tranquility and beauty of Alva  
P O. Box 2022, Alva FL 33920 [www.alvafi.org](http://www.alvafi.org)

April 2010

Another Full Parking Lot!  
**Alva Community Planning**

Next Meeting Monday, April  
12 at 7 PM

Dr. Jerry Murphy spoke on *How to Develop in a Rural Area* (slides provided by Julianne Thomas of the Conservancy). Discussion and input then followed regarding community desires with Jerry as moderator and Rob furiously writing on large sheets of paper. Comments included:

- Rural Mixed Use defined for Alva: Horses and cows!
- Width of country roads: Widening detracts from rural nature.
- SR 31: Plan to widen? Opposition?
- Clustering is encouraged within current Land Use densities.
- TDR's can provide a positive impact - properly enacted.
- Designation of North River Road as a Scenic/ Historic Highway will add protection.
- Encourage dedication of conservation easements with the resulting property tax benefit.
- Suggest Tax Increment Financing of sidewalks.
- Voice strong opposition to Babcock's intent to widen North River Road.
- Where commercial is allowed or encouraged, require interconnection of properties (drive between them without going back out on the highway).

**April Meeting:** A "shopping list" of objectives (broad topics) that have been adopted by other Lee planning communities, including the previously-submitted Alva Standards of Development is in preparation by Jerry and Rob. These will be presented at the April 12 planning meeting for community input and discussion.

*Don't Be Left Out!*



**North Olga Plan  
Heading to LPA**

A revised North Olga plan has been submitted to Lee Staff by the six-member North Olga Planning Panel. It is available for download at:

<http://www.mediafire.com/?okwmmzvodq>.

The plan may be a subject of the April **Local Planning Agency Meeting**, scheduled for **April 26<sup>th</sup>, 8:30 AM, BOCC Chambers**. The proposed plan includes the following communities in the northwest area of Alva, west of the Regional Park:

- North River Oaks
- Duke Highway/Terrell Drive
- Otterwater Way/Elmwood Drive
- North River Estates
- Telegraph Creek
- Riverwind Cove
- Interlochen Dr./Traverse Lane/Franklin Locks Area
- Serengeti
- Taylor Road area
- Lyndhurst Lane area
- Fichters Creek area

If you have an opinion you are encouraged to voice it at the April 12 Alva Inc meeting and the April 26<sup>th</sup> LPA Meeting.

*Don't Be Left Out!*



**Fight Cancer!  
Join Relay for Life**

The annual East Lee County Relay for Life will be held Friday April 30th at Riverdale High School. The event begins at 6:00pm with the celebration for our cancer survivors and runs through the night, ending at noon on Saturday May 1st. There will be lots of activities and fund raising for the American Cancer Society. For information to become involved, please go to [www.relayforlife.org/eastleecountyfl](http://www.relayforlife.org/eastleecountyfl) Look for Alva-Team Hope and consider joining. Don't worry—by joining the team you are not required to stay all night. If you would like to make a donation you can do so on the same web-site - look for Denise Houck. It is a great event and we would love to see you there.

*Did you Know....?*

- Members and non-members alike are welcome at all Alva Inc. Meetings. - Please Come!
- Mark you calendar: July 12, 6:30 PM, Alva School, **Alva Political Candidates Forum!**
- Lee County has awarded a planning contract to assist in the evaluation and analysis of the Lee Plan. We are pleased the Alva Planner, Dr. Jerry Murphy, is on the selected team.
- Babcock Ranch and FDOT signed an agreement February 18 2010 to **four-lane SR 31**. The construction must start by December 31 2015. Don't be left out!

**Community Calendar**

- April 12** (Monday) Alva Inc. planning/membership meeting, 7 PM, Alva Community Center. Vision Statement
- April 26** (Monday) Local Planning Agency, 8:30 AM, BOCC Chambers, possible North Olga Hearing.
- April 27** (Tuesday) ELCC Meeting, 6:30 PM, Olga Community Center.
- April 30** (Friday) Relay for Life, 6:00 PM, Riverdale High School
- May 10** (Monday) Alva Inc. planning/membership meeting, 7PM, Alva Community Center.

**Next Meeting: Monday April 12, 7 PM, Alva Community Center**



**ALVA**  
A Living Vision of Alva

Alva Inc. is dedicated to preserving the tranquility and beauty of Alva

P O. Box 2022, Alva FL 33920 [www.alvafi.org](http://www.alvafi.org)

**MAY 2010**

## Alva Community Planning

### Objectives Drafted

Next Meeting Monday, May 10 at 7 PM

The group reviewed objectives that had been developed and enacted through other community planning initiatives. After healthy interaction, consensus was reached on objectives in the following areas:

- Growth Management
- Rural Character
- Natural Resources
- Water Quality, Quantity and Surface Water Resources
- Road Improvements
- Water-Dependent Overlay Zone
- Land Use
- Historic Resources
- Agricultural Uses
- Mixed-Use Development
- Community Facilities and Services
- Residential Uses
- Commercial Uses
- Development Regulations
- Intergovernmental Coordination
- Public Participation

See specific wording in the April meeting minutes at [www.alvafi.org](http://www.alvafi.org). May Meeting: Enabling Policies for Objectives.

**Don't Be Left Out!**

## North Olga Plan LPA Hearing Delayed to May

### Community Consensus Questioned

LPA Hearing of the North Olga Plan has been delayed to May at applicants' request after receiving a draft staff report that questioned if there is community consensus to support the plan. As submitted, the plan includes the following communities:

- North River Oaks
- Duke Highway/Terrell Drive
- Otterwater Way/Elmwood Drive
- North River Estates
- Telegraph Creek
- Riverwind Cove
- Interlochen Dr./Traverse Lane/Franklin Locks Area
- Serengeti
- Taylor Road area
- Lyndhurst Lane area
- Fichters Creek area

If you have an opinion you are encouraged to voice it at the May 10 Alva Inc meeting and the May 24<sup>th</sup> LPA Meeting.

**Don't Be Left Out!**

## Kathie Ebaugh: New Community Planner Welcome!

Alva Inc. President Ruby Daniels and planners recently provided an *Alva Welcome* to Ms. Ebaugh in her new Lee County position and discussed Alva planning. Ms. Ebaugh can be reached at 239-533-8313.



### Conservancy:

#### A Special Thank You

Ms. Julianne Thomas of the Conservancy of Southwest Florida has been providing invaluable assistance and support to Alva as we wrestle with planning issues. She has also been assisting our neighbors in West Hendry County. Our thanks to both Julianne and the Conservancy.

## Call for Photos!

Please send your favorite Alva photos to [info@alvafi.org](mailto:info@alvafi.org) or bring to the meeting. We plan to give our website a facelift!



## Did you Know....?

- Members and non-members alike are welcome at all Alva Inc. Meetings. - Please Come!
- Mark your calendar: July 12, 6:30 PM, Alva School, Alva Political Candidates Forum!

# Community Calendar

- May 10 (Monday) Alva Inc. planning/membership meeting, 7 PM, Alva Community Center. Topic: Enabling Policies
- May 24 (Monday) Local Planning Agency, 8:30 AM, BOCC Chambers, North Olga Hearing.
- May 25 (Tuesday) ELCC Meeting, 6:30 PM, Olga Community Center.
- June 14 (Monday) Alva Inc. planning/membership meeting, 7 PM, Alva Community Center.
- July 12 (Monday) Alva Political Candidates Forum, 6:30 PM, Alva School

**Next Meeting: Monday May 10, 7 PM, Alva Community Center**



# ALVA

*A Living Vision of Alva*

Alva Inc. is dedicated to preserving the tranquility and beauty of Alva  
P O. Box 2022, Alva FL 33920  
[www.alvafl.org](http://www.alvafl.org)  
**June 2010 Newsletter**

## Alva Community Planning

**Next Meeting: June 14, 7PM**  
**Meeting with Business Interests:**  
**June 21, 3PM, Alva Diner**

Implementing policies for: Growth Management, Rural Character, Natural Resources, Water Quality, Quantity and Surface Water Resources, Road Improvements, Water-Dependent Overlay Zone, Land Use, Historic Resources, Agricultural Uses, Mixed-Use Development, Community Facilities and Services, Residential Uses, Commercial Uses, Development Regulations, Intergovernmental Coordination, Public Participation.

Don't Be Left Out!

## Lee Staff Recommends Against North Olga Plan

### Lack of Community Consensus Cited

The LPA continued the hearing until June 7. Over ninety North Olga residents have signed petitions against the plan. An update will be provided at the June 14 Alva Inc. meeting. **The BOCC will consider the North Olga Plan at their June 16 Hearing, 8:30AM, BOCC chambers.** Communities included in the proposed plan: North River Oaks, Duke Highway/Terrell Drive, Otterwater Way/Elmwood Drive, North River Estates, Telegraph Creek, Riverwind Cove, Interlochen Dr./Traverse Lane/Franklin Locks Area, Serengeti, Taylor Road area, Lyndhurst Lane area, Fichters Creek area

Don't Be Left Out!

## Alva Political Candidates Forum

**July 12, 6:30PM**  
**Alva School**

Send your challenging candidate questions to Ruby at [rubydaniels@embarqmail.com](mailto:rubydaniels@embarqmail.com)



## Congratulations to Riverdale Learning Academy 2010 VPK Graduates!

Listed alphabetically: Enk Buckelew, Christopher Camarero, Isaiah Cruz, Jaidah Estep, Harrison Hall, Faith Jarczyk, Waylon Matejkovic, Jennifer Mayes, Yasley Miranda, Noah Musseiwite, Sky Nelson, Trevor Pelquin, Xavier White, Pedro Zavala-Tores.

## Alva Museum and Library Rezoning

The proposal is to rezone the Alva Library & Museum from Residential to Community Facilities to be in keeping with its use and support restoration efforts. The tentative hearing date is July 14, 2010 10AM, 2<sup>nd</sup> floor of our office on 1500 Monroe Street, Fort Myers. Public Works/Community Development building. Contact: Tony Palermo and Shawn lamely, 533-8325.

## Welcome Emma!

Please join us in a warm Alva welcome to intern Emma Racila, completing her MBA at FGCU and assisting Alva Inc. with community planning. You may see her at the meetings and on the volleyball court!

Members and non-members alike are always welcome at Alva Inc.

Meetings -

**Please Come!**

See ya there!



**BARGAIN BIN**  
**THRIFT STORE**

# Auction!



Tools, toys, furniture, household, jewelry.  
Food, raffles, discount haircuts at Gail's  
**Saturday June 19, 9AM preview, 10AM auction**  
14801 Palm Beach Boulevard - Call 693-0847



# Community Calendar

- June 14 (Monday)** Alva Inc. planning/membership meeting, 7PM, Alva Community Center. Topic: Planning
- June 16 (Wednesday)** BOCC Meeting on North Olga Plan, 9:30AM, BOCC Chambers.
- June 19 (Saturday)** Bargain Bin Auction and Gail's discount haircuts, starts 9AM, 14801 Palm Beach Boulevard
- June 21 (Monday)** Alva business interests and community planning, 3PM Alva Diner
- June 22 (Tuesday)** ELCC Meeting, 6:30PM, Olga Community Center. Speaker is Ken Wilkinson, Lee Property Appraiser
- July 12 (Monday)** Alva Political Candidates Forum, 6:30PM, Alva School
- July 14 (Wednesday)** Alva Museum & Library Rezoning Hearing, 10AM, 1500 Monroe Street, 2nd Floor

**Next Meeting: Monday June 14, 7PM, Alva Community Center**



# ALVA

*A Living Vision of Alva*

Alva Inc. is dedicated to preserving the tranquility and beauty of Alva  
P O. Box 2022, Alva FL 33920  
[www.alvafl.org](http://www.alvafl.org)  
July 2010 Newsletter

## Alva Political Candidates Forum

**Monday July 12, 6:30PM Alva School**  
Send your challenging candidate questions to Ruby at [rubydaniels@embarqmail.com](mailto:rubydaniels@embarqmail.com)

### Alva Community Planning WORKSHOP

**Saturday July 24 9AM**  
**Alva Community Center**

The plan is in draft and proceeding at a good pace. It was presented and comments received at the membership meeting on June 14th. A special presentation was provided for business interests on June 21st. If you receive this newsletter via email, the draft plan is attached. The Saturday workshop (above) is the next opportunity for you to participate and provide comment.

Implementing policies have been drafted for: Growth Management, Rural Character, Natural Resources, Water Quality, Quantity and Surface Water Resources, Road Improvements, Water-Dependent Overlay Zone, Land Use, Historic Resources, Agricultural Uses, Mixed-Use Development, Community Facilities and Services, Residential Uses, Commercial Uses, Development Regulations, Intergovernmental Coordination, Public Participation.

**DON'T BE LEFT OUT!**

### North Olga Plan Withdrawn

The plan was withdrawn by the North Olga Planning Panel just prior to hearing by the BOCC. Commissioner Mann spoke at some length regarding his fervent hope the plan proponents would work with Alva Inc. to arrive at a consensus plan for the entire Alva area.

Communities included in the proposed North Olga Plan: North River Oaks, Duke Highway/Terrell Drive, Otterwater Way/ Elmwood Drive, North River Estates, Telegraph Creek, Riverwind Cove, Interlochen Dr./Traverse Lane/Franklin Locks Area, Serengeti, Taylor Road area, Lyndhurst Lane area, and Fichters Creek area.

Residents of the subject area have requested the Alva Community Plan currently under development (see workshop under Community Calendar below) speak to the entire Alva Community Planning Area. North Olga Planning Panel representatives have requested to speak at the July 27 ELCC meeting (see Community Calendar below).

**Members and non-members alike are welcome at all Alva Inc. Meetings -**

**Please Come!**



## Community Calendar

- July 12 (Monday)** Alva Political Candidates Forum, 6:30PM, Alva School
- July 14 (Wednesday)** Alva Museum & Library Rezoning Hearing, 10AM, 1500 Monroe Street, 2nd Floor
- July 24 (Saturday)** Alva Inc. Community Planning Workshop, 9AM, Alva Community Center.
- July 27 (Tuesday)** ELCC, 6:30PM, Olga Community Center. Speaker: North Olga Planning Panel. Live music follow!
- August 9 (Monday)** Alva Inc. Membership Meeting, 7PM, Alva Community Center.

**Next Regular Meeting: Monday August 9, 7PM, Alva Community Center**



# ALVA

*A Living Vision of Alva*

Alva Inc. is dedicated to preserving the tranquility and beauty of Alva  
P O. Box 2022, Alva FL 33920  
[www.alvafl.org](http://www.alvafl.org)  
August 2010 Newsletter

170 ATTEND

## Candidates Forum



It was a full crowd - the traditional Alva Inc. Political Candidates Forum July 12th at the Alva School. Over thirty candidates came to meet locals and describe their aspirations and attributes. A warm Alva Welcome was conveyed by President Ruby Daniels. Moderator Bill Redfern introduced candidates for senator, county commissioner, school and hospital boards, judge and fire district. All were given a brief moment to speak, with time carefully monitored by Andy "the Hook" Erickson. Written questions were submitted to candidates (see below), and a limited number were asked and answered at the Forum. Campaign literature was in abundance, and Lee Elections Supervisor offered voter registration. Unable to attend? Questions to candidates and written responses received are viewable at [www.alvafl.org](http://www.alvafl.org).



**Primary: August 24**  
**General Election: November 2**

### Senator Questions

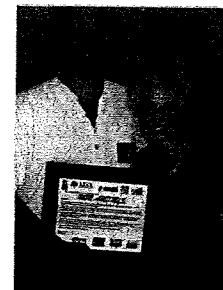
1. The proposed Babcock city will change rural east Lee County forever. What is your plan to minimize or eliminate this planned impact?
2. Mr. Sid Kitson, operating as Citizens for Clean Energy, has proposed legislation that would charge existing FPL customers for construction of a 75 - megawatt solar plant for Babcock city. How would you vote?
3. Please discuss your approach to preserving our rural lands and preventing urban sprawl.

### Commissioner Questions

1. The proposed Babcock city will change rural east Lee County forever. What is your plan to minimize or eliminate this planned impact?
2. Please identify your three top sources of spending reduction to match the county budget to available funding.
3. How will you vote on any property tax rate increase?
4. How will you vote on any proposal to divide the Alva Community Planning Area?
5. Please identify your platform to spur economic recovery in Lee County.

### Alva Bids Rob and Sandy Andrys a Fond Farewell.

Rob was an Alva Inc. Founder and past President. We wish you both the best in your new ventures.



Rob and Ruby Daniels

Members and non-members alike are welcome at all Alva Inc. Meetings - Please Come!

## Community Calendar

- August 9 (Monday) Alva Inc. Membership Meeting, 7PM, Alva Community Center.
- August 24 (Tuesday) ELCC, 6:30PM, Olga Community Center. Speaker: North Olga Planning Panel. Live music follow!
- September 13 (Monday) Alva Inc. Membership Meeting, 7PM, Alva Community Center.

**Next Regular Meeting: Monday August 9, 7PM, Alva Community Center**





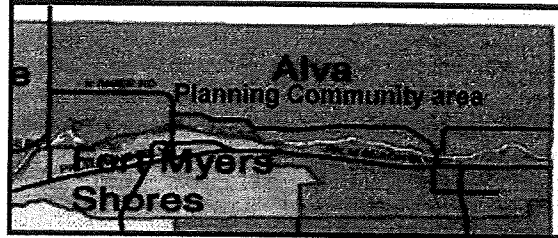
# ALVA

*A Living Vision of Alva*

Alva Inc. is dedicated to preserving the tranquility and beauty of Alva  
P O. Box 2022, Alva FL 33920  
[www.alvafll.org](http://www.alvafll.org)  
September 2010 Newsletter

## Lee Staff Invites North Olga Planning Panel and Alva Inc. to Plan Together

Under the auspices of Ms. Mary Gibbs, Lee Director of Community Development, Planners Matt Noble and Kathie Ebaugh spoke at the August meeting. The Lee Staff proposal is for the two entities to work together with the goal of a single community plan for the entire planning area. Identification of planning objectives and policies that receive mutual agreement was proposed as an early-on step, with any controversial issues considered later. The possibility of sub-areas of Alva and North Olga was also proposed within the overall plan. The proposal received a thank you and willingness to proceed from those in attendance. The staff said they would work with the professional planners, Dr. Jerry Murphy (Alva Inc.) and Ms. Alexis Crespo (North Olga Planning Panel) to evolve a plan for initiating the dialogue.

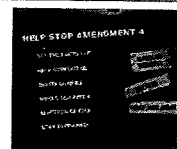


## North Olga Plan to be Distributed

In consonance with Lee Staff's request to work toward a single community plan, Alva Planner Dr. Jerry Murphy will present copies of the submitted North Olga Plan for those interested at the September 13 Meeting. Additional copies of the draft Alva Inc. plan handed out before will also be available. Please note: The submitted North Olga Plan is attached to this newsletter for those who receive an email copy or view the newsletter at [www.alvafll.org](http://www.alvafll.org). The draft Alva plan is attached to the July 2010 Newsletter sent via email and available at [www.alvafll.org](http://www.alvafll.org).



## Proposed Amendment Four Hometown Democracy



What Is It- What Does It Mean?  
Come to the October Meeting (Monday October 11, 7PM) and find out. Speakers will present both sides of the issue.

## Alva Inc. Submits SR 80 Landscape Recommendations

Use only native plant material. Put plants that require moist soils in the areas that are naturally moist. Select drought and cold tolerant plants for the area east of Bedman Creek. Expand the types of plant materials selected to create variety and visual interest.

In the 45 mph zone (Herzog to Joel) replace Hong Kong Orchid, and Wild Date Palm with Live Oaks. Replace Dwarf Oleander with either Coontie, Wild Coffee or Dwarf Firebush. Plant Red Maple and other plants that thrive in wet areas.

Implement a Wildflower Mowing Program from Broadway to Hickey Creek. No Bald Cypress or Paurotis Palm east of Bedman, replace with red cedar. Silver buttonwoods are prone to sooty mold this far inland. Unless the maintenance program includes spraying, substitute green buttonwoods. No landscaping in front of Calusa Preserve. Let the preserved strip of scrub be the landscape feature.

For the Gateway Monument Sign, use Sabal Palm, Saw Palmetto, Coco Plum, Beauty Berry, Coral Bean, and Muhly Grass.

Eventually, we would like to see the Wayside Park turned into a more inviting place for residents and visitors. For this project a group of 3 to 5 low shrubs (String Lily) planted in the depressed area close to Packinghouse would improve the appearance.

**Our Thanks to the Alva Participants and DOT!**

**Members and non-members alike are welcome at all Alva Inc. Meetings - Please Come!**

## Community Calendar

**September 13 (Monday)** Alva Inc. Membership Meeting, 7PM, Alva Community Center. North Olga & Alva Plans

**September 21 (Tuesday)** ELCC, 6:30PM, Olga Community Center.

**October 11 (Monday)** Alva Inc. Membership Meeting, 7PM, Alva Community Center. Hometown Democracy Pros & Cons

**Next Regular Meeting: Monday September 13 7PM, Alva Community Center**



# ALVA

*A Living Vision of Alva*

Alva Inc. is dedicated to preserving the tranquility and beauty of Alva  
P O. Box 2022, Alva FL 33920  
[www.alvafl.org](http://www.alvafl.org)

October 2010 Newsletter

## North Olga Planning Panel Goes it Alone

Shortly after Lee Staff reached out to the North Olga Planning Panel and Alva Inc., proposing the two entities work together with the goal of a single community plan for the entire planning area, the North Olga Planning Panel unilaterally resubmitted their proposed plan to the county. It was submitted as a private initiative, the same way the North River Village Plan was submitted by Bonita Bay.

As a result the BOCC voted to delete North Olga from county-sponsored planning initiatives. The Alva Community Plan will continue to proceed as a county-sponsored amendment. Confused? Come to the October monthly meeting and find out more.



**FIGHT CANCER- RELAY FOR LIFE**  
You're invited to the 2011 East Lee County Relay for Life Kickoff Party Thursday October 21st, 6:00 pm at the River Hall Town House. It is a great opportunity to learn about The American Cancer Society's biggest fundraising event and how you can join the fight against cancer. Call Denise Houck at 693-0317 for additional information.

**Hawkins Joins Board of Directors**  
Long-time Alva resident John Hawkins was elected to the Alva Inc. Board of Directors at the September general meeting. John and his wife Lynn live on Taylor Road west of the Regional Park. Welcome, John and thank you for your community support.

**Vote Yes!**  
FLORIDA HOMETOWN DEMOCRACY

**HELP STOP AMENDMENT 4**  
GET THE FACTS OUT  
HELP SUPPORT US  
INVITE OTHERS  
WHY'S AGAINST 4  
ELECTION CENTER  
STAY INFORMED

Proposed Amendment Four  
Hometown Democracy  
What Is It- What Does It Mean?  
Come to the October Meeting (Monday October 11, 7PM) and find out.

### Hear BOCC Candidates at October ELCC Meeting - It's Your Decision!



Carla Johnston or John Manning

Brian Bigelow or Debbie Jordan

Tammy Hall or Debbie Jackow

Tuesday October 19th 6:30 PM Olga Community Center

Members and non-members alike are welcome at all Alva Inc. Meetings - Please Come!

## Community Calendar

- October 11 (Monday) Alva Inc. Membership Meeting, 7PM, Alva Community Center. Amendment Four (Hometown Democracy) Discussion
- October 19 (Tuesday) ELCC, 6:30PM, Olga Community Center. BOCC Candidates
- November 8 (Monday) Alva Inc. Membership Meeting, 7PM, Alva Community Center.

Next Regular Meeting: Monday October 11 7PM, Alva Community Center



# ALVA

*A Living Vision of Alva*

Alva Inc. is dedicated to preserving the tranquility and beauty of Alva  
P O. Box 2022, Alva FL 33920

[www.alvafl.org](http://www.alvafl.org)

November 2010 Newsletter

## Alva Inc. Incorporates North Olga Plan Words

Lee County Staff requested that Alva Inc. work toward one community plan for the entire Alva Community Planning Area, incorporating the desires of the North Olga Planning Panel. Alva Inc. members and planners have reviewed and incorporated policies and objectives from the proposed North Olga Plan in to the current draft of Alva Community Plan, dated October 28 2010. A copy of the current draft is attached to emailed November Newsletters and also available at [www.alvafl.org](http://www.alvafl.org). Approval for forwarding the plan to Lee Staff will be sought at the November membership meeting.

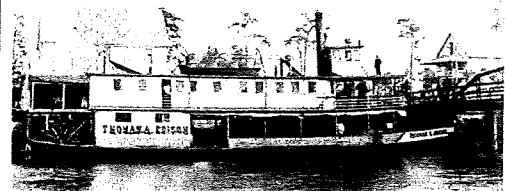


### Alva History - from [www.alvafl.org](http://www.alvafl.org)

The modern history of Alva began with the vision of a Danish sea captain by the name of Peter Nelson. A colorful character that homesteaded a vast area, platted and laid out a village, earmarking plots for schools, parks, churches, even the first library in South Florida. He called his town "Alva," naming it after the profusion of small white flowers growing along the bank of the same name. Captain Nelson was instrumental in the forming of Lee County, and served as one of its first County Commissioners.

The Caloosahatchee River, then, as now, defines this area. It provides transportation, food, recreation, and essential source of water for an area that is just as prone to droughts as it is to floods.

The first bridge to cross the Caloosahatchee was built at Alva in 1903. Two hotels and dining rooms existed at that time, the Three Oaks and the Wade Inn, further attesting to bustling nature of early Alva.



Paddle Wheeler Thomas A. Edison at Alva

**Palm Beach Boulevard Update**  
Working with LDOT and Lee Parks and Recreation, a plan is evolving for both road beautification and improvement of the Alva Wayside Park. Exciting details will be presented at the November membership meeting.

## December Meeting

### A Festive Time!

Plan ahead for the December meeting, 7PM Monday December 13th. Please come, join the festivities and bring a dish!

## Seasons Greetings

Members and non-members alike are welcome at all Alva Inc. Meetings - Please Come!

## Community Calendar

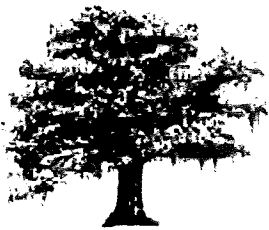
**November 8** (Monday) Alva Inc. Membership Meeting, 7PM, Alva Community Center.

**November 16** (Tuesday) ELCC, 6:30PM, Olga Community Center.

**November 23** (Tuesday) Alva Inc. BOD Meeting, 7PM, Mother of God House of Prayer..

**December 13** (Monday) Alva Inc. Membership Meeting, 7PM, Alva Community Center. Holiday Cheer!

**Next Regular Meeting: Monday November 8, 7PM, Alva Community Center**

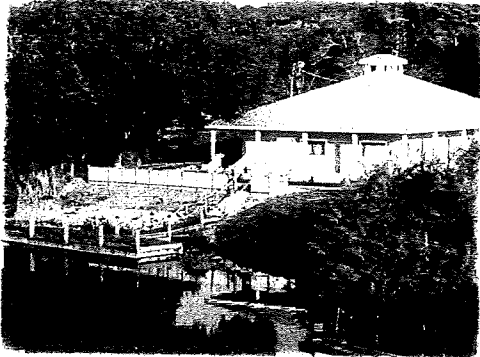


# ALVA

*A Living Vision of Alva*

Alva Inc. is dedicated to preserving the tranquility and beauty of Alva  
 P O. Box 222, Alva FL 33920  
[www.alvafl.org](http://www.alvafl.org)  
 January 2011 Newsletter

## NEW ALVA DESTINATION - SPRING OPENING



Coming Soon to downtown Alva: Riverside Café Bait and Tackle Shop located at the river next to the post office. The menu will have a Caribbean slant and include beef, pork chicken, beans, rice soup, sandwiches, beer and wine. Bait and tackle will be available with initial opening times in the 10 am to 4-5 pm range. Target opening date is early March. Future plans include a bakery, retail shop and boat gas. Mr. Richard Viera, owner's representative, has been working with Alva inc. President Ruby Daniels on design details. Please contact Ruby or bring your input to the January meeting. Alva welcomes Mr. Viera and the new initiative to the community



## 2010 Alva Home Sales & Vision Test

Listed below are homes sold within the Alva zip code (33920) area during 2010 through Realtor® Association of Greater Fort Myers and the Beach Inc. Compiled by Jim Green Realty. This article also doubles as a vision test!

<b>Total Sold</b>	4207 20th St	\$55,000	16521 Goldenrod Ln #203	\$163,000	21120 N. River Rd	\$265,000	2200 Safe Harbour Ct	\$40,000
<b>98</b>	4001 E 21st St	\$48,500	16580 Goldenrod Ln #103	\$117,000	900 Norris Rd	\$199,414	2101 Scrub Olive Ct	\$195,900
<b>Waterfront</b>	2901 E 23rd St	\$56,000	16580 Goldenrod Ln #102	\$101,000	17200 Oak Creek Rd	\$205,000	2114 Scrub Olive Ct	\$365,000
<b>28</b>	4401 E 23rd St	\$39,900	1960 Goode Ave	\$200,000	17781 Oak Creek Rd	\$189,900	2161 Sebastian Ct	\$190,000
<b>Bank Owned</b>	10 Aloe St	\$34,000	2006 Grayson Ave	\$64,875	16700 Oak Grove Ct	\$235,000	2131 Silk Bay Blvd	\$470,000
<b>52</b>	3255 Aralia Ct	\$102,000	2121 Hamilton Ave	\$36,000	16731 Oak Grove Ct	\$255,000	2770 Styles Rd	\$194,000
<b>Short Sales</b>	17361 Broadway St	\$45,000	2318 Hamilton Ave	\$74,000	17004 Oakstead Dr	\$220,000	2257 Summersweet Dr	\$85,000
<b>22</b>	2111 Canton Ave	\$59,000	3288 Hampton Blvd	\$190,000	12350-20 Old Rodeo Dr	\$3,060,000	17720 Taylor Rd	\$199,900
<b>Average Price</b>	2317 Canton Ave	\$29,500	3298 Hampton Blvd	\$113,000	18090 N Olga Dr	\$953,000	15100 Terrell Dr	\$170,000
<b>\$232,258</b>	2300 Carter Ln	\$55,000	2280 Herzog Rd	\$86,000	3751 Packinghouse Rd	\$225,550	15280 Terrell Dr	\$250,000
<b>Median Price</b>	3312 Chestnut Grove	\$500,000	2470 Hickey Creek Rd	\$159,500	17301 Palm Beach Blvd	\$798,000	2010 Truman Ave	\$48,000
<b>\$119,250</b>	3319 Chestnut Grove Dr	\$397,262	2317 Jackson Ave	\$96,000	21480 Pearl St	\$15,000	2014 Truman Ave	\$30,000
	3330 Chestnut Grove Dr	\$370,000	2505 Jetridge St	\$58,900	22141 Pearl St	\$375,000	22551 Tuckahoe Rd	\$89,900
	21951 Claytor Rd	\$192,500	2301 Leavitt Rd	\$118,500	2008 Polar Ave	\$41,000	23031 Tuckahoe Rd	\$285,000
	2207 Columbus Ave	\$125,000	2381 Leavitt Rd	\$100,000	19931 N River Rd	\$80,000	3148 Walnut Grove Ln	\$275,000
	1700 E Court Pl	\$92,350	2116 Leroy Ave	\$34,000	20150 N River Rd	\$480,000	2150 Waylife Ct	\$135,000
	17950 Cypress Creek Rd	\$202,000	19630 Little Ln	\$150,000	21620 N River Rd	\$155,000	2009 Wells Ave	\$76,000
	14130 Duke Hwy	\$800,000	2318 Louis Ave	\$76,000	23621 N River Rd	\$285,000	2104 Wells Ave	\$64,900
	14180 Duke Hwy	\$750,000	22381 Lucky Lee Ln	\$120,000	15910 River Creek Ct	\$210,000	1550 Werner Dr	\$159,000
	14560 Duke Hwy	\$225,000	2005 McArthur Ave	\$61,400	18370 River Estates Ln	\$155,000	1650 Werner Dr	\$100,000
	1710 East Court Pl	\$68,900	2100 Monroe Ave	\$40,000	18540 River Estates Ln	\$235,000	15194 Yellow Wood	\$180,000
	22031 Edwards Dr	\$60,000	2108 Monroe Ave	\$76,500	2014 Robert Ave	\$45,000	15348 Yellow Wood Dr	\$108,000
	4 Elder St	\$50,500	2309 Monroe Ave	\$18,900	2011 Roosevelt Ave	\$58,000	15387 Yellow Wood Dr	\$118,000
	18890 Fox Run Rd	\$140,000	2318 Monroe Ave	\$60,000	2016 Roosevelt Ave	\$69,000		
	2230 Golden Aster Dr	\$198,900	2440 Moore Ave	\$203,600	2123 Roosevelt Ave	\$50,000		

## Alva EMS Service - Cut?

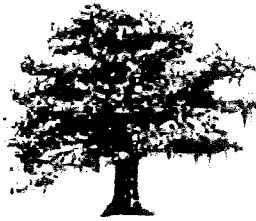
Please attend the January meeting to hear about possible reduction in Alva EMS services as part of the county budget reduction process.

Members and non-members alike are welcome at all Alva Inc. Meetings - Please Come!

## Community Calendar

January 10 (Monday) Alva Inc. Membership Meeting, 7PM, Alva Community Center.  
 January 18 (Tuesday) ELCC, 6:30PM, Olga Community Center.

Next Regular Meeting: Monday January 10, 7PM, Alva Community Center



# ALVA

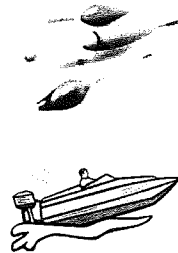
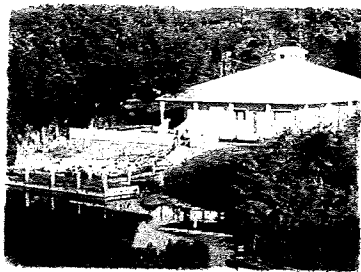
*A Living Vision of Alva*

Alva Inc. is dedicated to preserving the tranquility and beauty of Alva  
P O. Box 2022, Alva FL 33920

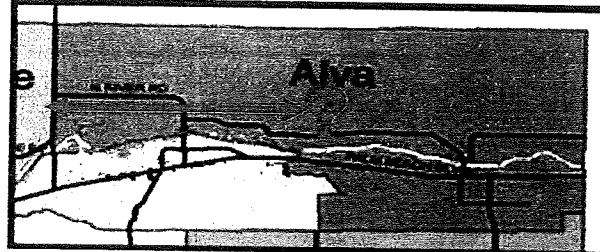
[www.alvafl.org](http://www.alvafl.org)

February 2011 Newsletter

## COMING SOON!



## TWO PLANS OR ONE?



The issue remains on the table. County Staff is encouraging area residents to express their planning views at the North Olga Planning Panel meetings scheduled monthly on the third Thursday. *Next meeting is Thursday, February 17, 6 PM at the Bayshore Fire Station. Please see attached letter from ALVA Inc. to Lee Staff (email newsletters only). Your silence is your consent!*

## ALVA Inc. Meeting Activities

**Alva EMS Service Reduction?** Update at the February meeting.

**Alva Wayside Park.** A draft master concept plan has been prepared and will be presented at the February 14th ALVA Inc. meeting.

**Lee Plan 7-year Update (EAR)** LPA votes on transmittal to BOCC at 8:30 am meeting February 14th. ALVA Inc. supports the EAR.

**Alva Community Plan** Lee Staff comments on draft plan will be presented at the February 14th ALVA Inc. meeting.

**Conservation 2020 Purchase of Persimmon Ridge Area**

**Land.** Possibilities/status presented at February 14th ALVA Inc. meeting.

**Alva Land Development Code Changes.** Discussion starts at February 14th ALVA Inc. meeting. Please bring your thoughts and ideas.

Members and non-members alike are welcome at all Alva Inc. Meetings - Please Come!

## Community Calendar

February 14 (Monday) Alva Inc. Membership Meeting, 7 PM, Alva Community Center. See agenda items above  
February 17 (Thursday) North Olga Planning Panel Meeting, 6 PM, Bayshore Fire Station, community planning.  
February 22 (Tuesday) ELCC, 6:30PM, Olga Community Center.

Next Regular Meeting: Monday February 14, 7 PM, Alva Community Center



# ALVA

*A Living Vision of Alva*

Alva Inc. is dedicated to preserving the tranquility and beauty of Alva  
P O. Box 2022, Alva FL 33920  
[www.alvaf1.org](http://www.alvaf1.org)  
**March 2011 Newsletter**

Alva Garden Club Annual


## Plant Sale and Feast

Plants • Vegetables • Used Books • Pies • Strawberries • Short Cake • Hot Dogs  
Museum Tours • Fruit • Home Grown Items • Home Baked Goods  
Attractive Women in Period Dress—Don't Miss It!


10:00 a.m. - 4:00 p.m. at the Alva Community Center, 10 Pearl Street

Thanks to the Ladies, Yoder Brothers and C&L Farms!

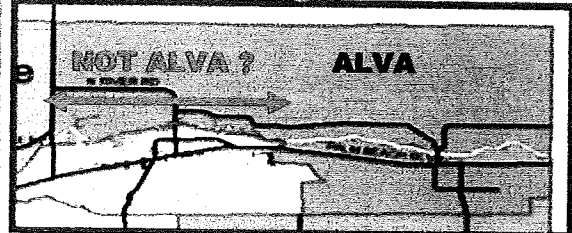
### Honoring Alva Veterans



An effort has been initiated to honor Alva Veterans. Research is underway to identify those who have served. The idea is to eventually construct a memorial, possible at the Alva Wayside Park. For information or to contribute names, please contact T.J. Matekovic at 671-7737



### Joint Planning Discussions




The North Olga Planning Panel and Lee Staff have been invited to the March 14 Alva Inc. Meeting. The goal is to achieve common planning goals, objectives and policies that would apply throughout the Alva Community Planning Area. Please come and share your views!

Communities included in the proposed North Olga Plan: North River Oaks, Duke Highway/Tarroll Drive, Otterwater Way/Elmwood Drive, North River Estates, Telegraph Creek Estates, Riverwind Cove, Interlochen Dr./Traverse Lane/Franklin Locke Area, Serengeti, Taylor Road area, Lyndhurst Lane area, and Frontiers Creek area.

### Telegraph Creek Preserve

A Public Meeting on the Telegraph Creek Preserve Land Stewardship Plan will be held on Tuesday March 15, 2011, at 6:30 P.M. at the Alva Community Center. The Stewardship Plan is available for review at the Riverdale Public Library and at [www.conservation2020.org/stewardshipplans.cfm](http://www.conservation2020.org/stewardshipplans.cfm) under Telegraph Creek Preserve.

Artists • Writers • Singers  
Musicians • Dance •



Join Alva Inc. for a special event... (text is partially obscured and difficult to read)

Members and non-members alike are welcome at all Alva Inc. Meetings - Please Come!



See ya there!



## Community Calendar

- March 11 (Friday)** Movie Under the Stars Event, Alva Elementary PTO. Contact: Sharon Garcia, 728-2494
- March 12 (Saturday)** Alva Garden Club Plant Sale and Festival 9AM -1PM, Alva Museum .
- March 14 (Monday)** ALVA Inc. Meeting, 7PM, Alva Community Center, joint planning discussions with North Olga Planning Panel
- March 15 (Tuesday)** Telegraph Creek Preserve Land Stewardship Plan, 6:30 PM, Alva Community Center
- March 15 (Tuesday)** ELCC, 6:30PM, Olga Community Center.

Next Regular Meeting: Monday March 14, 7PM, Alva Community Center



# ALVA

*A Living Vision of Alva*

Alva Inc. is dedicated to preserving the tranquility and beauty of Alva  
 P O. Box 2022, Alva FL 33920  
[www.alvafl.org](http://www.alvafl.org)  
**April 2011 Newsletter**

## North Olga Plan Opposed by North Olga Residents

### Residents' Declaration Submitted to LPA

Dear LPA Member:

March 24 2011

Find below some resolutions by us four Western Alva Residents who have been annexed into a community calling itself North Olga. All of us are shocked that we no longer live in Alva and that our emphasis on rural life based on low density and natural landscapes could be compromised. We will discuss this with you and our neighbors further at the LPA meeting on Monday, March 28. Please be assured that contrary to what you may have been told there is considerable controversy on this annexation. We have been accustomed to a highly democratic process of decision making under Alva, Inc. for community involvement and have been rudely awakened by the autocratic structure of the North Olga Planning Panel as recently as the LAST meeting on March 17, 2011.

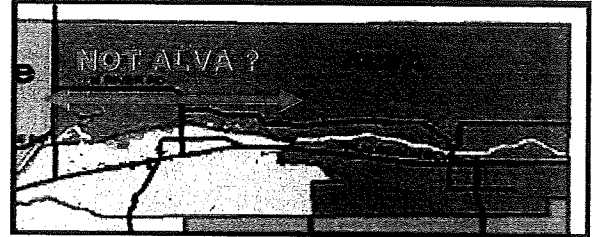
We Western Alva residents, who have been active in our community and in our community's planning efforts, make the following declarations concerning a proposal to split the Alva planning district into two separate parts:

1. We strongly prefer that Alva not be divided into a "North Olga" planning district and an Alva planning district. Alva has planned and continues to plan more than adequately for all the citizens of Alva from Hwy 31 to the Hendry County line. Any division weakens and confuses the attempt to keep the region relatively pristine as compared to the congestion and urbanization and suburbanization of much of Lee County.
2. We deny that Alva and Western Alva (AKA "North Olga") are two distinct communities. They are so similar that division only drives an artificial wedge between one community at the Caloosahatchee Regional park line. Instead of dividing this unified community, county staff and the Board of County Commissioners should be helping to foster connectivity for all of Alva through scenic status for Hwy 78, common walking trails, horse trails and bike paths, and facilitation of all Alva citizens in the planning process. This is best accomplished by utilizing the Alva Community Plan for the entire region in the 33920 zip code area.
3. If staff and the Board of County Commissioners insist on this artificial division due to political pressures from one group of individuals then every effort must be made to foster the common goals of the citizens of all Alva. Alva and the North Olga Planning Panel must work in unison on any development project that effects the so called Northeast Lee County region. Those goals would include the following points.
4. Both planning groups would have to include clear language that forbids density increases. Clustering is essential.
5. Both planning groups should allow residents and property owners in the area on their governing boards. Meetings must be democratic, transparent, and well communicated in advance. A spirit of inclusiveness and cooperation is essential. The real wishes of the majority of the people MUST always prevail. Minutes must be kept and Roberts Rules of Order observed.
6. Statements in the North Olga plan that exempt development of less than 100 acres from scrutiny must be abandoned. ALL development should be scrutinized.
7. Alva and "North Olga" would have to assign at least one officer to closely communicate all development plans with each other in advance. This would be a major RESPONSIBILITY of each group.

Respectfully submitted,

\*John F. Hawkins  
 \*Denise Houck  
 \*William Redfern, Jr.  
 \*Michael Stottmeyer

\*These individuals all live in the Western Alva contested area referred to as "North Olga" and are current and active members of the Alva, Inc. planning group. They were all elected into their office by a majority of the members at various Alva, Inc. meetings. "North Olga" has long enjoyed heavy representation from the Western Alva region from the Caloosahatchee Regional Park west to Hwy. 31 and north of the Caloosahatchee River.



### North Olga Residents Request to be Heard

At the March 28th Local Planning Agency meeting, approximately 30 residents of the North Olga area spoke out about the North Olga Planning Panel's lack of democratic process and the proposed plan's lack of protection against density increases. Dr. Van Roskel, North Olga Planning Panel President, the Panel's attorney and Panel's planner spoke for the plan and the process. Lee staff expressed their intention to schedule a formal LPA Hearing on the plan in April (25<sup>th</sup>) or May (23<sup>rd</sup>). In addition, dialogue continues between Alva Inc.'s, and North Olga Planning Panel's presidents and consultants in an attempt to arrive at a community planning consensus. Prior to the LPA hearing, residents are encouraged to express their opinions at the Alva Inc. and North Olga Planning Panel meetings (see community calendar below). **Your silence is your consent!** Communities included in the proposed North Olga Plan: North River Oaks, Duke Highway/Tamell Drive, Otterwater Way/Elmwood Drive, North River Estates, Telegraph Creek Estates, Riverwind Cove, Interlochen Dr./Traverse Lane, Franklin Locks Area, Serangeti, Taylor Road area, Lynchurst Lane area, and Fichters Creek area.



### Fight Cancer! Join Relay for Life

The annual East Lee County Relay for Life will be held Friday May 20th at Riverdale High School. The event begins at 6:00pm with the celebration for our cancer survivors and runs through the night, ending at noon on Saturday May 21st. There will be lots of activities and fund raising for the American Cancer Society. For information to become involved, please go to [www.relayforlife.org/eastleecounty/](http://www.relayforlife.org/eastleecounty/) Look for *All About A Cure* and consider joining. Don't worry—by joining the team you are not required to stay all night. If you would like to make a donation you can do so on the same web-site - look for Denise Houck. It is a great event and we would love to see

Members and non-members alike are welcome at all Alva Inc. meetings - Please come and share your thoughts!

## Alva Area (33920) Real Estate Sales Jan - March 2011

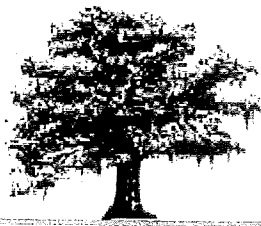
Homes				Land							
Address	Price	Address	Price	Address	Price	Ac.	\$/Ac.	Address	Price	Ac.	\$/Ac.
15655 Angelica Dr	\$117,400	2123 McArthur Ave	\$62,000	3606 E 21st St	\$2,499	0.25	\$ 9,996	22101 N Persimmon Pt Dr	\$110,000	10.00	\$ 11,000
15702 Angelica Dr	\$136,900	16731 Oak Grove Ct	\$335,000	2118 Canton Ave	\$2,500	0.51	\$ 4,941	15800 River Creek Ct	\$185,000	2.00	\$ 92,500
20225 Buck Crest Ln	\$350,000	18226 Palm Beach Blvd	\$30,100	23008 Crookedwood	\$17,200	1.25	\$13,738	2220 Robert Ave	\$2,500	0.50	\$ 5,000
2210 Canton Ave	\$34,400	17901 Persimmon Ridge Rd	\$128,000	22951 Florida Rosemary Ln	\$15,000	1.23	\$12,165	2100 Scrub Olive Ct	\$15,000	1.09	\$ 13,812
20665 Casaly Dr	\$120,000	2200 Robert Ave	\$51,500	2317 hamilton	\$7,250	1.00	\$ 7,250	2023 Silk Bay Blvd	\$15,150	1.43	\$ 10,617
2560 charleston	\$15,100	2110 Scott Ave	\$55,000	2107 Louis Ave	\$2,500	0.50	\$ 5,000	2053 Silk Bay Blvd	\$9,600	1.12	\$ 8,541
15067 Citrus Tree Ct	\$200,000	17150 Scout Camp Rd	\$625,000	2113 Louis Ave	\$2,500	0.50	\$ 4,990	2200 Silk Bay Blvd	\$24,000	1.89	\$ 12,678
21901 Edwards Dr	\$115,000	2214 Summersweet Dr	\$99,000	2316 Louis Ave	\$2,500	0.50	\$ 5,000				
15004 Great Laurel Ct	\$240,000	2317 Summersweet Dr #1	\$108,000								
16001 Herons View Dr	\$440,000	18061 Traverse Dr	\$460,000								
2208 Lincoln Park Ave	\$29,900	18151 Traverse Dr	\$187,400								
22280 Luckey Lee Ln	\$110,000	2317 Truman Ave	\$34,000								

Homes - Average: \$170,154 Median \$116,200  
 Raw Land - Average \$/ac: \$17,382 Off-River: \$10,481

The statistical data provided is based on information compiled from the FLORIDA GULF COAST MLS, INC. for MLS sales during the period January 1 2011 through March 31 2010. Prepared by Jim Green Realty.

- April 11 (Monday) ALVA Inc. Meeting, 7PM, Alva Community Center
- April 19 (Tuesday) ELCC, 6:30PM, Olga Community Center.
- April 21 (Thursday) North Olga Planning Panel Meeting, 6 PM, Bayshore Fire Station, community planning.
- April 25 (Monday) Local Planning Agency 8:30AM, BOCC Chambers, possibly: North Olga Plan Hearing
- May 9 (Monday) Alva Inc. Membership Meeting, 7PM, Alva Community Center.

**Next Regular Meeting: Monday April 11, 7PM, Alva Community Center**



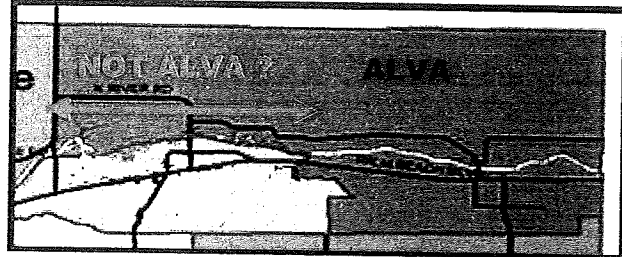
# ALVA

*A Living Vision of Alva*

Alva Inc. is dedicated to preserving the tranquility and beauty of Alva  
P O. Box 2022, Alva FL 33920  
[www.alvafl.org](http://www.alvafl.org)  
May 2011 Newsletter

## North Olga and Alva Plans Hearings Scheduled

In late May and early June the Alva and North Olga Plans, under the umbrella of the Northeast Lee County Plan, will be voted on by the Local Planning Agency and the Board of County Commissioners. Lee Staff has stated their intention to recommend transmittal. Please see Community Calendar below for meeting dates and times. **Your silence is your consent!**



The Northeast Lee County Vision Statement, a three page document, will apply to both areas. The separate North Olga and Alva Plans fall under the Vision Statement. The latest known versions of the three documents are attached to the email version of the Newsletter, and are also attached to the Newsletter posted at [www.alvafla.org](http://www.alvafla.org).

While both plans speak to preserving the rural character, the Alva plan prohibits density increases (except within-area TDR's). The North Olga Plan does not contain similar protective language. Other points of controversy remain between residents of West Alva/North Olga regarding The North Olga Plan: Lack of democratic process for plan development, and changing the area name from Alva. Communities included in the proposed North Olga Plan: North River Oaks, Duke Highway/Terrell Drive, Otterwater Way/Elmwood Drive, North River Estates, Telegraph Creek Estates, Riverwind Cove, Interlochen Dr./Traverse Lane/Franklin Locks Area, Serengeti, Taylor Road area, Lyndhurst Lane area, and Fichters Creek area.



Alva Grade School 19--

Back row L-R : Henry Fichter, Alonzo Lewis, Colin English, Louise Bonniwell, Maurice English, Margaret Fichter, George Bonniwell, Flora English, Helen Scott, Walker Blount, 7, Philip Barney  
seated L-R : Frank Cook, Vivian Lee, Joseph W. Sherrill holding Edwina Parkinson, Charlie Blount, Walter Hicks.



### Fight Cancer! Join Relay for Life

The annual East Lee County Relay for Life will be held Friday May 20th at Riverdale High School. The event begins at 6:00pm with the celebration for our cancer survivors and runs through the night, ending at noon on Saturday May 21st. There will be lots of activities and fund raising for the American Cancer Society. For information to become involved, please go to [www.relayforlife.org/eastleeecounty/fl](http://www.relayforlife.org/eastleeecounty/fl) Look for *All About A Cure* and consider joining. Don't worry—by joining the team you are not required to stay all night. If you would like to make a donation you can do so on the same web-site - look for Denise Houck. It is a great event and we would love to see



Alva-Street Scene - 1916

## Community Calendar

Members and non-members alike are welcome at all Alva Inc. meetings - Please come and share your thoughts!

- May 9 (Monday) ALVA Inc. Meeting, 7PM, Alva Community Center
- May 12 (Thursday) North Olga Planning Panel Meeting, 6 PM, Bayshore Fire Station, community planning.
- May 17 (Tuesday) ELCC, 6:30PM, Olga Community Center.
- May 23 (Monday) Local Planning Agency 8:30AM, BOCC Chambers, possibly: North Olga Plan Hearing
- June 13 (Monday) Alva Inc. Membership Meeting, 7PM, Alva Community Center.
- June 13 (Monday) BOCC North Olga & Alva Plans transmittal hearing, 9:30 AM, BOCC Chambers.

**Next Regular Meeting: Monday May 9, 7PM, Alva Community Center**