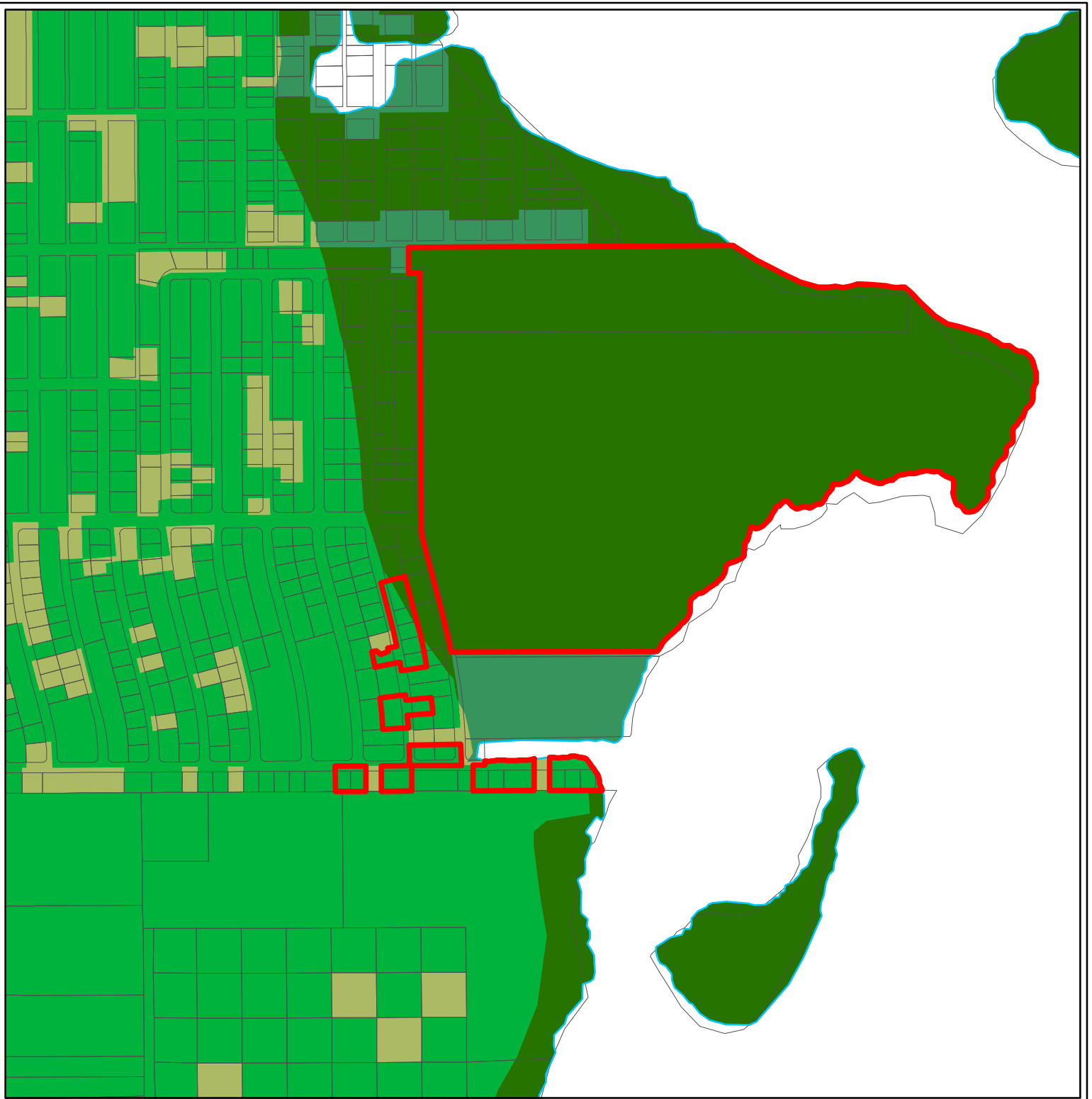


<p><b>FUTURE URBAN AREAS</b></p> <ul style="list-style-type: none"> <li>Intensive Development</li> <li>Central Urban</li> <li>Urban Community</li> <li>Suburban</li> <li>Outlying Suburban</li> <li>Sub-Outlying Suburban</li> <li>Commercial</li> <li>Industrial Development</li> <li>Public Facilities</li> <li>University Community</li> <li>Burnt Store Marina Village</li> <li>Destination Resort Mixed Use Water Dependent</li> </ul>	<p><b>INTERCHANGE AREAS</b></p> <ul style="list-style-type: none"> <li>Industrial Interchange</li> <li>General Interchange</li> <li>General Commercial Interchange</li> <li>Industrial/Commercial Interchange</li> <li>University Village Interchange</li> </ul> <p><b>NEW COMMUNITY</b></p> <ul style="list-style-type: none"> <li>New Community</li> </ul> <p><b>AIRPORT AREAS</b></p> <ul style="list-style-type: none"> <li>Tradeport</li> <li>Airport</li> </ul>	<p><b>NON-URBAN AREAS</b></p> <ul style="list-style-type: none"> <li>Rural</li> <li>Rural Community Preserve</li> <li>Coastal Rural</li> <li>Outer Island</li> <li>Open Lands</li> <li>Density Reduction / Groundwater Resource</li> <li>Conservation Lands Upland</li> </ul> <p><b>ENVIRONMENTALLY CRITICAL AREAS (WETLANDS)</b></p> <ul style="list-style-type: none"> <li>Wetlands</li> <li>Conservation Lands Wetland</li> </ul> <p><b>CPA2009-00008</b></p> <ul style="list-style-type: none"> <li>Subject Property To Conservation Lands</li> </ul>
---	---	---

## CPA2009-00008 - CONSERVATION LANDS EXISTING FUTURE LAND USE DESIGNATIONS

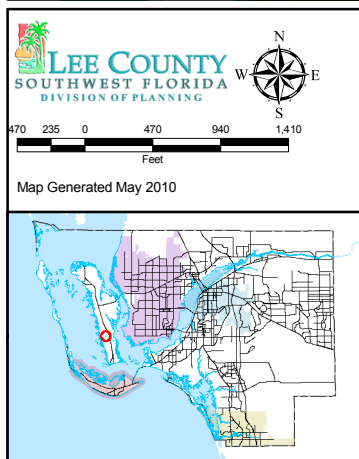
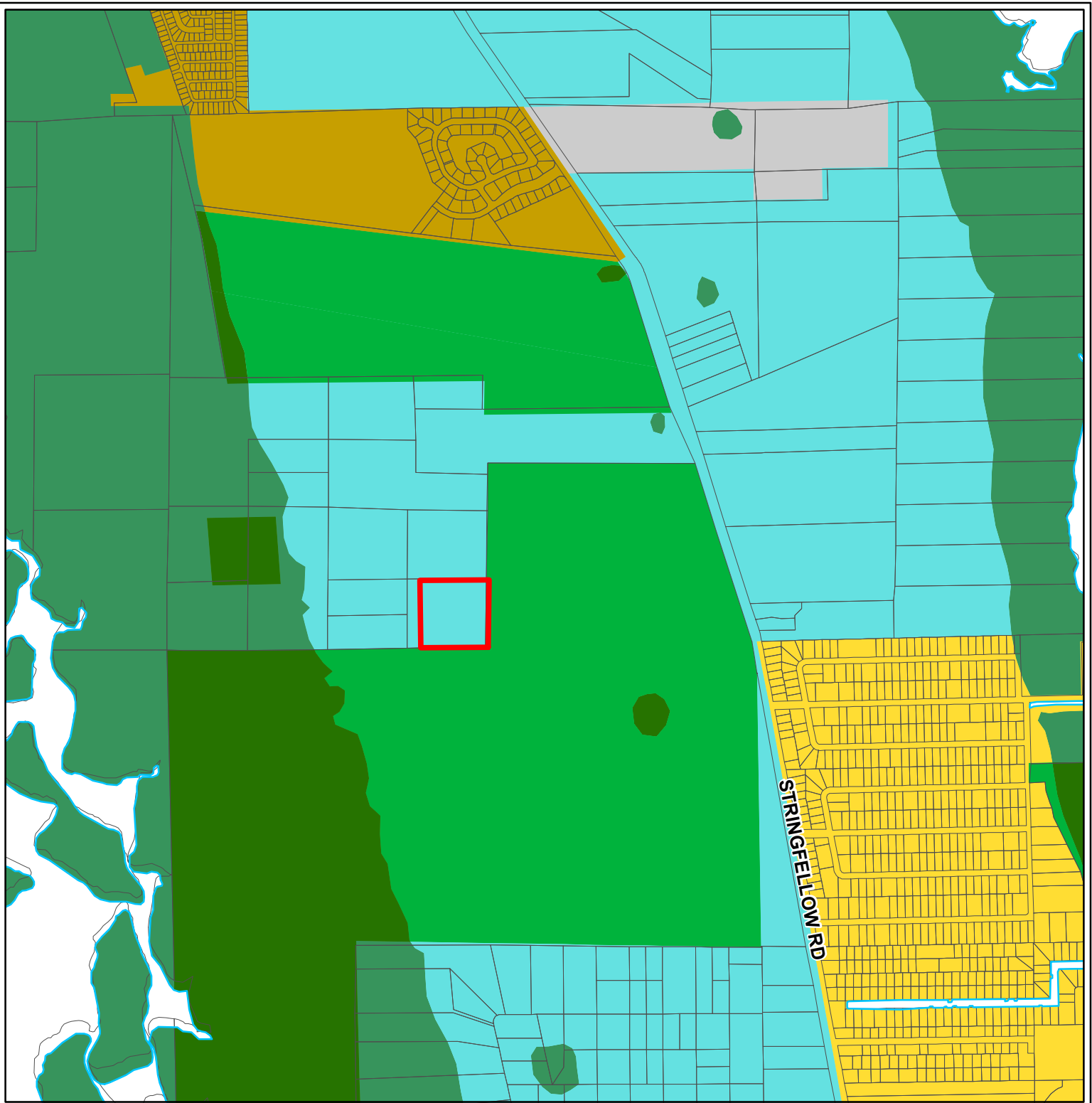


Map Generated May 2010

- |   |   |   |
|---|---|---|
| <p><b>FUTURE URBAN AREAS</b></p> <ul style="list-style-type: none"> <li>Intensive Development</li> <li>Central Urban</li> <li>Urban Community</li> <li>Suburban</li> <li>Outlying Suburban</li> <li>Sub-Outlying Suburban</li> <li>Commercial</li> <li>Industrial Development</li> <li>Public Facilities</li> <li>University Community</li> <li>Burnt Store Marina Village</li> <li>Destination Resort Mixed Use Water Dependent</li> </ul> | <p><b>INTERCHANGE AREAS</b></p> <ul style="list-style-type: none"> <li>Industrial Interchange</li> <li>General Interchange</li> <li>General Commercial Interchange</li> <li>Industrial/Commercial Interchange</li> <li>University Village Interchange</li> </ul> <p><b>NEW COMMUNITY</b></p> <ul style="list-style-type: none"> <li>New Community</li> </ul> <p><b>AIRPORT AREAS</b></p> <ul style="list-style-type: none"> <li>Tradeport</li> <li>Airport</li> </ul> | <p><b>NON-URBAN AREAS</b></p> <ul style="list-style-type: none"> <li>Rural</li> <li>Rural Community Preserve</li> <li>Coastal Rural</li> <li>Outer Island</li> <li>Open Lands</li> <li>Density Reduction / Groundwater Resource</li> <li>Conservation Lands Upland</li> </ul> <p><b>ENVIRONMENTALLY CRITICAL AREAS (WETLANDS)</b></p> <ul style="list-style-type: none"> <li>Wetlands</li> <li>Conservation Lands Wetland</li> </ul> <p><b>CPA2009-00008</b></p> <ul style="list-style-type: none"> <li>Subject Property To Conservation Lands</li> </ul> |
|---|---|---|

**CPA2009-00008 - CONSERVATION LANDS  
PROPOSED FUTURE LAND USE DESIGNATIONS**

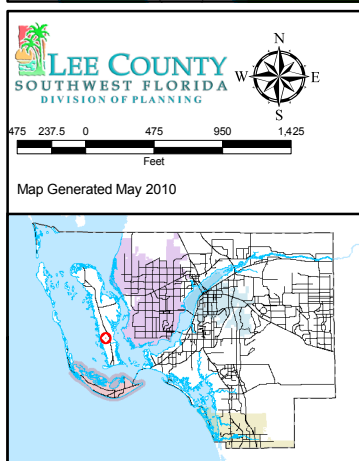
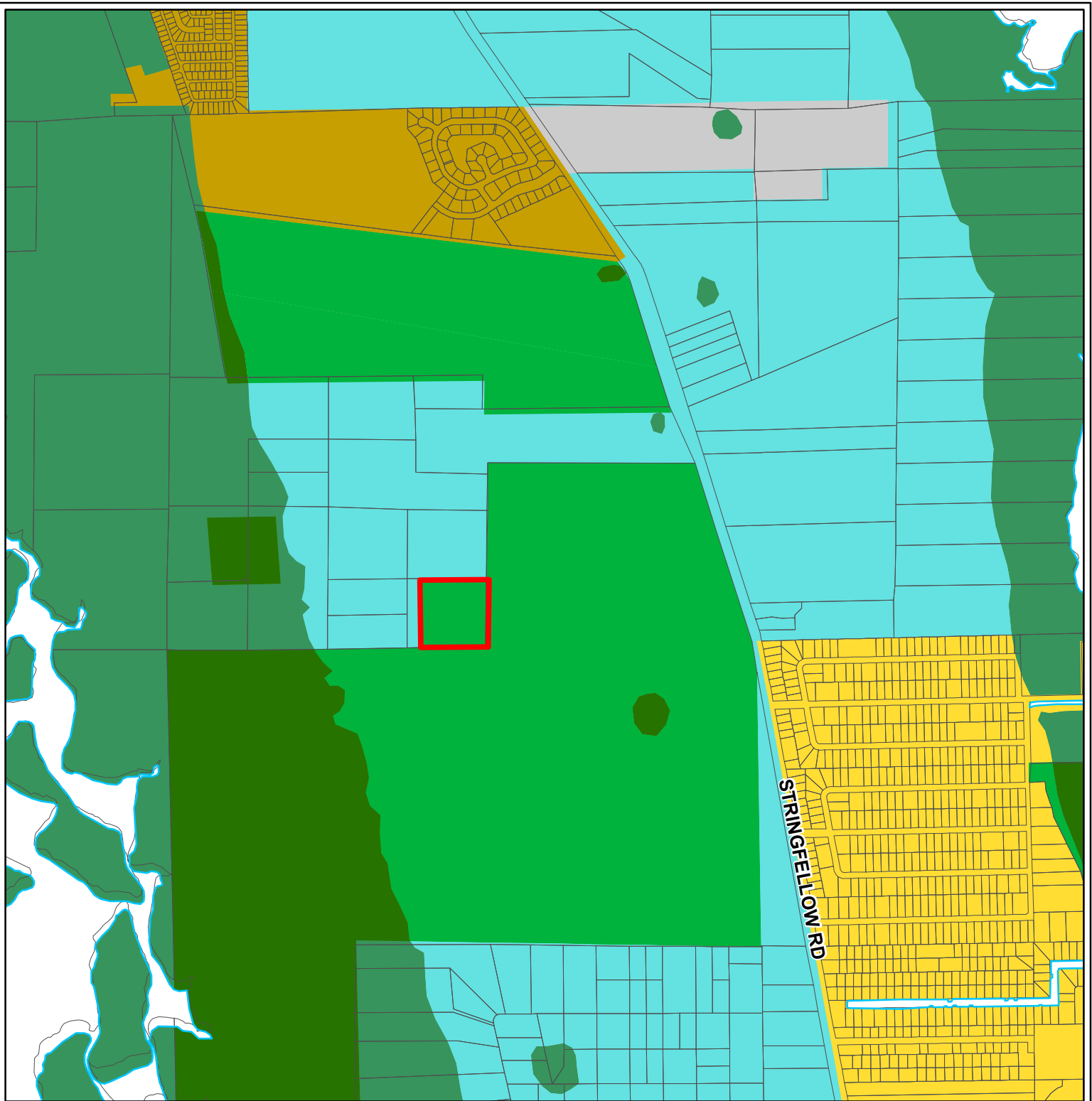
Page 2 of 12



FUTURE URBAN AREAS	INTERCHANGE AREAS	NON-URBAN AREAS
Intensive Development	Industrial Interchange	Rural
Central Urban	General Interchange	Rural Community Preserve
Urban Community	General Commercial Interchange	Coastal Rural
Suburban	Industrial/Commercial Interchange	Outer Island
Outlying Suburban	University Village Interchange	Open Lands
Sub-Outlying Suburban		Density Reduction / Groundwater Resource
Commercial	<b>NEW COMMUNITY</b>	Conservation Lands Upland
Industrial Development	New Community	<b>ENVIRONMENTALLY CRITICAL AREAS (WETLANDS)</b>
Public Facilities	<b>AIRPORT AREAS</b>	Wetlands
University Community	Tradeport	Conservation Lands Wetland
Burnt Store Marina Village	Airport	<b>CPA2009-00008</b>
Destination Resort Mixed Use Water Dependent	MiddleRowSpacer	Subject Property To Conservation Lands

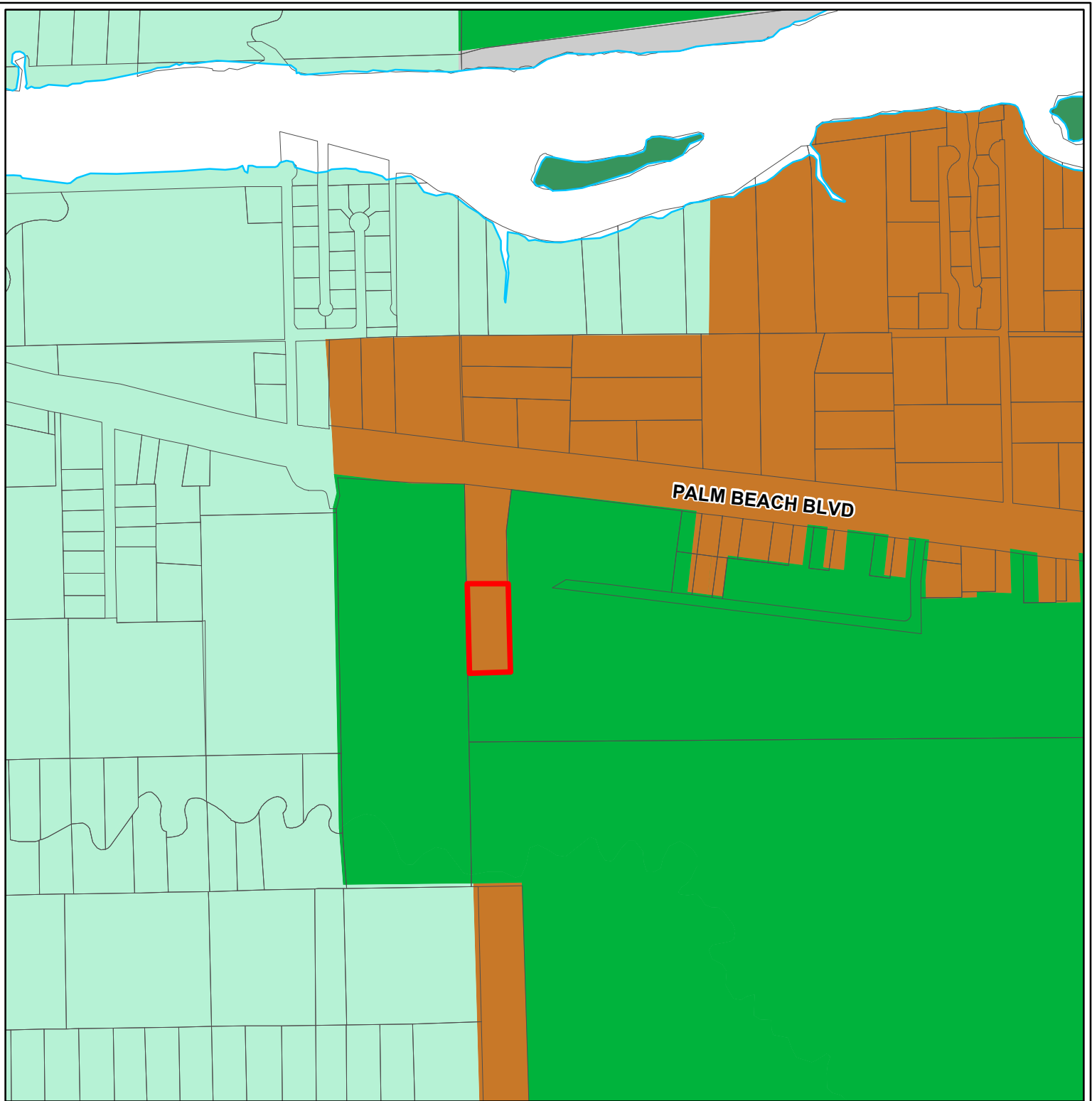
**CPA2009-00008 - CONSERVATION LANDS  
EXISTING FUTURE LAND USE DESIGNATIONS**

Page 3 of 12



FUTURE URBAN AREAS	INTERCHANGE AREAS	NON-URBAN AREAS
<ul style="list-style-type: none"> <li><span style="color: #f08080;">■</span> Intensive Development</li> <li><span style="color: #800000;">■</span> Central Urban</li> <li><span style="color: #ffa500;">■</span> Urban Community</li> <li><span style="color: #ffcc00;">■</span> Suburban</li> <li><span style="color: #ffff00;">■</span> Outlying Suburban</li> <li><span style="color: #ffff00;">■</span> Sub-Outlying Suburban</li> <li><span style="color: #ff0000;">■</span> Commercial</li> <li><span style="color: #ff00ff;">■</span> Industrial Development</li> <li><span style="color: #cccccc;">■</span> Public Facilities</li> <li><span style="color: #808080;">■</span> University Community</li> <li><span style="color: #0000ff;">■</span> Burnt Store Marina Village</li> <li><span style="color: #0000ff;">■</span> Destination Resort Mixed Use Water Dependent</li> </ul>	<ul style="list-style-type: none"> <li><span style="color: #0000ff;">■</span> Industrial Interchange</li> <li><span style="color: #ccccff;">■</span> General Interchange</li> <li><span style="color: #00bfff;">■</span> General Commercial Interchange</li> <li><span style="color: #008080;">■</span> Industrial/Commercial Interchange</li> <li><span style="color: #ffcc99;">■</span> University Village Interchange</li> </ul> <p><b>NEW COMMUNITY</b></p> <ul style="list-style-type: none"> <li><span style="color: #add8e6;">■</span> New Community</li> </ul> <p><b>AIRPORT AREAS</b></p> <ul style="list-style-type: none"> <li><span style="color: #808080;">■</span> Tradeport</li> <li><span style="color: #333333;">■</span> Airport</li> </ul>	<ul style="list-style-type: none"> <li><span style="color: #c8e6c9;">■</span> Rural</li> <li><span style="color: #81c784;">■</span> Rural Community Preserve</li> <li><span style="color: #4dd0e1;">■</span> Coastal Rural</li> <li><span style="color: #81c784;">■</span> Outer Island</li> <li><span style="color: #81c784;">■</span> Open Lands</li> <li><span style="color: #81c784;">■</span> Density Reduction / Groundwater Resource</li> <li><span style="color: #008000;">■</span> Conservation Lands Upland</li> </ul> <p><b>ENVIRONMENTALLY CRITICAL AREAS (WETLANDS)</b></p> <ul style="list-style-type: none"> <li><span style="color: #008000;">■</span> Wetlands</li> <li><span style="color: #008000;">■</span> Conservation Lands Wetland</li> </ul> <p><b>CPA2009-00008</b></p> <ul style="list-style-type: none"> <li><span style="color: #ff0000; border: 1px solid red;">■</span> Subject Property To Conservation Lands</li> </ul>

## CPA2009-00008 - CONSERVATION LANDS PROPOSED FUTURE LAND USE DESIGNATIONS



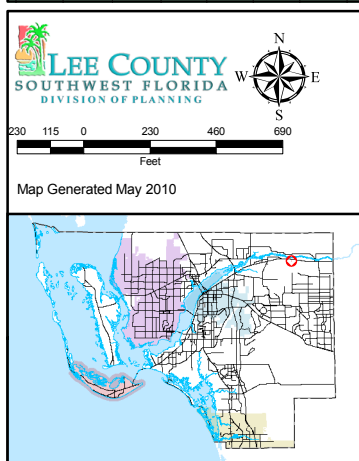
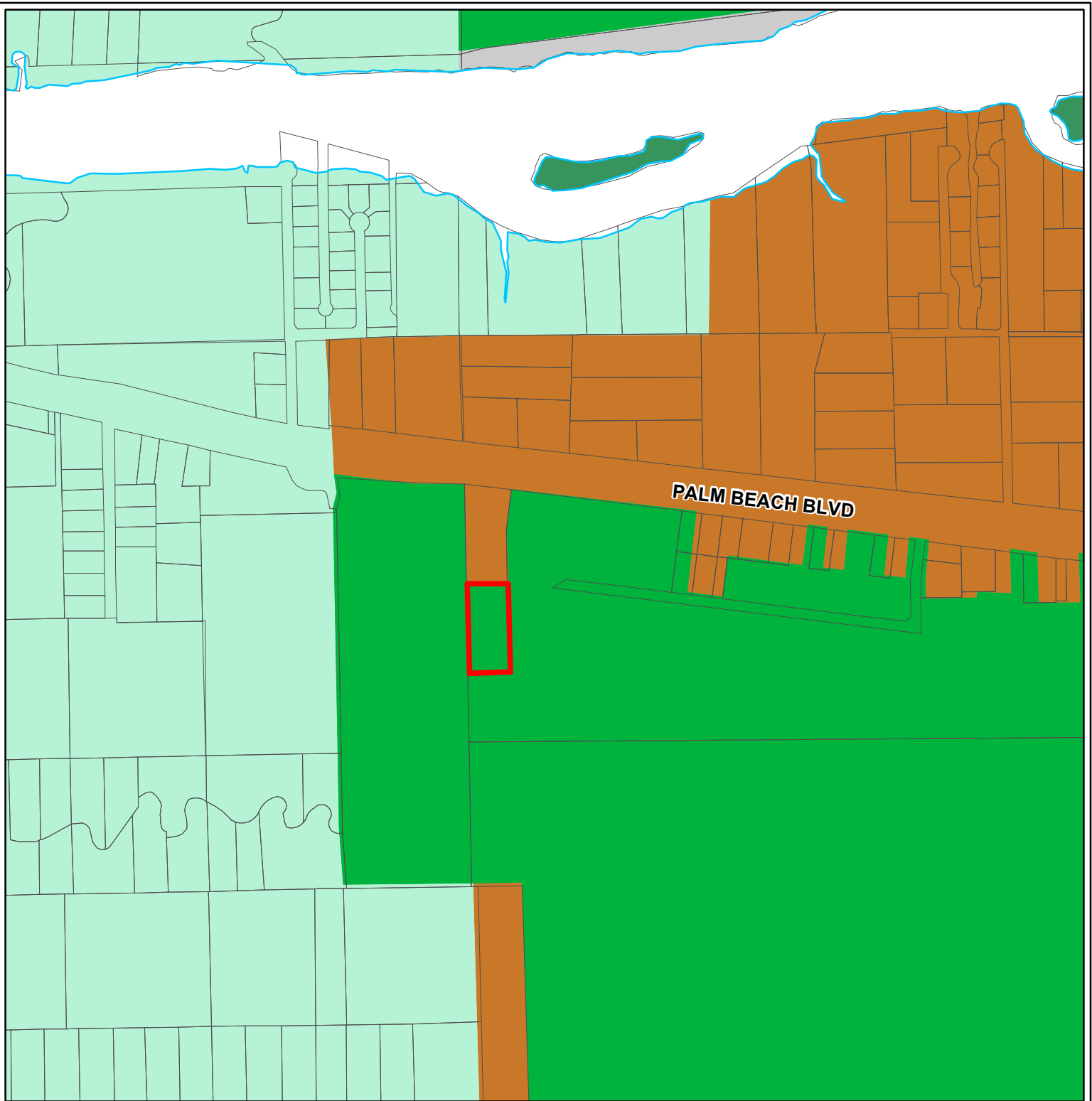
LEE COUNTY  
SOUTHWEST FLORIDA  
DIVISION OF PLANNING

Map Generated May 2010

FUTURE URBAN AREAS	INTERCHANGE AREAS	NON-URBAN AREAS
Intensive Development	Industrial Interchange	Rural
Central Urban	General Interchange	Rural Community Preserve
Urban Community	General Commercial Interchange	Coastal Rural
Suburban	Industrial/Commercial Interchange	Outer Island
Outlying Suburban	University Village Interchange	Open Lands
Sub-Outlying Suburban		Density Reduction / Groundwater Resource
Commercial	<b>NEW COMMUNITY</b>	Conservation Lands Upland
Industrial Development	New Community	<b>ENVIRONMENTALLY CRITICAL AREAS (WETLANDS)</b>
Public Facilities	<b>AIRPORT AREAS</b>	Wetlands
University Community	Tradeport	Conservation Lands Wetland
Burnt Store Marina Village	Airport	<b>CPA2009-00008</b>
Destination Resort Mixed Use Water Dependent	MiddleRowSpacer	Subject Property To Conservation Lands

# CPA2009-00008 - CONSERVATION LANDS EXISTING FUTURE LAND USE DESIGNATIONS

Page 5 of 12

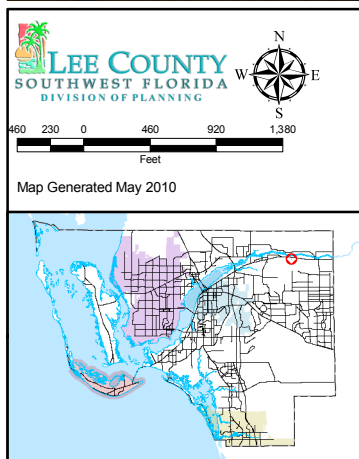
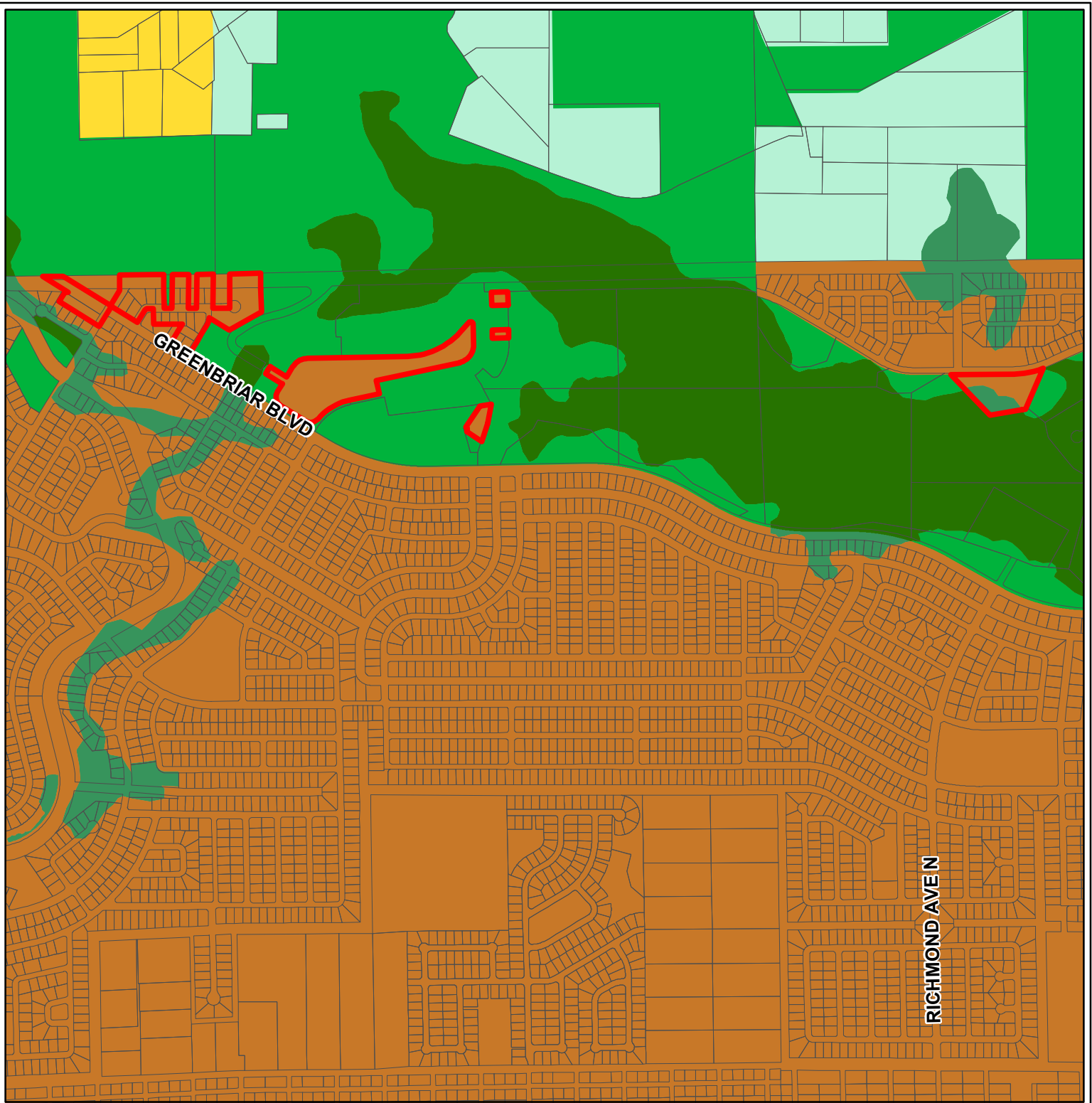


FUTURE URBAN AREAS	INTERCHANGE AREAS	NON-URBAN AREAS
Intensive Development	Industrial Interchange	Rural
Central Urban	General Interchange	Rural Community Preserve
Urban Community	General Commercial Interchange	Coastal Rural
Suburban	Industrial/Commercial Interchange	Outer Island
Outlying Suburban	University Village Interchange	Open Lands
Sub-Outlying Suburban		Density Reduction / Groundwater Resource
Commercial	<b>NEW COMMUNITY</b>	Conservation Lands Upland
Industrial Development	New Community	<b>ENVIRONMENTALLY CRITICAL AREAS (WETLANDS)</b>
Public Facilities	<b>AIRPORT AREAS</b>	Wetlands
University Community	Tradeport	Conservation Lands Wetland
Burnt Store Marina Village	Airport	<b>CPA2009-00008</b>
Destination Resort Mixed Use Water Dependent	MiddleRowSpacer	Subject Property To Conservation Lands

**CPA2009-00008 - CONSERVATION LANDS  
PROPOSED FUTURE LAND USE DESIGNATIONS**

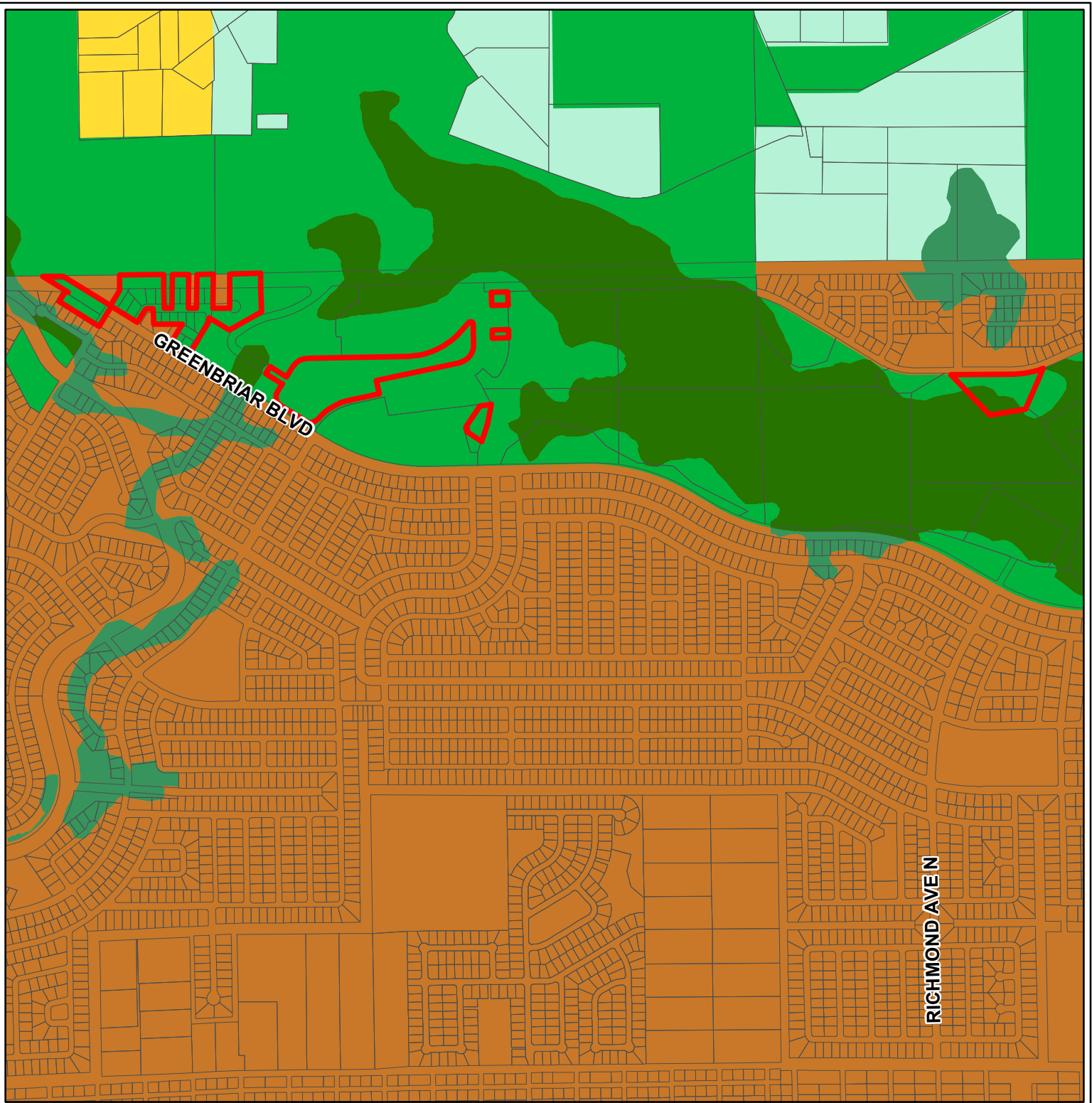
Page 6 of 12





<p><b>FUTURE URBAN AREAS</b></p> <ul style="list-style-type: none"> <li>Intensive Development</li> <li>Central Urban</li> <li>Urban Community</li> <li>Suburban</li> <li>Outlying Suburban</li> <li>Sub-Outlying Suburban</li> <li>Commercial</li> <li>Industrial Development</li> <li>Public Facilities</li> <li>University Community</li> <li>Burnt Store Marina Village</li> <li>Destination Resort Mixed Use Water Dependent</li> </ul>	<p><b>INTERCHANGE AREAS</b></p> <ul style="list-style-type: none"> <li>Industrial Interchange</li> <li>General Interchange</li> <li>General Commercial Interchange</li> <li>Industrial/Commercial Interchange</li> <li>University Village Interchange</li> </ul> <p><b>NEW COMMUNITY</b></p> <ul style="list-style-type: none"> <li>New Community</li> </ul> <p><b>AIRPORT AREAS</b></p> <ul style="list-style-type: none"> <li>Tradeport</li> <li>Airport</li> </ul>	<p><b>NON-URBAN AREAS</b></p> <ul style="list-style-type: none"> <li>Rural</li> <li>Rural Community Preserve</li> <li>Coastal Rural</li> <li>Outer Island</li> <li>Open Lands</li> <li>Density Reduction / Groundwater Resource</li> <li>Conservation Lands Upland</li> </ul> <p><b>ENVIRONMENTALLY CRITICAL AREAS (WETLANDS)</b></p> <ul style="list-style-type: none"> <li>Wetlands</li> <li>Conservation Lands Wetland</li> </ul> <p><b>CPA2009-00008</b></p> <ul style="list-style-type: none"> <li>Subject Property To Conservation Lands</li> </ul>
---	---	---

## CPA2009-00008 - CONSERVATION LANDS EXISTING FUTURE LAND USE DESIGNATIONS



**LEE COUNTY**  
SOUTHWEST FLORIDA  
DIVISION OF PLANNING

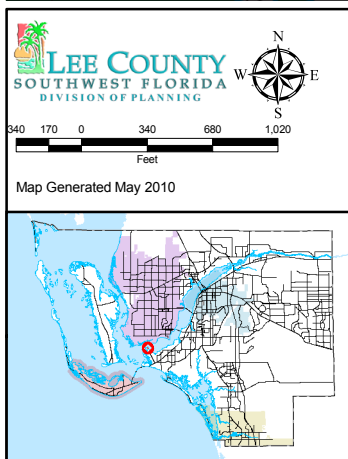
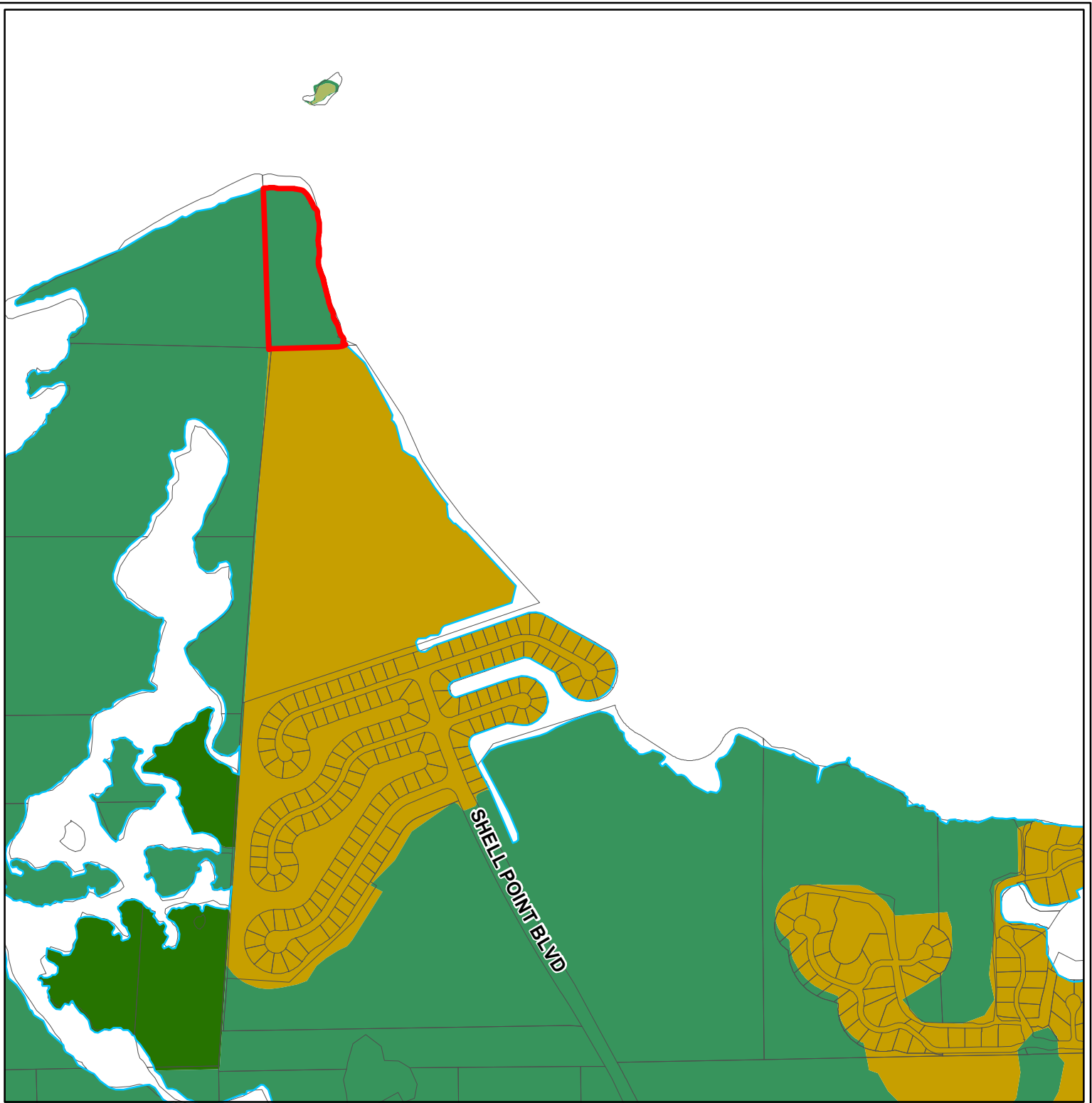
Map Generated May 2010

FUTURE URBAN AREAS	INTERCHANGE AREAS	NON-URBAN AREAS
Intensive Development	Industrial Interchange	Rural
Central Urban	General Interchange	Rural Community Preserve
Urban Community	General Commercial Interchange	Coastal Rural
Suburban	Industrial/Commercial Interchange	Outer Island
Outlying Suburban	University Village Interchange	Open Lands
Sub-Outlying Suburban	<b>NEW COMMUNITY</b>	Density Reduction / Groundwater Resource
Commercial	New Community	Conservation Lands Upland
Industrial Development	<b>AIRPORT AREAS</b>	<b>ENVIRONMENTALLY CRITICAL AREAS (WETLANDS)</b>
Public Facilities	Tradeport	Wetlands
University Community	Airport	Conservation Lands Wetland
Burnt Store Marina Village	MiddleRowSpacer	<b>CPA2009-00008</b>
Destination Resort Mixed Use Water Dependent		Subject Property To Conservation Lands

**CPA2009-00008 - CONSERVATION LANDS  
PROPOSED FUTURE LAND USE DESIGNATIONS**

Page 8 of 12





**FUTURE URBAN AREAS**

- Intensive Development
- Central Urban
- Urban Community
- Suburban
- Outlying Suburban
- Sub-Outlying Suburban
- Commercial
- Industrial Development
- Public Facilities
- University Community
- Burnt Store Marina Village
- Destination Resort Mixed Use Water Dependent

**INTERCHANGE AREAS**

- Industrial Interchange
- General Interchange
- General Commercial Interchange
- Industrial/Commercial Interchange
- University Village Interchange

**NEW COMMUNITY**

- New Community

**AIRPORT AREAS**

- Tradeport
- Airport

**NON-URBAN AREAS**

- Rural
- Rural Community Preserve
- Coastal Rural
- Outer Island
- Open Lands
- Density Reduction / Groundwater Resource
- Conservation Lands Upland

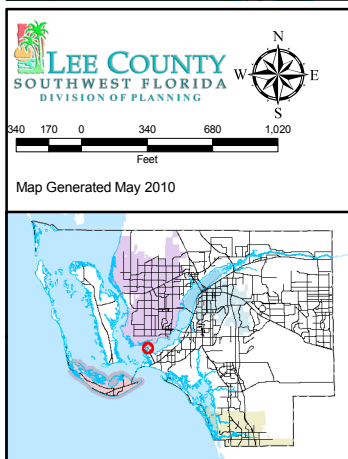
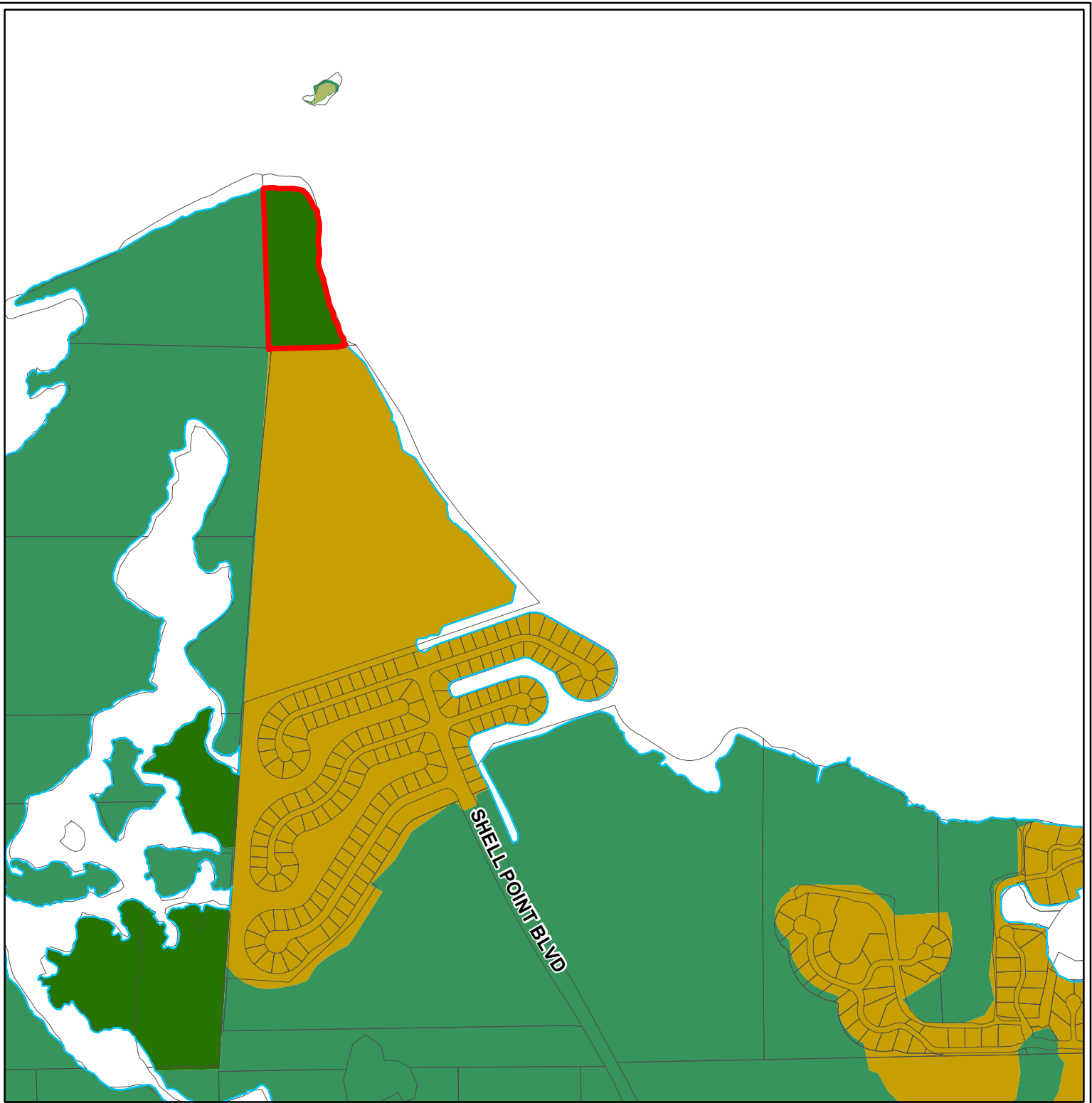
**ENVIRONMENTALLY CRITICAL AREAS (WETLANDS)**

- Wetlands
- Conservation Lands Wetland

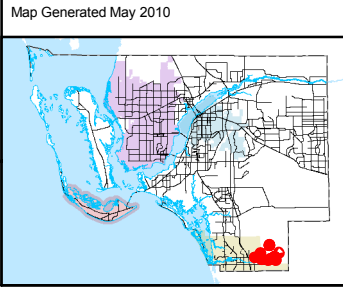
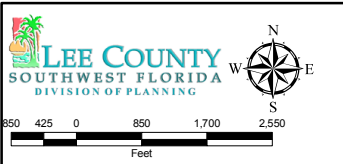
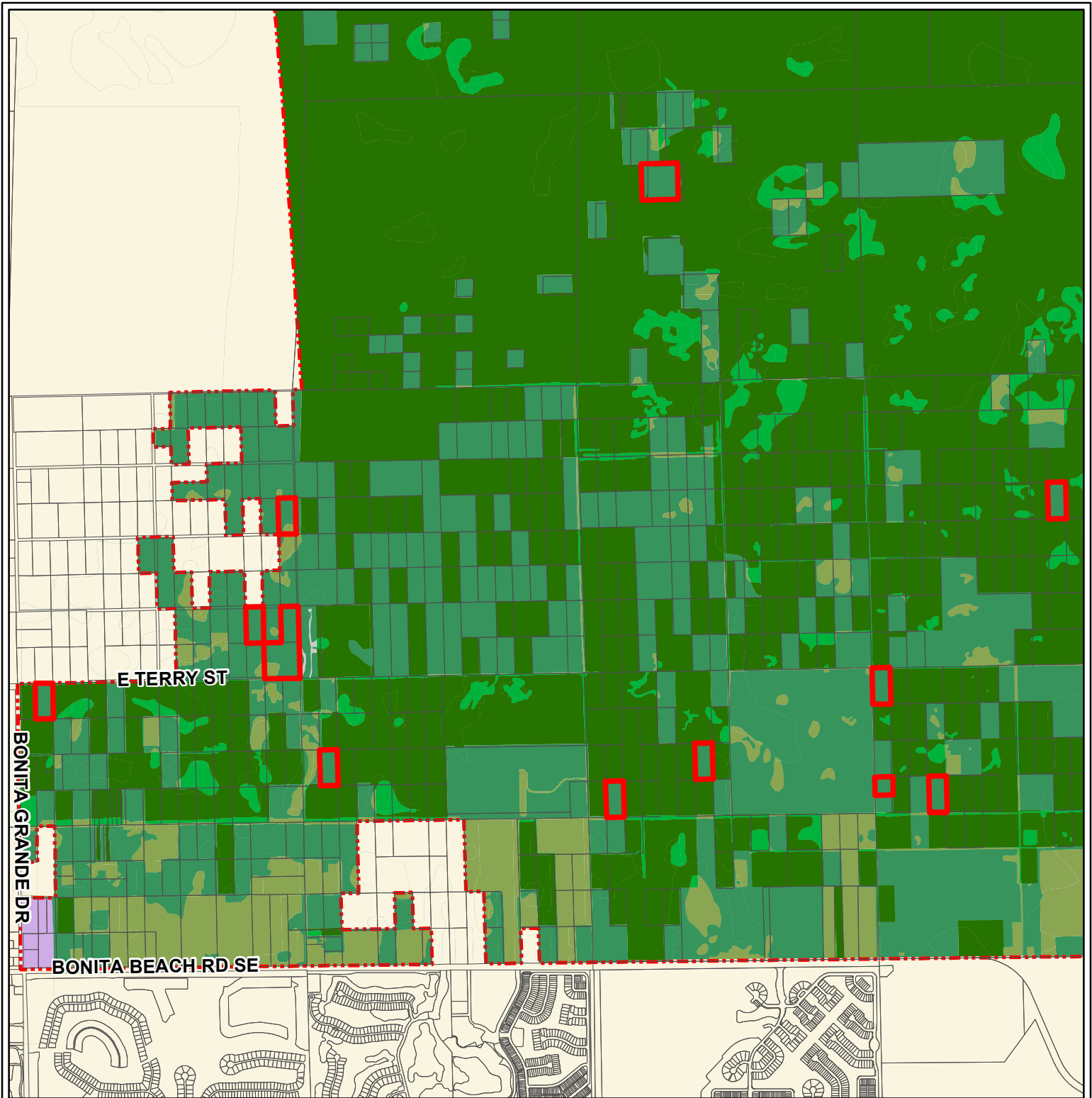
CPA2009-00008

Subject Property To Conservation Lands

**CPA2009-00008 - CONSERVATION LANDS  
EXISTING FUTURE LAND USE DESIGNATIONS**



FUTURE URBAN AREAS	INTERCHANGE AREAS	NON-URBAN AREAS
Intensive Development	Industrial Interchange	Rural
Central Urban	General Interchange	Rural Community Preserve
Urban Community	General Commercial Interchange	Coastal Rural
Suburban	Industrial/Commercial Interchange	Outer Island
Outlying Suburban	University Village Interchange	Open Lands
Sub-Outlying Suburban		Density Reduction / Groundwater Resource
Commercial		Conservation Lands Upland
Industrial Development		Wetlands
Public Facilities		Conservation Lands Wetland
University Community		
Burnt Store Marina Village		
Destination Resort Mixed Use Water Dependent		
	NEW COMMUNITY	
	New Community	
	AIRPORT AREAS	
	Tradeport	
	Airport	
	MiddleRowSpacer	
		ENVIRONMENTALLY CRITICAL AREAS (WETLANDS)
		Wetlands
		Conservation Lands Wetland
		<b>CPA2009-00008</b>
		Subject Property To Conservation Lands



**FUTURE URBAN AREAS**

- Intensive Development
- Central Urban
- Urban Community
- Suburban
- Outlying Suburban
- Sub-Outlying Suburban
- Commercial
- Industrial Development
- Public Facilities
- University Community
- Burnt Store Marina Village
- Destination Resort Mixed Use Water Dependent

**INTERCHANGE AREAS**

- Industrial Interchange
- General Interchange
- General Commercial Interchange
- Industrial/Commercial Interchange
- University Village Interchange

**NEW COMMUNITY**

- New Community

**AIRPORT AREAS**

- Tradeport
- Airport

**NON-URBAN AREAS**

- Rural
- Rural Community Preserve
- Coastal Rural
- Outer Island
- Open Lands
- Density Reduction / Groundwater Resource
- Conservation Lands Upland

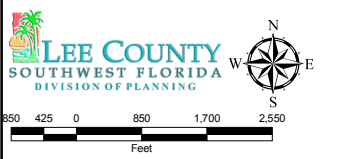
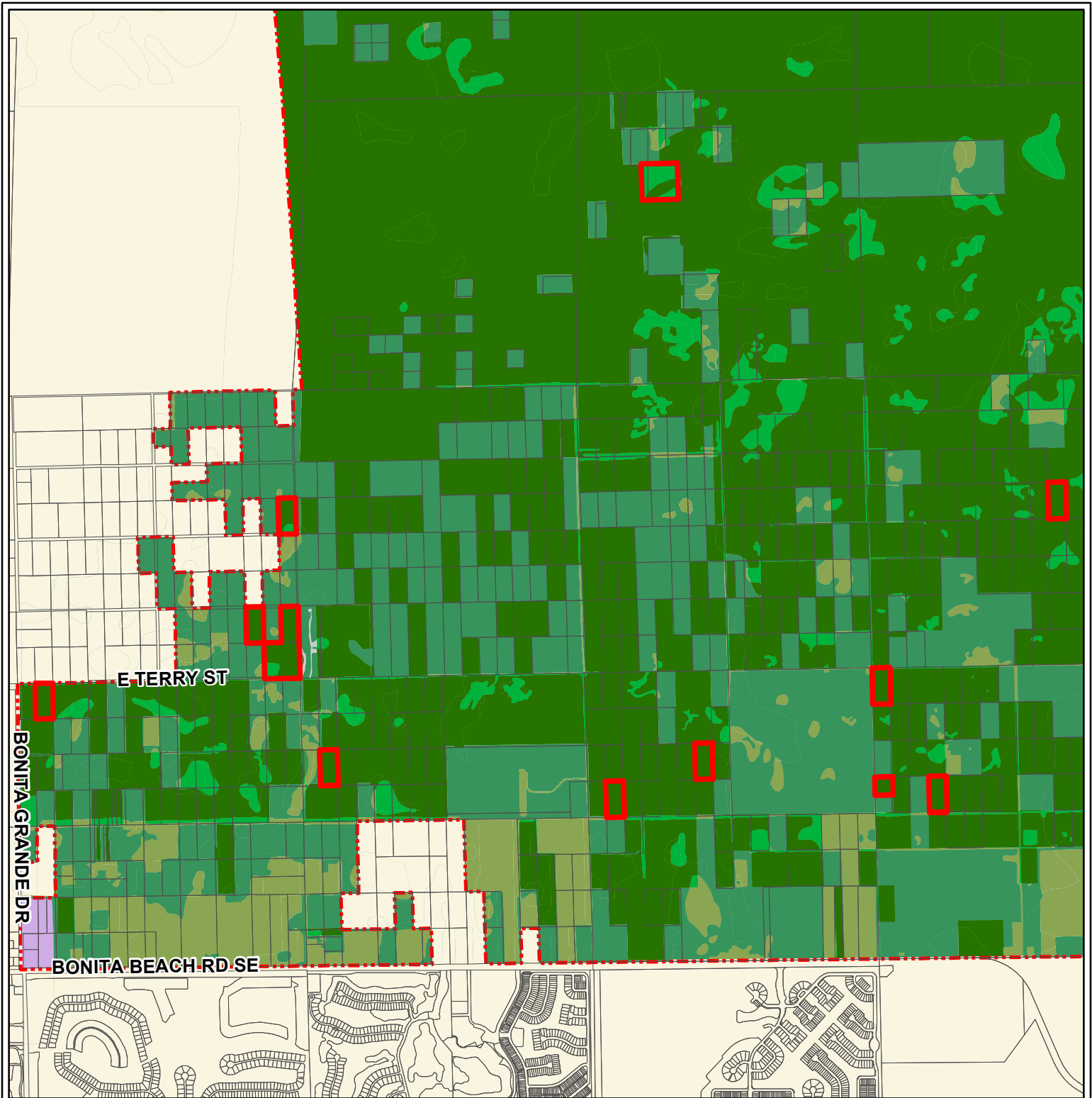
**ENVIRONMENTALLY CRITICAL AREAS (WETLANDS)**

- Wetlands
- Conservation Lands Wetland

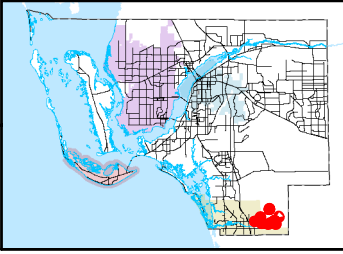
**CPA2009-00008**

Subject Property To Conservation Lands

**CPA2009-00008 - CONSERVATION LANDS  
EXISTING FUTURE LAND USE DESIGNATIONS**



Map Generated May 2010



**FUTURE URBAN AREAS**

- Intensive Development
- Central Urban
- Urban Community
- Suburban
- Outlying Suburban
- Sub-Outlying Suburban
- Commercial
- Industrial Development
- Public Facilities
- University Community
- Burnt Store Marina Village
- Destination Resort Mixed Use Water Dependent

**INTERCHANGE AREAS**

- Industrial Interchange
- General Interchange
- General Commercial Interchange
- Industrial/Commercial Interchange
- University Village Interchange

**NEW COMMUNITY**

- New Community

**AIRPORT AREAS**

- Tradeport
- Airport

**NON-URBAN AREAS**

- Rural
- Rural Community Preserve
- Coastal Rural
- Outer Island
- Open Lands
- Density Reduction / Groundwater Resource
- Conservation Lands Upland

**ENVIRONMENTALLY CRITICAL AREAS (WETLANDS)**

- Wetlands
- Conservation Lands Wetland

**CPA2009-00008**

- Subject Property To Conservation Lands

**CPA2009-00008 - CONSERVATION LANDS  
PROPOSED FUTURE LAND USE DESIGNATIONS**