

**EXHIBIT AA-3.C.1.  
LEGAL DESCRIPTION**

**Lot No. D-110, CYPRESS WOODS RV RESORT UNIT FOUR, as recorded in Plat Book 79, Pages 68-71, Public Records of Lee County, Florida.**

**Parcel Identification Number: 11-44-25-06-0000D.1100**

**Subject to: Covenants, conditions, restrictions, easements, limitations and zoning ordinances of record, if any; and Taxes for the year 2010 and subsequent.**

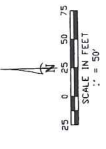
Applicant's Legal Checked  
by *bgj*

**RECEIVED**

FEB 08 2010

COMMUNITY DEVELOPMENT

ADD 2010-00013



# CYPRESS WOODS RV RESORT UNIT FOUR

A SUBDIVISION LYING IN  
 SECTION 11, TOWNSHIP 44 SOUTH, RANGE 25 EAST  
 LEE COUNTY, FLORIDA

THIS INSTRUMENT PREPARED BY  
**HARRIS SURVEYING INC.**  
 CERTIFICATE OF AUTHORIZATION No. 6981  
 C/O HARVEY BURKE JR.  
 CAPT. USMC (R) (30)  
 3331 BAYVIEW AVENUE  
 SUITE 100  
 TAMPA, FLORIDA 33604  
 (813) 722-9939

**CURVE TABLE**

NO.	RADIUS	DELTA	ARC	CHORD
118	485.31	01°34'44.74"	13.98	4.91374
119	485.31	02°08'36.72"	17.50	6.39849
120	485.31	02°42'28.70"	21.02	7.88324
121	485.31	03°16'20.68"	24.54	9.36799
122	485.31	03°50'12.66"	28.06	10.85274
123	485.31	04°24'04.64"	31.58	12.33749
124	485.31	04°57'56.62"	35.10	13.82224
125	485.31	05°31'48.60"	38.62	15.30699
126	485.31	06°05'40.58"	42.14	16.79174
127	485.31	06°39'32.56"	45.66	18.27649
128	485.31	07°13'24.54"	49.18	19.76124
129	485.31	07°47'16.52"	52.70	21.24599
130	485.31	08°21'08.50"	56.22	22.73074
131	485.31	08°55'00.48"	59.74	24.21549
132	485.31	09°28'52.46"	63.26	25.70024
133	485.31	10°02'44.44"	66.78	27.18499
134	485.31	10°36'36.42"	70.30	28.66974
135	485.31	11°10'28.40"	73.82	30.15449
136	485.31	11°44'20.38"	77.34	31.63924
137	485.31	12°18'12.36"	80.86	33.12399
138	485.31	12°52'04.34"	84.38	34.60874
139	485.31	13°25'56.32"	87.90	36.09349
140	485.31	14°00'00.00"	91.42	37.57824

NO.	RADIUS	DELTA	ARC	CHORD
141	485.31	14°33'52.28"	94.94	39.06299
142	485.31	15°07'44.26"	98.46	40.54774
143	485.31	15°41'36.24"	101.98	42.03249
144	485.31	16°15'28.22"	105.50	43.51724
145	485.31	16°49'20.20"	109.02	45.00199
146	485.31	17°23'12.18"	112.54	46.48674
147	485.31	17°57'04.16"	116.06	47.97149
148	485.31	18°30'56.14"	119.58	49.45624
149	485.31	19°04'48.12"	123.10	50.94099
150	485.31	19°38'40.10"	126.62	52.42574
151	485.31	20°12'32.08"	130.14	53.91049
152	485.31	20°46'24.06"	133.66	55.39524
153	485.31	21°20'16.04"	137.18	56.87999
154	485.31	21°54'08.02"	140.70	58.36474
155	485.31	22°28'00.00"	144.22	59.84949
156	485.31	23°01'52.00"	147.74	61.33424
157	485.31	23°35'44.00"	151.26	62.81899
158	485.31	24°09'36.00"	154.78	64.30374
159	485.31	24°43'28.00"	158.30	65.78849
160	485.31	25°17'20.00"	161.82	67.27324

NO.	RADIUS	DELTA	ARC	CHORD
161	485.31	25°51'12.00"	165.34	68.75799
162	485.31	26°25'04.00"	168.86	70.24274
163	485.31	26°58'56.00"	172.38	71.72749
164	485.31	27°32'48.00"	175.90	73.21224
165	485.31	28°06'40.00"	179.42	74.69699
166	485.31	28°40'32.00"	182.94	76.18174
167	485.31	29°14'24.00"	186.46	77.66649
168	485.31	29°48'16.00"	189.98	79.15124
169	485.31	30°22'08.00"	193.50	80.63599
170	485.31	30°56'00.00"	197.02	82.12074

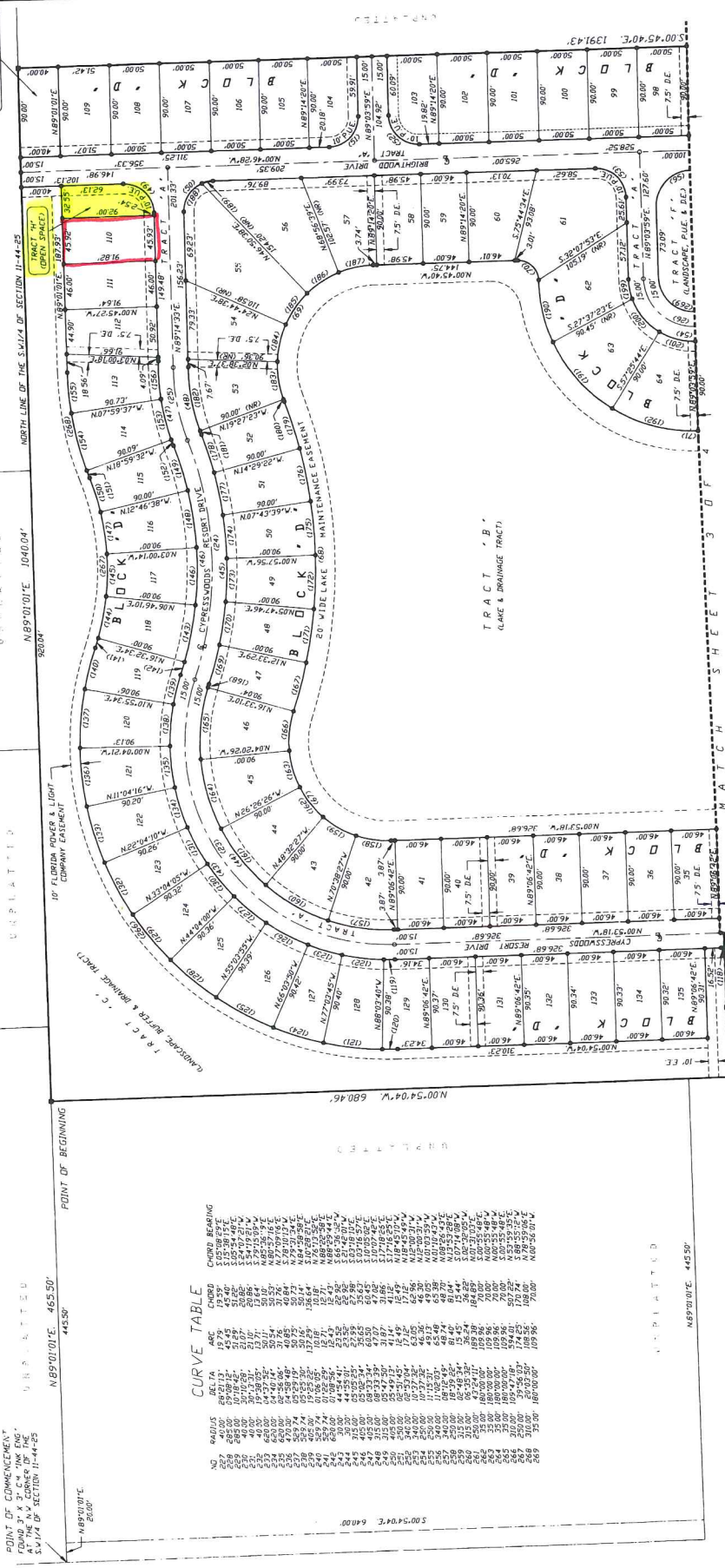
NO.	RADIUS	DELTA	ARC	CHORD
171	485.31	31°29'52.00"	200.54	83.60549
172	485.31	32°03'44.00"	204.06	85.09024
173	485.31	32°37'36.00"	207.58	86.57499
174	485.31	33°11'28.00"	211.10	88.05974
175	485.31	33°45'20.00"	214.62	89.54449
176	485.31	34°19'12.00"	218.14	91.02924
177	485.31	34°53'04.00"	221.66	92.51399
178	485.31	35°26'56.00"	225.18	94.00024
179	485.31	36°00'48.00"	228.70	95.48649
180	485.31	36°34'40.00"	232.22	96.97324

NO.	RADIUS	DELTA	ARC	CHORD
181	485.31	37°08'32.00"	235.74	98.45949
182	485.31	37°42'24.00"	239.26	99.94524
183	485.31	38°16'16.00"	242.78	101.43099
184	485.31	38°50'08.00"	246.30	102.91724
185	485.31	39°24'00.00"	249.82	104.40299
186	485.31	39°57'52.00"	253.34	105.88924
187	485.31	40°31'44.00"	256.86	107.37499
188	485.31	41°05'36.00"	260.38	108.86124
189	485.31	41°39'28.00"	263.90	110.34699
190	485.31	42°13'20.00"	267.42	111.83324

NO.	RADIUS	DELTA	ARC	CHORD
191	485.31	42°47'12.00"	270.94	113.31899
192	485.31	43°21'04.00"	274.46	114.80474
193	485.31	43°54'56.00"	277.98	116.29049
194	485.31	44°28'48.00"	281.50	117.77624
195	485.31	45°02'40.00"	285.02	119.26199
196	485.31	45°36'32.00"	288.54	120.74774
197	485.31	46°10'24.00"	292.06	122.23349
198	485.31	46°44'16.00"	295.58	123.71924
199	485.31	47°18'08.00"	299.10	125.20499
200	485.31	47°52'00.00"	302.62	126.69074

NO.	RADIUS	DELTA	ARC	CHORD
201	485.31	48°25'52.00"	306.14	128.17649
202	485.31	49°00'00.00"	309.66	129.66224
203	485.31	49°34'08.00"	313.18	131.14799
204	485.31	50°08'16.00"	316.70	132.63374
205	485.31	50°42'24.00"	320.22	134.11949
206	485.31	51°16'32.00"	323.74	135.60524
207	485.31	51°50'40.00"	327.26	137.09099
208	485.31	52°24'48.00"	330.78	138.57674
209	485.31	52°58'56.00"	334.30	140.06249
210	485.31	53°33'04.00"	337.82	141.54824

NO.	RADIUS	DELTA	ARC	CHORD
211	485.31	54°07'12.00"	341.34	143.03399
212	485.31	54°41'24.00"	344.86	144.51974
213	485.31	55°15'36.00"	348.38	146.00549
214	485.31	55°49'48.00"	351.90	147.49124
215	485.31	56°23'56.00"	355.42	148.97699
216	485.31	56°58'04.00"	358.94	150.46274
217	485.31	57°32'12.00"	362.46	151.94849
218	485.31	58°06'20.00"	365.98	153.43424
219	485.31	58°40'28.00"	369.50	154.91999
220	485.31	59°14'36.00"	373.02	156.40574



POINT OF COMMENCEMENT  
 AT THE N.W. CORNER OF THE  
 S.W. 1/4 OF SECTION 11-44-25

CURVE TABLE  
 N 89° 01' 01.0\"/>

POINT OF BEGINNING  
 N 00° 54' 04.0\"/>

UNPLATTED

UNPLATTED

UNPLATTED

UNPLATTED

UNPLATTED

UNPLATTED

UNPLATTED