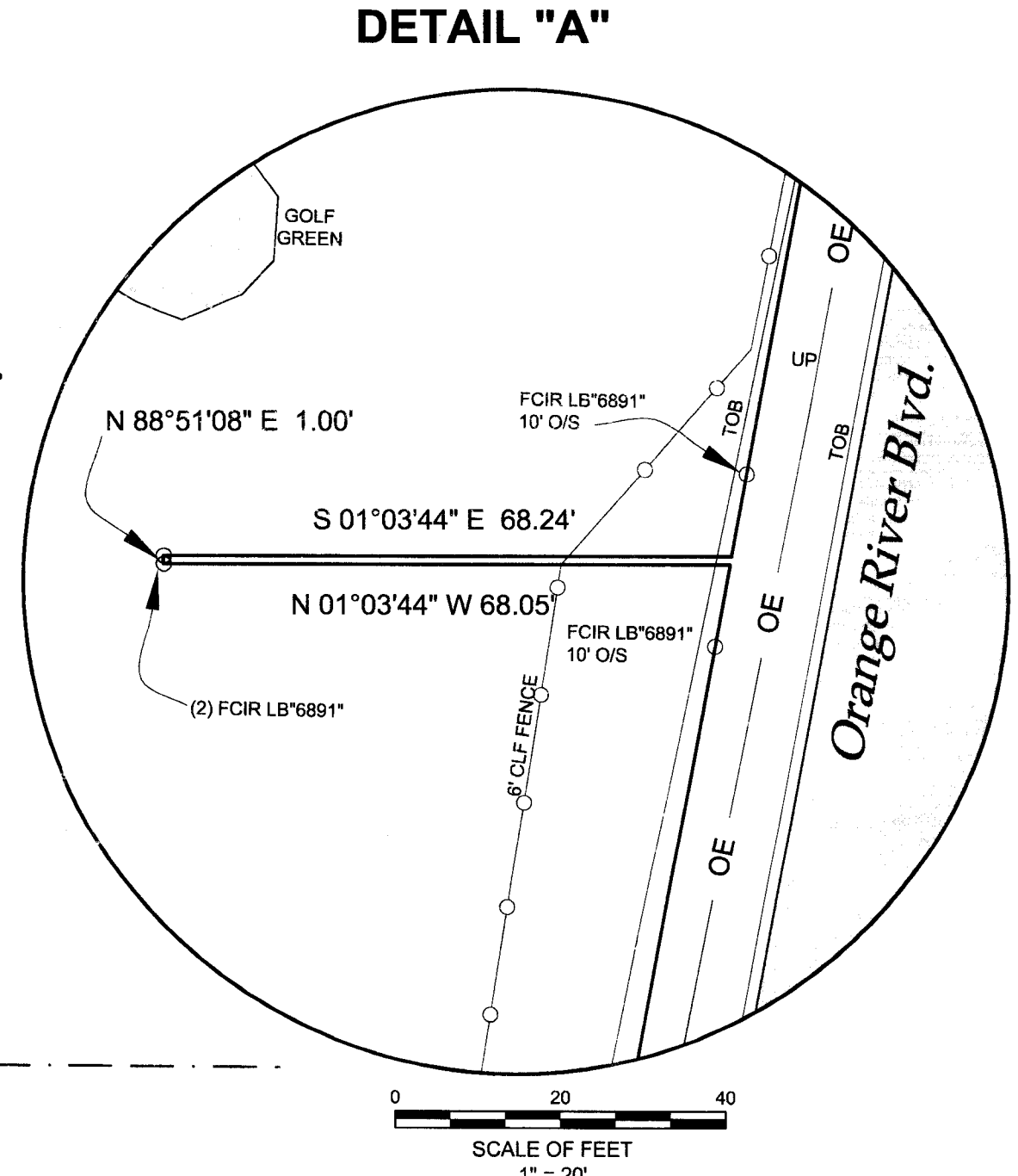












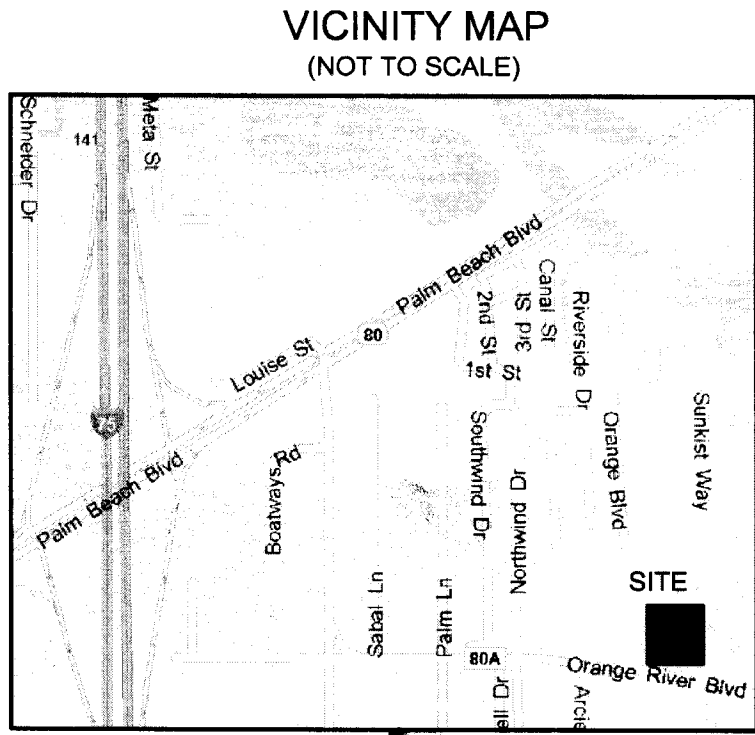


Maps for
Case #: DC12008-00015



LEGEND

● = SET IRON ROD AND CAP (S.I.R.C.)	E.R.C.P.	= ELLIPTICAL REINFORCED CONCRETE
△ = FOUND P.K. NAIL AND DISC (F.P.K.D.)	FND	= FOUND
D = FOUND CONCRETE MONUMENT (F.C.M.)	O.R.	= OFFICIAL RECORDS
Q = FOUND IRON ROD (F.I.R.)	(M. CHORD)	= FIELD MEASURED CHORD
○ = FOUND IRON PIPE (F.I.P.)	(M)	= FIELD MEASURED
⋈ = LIGHT POLE	(C)	= CALCULATED
— = SIGN	P.G.	= PAGE
 = CONTROL STRUCTURE	P.B.	= PLAT BOOK
 = UTILITY POLE (UP)	P.O.B.	= POINT OF COMMENCEMENT
 = SANITARY SEWER CLEANOUT	P.O.C.	= POINT OF BEGINNING
 = TELEPHONE RISER	R.C.P.	= REINFORCED CONCRETE PIPE
 = ELECTRICAL BOX	RNG.	= RANGE
R.W.	TOB	= TOB OF BANK
⊥ = CENTERLINE	TWP.	= TOWNSHIP
— = OVERHEAD UTILITY LINE	(TYP)	= TYPICAL
— = FENCE		= CONCRETE
— = CENTERLINE		= ASPHALT AND PAVEMENT
C.S. = CONTROL STRUCTURE		= GRASS GOLF GREEN
E.O.P.		= PARCEL EXCEPTION
↘ = GUY WIRE		= EASEMENT AREA



MDA PROJECT:
07117

CHECKED BY: WBN	DESIGNED BY: BMH
--------------------	---------------------

DATE:
3-18-08

SHEET
1 of 1

THIS SURVEY WAS PREPARED WITH THE BENEFIT OF AN OPINION OF TITLE PROVIDED BY THE HENRY LAW FIRM, P.A., DATED NOVEMBER 17, 2008, AND IS SUBJECT TO THE FOLLOWING EXEMPTIONS:

13. EASEMENT OF 30 FEET BY 80 FEET WIDE ROWS AS SHOWN ON THE PLAT OF TERRY, TICE AND VANDANWALKERS SUBDIVISION, RECORDED IN PLAT BOOK 1, PAGE 46, PUBLIC RECORDS OF LEE COUNTY, FLORIDA, (AS TO PARCELS I AND II), PLOTTED.

14. EASEMENT IN FAVOR OF FLORIDA POWER AND LIGHT COMPANY, RECORDED IN O.R. BOOK 1759, PAGE 3512, PUBLIC RECORDS OF LEE COUNTY, FLORIDA, PLOTTED.

15. EASEMENT IN FAVOR OF CITY OF TAMPA AND THE STATE OF FLORIDA IN CONNECTION WITH SUN-UN-HA MOBILE HOME VILLAGE, LTD. AND THE BOARDS OF COUNTY COMMISSIONERS OF LEE COUNTY, FLORIDA, RECORDED IN O.R. BOOK 1782, PAGE 1801, PUBLIC RECORDS OF LEE COUNTY, FLORIDA, MAY AFFECT SITE, CANNOT BE PLOTTED.

16. EASEMENT IN FAVOR OF L.S.A., RECORDED IN MISCELLANEOUS BOOK 17, PAGE 340, PUBLIC RECORDS OF LEE COUNTY, FLORIDA, (AS TO PARCEL III) MAY AFFECT SITE, CANNOT BE PLOTTED.

17. UTILITY EASEMENT IN FAVOR OF LEE COUNTY, FLORIDA, RECORDED IN O.R.

18. UTILITY EASEMENT IN FAVOR OF LEE COUNTY, FLORIDA, (AS TO PARCEL III) PLOTTED.

19. EASEMENT AGREEMENT BETWEEN THE CITY OF FORT MYERS AND SUN-UN-HA MOBILE HOME VILLAGE, LTD., RECORDED IN O.R. BOOK 2071, PAGE 637, PUBLIC RECORDS OF LEE COUNTY, FLORIDA, DOES NOT AFFECT SITE, CANNOT BE PLOTTED.

20. EASEMENT CONTAINED IN INSTRUMENT RECORDED JULY 24, 2003, UNDER O.R. BOOK 4004, PAGE 1138, PUBLIC RECORDS OF LEE COUNTY, FLORIDA. BLANKET EASEMENT, CANNOT BE PLOTTED.

THIS SURVEY WAS PREPARED WITH THE BENEFIT OF A SURVEY PREPARED BY JEN ENGINEERING INC. DATED JUNE 1983 ENTITLED "BOUNDARY SURVEY".

ORIENTATION BASED ON THE WEST LINE OF SECTION 25 AS BEARING S 02°43'39" E, AS SHOWN IN THE PARCEL III LEGAL DESCRIPTION IN O.R. 1019, PAGE 26 IN THE PUBLIC RECORDS OF LEE COUNTY, FLORIDA.

THE EXPECTED USE OF THE LAND, AS CLASSIFIED IN THE FLORIDA MINIMUM TECHNICAL STANDARDS (§101-17 F.A.C.) IS SUBURBAN. THE MINIMUM RELATIVE ACCURACY FOR THIS TYPE OF BOUNDARY SURVEY IS 1 FOOT IN 7500 FEET. THE ACCURACY OBTAINED BY MEASUREMENT AND CALCULATION OF A CLOSED GEOMETRIC FIGURE FOR THIS SURVEY WAS FOUND TO EXCEED THIS REQUIREMENT.

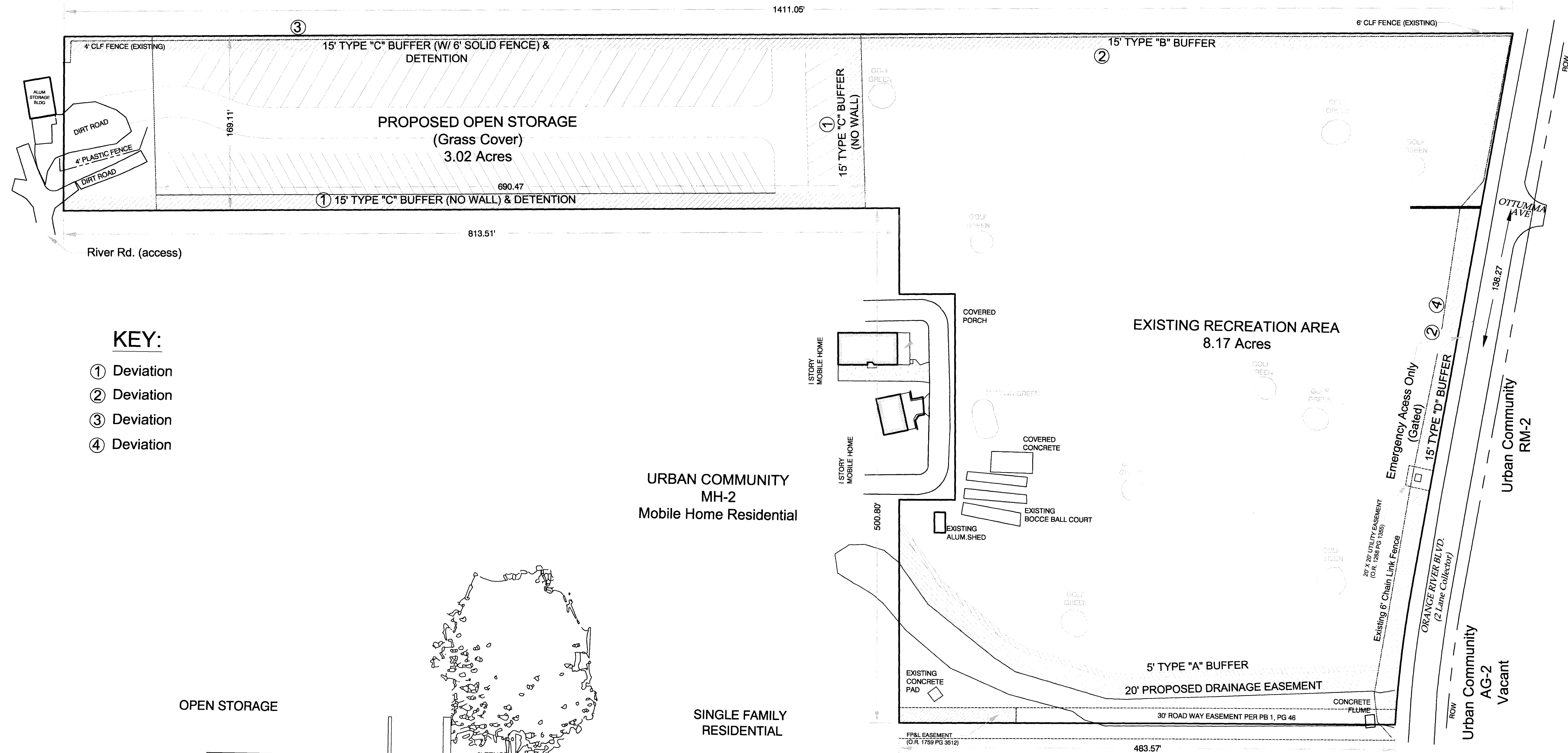
THIS SURVEY WAS NOT INTENDED TO DELINEATE OR DEFINE ANY WETLANDS, ENVIRONMENTALLY SENSITIVE AREAS, WILDLIFE HABITATS OR JURISDICTIONAL LIMITS OF ANY FEDERAL, STATE, REGIONAL OR LOCAL AGENCY, BOARD, COMMISSION OR OTHER ENTITY.

LAST DATE OF FIELD WORK PERFORMED 7-31-2008, IN FIELD BOOK 08, PAGES 1-6 AND 13.

THIS SURVEY IS NOT VALID WITHOUT THE SIGNATURE AND ORIGINAL RAISED SEAL OF A FLORIDA LICENSED SURVEYOR AND MAPPER.

PREPARED BY: *NAH* 4/24/08

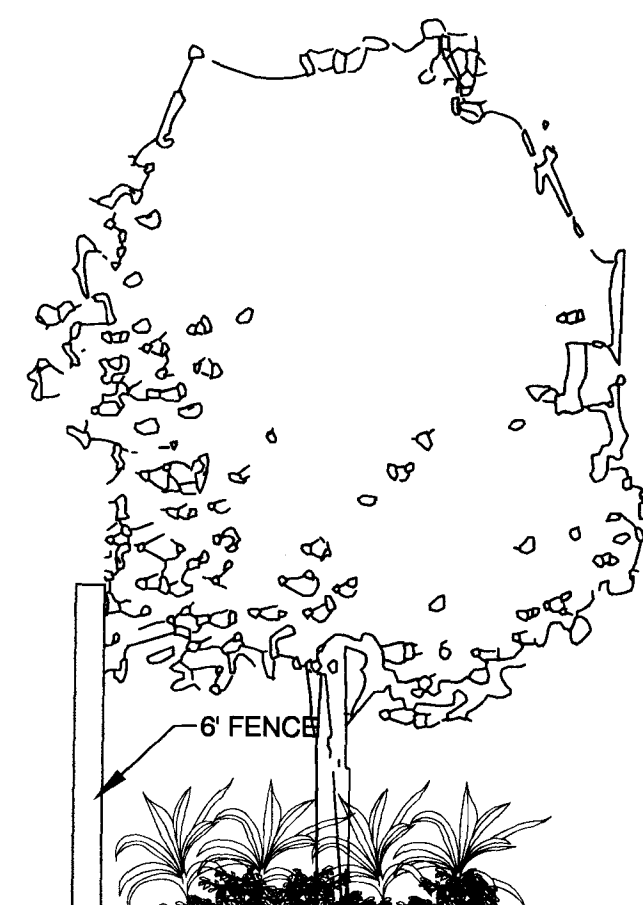
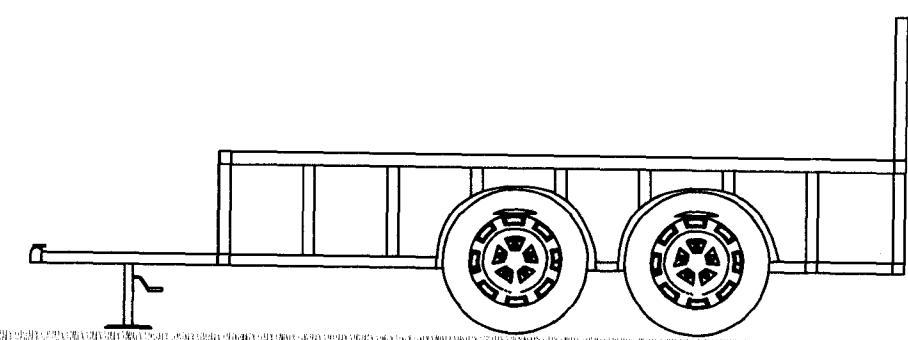
URBAN COMMUNITY
RS-1
Single Family Residential



KEY:

- ① Deviation
- ② Deviation
- ③ Deviation
- ④ Deviation

OPEN STORAGE



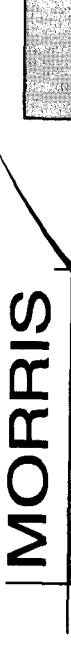
15' TYPE "C" BUFFER W/ FENCE
NOT TO SCALE

Site Area= 11.19 AC
FLU: Urban Community
Zoning: MHPD Open Storage: 3.02 AC
Recreation Area: 8.17 AC
40% Open Space Required: 4.48 AC
Open Space Provided: 4.48 AC min.

URBAN COMMUNITY
MH-2
Mobile Home Residential

APPROVED
Master Concept Plan
Site Plan # Z-09-007 Page 1 of 1
Subject to conditions in Resolution Z-09-007
Case # DCI 2008-00015



07117		8/12/08		07117	
£	AN	Sun-N-Fun Mobile Homeowners Association Lee County, Florida			
MASTER CONCEPT PLAN		SUN-N-FUN			
		<ul style="list-style-type: none">• Fort Myers• Tallahassee• Gainesville <p>2914 Cleveland Avenue Fort Myers, Florida 33901 (239) 337-3893 Fax: (239) 337-3894 Toll free: 866-337-7341</p> <p>FL CA NO. 6532 / FL CERT NO. LB8881 / LC26000330</p>			
				REVISED PER SUFFICIENCY COMMENTS	
				REVISED PER SUFFICIENCY COMMENTS	
				REVISED PER SUFFICIENCY COMMENTS	
				REVISED PER SUFFICIENCY COMMENTS	
				REVISED PER SUFFICIENCY COMMENTS	
				REVISED PER SUFFICIENCY COMMENTS	
				REVISED PER SUFFICIENCY COMMENTS	
				REVISED PER SUFFICIENCY COMMENTS	
				REVISED PER SUFFICIENCY COMMENTS	
				REVISED PER SUFFICIENCY COMMENTS	
				REVISED PER SUFFICIENCY COMMENTS	
				REVISED PER SUFFICIENCY COMMENTS	
				REVISED PER SUFFICIENCY COMMENTS	
				REVISED PER SUFFICIENCY COMMENTS	
				REVISED PER SUFFICIENCY COMMENTS	
				REVISED PER SUFFICIENCY COMMENTS	
				REVISED PER SUFFICIENCY COMMENTS	
				REVISED PER SUFFICIENCY COMMENTS	
				REVISED PER SUFFICIENCY COMMENTS	
				REVISED PER SUFFICIENCY COMMENTS	
				REVISED PER SUFFICIENCY COMMENTS	
				REVISED PER SUFFICIENCY COMMENTS	
				REVISED PER SUFFICIENCY COMMENTS	
				REVISED PER SUFFICIENCY COMMENTS	
				REVISED PER SUFFICIENCY COMMENTS	
				REVISED PER SUFFICIENCY COMMENTS	
				REVISED PER SUFFICIENCY COMMENTS	
				REVISED PER SUFFICIENCY COMMENTS	
				REVISED PER SUFFICIENCY COMMENTS	
				REVISED PER SUFFICIENCY COMMENTS	
				REVISED PER SUFFICIENCY COMMENTS	
				REVISED PER SUFFICIENCY COMMENTS	
				REVISED PER SUFFICIENCY COMMENTS	
				REVISED PER SUFFICIENCY COMMENTS	
				REVISED PER SUFFICIENCY COMMENTS	
				REVISED PER SUFFICIENCY COMMENTS	
				REVISED PER SUFFICIENCY COMMENTS	
				REVISED PER SUFFICIENCY COMMENTS	
				REVISED PER SUFFICIENCY COMMENTS	
				REVISED PER SUFFICIENCY COMMENTS	
				REVISED PER SUFFICIENCY COMMENTS	
				REVISED PER SUFFICIENCY COMMENTS	
				REVISED PER SUFFICIENCY COMMENTS	
				REVISED PER SUFFICIENCY COMMENTS	
				REVISED PER SUFFICIENCY COMMENTS	
				REVISED PER SUFFICIENCY COMMENTS	
				REVISED PER SUFFICIENCY COMMENTS	
				REVISED PER SUFFICIENCY COMMENTS	
				REVISED PER SUFFICIENCY COMMENTS	
				REVISED PER SUFFICIENCY COMMENTS	
				REVISED PER SUFFICIENCY COMMENTS	
				REVISED PER SUFFICIENCY COMMENTS	
				REVISED PER SUFFICIENCY COMMENTS	
				REVISED PER SUFFICIENCY COMMENTS	
				REVISED PER SUFFICIENCY COMMENTS	
				REVISED PER SUFFICIENCY COMMENTS	
				REVISED PER SUFFICIENCY COMMENTS	
				REVISED PER SUFFICIENCY COMMENTS	
				REVISED PER SUFFICIENCY COMMENTS	
				REVISED PER SUFFICIENCY COMMENTS	
				REVISED PER SUFFICIENCY COMMENTS	
				REVISED PER SUFFICIENCY COMMENTS	
				REVISED PER SUFFICIENCY COMMENTS	
				REVISED PER SUFFICIENCY COMMENTS	
				REVISED PER SUFFICIENCY COMMENTS	
				REVISED PER SUFFICIENCY COMMENTS	
				REVISED PER SUFFICIENCY COMMENTS	
				REVISED PER SUFFICIENCY COMMENTS	
				REVISED PER SUFFICIENCY COMMENTS	
				REVISED PER SUFFICIENCY COMMENTS	
				REVISED PER SUFFICIENCY COMMENTS	
				REVISED PER SUFFICIENCY COMMENTS	
				REVISED PER SUFFICIENCY COMMENTS	
				REVISED PER SUFFICIENCY COMMENTS	
				REVISED PER SUFFICIENCY COMMENTS	
				REVISED PER SUFFICIENCY COMMENTS	
				REVISED PER SUFFICIENCY COMMENTS	
				REVISED PER SUFFICIENCY COMMENTS	
				REVISED PER SUFFICIENCY COMMENTS	
				REVISED PER SUFFICIENCY COMMENTS	
				REVISED PER SUFFICIENCY COMMENTS	
				REVISED PER SUFFICIENCY COMMENTS	
				REVISED PER SUFFICIENCY COMMENTS	
				REVISED PER SUFFICIENCY COMMENTS	
				REVISED PER SUFFICIENCY COMMENTS	
				REVISED PER SUFFICIENCY COMMENTS	
				REVISED PER SUFFICIENCY COMMENTS	
				REVISED PER SUFFICIENCY COMMENTS	
				REVISED PER SUFFICIENCY COMMENTS	
				REVISED PER SUFFICIENCY COMMENTS	
				REVISED PER SUFFICIENCY COMMENTS	
				REVISED PER SUFFICIENCY COMMENTS	
				REVISED PER SUFFICIENCY COMMENTS	
				REVISED PER SUFFICIENCY COMMENTS	
				REVISED PER SUFFICIENCY COMMENTS	
				REVISED PER SUFFICIENCY COMMENTS	
				REVISED PER SUFFICIENCY COMMENTS	
				REVISED PER SUFFICIENCY COMMENTS	
				REVISED PER SUFFICIENCY COMMENTS	
				REVISED PER SUFFICIENCY COMMENTS	
				REVISED PER SUFFICIENCY COMMENTS	
				REVISED PER SUFFICIENCY COMMENTS	
				REVISED PER SUFFICIENCY COMMENTS	
				REVISED PER SUFFICIENCY COMMENTS	
				REVISED PER SUFFICIENCY COMMENTS	
				REVISED PER SUFFICIENCY COMMENTS	
				REVISED PER SUFFICIENCY COMMENTS	
				REVISED PER SUFFICIENCY COMMENTS	
				REVISED PER SUFFICIENCY COMMENTS	
				REVISED PER SUFFICIENCY COMMENTS	
				REVISED PER SUFFICIENCY COMMENTS	
				REVISED PER SUFFICIENCY COMMENTS	
				REVISED PER SUFFICIENCY COMMENTS	

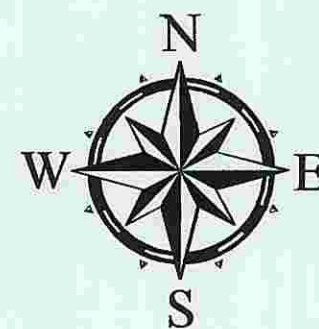
Sun-N-Fun Mobile
Home Park
DCI2008-00015

Legend

 Subject Property

This map drawn for visual purposes only.
Not to be used for official zoning map.

Legal description review found
insufficient at time of printing.



0 200 400
Feet

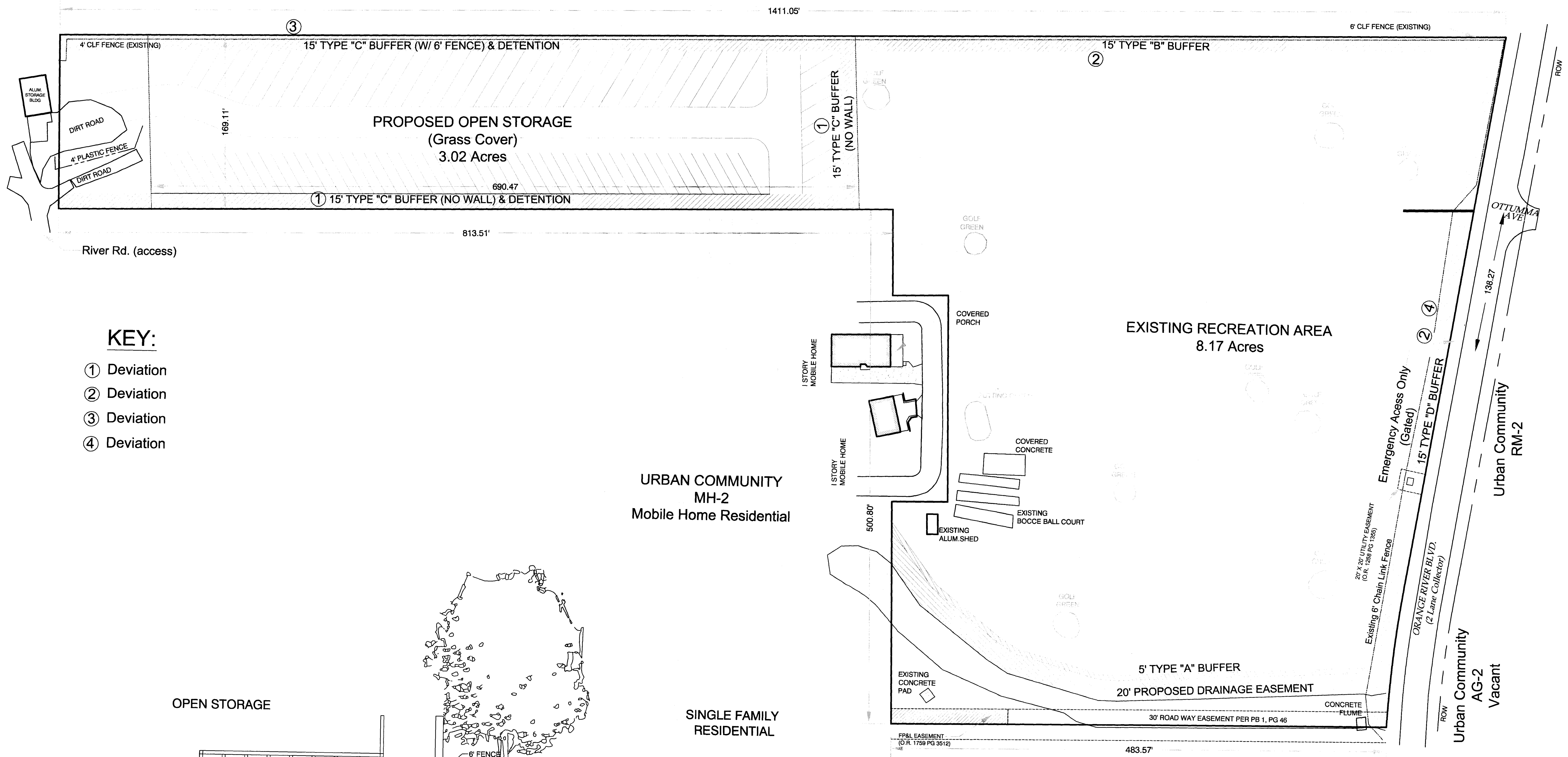


Prepared by:
Lee County DCD
Mapped April 15, 2008

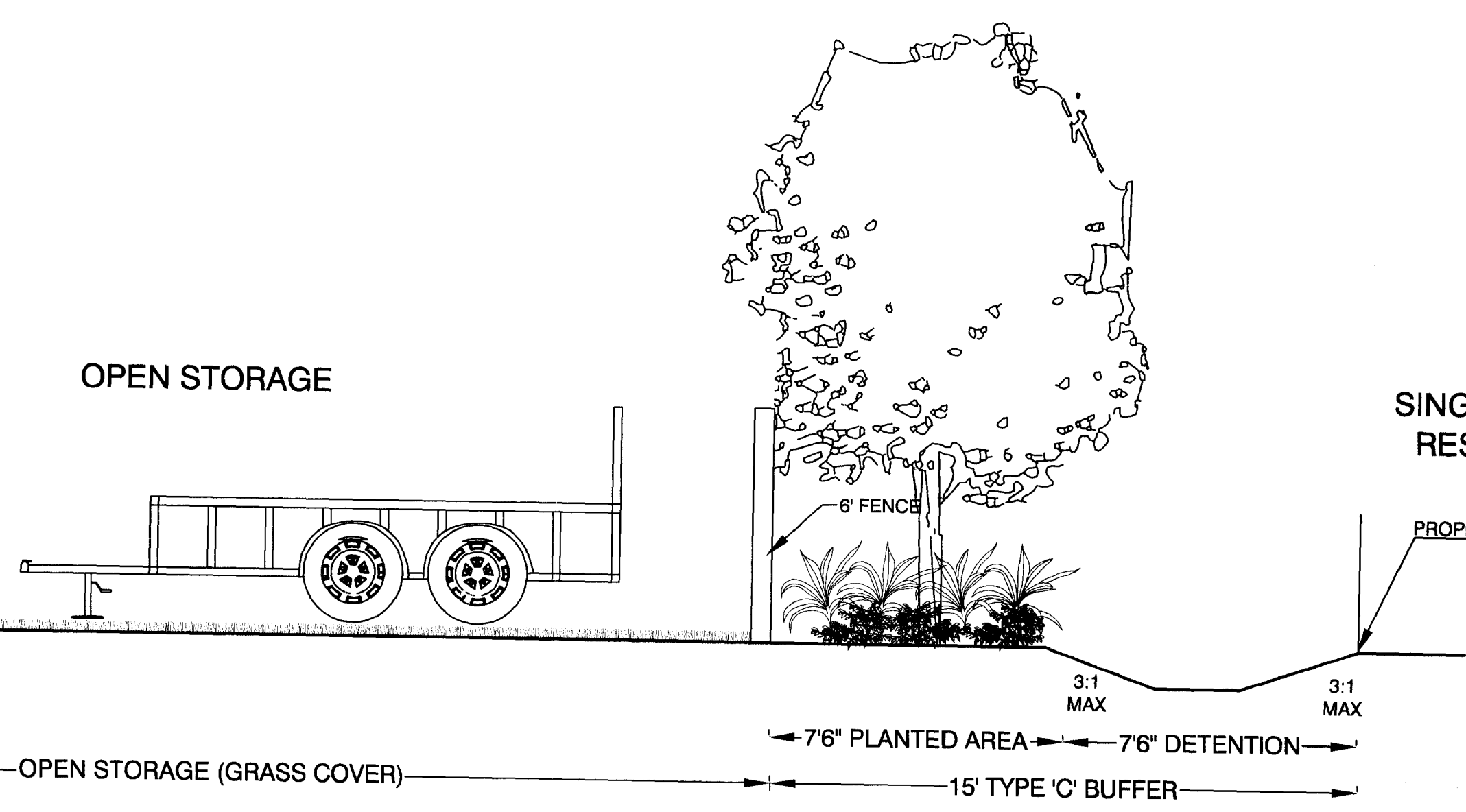
2007 Aerial Photograph



URBAN COMMUNITY
RS-1
Single Family Residential



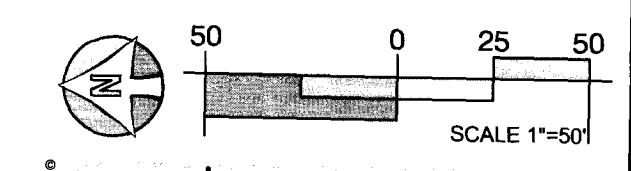
- KEY:**
- ① Deviation
 - ② Deviation
 - ③ Deviation
 - ④ Deviation



15' TYPE "C" BUFFER W/ FENCE
NOT TO SCALE

Site Area= 11.19 AC
FLU: Urban Community
Zoning: MHPD Open Storage: 3.02 AC
Recreation Area: 8.17 AC
Open Space Required: 4.48 AC
Open Space Provided: 4.48 AC min.

nci 2008-00015



MASTER CONCEPT PLAN															
SUN-N-FUN Sun-N-Fun Mobile Homeowners Association Lee County, Florida															
07117															
JJ	AN														
8/12/08															
07117															
MORRIS DEPEW ENGINEERS • PLANNERS • SURVEYORS LANDSCAPE ARCHITECTS FL CA NO. 6532 / FL CERT NO. LB6891 / LC2600330 • Fort Myers • Tallahassee • Gainesville 2914 Cleveland Avenue Fort Myers, Florida 33901 Tel: (239) 337-3964 Fax: (239) 337-3964 Toll free: 866-337-7341															
<table border="1"><tr><td>8/13/08</td><td>REVISED PER SUFFICIENCY COMMENTS</td></tr><tr><td>12/2/08</td><td>REVISED PER SUFFICIENCY COMMENTS</td></tr><tr><td>12/2/08</td><td>REVISED PER SUFFICIENCY COMMENTS</td></tr><tr><td>01/20/09</td><td>REVISED</td></tr><tr><td>03/02/09</td><td>REVISED</td></tr><tr><td>03/05/09</td><td>REVISED</td></tr><tr><td>05/05/09</td><td>REVISED PER COUNTY COMMENTS</td></tr></table>		8/13/08	REVISED PER SUFFICIENCY COMMENTS	12/2/08	REVISED PER SUFFICIENCY COMMENTS	12/2/08	REVISED PER SUFFICIENCY COMMENTS	01/20/09	REVISED	03/02/09	REVISED	03/05/09	REVISED	05/05/09	REVISED PER COUNTY COMMENTS
8/13/08	REVISED PER SUFFICIENCY COMMENTS														
12/2/08	REVISED PER SUFFICIENCY COMMENTS														
12/2/08	REVISED PER SUFFICIENCY COMMENTS														
01/20/09	REVISED														
03/02/09	REVISED														
03/05/09	REVISED														
05/05/09	REVISED PER COUNTY COMMENTS														