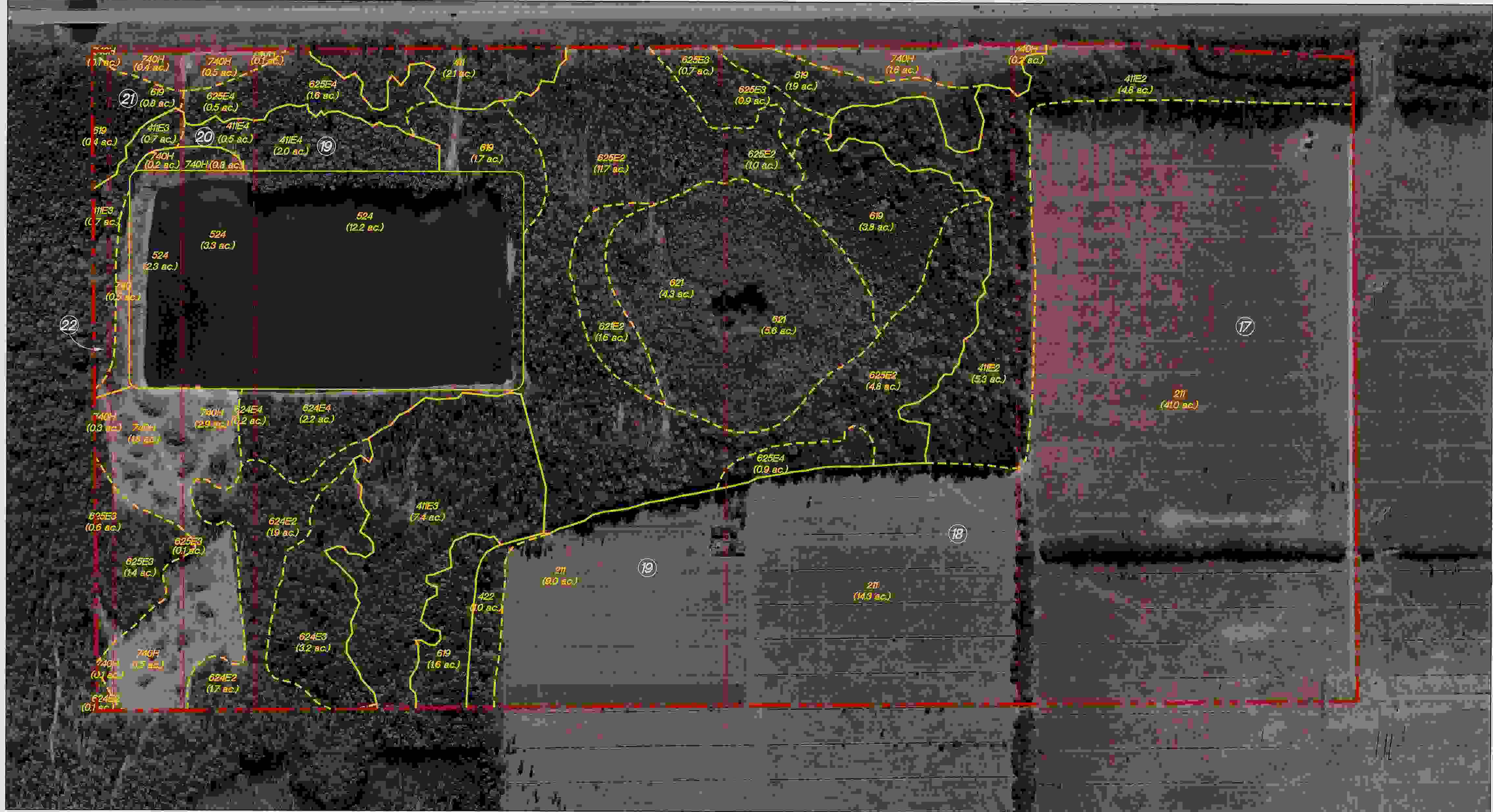
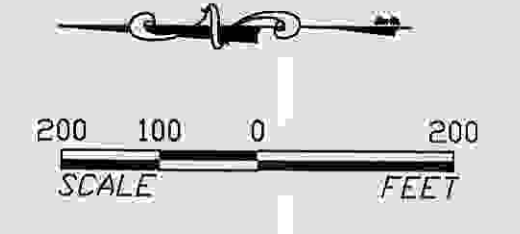




CPA2005-00005

PLAN/BACKUP

COMP PLAN



LEE COUNTY VEGETATION MAP

NWCS WETLAND JURISDICTIONAL DETERMINATION
TBI ECKERT 8/14/98

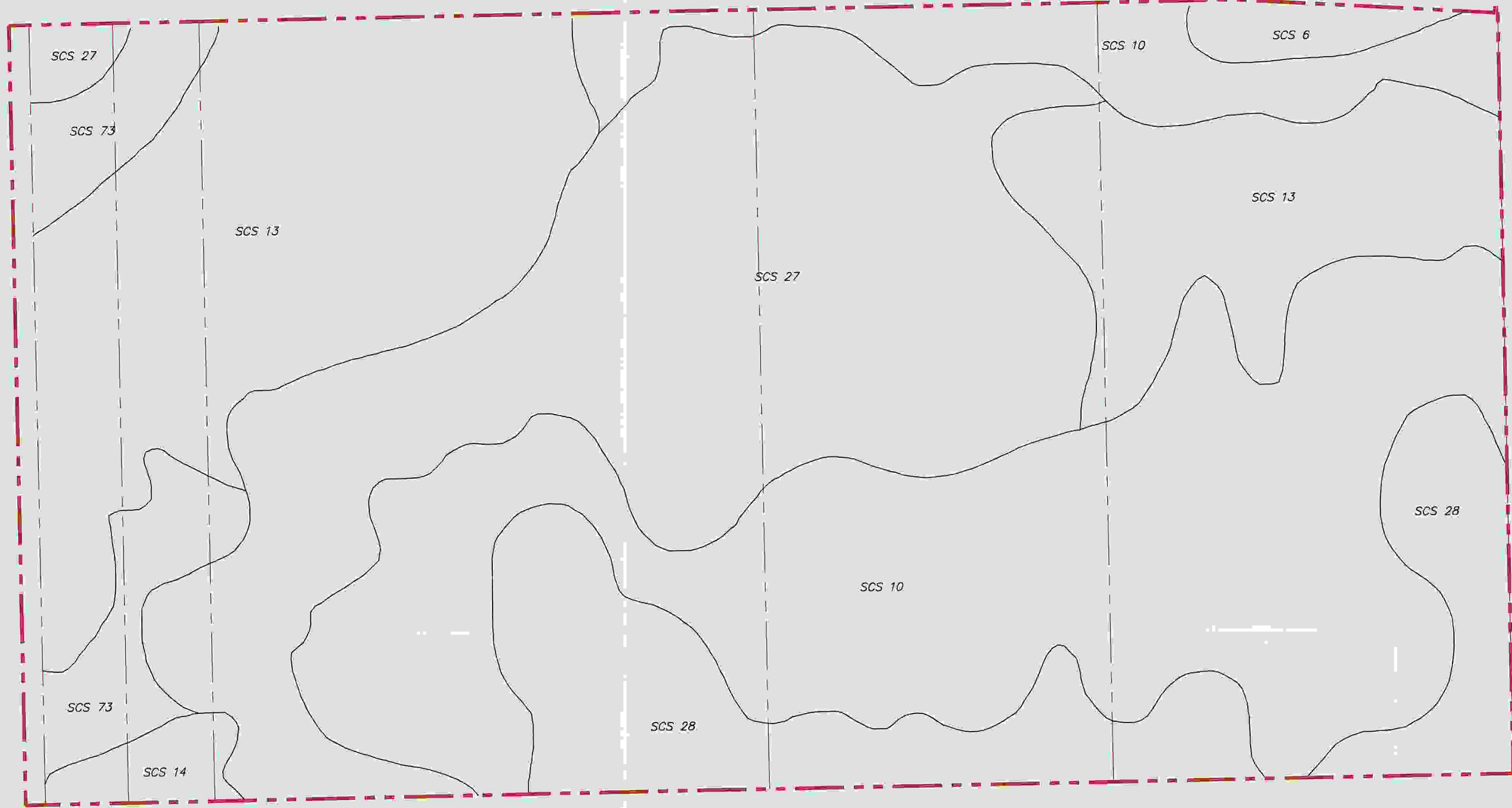
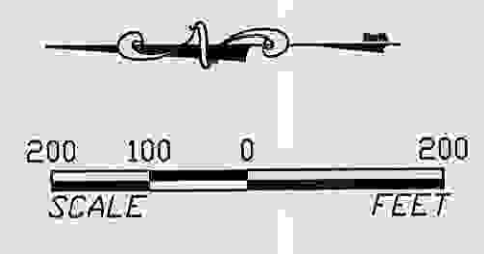
SPRIND WETLAND JURISDICTION DETERMINATION
CRAD SCHMITTLER 7/22/98

USACE WETLAND JURISDICTION DETERMINATION
STEVE BULLIVAN 6/15/98

NOTE:
PARCEL BOUNDARIES ARE APPROXIMATE AS PROVIDED
BY SOURCE ENGINEERING, INC.

- ① Property ID
- Property Line
- - - Interior Property Line
- - - FLUCCS Line
- - - Jurisdictional Wetland Line

FLUCCS	Description	Acres
211	Improved Pastures	64.3 ac.
411	Pine Flatwoods	2.1 ac.
41E2	Pine Flatwoods Invaded by Exotics (26-50X)	1.1 ac.
41E3	Pine Flatwoods Invaded by Exotics (51-75X)	8.8 ac.
41E4	Pine Flatwoods Invaded by Exotics (76-90X)	2.5 ac.
422	Brazilian Pepper	1.0 ac.
524	Lakes less than 10 acres which are dominant features	17.8 ac.
619	Exotic Wetland Hardwoods (Melaleuca and Brazilian Pepper)	10.2 ac.
621	Cypress	9.9 ac.
62E2	Cypress Invaded by Exotics (26-50X)	1.6 ac.
624E2	Cypress - Pine Invaded by Exotics (26-50X)	3.7 ac.
624E3	Cypress - Pine Invaded by Exotics (51-75X)	3.2 ac.
624E4	Cypress - Pine Invaded by Exotics (76-90X)	2.4 ac.
625E2	Hydric Pine Flatwoods Invaded by Exotics (26-50X)	17.3 ac.
625E3	Hydric Pine Flatwoods Invaded by Exotics (51-75X)	3.7 ac.
625E4	Hydric Pine Flatwoods Invaded by Exotics (76-90X)	3.0 ac.
740	Disturbed Land	0.5 ac.
740H	Hydric Disturbed Land	10.0 ac.
TOTAL		172.3 ac.



LEE COUNTY SOIL MAP

10

- Soil Legend**
- SCS 06 - Hollandale fine sand
 - SCS 10 - Pompano fine sand
 - SCS 13 - Boca fine sand
 - SCS 14 - Valkaria fine sand
 - SCS 27 - Pompano fine sand, depressional
 - SCS 28 - Immokalee sand
 - SCS 73 - Pineda fine sand, depressional

July 28, 2006 10:26:31 am
Drawing: PRESS:LANE.DWG (50)

W. DEXTER BENDER & ASSOCIATES
ENVIRONMENTAL & MARINE CONSULTING
FORT MYERS 239/334-3880
FORT CHARLOTTE 941/255-1482

ALICO / I-75 PARCEL

SHEET